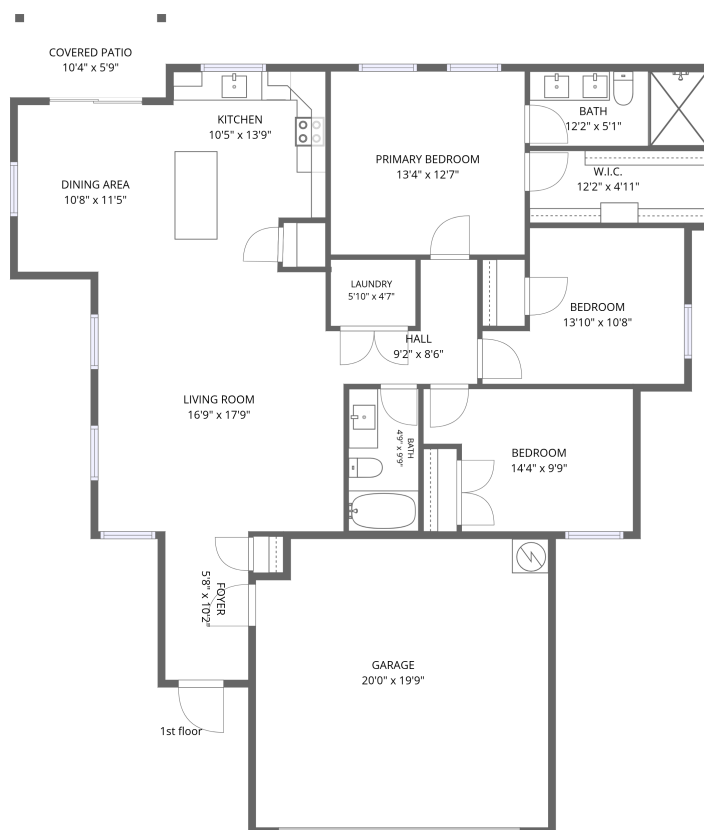


Home data report

5622 Van Horn Drive, Canyon Creek, Granbury, Hood County, Texas, United States, 76048



Total Area: 1362 sq. ft

1st Floor: 1362 sq. ft

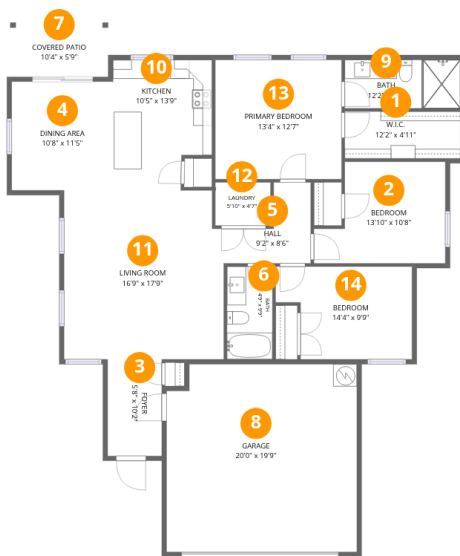
Excluded: Garage 389 sq. ft, Covered patio 59 sq. ft, Walls: 116 sq. ft

Property summary



Home data report

5622 Van Horn Drive, Canyon Creek, Granbury, Hood County, Texas, United States, 76048



Room dimensions

Floor 1

Total:1362sqft Excluded: 448sqft

#		Dimensions	sqft	Counted as living area
1	W.I.C.	12'2" x 4'11"	60 sq. ft	Yes
2	Bedroom	13'10" x 10'8"	125 sq. ft	Yes
3	Foyer	5'8" x 10'2"	58 sq. ft	Yes
4	Dining Area	10'8" x 11'5"	122 sq. ft	Yes
5	Hall	9'2" x 8'6"	52 sq. ft	Yes
6	Bath	4'9" x 9'9"	47 sq. ft	Yes
7	Covered Patio	10'4" x 5'9"	59 sq. ft	No
8	Garage	20'0" x 19'9"	389 sq. ft	No
9	Bath	12'2" x 5'1"	62 sq. ft	Yes
10	Kitchen	10'5" x 13'9"	131 sq. ft	Yes
11	Living Room	16'9" x 17'9"	294 sq. ft	Yes

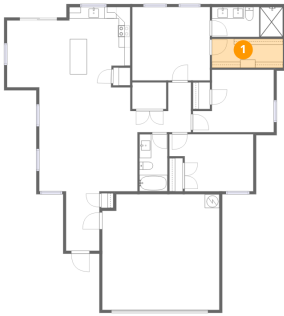
Home data report

**5622 Van Horn Drive, Canyon Creek, Granbury, Hood County,
Texas, United States, 76048**

#		Dimensions	sqft	Counted as living area
12	Laundry	5'10" x 4'7"	26 sq. ft	Yes
13	Primary Bedroom	13'4" x 12'7"	167 sq. ft	Yes
14	Bedroom	14'4" x 9'9"	125 sq. ft	Yes

5622 Van Horn Drive, Canyon Creek, Granbury, Hood County, Texas, United States, 76048

1 Floor 1 - W.I.C.



Dimensions: 12'2" x 4'11"
Area: 60 sq. ft
Counted as living area: Yes

Heated: Yes
Finished: Yes
Enclosed: Yes
Contiguous: Yes
Permitted: Yes
Wet space: No
Addition: No
Conversion: No

2 Floor 1 - Bedroom



Dimensions: 13'10" x 10'8"
Area: 125 sq. ft
Counted as living area: Yes

Heated: Yes
Finished: Yes
Enclosed: Yes
Contiguous: Yes
Permitted: Yes
Wet space: No
Addition: No
Conversion: No

5622 Van Horn Drive, Canyon Creek, Granbury, Hood County, Texas, United States, 76048

3 Floor 1 - Foyer



Dimensions: 5'8" x 10'2"
Area: 58 sq. ft
Counted as living area: Yes

Heated: Yes
Finished: Yes
Enclosed: Yes
Contiguous: Yes
Permitted: Yes
Wet space: No
Addition: No
Conversion: No

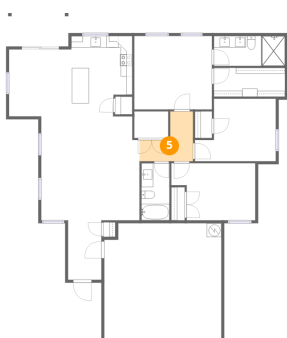
4 Floor 1 - Dining Area



Dimensions: 10'8" x 11'5"
Area: 122 sq. ft
Counted as living area: Yes

Heated: Yes
Finished: Yes
Enclosed: Yes
Contiguous: Yes
Permitted: Yes
Wet space: No
Addition: No
Conversion: No

5 Floor 1 - Hall



Dimensions: 9'2" x 8'6"
Area: 52 sq. ft
Counted as living area: Yes

Heated: Yes
Finished: Yes
Enclosed: Yes
Contiguous: Yes
Permitted: Yes
Wet space: No
Addition: No
Conversion: No

5622 Van Horn Drive, Canyon Creek, Granbury, Hood County, Texas, United States, 76048

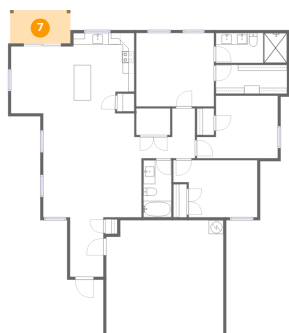
6 Floor 1 - Bath



Dimensions: 4'9" x 9'9"
Area: 47 sq. ft
Counted as living area: Yes

Heated: Yes
Finished: Yes
Enclosed: Yes
Contiguous: Yes
Permitted: Yes
Wet space: Yes
Addition: No
Conversion: No

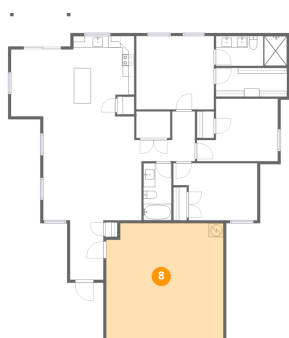
7 Floor 1 - Covered Patio



Dimensions: 10'4" x 5'9"
Area: 59 sq. ft
Counted as living area: No

Heated: No
Finished: No
Enclosed: No
Contiguous: Yes
Permitted: Yes
Wet space: No
Addition: No
Conversion: No

8 Floor 1 - Garage

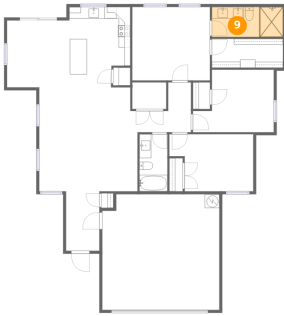


Dimensions: 20'0" x 19'9"
Area: 389 sq. ft
Counted as living area: No

Heated: No
Finished: No
Enclosed: Yes
Contiguous: Yes
Permitted: Yes
Wet space: No
Addition: No
Conversion: No

5622 Van Horn Drive, Canyon Creek, Granbury, Hood County, Texas, United States, 76048

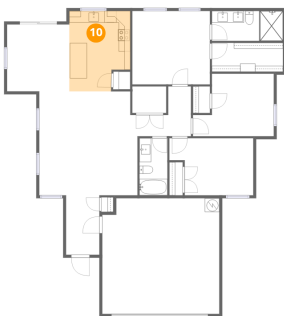
9 Floor 1 - Bath



Dimensions: 12'2" x 5'1"
Area: 62 sq. ft
Counted as living area: Yes

Heated: Yes
Finished: Yes
Enclosed: Yes
Contiguous: Yes
Permitted: Yes
Wet space: Yes
Addition: No
Conversion: No

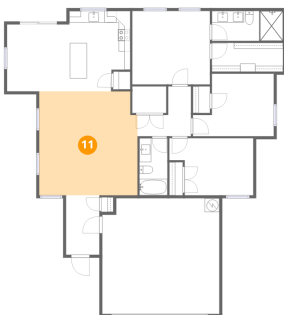
10 Floor 1 - Kitchen



Dimensions: 10'5" x 13'9"
Area: 131 sq. ft
Counted as living area: Yes

Heated: Yes
Finished: Yes
Enclosed: Yes
Contiguous: Yes
Permitted: Yes
Wet space: No
Addition: No
Conversion: No

11 Floor 1 - Living Room

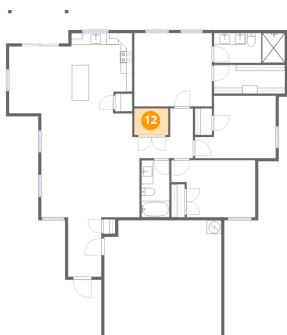


Dimensions: 16'9" x 17'9"
Area: 294 sq. ft
Counted as living area: Yes

Heated: Yes
Finished: Yes
Enclosed: Yes
Contiguous: Yes
Permitted: Yes
Wet space: No
Addition: No
Conversion: No

5622 Van Horn Drive, Canyon Creek, Granbury, Hood County, Texas, United States, 76048

12 Floor 1 - Laundry



Dimensions: 5'10" x 4'7"
Area: 26 sq. ft
Counted as living area: Yes

Heated: Yes
Finished: Yes
Enclosed: Yes
Contiguous: Yes
Permitted: Yes
Wet space: No
Addition: No
Conversion: No

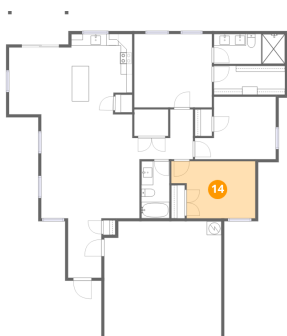
13 Floor 1 - Primary Bedroom



Dimensions: 13'4" x 12'7"
Area: 167 sq. ft
Counted as living area: Yes

Heated: Yes
Finished: Yes
Enclosed: Yes
Contiguous: Yes
Permitted: Yes
Wet space: No
Addition: No
Conversion: No

14 Floor 1 - Bedroom



Dimensions: 14'4" x 9'9"
Area: 125 sq. ft
Counted as living area: Yes

Heated: Yes
Finished: Yes
Enclosed: Yes
Contiguous: Yes
Permitted: Yes
Wet space: No
Addition: No
Conversion: No