

2904 Clemson Avenue, NoDa, Charlotte, Mecklenburg County, North Carolina, United States, 28205

Gross Living Area: 3681 sq. ft

Level 1



Space	Area (sq. ft)	Calculation
1st floor (Living area)	1616	Coordinate Polygon Area Algorithm using inches $-((608.3 + 608.3) * (-15.1 - 339.4) + (608.3 + 372) * (339.4 - 339.4) + (372 + 372) * (339.4 - 530.2) + (372 + 366) * (530.2 - 530.2) + (366 + 366) * (530.2 - 536.2) + (366 + 287) * (536.2 - 536.2) + (287 + 287) * (536.2 - 614.1) + (287 + 124.7) * (614.1 - 614.1) + (124.7 + 124.7) * (614.1 - -15.1) + (124.7 + 608.3) * (-15.1 - -15.1)) * 0.5 * 0.00694$
GARAGE (Non-living area)	405	$-((608.3 + 608.3) * (339.4 - 585) + (608.3 + 366) * (585 - 585) + (366 + 366) * (585 - 530.2) + (366 + 372) * (530.2 - 530.2) + (372 + 372) * (530.2 - 339.4) + (372 + 608.3) * (339.4 - 339.4)) * 0.5 * 0.00694$

2904 Clemson Avenue, NoDa, Charlotte, Mecklenburg County, North Carolina, United States, 28205

Gross Living Area: 3681 sq. ft

Level 1

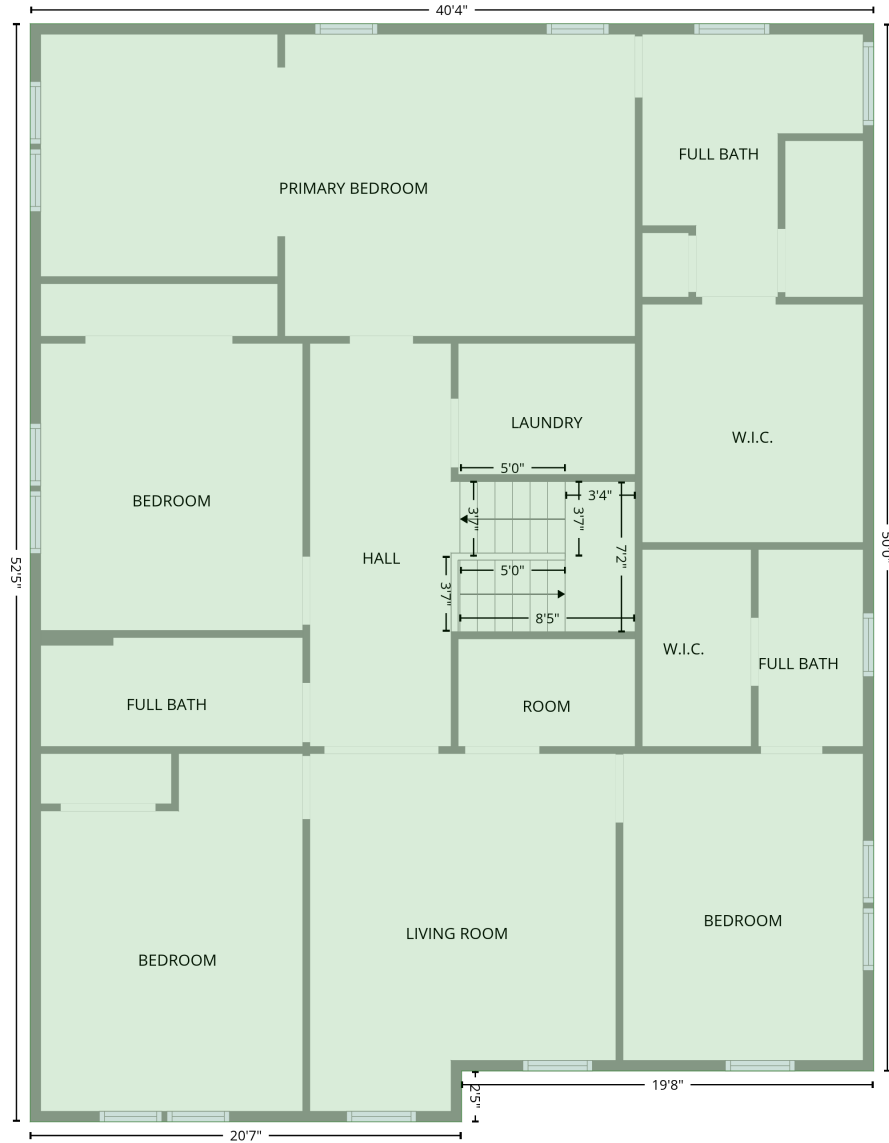
Space	Area (sq. ft)	Calculation <small>Coordinate Polygon Area Algorithm using inches</small>
SCREENED PORCH (Non-living area)	177	$-\left((372 + 372) * (-118.2 - -15.1) + (372 + 124.7) * (-15.1 - -15.1) + (124.7 + 124.7) * (-15.1 - -118.2) + (124.7 + 372) * (-118.2 - -118.2)\right) * 0.5 * 0.00694$
PORCH (Non-living area)	129	$-\left((366 + 366) * (536.2 - 665.3) + (366 + 124.6) * (665.3 - 665.3) + (124.6 + 124.7) * (665.3 - 614.1) + (124.7 + 287) * (614.1 - 614.1) + (287 + 287) * (614.1 - 536.2) + (287 + 366) * (536.2 - 536.2)\right) * 0.5 * 0.00694$

2904 Clemson Avenue, NoDa, Charlotte, Mecklenburg County, North Carolina, United States, 28205

Gross Living Area: 3681 sq. ft

Level 2

2nd floor
[AREA: 2065]



Space	Area (sq. ft)	Calculation <small>Coordinate Polygon Area Algorithm using inches</small>
2nd floor (Living area)	2065	$-\left(\left(608.3 + 608.3\right) * \left(-15.1 - 585\right) + \left(608.3 + 372\right) * \left(585 - 585\right) + \left(372 + 372\right) * \left(585 - 614.1\right) + \left(372 + 124.7\right) * \left(614.1 - 614.1\right) + \left(124.7 + 124.7\right) * \left(614.1 - -15.1\right) + \left(124.7 + 608.3\right) * \left(-15.1 - -15.1\right)\right) * 0.5 * 0.00694$