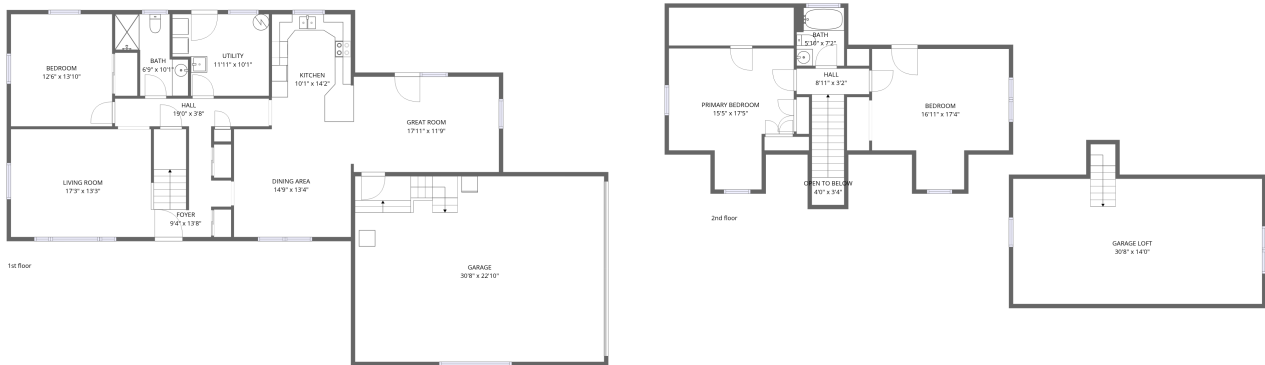


Home data report

22292 Louise St, Georgetown, DE, US

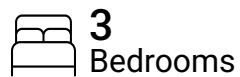


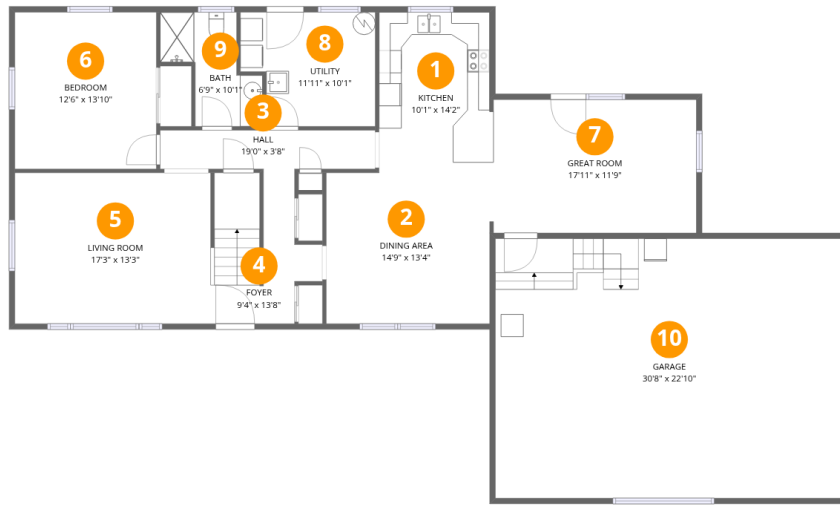
Total Area: 1999 sq. ft

1st Floor: 1367 sq. ft, 2nd Floor: 632 sq. ft

Excluded: Garage 703 sq. ft, Low ceiling 184 sq. ft, Open to below 14 sq. ft, Garage loft 375 sq. ft, Walls: 258 sq. ft

Property summary





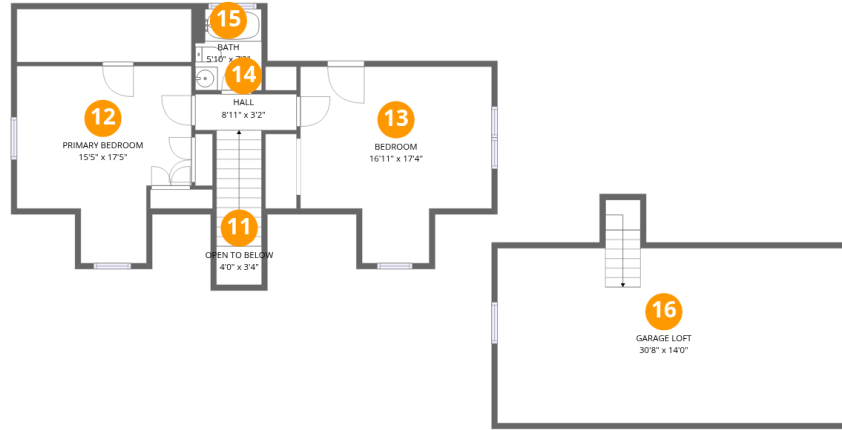
Room dimensions

Floor 1

Total:1367sqft

Excluded: 703sqft

#		Dimensions	sqft	Counted as living area
1	Kitchen	10'1" x 14'2"	143 sq. ft	Yes
2	Dining Area	14'9" x 13'4"	197 sq. ft	Yes
3	Hall	19'0" x 3'8"	70 sq. ft	Yes
4	Foyer	9'4" x 13'8"	127 sq. ft	Yes
5	Living Room	17'3" x 13'3"	229 sq. ft	Yes
6	Bedroom	12'6" x 13'10"	172 sq. ft	Yes
7	Great Room	17'11" x 11'9"	211 sq. ft	Yes
8	Utility	11'11" x 10'1"	120 sq. ft	Yes
9	Bath	6'9" x 10'1"	68 sq. ft	Yes
10	Garage	30'8" x 22'10"	701 sq. ft	No



Room dimensions

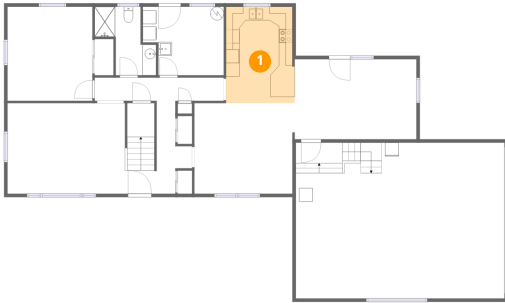
Floor 2

Total:632sqft

Excluded: 573sqft

#		Dimensions	sqft	Counted as living area
11	Open To Below	4'0" x 3'4"	13 sq. ft	No
12	Primary Bedroom	15'5" x 17'5"	268 sq. ft	Yes
13	Bedroom	16'11" x 17'4"	293 sq. ft	Yes
14	Hall	8'11" x 3'2"	28 sq. ft	Yes
15	Bath	5'10" x 7'2"	42 sq. ft	Yes
16	Garage Loft	30'8" x 14'0"	429 sq. ft	No

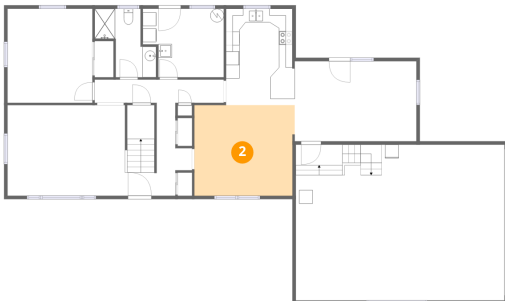
1 Floor 1 - Kitchen



Dimensions: 10'1" x 14'2"
Area: 143 sq. ft
Counted as living area: Yes

Heated: Yes
Finished: Yes
Enclosed: Yes
Contiguous: Yes
Permitted: Yes
Wet space: No
Addition: No
Conversion: No

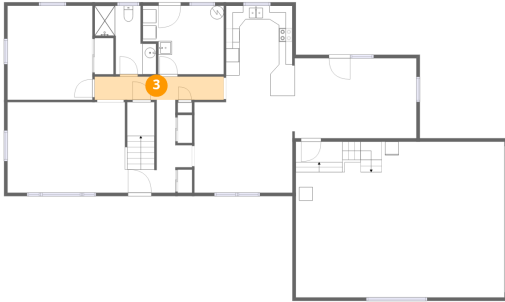
2 Floor 1 - Dining Area



Dimensions: 14'9" x 13'4"
Area: 197 sq. ft
Counted as living area: Yes

Heated: Yes
Finished: Yes
Enclosed: Yes
Contiguous: Yes
Permitted: Yes
Wet space: No
Addition: No
Conversion: No

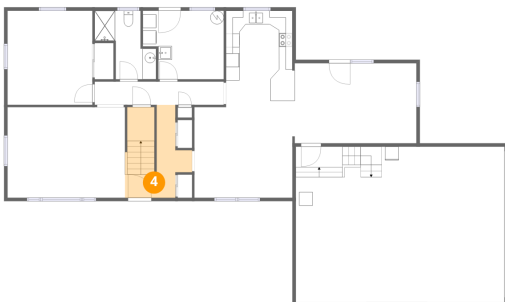
3 Floor 1 - Hall



Dimensions: 19'0" x 3'8"
Area: 70 sq. ft
Counted as living area: Yes

Heated: Yes
Finished: Yes
Enclosed: Yes
Contiguous: Yes
Permitted: Yes
Wet space: No
Addition: No
Conversion: No

4 Floor 1 - Foyer



Dimensions: 9'4" x 13'8"
Area: 127 sq. ft
Counted as living area: Yes

Heated: Yes
Finished: Yes
Enclosed: Yes
Contiguous: Yes
Permitted: Yes
Wet space: No
Addition: No
Conversion: No

5 Floor 1 - Living Room



Dimensions: 17'3" x 13'3"
Area: 229 sq. ft
Counted as living area: Yes

Heated: Yes
Finished: Yes
Enclosed: Yes
Contiguous: Yes
Permitted: Yes
Wet space: No
Addition: No
Conversion: No

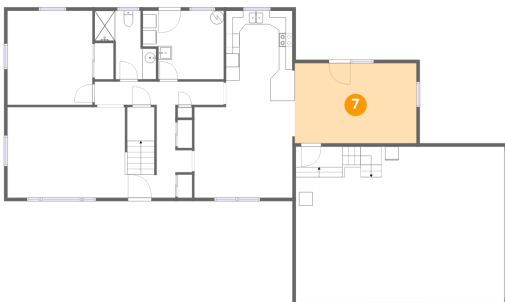
6 Floor 1 - Bedroom



Dimensions: 12'6" x 13'10"
Area: 172 sq. ft
Counted as living area: Yes

Heated: Yes
Finished: Yes
Enclosed: Yes
Contiguous: Yes
Permitted: Yes
Wet space: No
Addition: No
Conversion: No

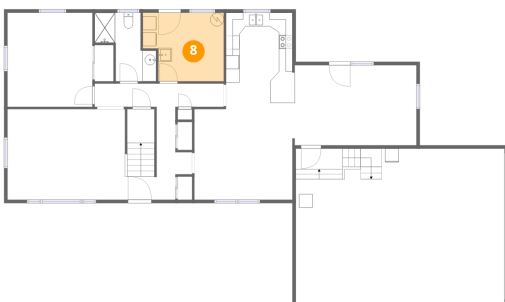
7 Floor 1 - Great Room



Dimensions: 17'11" x 11'9"
Area: 211 sq. ft
Counted as living area: Yes

Heated: Yes
Finished: Yes
Enclosed: Yes
Contiguous: Yes
Permitted: Yes
Wet space: No
Addition: No
Conversion: No

8 Floor 1 - Utility



Dimensions: 11'11" x 10'1"
Area: 120 sq. ft
Counted as living area: Yes

Heated: Yes
Finished: Yes
Enclosed: Yes
Contiguous: Yes
Permitted: Yes
Wet space: No
Addition: No
Conversion: No

9 Floor 1 - Bath



Dimensions: 6'9" x 10'1"
Area: 68 sq. ft
Counted as living area: Yes

Heated: Yes
Finished: Yes
Enclosed: Yes
Contiguous: Yes
Permitted: Yes
Wet space: Yes
Addition: No
Conversion: No

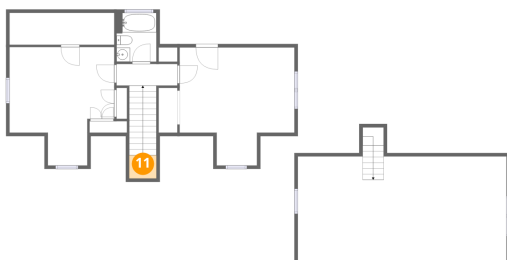
10 Floor 1 - Garage



Dimensions: 30'8" x 22'10"
Area: 701 sq. ft
Counted as living area: No

Heated: No
Finished: No
Enclosed: Yes
Contiguous: Yes
Permitted: Yes
Wet space: No
Addition: No
Conversion: No

11 Floor 2 - Open To Below



Dimensions: 4'0" x 3'4"
Area: 13 sq. ft
Counted as living area: No

Heated: No
Finished: No
Enclosed: No
Contiguous: Yes
Permitted: No
Wet space: No
Addition: No
Conversion: No

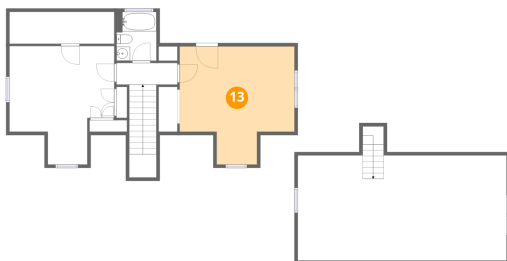
12 Floor 2 - Primary Bedroom



Dimensions: 15'5" x 17'5"
Area: 268 sq. ft
Counted as living area: Yes

Heated: Yes
Finished: Yes
Enclosed: Yes
Contiguous: Yes
Permitted: Yes
Wet space: No
Addition: No
Conversion: No

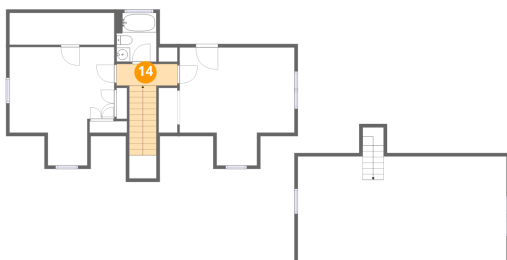
13 Floor 2 - Bedroom



Dimensions: 16'11" x 17'4"
Area: 293 sq. ft
Counted as living area: Yes

Heated: Yes
Finished: Yes
Enclosed: Yes
Contiguous: Yes
Permitted: Yes
Wet space: No
Addition: No
Conversion: No

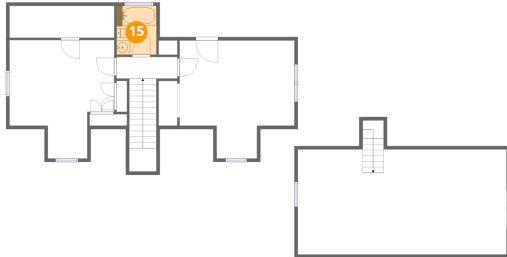
14 Floor 2 - Hall



Dimensions: 8'11" x 3'2"
Area: 28 sq. ft
Counted as living area: Yes

Heated: Yes
Finished: Yes
Enclosed: Yes
Contiguous: Yes
Permitted: Yes
Wet space: No
Addition: No
Conversion: No

15 Floor 2 - Bath



Dimensions: 5'10" x 7'2"
Area: 42 sq. ft
Counted as living area: Yes

Heated: Yes
Finished: Yes
Enclosed: Yes
Contiguous: Yes
Permitted: Yes
Wet space: Yes
Addition: No
Conversion: No

16 Floor 2 - Garage Loft



Dimensions: 30'8" x 14'0"
Area: 429 sq. ft
Counted as living area: No

Heated: No
Finished: No
Enclosed: Yes
Contiguous: Yes
Permitted: Yes
Wet space: No
Addition: No
Conversion: No