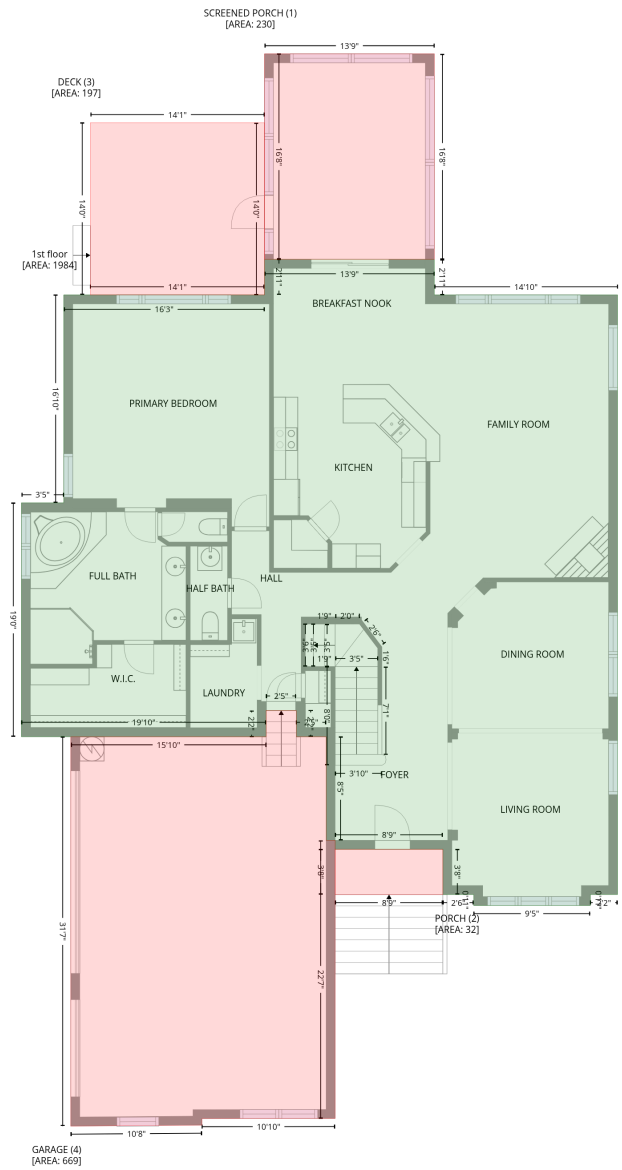


4089 Tonbridge Court, Harrisburg, Cabarrus County, North Carolina, United States, 28075

Gross Living Area: 3568 sq. ft

Level 1



4089 Tonbridge Court, Harrisburg, Cabarrus County, North Carolina, United States, 28075

Gross Living Area: 3568 sq. ft

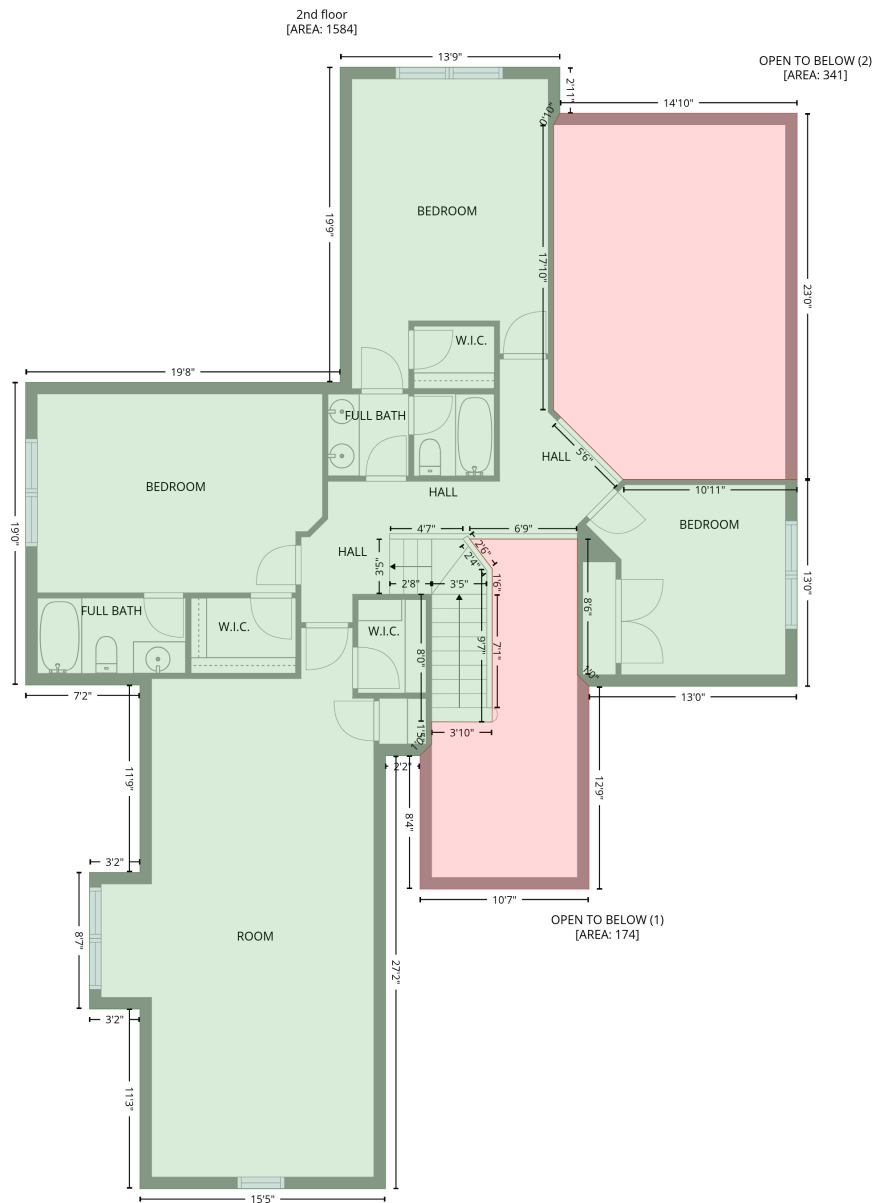
Level 1

Space	Area (sq. ft)	Calculation <small>Coordinate Polygon Area Algorithm using inches</small>
1st floor (Living area)	1984	$-\left((531.2 + 531.2) * (-71.9 - -37.3) + (531.2 + 709.5) * (-37.3 - -37.3) + (709.5 + 709.5) * (-37.3 - 546.5) + (709.5 + 683) * (546.5 - 546.5) + (683 + 683) * (546.5 - 557.2) + (683 + 569.6) * (557.2 - 557.2) + (569.6 + 569.6) * (557.2 - 546.5) + (569.6 + 539.6) * (546.5 - 546.5) + (539.6 + 539.6) * (546.5 - 502.5) + (539.6 + 434.8) * (502.5 - 502.5) + (434.8 + 434.8) * (502.5 - 493.7) + (434.8 + 426) * (493.7 - 493.7) + (426 + 426) * (493.7 - 392.9) + (426 + 396.9) * (392.9 - 392.9) + (396.9 + 396.9) * (392.9 - 367.3) + (396.9 + 367.6) * (367.3 - 367.3) + (367.6 + 367.6) * (367.3 - 392.9) + (367.6 + 129.5) * (392.9 - 392.9) + (129.5 + 129.5) * (392.9 - 165.2) + (129.5 + 170.7) * (165.2 - 165.2) + (170.7 + 170.7) * (165.2 - -37.3) + (170.7 + 366) * (-37.3 - -37.3) + (366 + 366) * (-37.3 - -71.9) + (366 + 531.2) * (-71.9 - -71.9)) * 0.5 * 0.00694$
SCREENED PORCH (Non-living area)	230	$-\left((531.2 + 531.2) * (-272 - -71.9) + (531.2 + 366) * (-71.9 - -71.9) + (366 + 366) * (-71.9 - -272) + (366 + 531.2) * (-272 - -272)) * 0.5 * 0.00694$
PORCH (Non-living area)	32	$-\left((539.6 + 539.6) * (502.5 - 546.5) + (539.6 + 434.8) * (546.5 - 546.5) + (434.8 + 434.8) * (546.5 - 502.5) + (434.8 + 539.6) * (502.5 - 502.5)) * 0.5 * 0.00694$
DECK (Non-living area)	197	$-\left((366 + 366) * (-204.9 - -37.3) + (366 + 196.6) * (-37.3 - -37.3) + (196.6 + 196.6) * (-37.3 - -204.9) + (196.6 + 366) * (-204.9 - -204.9)) * 0.5 * 0.00694$
GARAGE (Non-living area)	669	$-\left((396.9 + 396.9) * (367.3 - 392.9) + (396.9 + 426) * (392.9 - 392.9) + (426 + 426) * (392.9 - 493.7) + (426 + 434.8) * (493.7 - 493.7) + (434.8 + 434.8) * (493.7 - 764.5) + (434.8 + 305.2) * (764.5 - 764.7) + (305.2 + 305.2) * (764.7 - 771) + (305.2 + 177.6) * (771 - 772) + (177.6 + 177.6) * (772 - 392.9) + (177.6 + 367.6) * (392.9 - 392.9) + (367.6 + 367.6) * (392.9 - 367.3) + (367.6 + 396.9) * (367.3 - 367.3)) * 0.5 * 0.00694$

4089 Tonbridge Court, Harrisburg, Cabarrus County, North Carolina, United States, 28075

Gross Living Area: 3568 sq. ft

Level 2



4089 Tonbridge Court, Harrisburg, Cabarrus County, North Carolina, United States, 28075

Gross Living Area: 3568 sq. ft

Level 2

Space	Area (sq. ft)	Calculation <small>Coordinate Polygon Area Algorithm using inches</small>
2nd floor (Living area)	1584	$ \begin{aligned} & -((531.1 + 531.1) * (-71.9 - -37.3) + (531.1 + 526.4) * (-37.3 - -28.5) + (526.4 + 526.4) * (-28.5 - 186) \\ & + (526.4 + 531.9) * (186 - 191.5) + (531.9 + 578.6) * (191.5 - 238.2) + (578.6 + 709.5) * (238.2 - 238.2) \\ & + (709.5 + 709.5) * (238.2 - 393.9) + (709.5 + 553.1) * (393.9 - 393.9) + (553.1 + 544.3) * (393.9 - 385.2) \\ & + (544.3 + 544.3) * (385.2 - 283.1) + (544.3 + 463.3) * (283.1 - 283.1) + (463.3 + 480.2) * (283.1 - 305.4) \\ & + (480.2 + 480.2) * (305.4 - 420.9) + (480.2 + 434.8) * (420.9 - 420.7) + (434.8 + 434.8) * (420.7 - 437.4) \\ & + (434.8 + 426) * (437.4 - 446.1) + (426 + 400.1) * (446.1 - 446.1) + (400.1 + 400.1) * (446.1 - 771.9) \\ & + (400.1 + 215.5) * (771.9 - 771.9) + (215.5 + 215.5) * (771.9 - 636.7) + (215.5 + 177.6) * (636.7 - 636.7) \\ & + (177.6 + 177.6) * (636.7 - 533.9) + (177.6 + 215.5) * (533.9 - 533.9) + (215.5 + 215.5) * (533.9 - 392.9) \\ & + (215.5 + 129.5) * (392.9 - 392.9) + (129.5 + 129.5) * (392.9 - 165.2) + (129.5 + 366) * (165.2 - 165.2) \\ & + (366 + 366) * (165.2 - -71.9) + (366 + 531.1) * (-71.9 - -71.9)) * 0.5 * 0.00694 \end{aligned} $
OPEN TO BELOW (Non-living area)	174	$ \begin{aligned} & -((544.3 + 544.3) * (283.1 - 385.2) + (544.3 + 553.1) * (385.2 - 393.9) + (553.1 + 553.1) * (393.9 - 546.5) \\ & + (553.1 + 426) * (546.5 - 546.5) + (426 + 426) * (546.5 - 446.1) + (426 + 434.8) * (446.1 - 437.4) \\ & + (434.8 + 434.8) * (437.4 - 420.7) + (434.8 + 480.2) * (420.7 - 420.9) + (480.2 + 480.2) * (420.9 - 305.4) \\ & + (480.2 + 463.3) * (305.4 - 283.1) + (463.3 + 544.3) * (283.1 - 283.1)) * 0.5 * 0.00694 \end{aligned} $
OPEN TO BELOW (Non-living area)	341	$ \begin{aligned} & -((709.5 + 709.5) * (-37.3 - 238.2) + (709.5 + 578.6) * (238.2 - 238.2) + (578.6 + 531.9) * (238.2 - 191.5) \\ & + (531.9 + 530.3) * (191.5 - 189.8) + (530.3 + 528.2) * (189.8 - 187.6) + (528.2 + 526.4) * (187.6 - 186) \\ & + (526.4 + 526.4) * (186 - -28.5) + (526.4 + 531.1) * (-28.5 - -37.3) + (531.1 + 709.5) * (-37.3 - -37.3)) * 0.5 * 0.00694 \end{aligned} $