

Home data report

814 S Meadowbrook Dr, Bloomington, IN, US



Total Area: 2675 sq. ft

Basement: 377 sq. ft, 1st Floor: 1428 sq. ft, 2nd Floor: 870 sq. ft

Excluded: Utility and storage room 618 sq. ft, Fireplace 4 sq. ft, Walls: 221 sq. ft

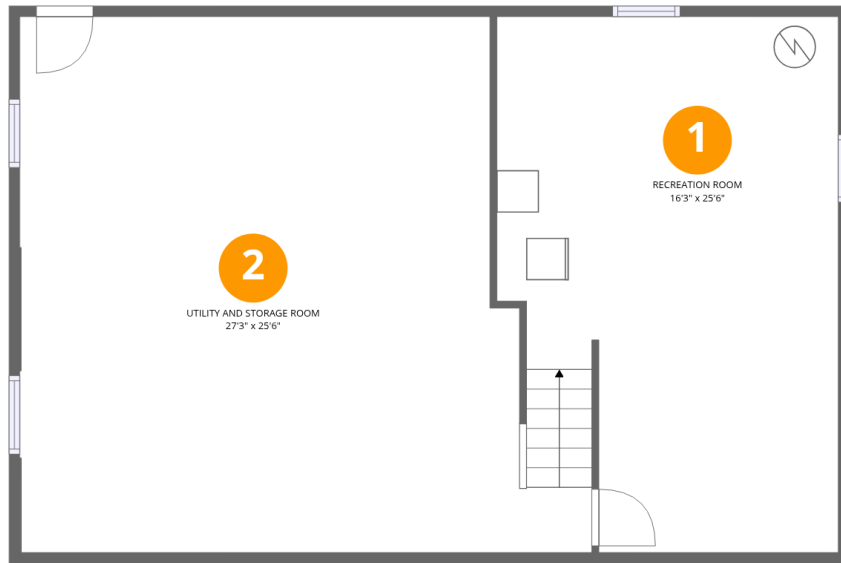
Property summary

 **3** Floors

 **4** Bedrooms

 **3** Bathrooms

814 S Meadowbrook Dr, Bloomington, IN, US



Room dimensions

Floor 1 Below grade

Total: 377 sqft

Excluded: 618 sqft

#		Dimensions	sqft	Counted as living area
1	Recreation Room	16'3" x 25'6"	415 sq. ft	Yes
2	Utility And Storage Room	27'3" x 25'6"	695 sq. ft	No

814 S Meadowbrook Dr, Bloomington, IN, US



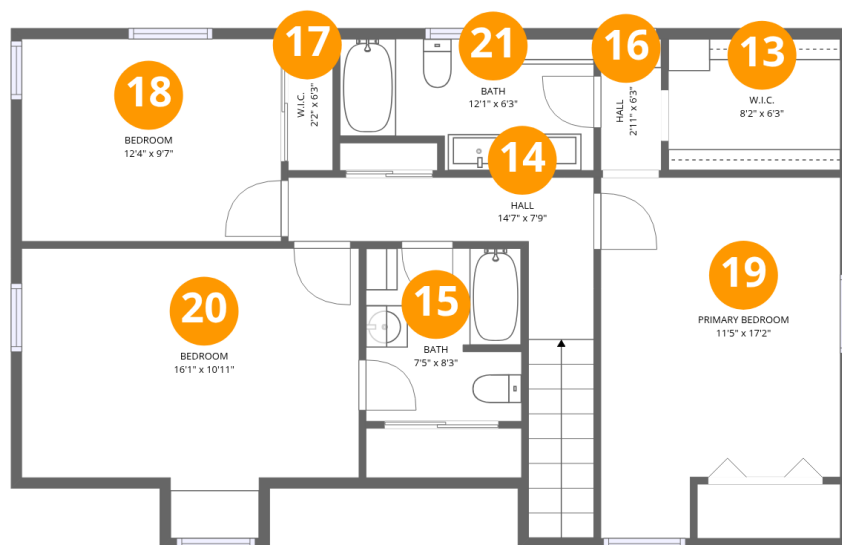
Room dimensions

Floor 2

Total: 1428 sqft Excluded: 4 sqft

#		Dimensions	sqft	Counted as living area
3	Foyer	8'7" x 13'3"	115 sq. ft	Yes
4	Bedroom	12'7" x 12'11"	163 sq. ft	Yes
5	Kitchen	14'10" x 12'4"	184 sq. ft	Yes
6	Living Room	23'10" x 13'3"	315 sq. ft	Yes
7	Family Room	14'10" x 15'10"	235 sq. ft	Yes
8	Dining Room	11'5" x 10'7"	121 sq. ft	Yes
9	Laundry	12'3" x 11'8"	143 sq. ft	Yes
10	Hall	5'9" x 3'3"	19 sq. ft	Yes
11	Mud Room	8'7" x 4'2"	35 sq. ft	Yes
12	Bath	7'8" x 9'5"	72 sq. ft	Yes

814 S Meadowbrook Dr, Bloomington, IN, US



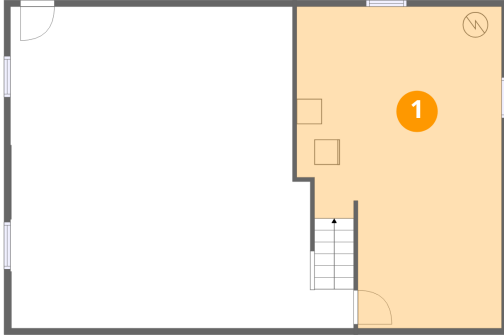
Room dimensions

Floor 3

Total: 870 sqft Excluded: 0 sqft

#		Dimensions	sqft	Counted as living area
13	W.I.C.	8'2" x 6'3"	51 sq. ft	Yes
14	Hall	14'7" x 7'9"	112 sq. ft	Yes
15	Bath	7'5" x 8'3"	61 sq. ft	Yes
16	Hall	2'11" x 6'3"	18 sq. ft	Yes
17	W.I.C.	2'2" x 6'3"	13 sq. ft	Yes
18	Bedroom	12'4" x 9'7"	118 sq. ft	Yes
19	Primary Bedroom	11'5" x 17'2"	196 sq. ft	Yes
20	Bedroom	16'1" x 10'11"	175 sq. ft	Yes
21	Bath	12'1" x 6'3"	76 sq. ft	Yes

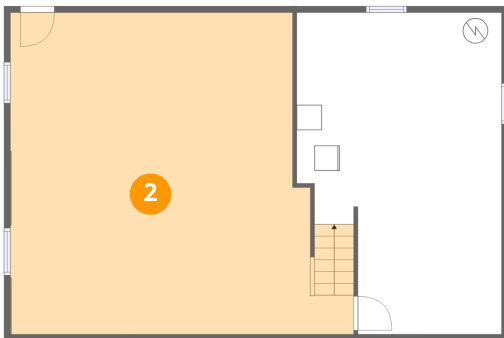
1 Floor 1 - Recreation Room



Dimensions: 16'3" x 25'6"
Area: 415 sq. ft
Counted as living area: Yes

Heated: Yes
Finished: Yes
Enclosed: Yes
Contiguous: Yes
Permitted: Yes
Wet space: No
Addition: No
Conversion: No

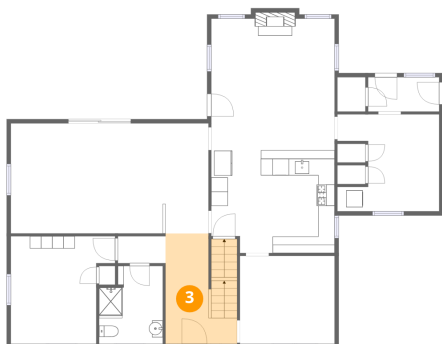
2 Floor 1 - Utility And Storage Room



Dimensions: 27'3" x 25'6"
Area: 695 sq. ft
Counted as living area: No

Heated: Yes
Finished: No
Enclosed: Yes
Contiguous: Yes
Permitted: Yes
Wet space: No
Addition: No
Conversion: No

3 Floor 2 - Foyer



Dimensions: 8'7" x 13'3"
Area: 115 sq. ft
Counted as living area: Yes

Heated: Yes
Finished: Yes
Enclosed: Yes
Contiguous: Yes
Permitted: Yes
Wet space: No
Addition: No
Conversion: No

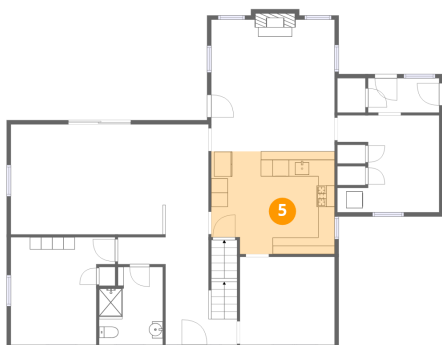
4 Floor 2 - Bedroom



Dimensions: 12'7" x 12'11"
Area: 163 sq. ft
Counted as living area: Yes

Heated: Yes
Finished: Yes
Enclosed: Yes
Contiguous: Yes
Permitted: Yes
Wet space: No
Addition: No
Conversion: No

5 Floor 2 - Kitchen



Dimensions: 14'10" x 12'4"
Area: 184 sq. ft
Counted as living area: Yes

Heated: Yes
Finished: Yes
Enclosed: Yes
Contiguous: Yes
Permitted: Yes
Wet space: No
Addition: No
Conversion: No

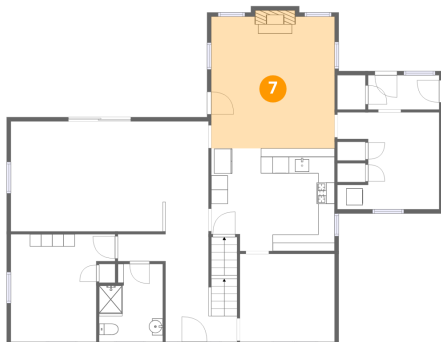
6 Floor 2 - Living Room



Dimensions: 23'10" x 13'3"
Area: 315 sq. ft
Counted as living area: Yes

Heated: Yes
Finished: Yes
Enclosed: Yes
Contiguous: Yes
Permitted: Yes
Wet space: No
Addition: No
Conversion: No

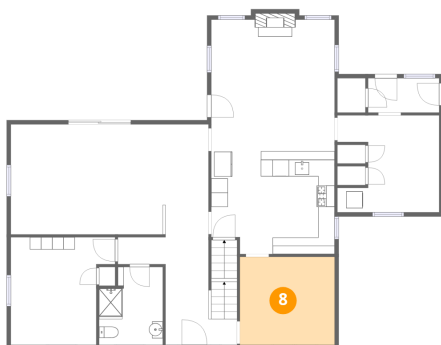
7 Floor 2 - Family Room



Dimensions: 14'10" x 15'10"
Area: 235 sq. ft
Counted as living area: Yes

Heated: Yes
Finished: Yes
Enclosed: Yes
Contiguous: Yes
Permitted: Yes
Wet space: No
Addition: No
Conversion: No

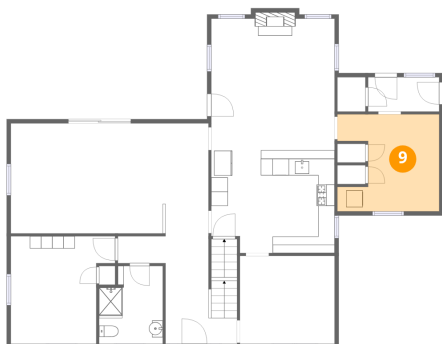
8 Floor 2 - Dining Room



Dimensions: 11'5" x 10'7"
Area: 121 sq. ft
Counted as living area: Yes

Heated: Yes
Finished: Yes
Enclosed: Yes
Contiguous: Yes
Permitted: Yes
Wet space: No
Addition: No
Conversion: No

9 Floor 2 - Laundry



Dimensions: 12'3" x 11'8"
Area: 143 sq. ft
Counted as living area: Yes

Heated: Yes
Finished: Yes
Enclosed: Yes
Contiguous: Yes
Permitted: Yes
Wet space: No
Addition: No
Conversion: No

10 Floor 2 - Hall



Dimensions: 5'9" x 3'3"
Area: 19 sq. ft
Counted as living area: Yes

Heated: Yes
Finished: Yes
Enclosed: Yes
Contiguous: Yes
Permitted: Yes
Wet space: No
Addition: No
Conversion: No

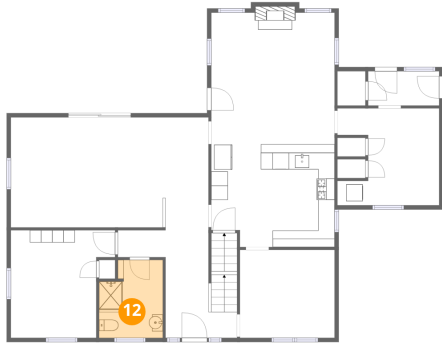
11 Floor 2 - Mud Room



Dimensions: 8'7" x 4'2"
Area: 35 sq. ft
Counted as living area: Yes

Heated: Yes
Finished: Yes
Enclosed: Yes
Contiguous: Yes
Permitted: Yes
Wet space: No
Addition: No
Conversion: No

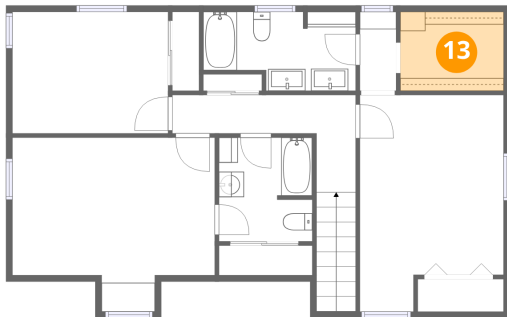
12 Floor 2 - Bath



Dimensions: 7'8" x 9'5"
Area: 72 sq. ft
Counted as living area: Yes

Heated: Yes
Finished: Yes
Enclosed: Yes
Contiguous: Yes
Permitted: Yes
Wet space: Yes
Addition: No
Conversion: No

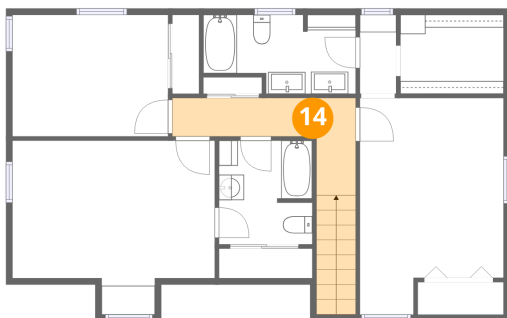
13 Floor 3 - W.I.C.



Dimensions: 8'2" x 6'3"
Area: 51 sq. ft
Counted as living area: Yes

Heated: Yes
Finished: Yes
Enclosed: Yes
Contiguous: Yes
Permitted: Yes
Wet space: No
Addition: No
Conversion: No

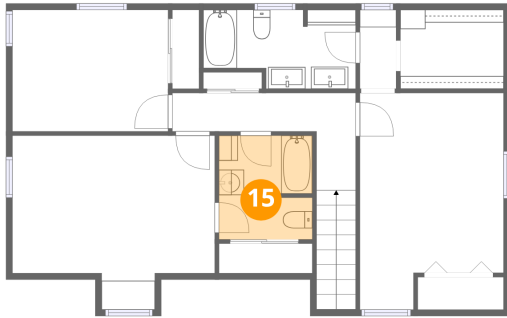
14 Floor 3 - Hall



Dimensions: 14'7" x 7'9"
Area: 112 sq. ft
Counted as living area: Yes

Heated: Yes
Finished: Yes
Enclosed: Yes
Contiguous: Yes
Permitted: Yes
Wet space: No
Addition: No
Conversion: No

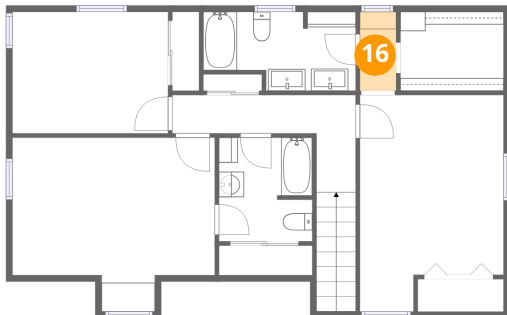
15 Floor 3 - Bath



Dimensions: 7'5" x 8'3"
Area: 61 sq. ft
Counted as living area: Yes

Heated: Yes
Finished: Yes
Enclosed: Yes
Contiguous: Yes
Permitted: Yes
Wet space: Yes
Addition: No
Conversion: No

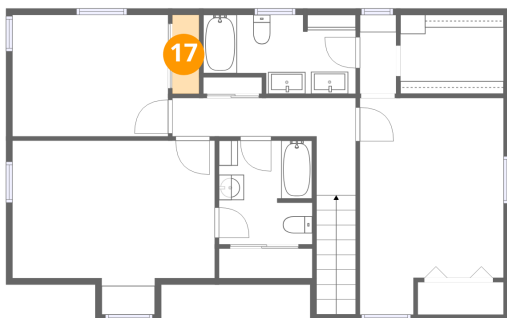
16 Floor 3 - Hall



Dimensions: 2'11" x 6'3"
Area: 18 sq. ft
Counted as living area: Yes

Heated: Yes
Finished: Yes
Enclosed: Yes
Contiguous: Yes
Permitted: Yes
Wet space: No
Addition: No
Conversion: No

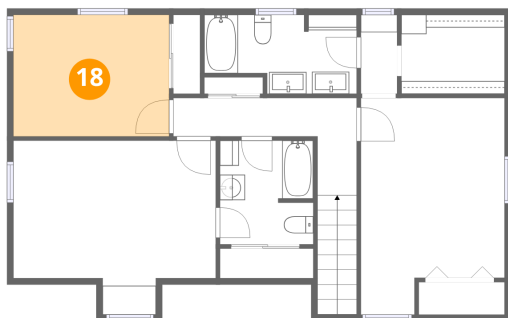
17 Floor 3 - W.I.C.



Dimensions: 2'2" x 6'3"
Area: 13 sq. ft
Counted as living area: Yes

Heated: Yes
Finished: Yes
Enclosed: Yes
Contiguous: Yes
Permitted: Yes
Wet space: No
Addition: No
Conversion: No

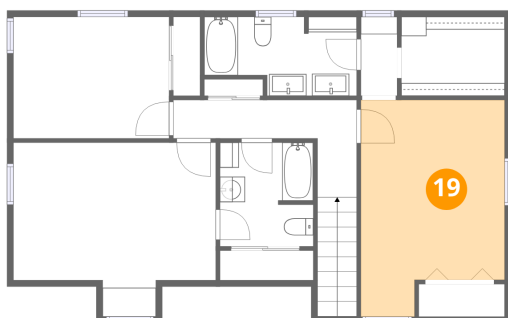
18 Floor 3 - Bedroom



Dimensions: 12'4" x 9'7"
Area: 118 sq. ft
Counted as living area: Yes

Heated: Yes
Finished: Yes
Enclosed: Yes
Contiguous: Yes
Permitted: Yes
Wet space: No
Addition: No
Conversion: No

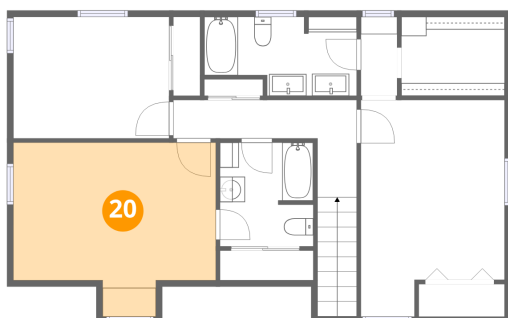
19 Floor 3 - Primary Bedroom



Dimensions: 11'5" x 17'2"
Area: 196 sq. ft
Counted as living area: Yes

Heated: Yes
Finished: Yes
Enclosed: Yes
Contiguous: Yes
Permitted: Yes
Wet space: No
Addition: No
Conversion: No

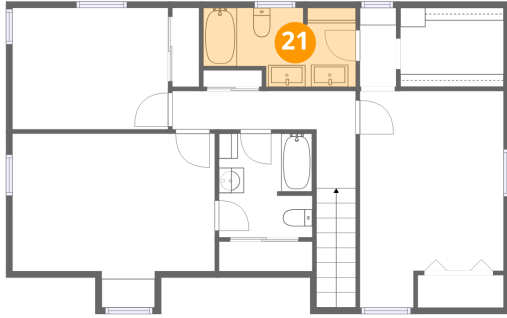
20 Floor 3 - Bedroom



Dimensions: 16'1" x 10'11"
Area: 175 sq. ft
Counted as living area: Yes

Heated: Yes
Finished: Yes
Enclosed: Yes
Contiguous: Yes
Permitted: Yes
Wet space: No
Addition: No
Conversion: No

21 Floor 3 - Bath



Dimensions: 12'1" x 6'3"
Area: 76 sq. ft
Counted as living area: Yes

Heated: Yes
Finished: Yes
Enclosed: Yes
Contiguous: Yes
Permitted: Yes
Wet space: Yes
Addition: No
Conversion: No