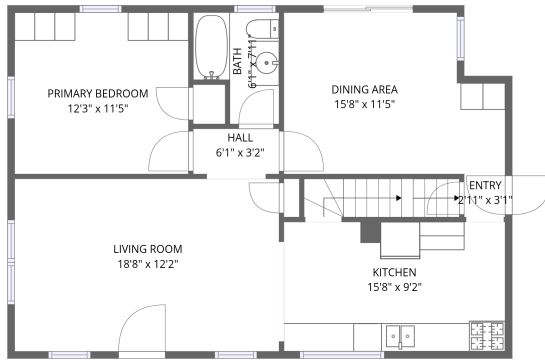
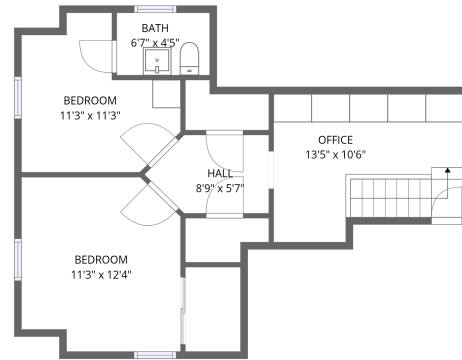


# Home data report

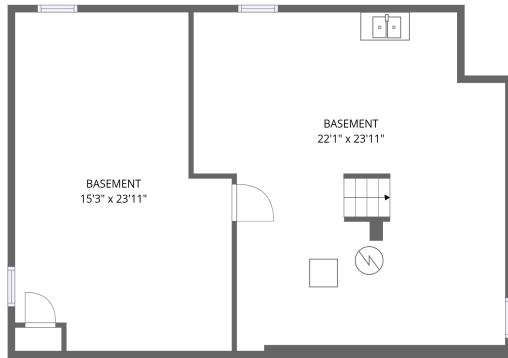
## 121 Country Pkwy, Buffalo, NY, US



1st floor



2nd floor



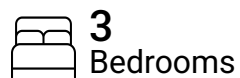
Basement

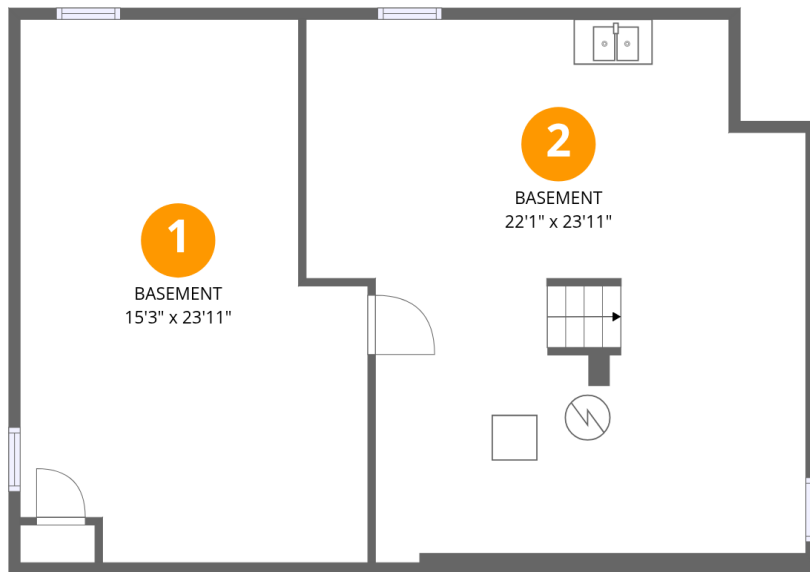
**Total Area: 1312 sq. ft**

Basement: 0 sq. ft, 1st Floor: 813 sq. ft, 2nd Floor: 499 sq. ft

Excluded: Basement 807 sq. ft, Walls: 182 sq. ft

### Property summary





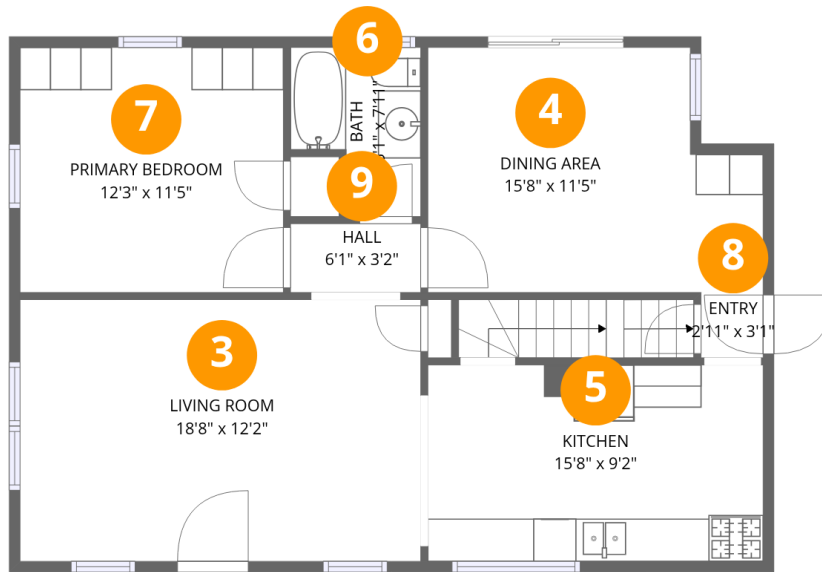
## Room dimensions

Floor 1 Below grade

Total: 0sqft

Excluded: 807sqft

#		Dimensions	sqft	Counted as living area
1	Basement	15'3" x 23'11"	365 sq. ft	No
2	Basement	22'1" x 23'11"	528 sq. ft	No



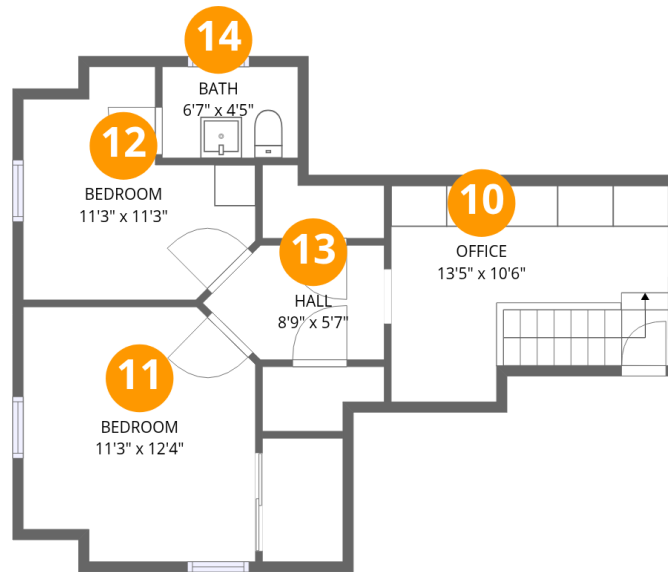
## Room dimensions

Floor 2

Total: 813 sqft

Excluded: 0 sqft

#		Dimensions	sqft	Counted as living area
3	Living Room	18'8" x 12'2"	227 sq. ft	Yes
4	Dining Area	15'8" x 11'5"	179 sq. ft	Yes
5	Kitchen	15'8" x 9'2"	143 sq. ft	Yes
6	Bath	6'1" x 7'11"	48 sq. ft	Yes
7	Primary Bedroom	12'3" x 11'5"	140 sq. ft	Yes
8	Entry	2'11" x 3'1"	9 sq. ft	Yes
9	Hall	6'1" x 3'2"	19 sq. ft	Yes



## Room dimensions

Floor 3

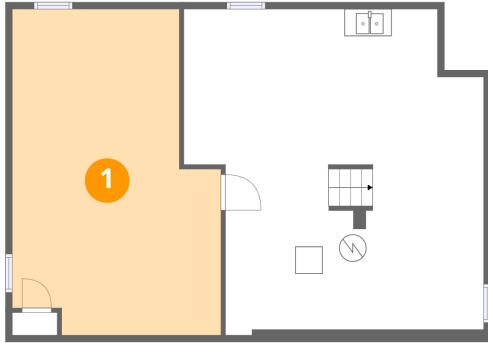
Total:499sqft

Excluded: 0sqft

#		Dimensions	sqft	Counted as living area
10	Office	13'5" x 10'6"	141 sq. ft	Yes
11	Bedroom	11'3" x 12'4"	139 sq. ft	Yes
12	Bedroom	11'3" x 11'3"	127 sq. ft	Yes
13	Hall	8'9" x 5'7"	49 sq. ft	Yes
14	Bath	6'7" x 4'5"	29 sq. ft	Yes

**1** Floor 1 - Basement

---

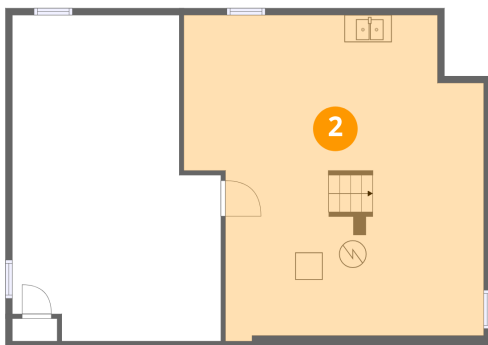


Dimensions: 15'3" x 23'11"  
Area: 365 sq. ft  
Counted as living area: No

Heated: Yes  
Finished: No  
Enclosed: Yes  
Contiguous: Yes  
Permitted: Yes  
Wet space: No  
Addition: No  
Conversion: No

**2** Floor 1 - Basement

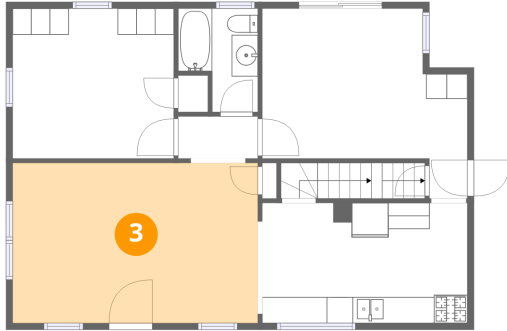
---



Dimensions: 22'1" x 23'11"  
Area: 528 sq. ft  
Counted as living area: No

Heated: Yes  
Finished: No  
Enclosed: Yes  
Contiguous: Yes  
Permitted: Yes  
Wet space: No  
Addition: No  
Conversion: No

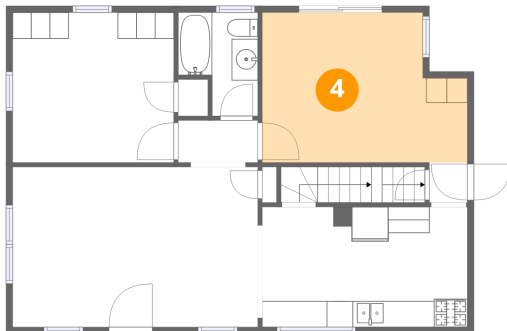
### 3 Floor 2 - Living Room



Dimensions: 18'8" x 12'2"  
Area: 227 sq. ft  
Counted as living area: Yes

Heated: Yes  
Finished: Yes  
Enclosed: Yes  
Contiguous: Yes  
Permitted: Yes  
Wet space: No  
Addition: No  
Conversion: No

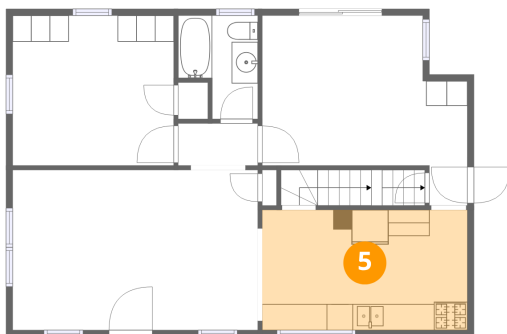
### 4 Floor 2 - Dining Area



Dimensions: 15'8" x 11'5"  
Area: 179 sq. ft  
Counted as living area: Yes

Heated: Yes  
Finished: Yes  
Enclosed: Yes  
Contiguous: Yes  
Permitted: Yes  
Wet space: No  
Addition: No  
Conversion: No

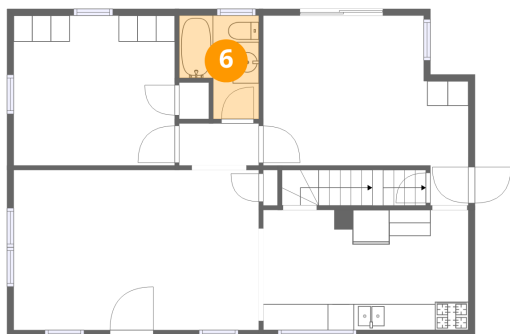
### 5 Floor 2 - Kitchen



Dimensions: 15'8" x 9'2"  
Area: 143 sq. ft  
Counted as living area: Yes

Heated: Yes  
Finished: Yes  
Enclosed: Yes  
Contiguous: Yes  
Permitted: Yes  
Wet space: No  
Addition: No  
Conversion: No

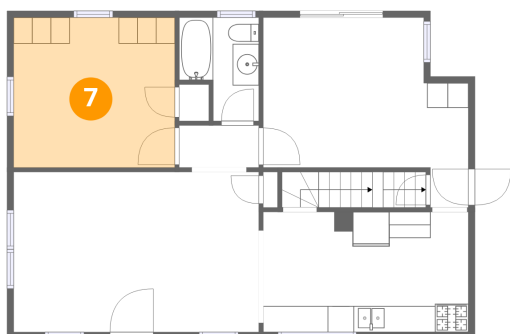
### 6 Floor 2 - Bath



Dimensions: 6'1" x 7'11"  
Area: 48 sq. ft  
Counted as living area: Yes

Heated: Yes  
Finished: Yes  
Enclosed: Yes  
Contiguous: Yes  
Permitted: Yes  
Wet space: Yes  
Addition: No  
Conversion: No

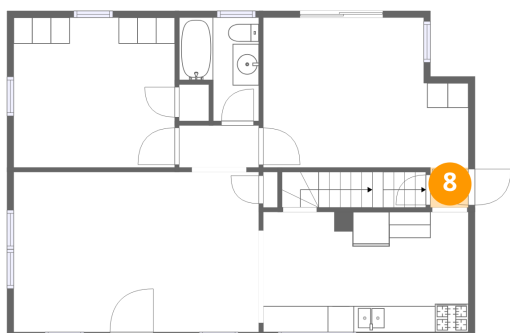
### 7 Floor 2 - Primary Bedroom



Dimensions: 12'3" x 11'5"  
Area: 140 sq. ft  
Counted as living area: Yes

Heated: Yes  
Finished: Yes  
Enclosed: Yes  
Contiguous: Yes  
Permitted: Yes  
Wet space: No  
Addition: No  
Conversion: No

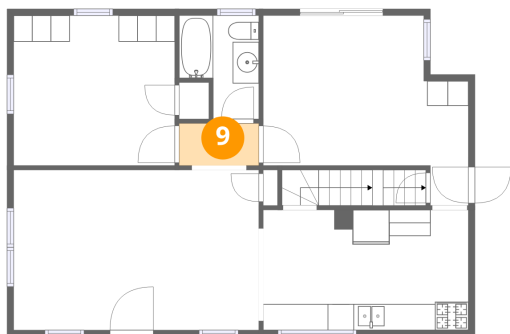
### 8 Floor 2 - Entry



Dimensions: 2'11" x 3'1"  
Area: 9 sq. ft  
Counted as living area: Yes

Heated: Yes  
Finished: Yes  
Enclosed: Yes  
Contiguous: Yes  
Permitted: Yes  
Wet space: No  
Addition: No  
Conversion: No

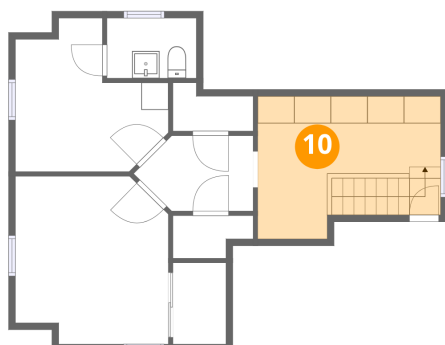
**9** Floor 2 - Hall



Dimensions: 6'1" x 3'2"  
Area: 19 sq. ft  
Counted as living area: Yes

Heated: Yes  
Finished: Yes  
Enclosed: Yes  
Contiguous: Yes  
Permitted: Yes  
Wet space: No  
Addition: No  
Conversion: No

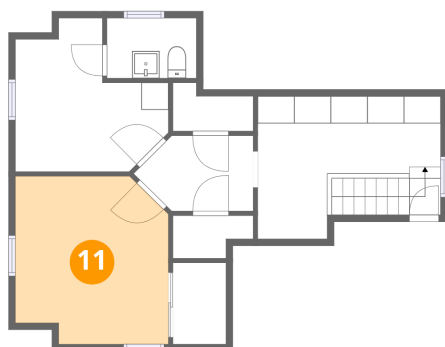
**10** Floor 3 - Office



Dimensions: 13'5" x 10'6"  
Area: 141 sq. ft  
Counted as living area: Yes

Heated: Yes  
Finished: Yes  
Enclosed: Yes  
Contiguous: Yes  
Permitted: Yes  
Wet space: No  
Addition: No  
Conversion: No

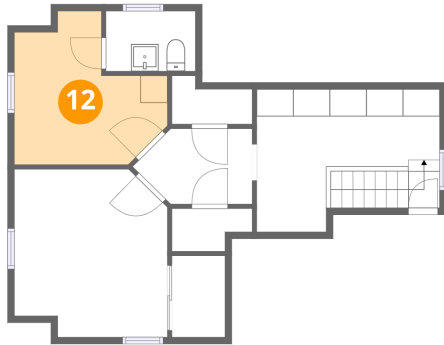
**11** Floor 3 - Bedroom



Dimensions: 11'3" x 12'4"  
Area: 139 sq. ft  
Counted as living area: Yes

Heated: Yes  
Finished: Yes  
Enclosed: Yes  
Contiguous: Yes  
Permitted: Yes  
Wet space: No  
Addition: No  
Conversion: No

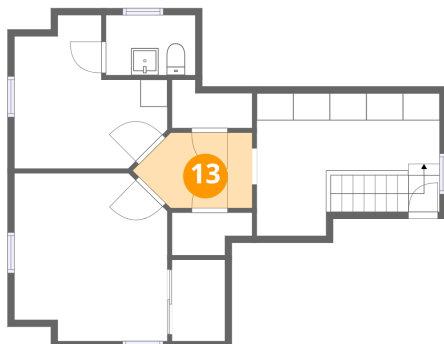
### 12 Floor 3 - Bedroom



Dimensions: 11'3" x 11'3"  
Area: 127 sq. ft  
Counted as living area: Yes

Heated: Yes  
Finished: Yes  
Enclosed: Yes  
Contiguous: Yes  
Permitted: Yes  
Wet space: No  
Addition: No  
Conversion: No

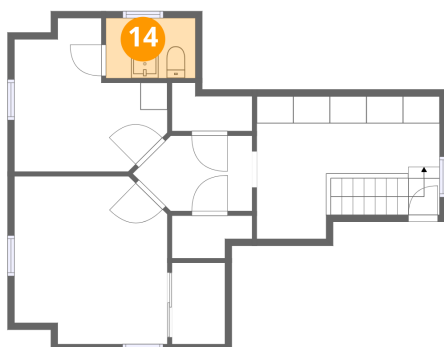
### 13 Floor 3 - Hall



Dimensions: 8'9" x 5'7"  
Area: 49 sq. ft  
Counted as living area: Yes

Heated: Yes  
Finished: Yes  
Enclosed: Yes  
Contiguous: Yes  
Permitted: Yes  
Wet space: No  
Addition: No  
Conversion: No

### 14 Floor 3 - Bath



Dimensions: 6'7" x 4'5"  
Area: 29 sq. ft  
Counted as living area: Yes

Heated: Yes  
Finished: Yes  
Enclosed: Yes  
Contiguous: Yes  
Permitted: Yes  
Wet space: Yes  
Addition: No  
Conversion: No