

Home data report

483 White Sand Trail, Castle Rock, Colorado 80104, United States



Total Area: 2452 sq. ft

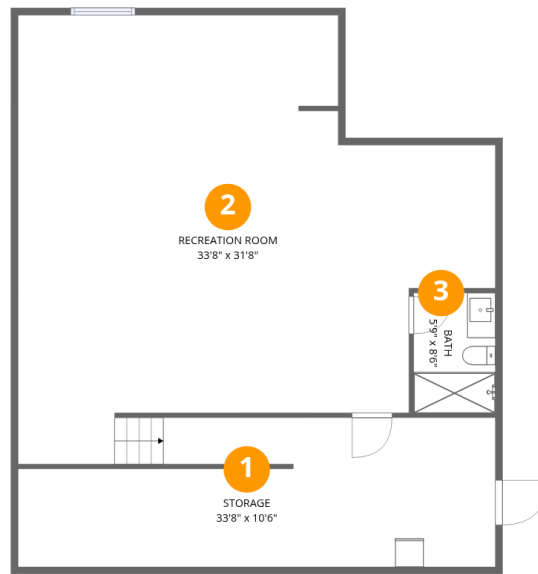
1st Floor: 878 sq. ft, 2nd Floor: 1574 sq. ft

Excluded: Storage 330 sq. ft, Garage 370 sq. ft, Porch 159 sq. ft, Patio 299 sq. ft, Walls: 197 sq. ft

Property summary



483 White Sand Trail, Castle Rock, Colorado 80104, United States



Room dimensions

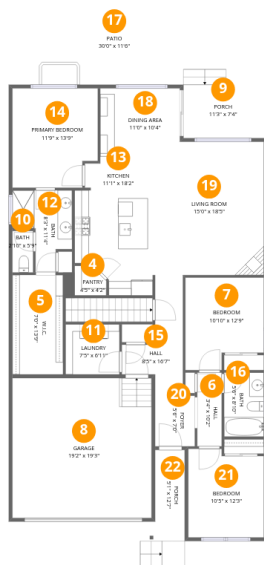
Floor 1

Total:878sqft

Excluded: 330sqft

#		Dimensions	sqft	Counted as living area
1	Storage	33'8" x 10'6"	326 sq. ft	No
2	Recreation Room	33'8" x 31'8"	813 sq. ft	Yes
3	Bath	5'9" x 8'6"	49 sq. ft	Yes

483 White Sand Trail, Castle Rock, Colorado 80104, United States



Room dimensions

Floor 2

Total:1574sqft Excluded: 828sqft

#		Dimensions	sqft	Counted as living area
4	Pantry	4'5" x 4'2"	16 sq. ft	Yes
5	W.I.C.	7'0" x 13'9"	99 sq. ft	Yes
6	Hall	3'4" x 10'2"	34 sq. ft	Yes
7	Bedroom	10'10" x 12'9"	124 sq. ft	Yes
8	Garage	19'2" x 19'3"	370 sq. ft	No
9	Porch	11'3" x 7'4"	83 sq. ft	No
10	Bath	2'10" x 5'9"	16 sq. ft	Yes
11	Laundry	7'5" x 6'11"	51 sq. ft	Yes
12	Bath	8'3" x 11'4"	67 sq. ft	Yes
13	Kitchen	11'1" x 18'2"	178 sq. ft	Yes
14	Primary Bedroom	11'9" x 13'9"	154 sq. ft	Yes

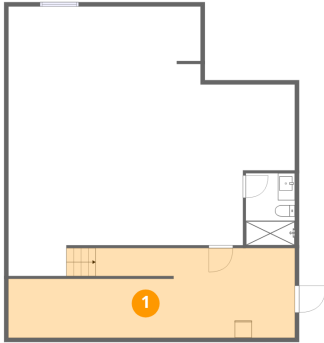
Home data report

483 White Sand Trail, Castle Rock, Colorado 80104, United States

#		Dimensions	sqft	Counted as living area
15	Hall	8'5" x 16'7"	82 sq. ft	Yes
16	Bath	5'6" x 8'10"	48 sq. ft	Yes
17	Patio	30'0" x 11'6"	299 sq. ft	No
18	Dining Area	11'0" x 10'4"	114 sq. ft	Yes
19	Living Room	15'0" x 18'5"	265 sq. ft	Yes
20	Foyer	5'6" x 7'0"	38 sq. ft	Yes
21	Bedroom	10'5" x 12'3"	121 sq. ft	Yes
22	Porch	5'1" x 12'7"	76 sq. ft	No

483 White Sand Trail, Castle Rock, Colorado 80104, United States

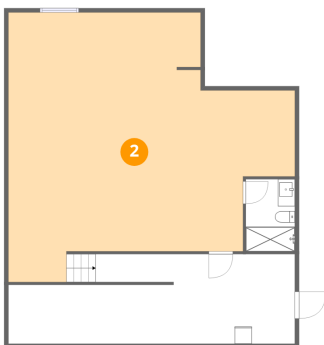
1 Floor 1 - Storage



Dimensions: 33'8" x 10'6"
Area: 326 sq. ft
Counted as living area: No

Heated: No
Finished: No
Enclosed: No
Contiguous: Yes
Permitted: Yes
Wet space: No
Addition: No
Conversion: No

2 Floor 1 - Recreation Room

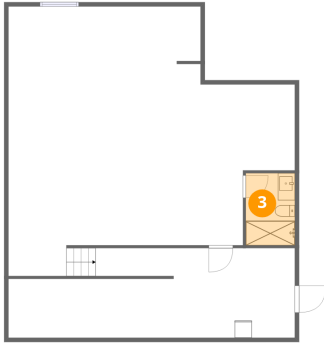


Dimensions: 33'8" x 31'8"
Area: 813 sq. ft
Counted as living area: No

Heated: Yes
Finished: Yes
Enclosed: Yes
Contiguous: No
Permitted: Yes
Wet space: No
Addition: No
Conversion: No

483 White Sand Trail, Castle Rock, Colorado 80104, United States

3 Floor 1 - Bath



Dimensions: 5'9" x 8'6"
Area: 49 sq. ft
Counted as living area: No

Heated: Yes
Finished: Yes
Enclosed: Yes
Contiguous: No
Permitted: Yes
Wet space: Yes
Addition: No
Conversion: No

4 Floor 2 - Pantry



Dimensions: 4'5" x 4'2"
Area: 16 sq. ft
Counted as living area: Yes

Heated: Yes
Finished: Yes
Enclosed: Yes
Contiguous: Yes
Permitted: Yes
Wet space: No
Addition: No
Conversion: No

5 Floor 2 - W.I.C.



Dimensions: 7'0" x 13'9"
Area: 99 sq. ft
Counted as living area: Yes

Heated: Yes
Finished: Yes
Enclosed: Yes
Contiguous: Yes
Permitted: Yes
Wet space: No
Addition: No
Conversion: No

483 White Sand Trail, Castle Rock, Colorado 80104, United States

6 Floor 2 - Hall



Dimensions: 3'4" x 10'2"
Area: 34 sq. ft
Counted as living area: Yes

Heated: Yes
Finished: Yes
Enclosed: Yes
Contiguous: Yes
Permitted: Yes
Wet space: No
Addition: No
Conversion: No

7 Floor 2 - Bedroom



Dimensions: 10'10" x 12'9"
Area: 124 sq. ft
Counted as living area: Yes

Heated: Yes
Finished: Yes
Enclosed: Yes
Contiguous: Yes
Permitted: Yes
Wet space: No
Addition: No
Conversion: No

8 Floor 2 - Garage



Dimensions: 19'2" x 19'3"
Area: 370 sq. ft
Counted as living area: No

Heated: No
Finished: No
Enclosed: Yes
Contiguous: Yes
Permitted: Yes
Wet space: No
Addition: No
Conversion: No

483 White Sand Trail, Castle Rock, Colorado 80104, United States

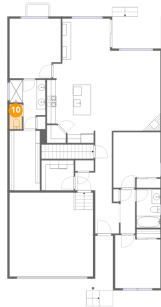
9 Floor 2 - Porch



Dimensions: 11'3" x 7'4"
Area: 83 sq. ft
Counted as living area: No

Heated: No
Finished: No
Enclosed: No
Contiguous: Yes
Permitted: Yes
Wet space: No
Addition: No
Conversion: No

10 Floor 2 - Bath



Dimensions: 2'10" x 5'9"
Area: 16 sq. ft
Counted as living area: Yes

Heated: Yes
Finished: Yes
Enclosed: Yes
Contiguous: Yes
Permitted: Yes
Wet space: Yes
Addition: No
Conversion: No

11 Floor 2 - Laundry



Dimensions: 7'5" x 6'11"
Area: 51 sq. ft
Counted as living area: Yes

Heated: Yes
Finished: Yes
Enclosed: Yes
Contiguous: Yes
Permitted: Yes
Wet space: No
Addition: No
Conversion: No

483 White Sand Trail, Castle Rock, Colorado 80104, United States

12 Floor 2 - Bath



Dimensions: 8'3" x 11'4"
Area: 67 sq. ft
Counted as living area: Yes

Heated: Yes
Finished: Yes
Enclosed: Yes
Contiguous: Yes
Permitted: Yes
Wet space: Yes
Addition: No
Conversion: No

13 Floor 2 - Kitchen



Dimensions: 11'1" x 18'2"
Area: 178 sq. ft
Counted as living area: Yes

Heated: Yes
Finished: Yes
Enclosed: Yes
Contiguous: Yes
Permitted: Yes
Wet space: No
Addition: No
Conversion: No

14 Floor 2 - Primary Bedroom



Dimensions: 11'9" x 13'9"
Area: 154 sq. ft
Counted as living area: Yes

Heated: Yes
Finished: Yes
Enclosed: Yes
Contiguous: Yes
Permitted: Yes
Wet space: No
Addition: No
Conversion: No

483 White Sand Trail, Castle Rock, Colorado 80104, United States

15 Floor 2 - Hall



Dimensions: 8'5" x 16'7"
Area: 82 sq. ft
Counted as living area: Yes

Heated: Yes
Finished: Yes
Enclosed: Yes
Contiguous: Yes
Permitted: Yes
Wet space: No
Addition: No
Conversion: No

16 Floor 2 - Bath



Dimensions: 5'6" x 8'10"
Area: 48 sq. ft
Counted as living area: Yes

Heated: Yes
Finished: Yes
Enclosed: Yes
Contiguous: Yes
Permitted: Yes
Wet space: Yes
Addition: No
Conversion: No

17 Floor 2 - Patio



Dimensions: 30'0" x 11'6"
Area: 299 sq. ft
Counted as living area: No

Heated: No
Finished: No
Enclosed: No
Contiguous: Yes
Permitted: Yes
Wet space: No
Addition: No
Conversion: No

483 White Sand Trail, Castle Rock, Colorado 80104, United States

18 Floor 2 - Dining Area



Dimensions: 11'0" x 10'4"
Area: 114 sq. ft
Counted as living area: Yes

Heated: Yes
Finished: Yes
Enclosed: Yes
Contiguous: Yes
Permitted: Yes
Wet space: No
Addition: No
Conversion: No

19 Floor 2 - Living Room



Dimensions: 15'0" x 18'5"
Area: 265 sq. ft
Counted as living area: Yes

Heated: Yes
Finished: Yes
Enclosed: Yes
Contiguous: Yes
Permitted: Yes
Wet space: No
Addition: No
Conversion: No

20 Floor 2 - Foyer



Dimensions: 5'6" x 7'0"
Area: 38 sq. ft
Counted as living area: Yes

Heated: Yes
Finished: Yes
Enclosed: Yes
Contiguous: Yes
Permitted: Yes
Wet space: No
Addition: No
Conversion: No

483 White Sand Trail, Castle Rock, Colorado 80104, United States

21 Floor 2 - Bedroom



Dimensions: 10'5" x 12'3"
Area: 121 sq. ft
Counted as living area: Yes

Heated: Yes
Finished: Yes
Enclosed: Yes
Contiguous: Yes
Permitted: Yes
Wet space: No
Addition: No
Conversion: No

22 Floor 2 - Porch



Dimensions: 5'1" x 12'7"
Area: 76 sq. ft
Counted as living area: No

Heated: No
Finished: No
Enclosed: No
Contiguous: Yes
Permitted: Yes
Wet space: No
Addition: No
Conversion: No