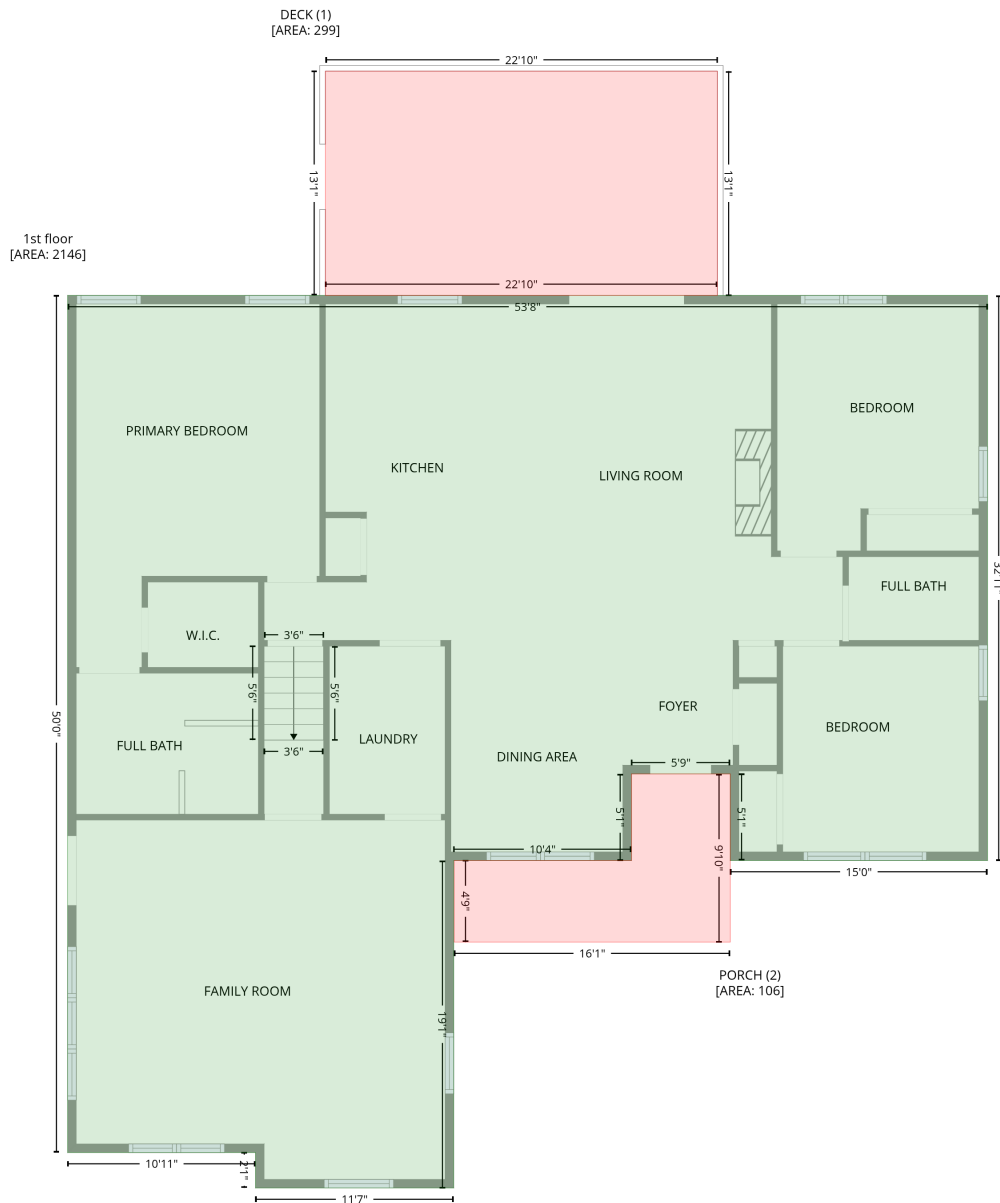


# 36 Poe Drive, Stones Mill, Kenbridge, Lunenburg County, Virginia, United States, 23944

Gross Living Area: 2408 sq. ft

## Level 1



Space	Area (sq. ft)	Calculation
1st floor (Living area)	2146	Coordinate Polygon Area Algorithm using inches $-((641.7 + 641.7) * (169.6 - 565) + (641.7 + 461.7) * (565 - 565) + (461.7 + 461.7) * (565 - 504.3) + (461.7 + 392.5) * (504.3 - 504.3) + (392.5 + 392.5) * (504.3 - 565) + (392.5 + 268.1) * (565 - 565) + (268.1 + 268.1) * (565 - 794.1) + (268.1 + 129.4) * (794.1 - 794.1) + (129.4 + 129.4) * (794.1 - 769.3) + (129.4 + -2.1) * (769.3 - 769.3) + (-2.1 + -2.1) * (769.3 - 169.6) + (-2.1 + 641.7) * (169.6 - 169.6)) * 0.5 + 0.00694$
DECK (Non-living area)	299	$-((452.7 + 452.7) * (12.6 - 169.6) + (452.7 + 178.3) * (169.6 - 169.6) + (178.3 + 178.3) * (169.6 - 12.6) + (178.3 + 452.7) * (12.6 - 12.6)) * 0.5 + 0.00694$

# 36 Poe Drive, Stones Mill, Kenbridge, Lunenburg County, Virginia, United States, 23944

Gross Living Area: 2408 sq. ft

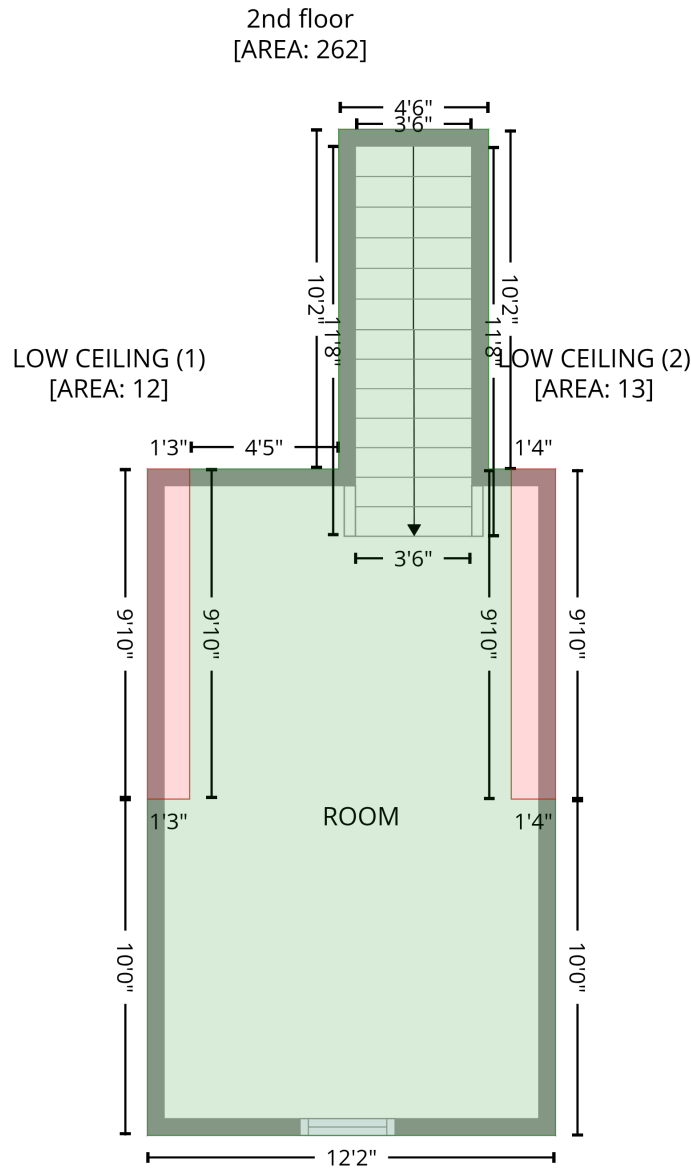
## Level 1

Space	Area (sq. ft)	Calculation <small>Coordinate Polygon Area Algorithm using inches</small>
PORCH (Non-living area)	106	$-((461.7 + 461.7) * (504.3 - 622.1) + (461.7 + 268.5) * (622.1 - 622.1) + (268.5 + 268.5) * (622.1 - 565) + (268.5 + 392.5) * (565 - 565) + (392.5 + 392.5) * (565 - 504.3) + (392.5 + 461.7) * (504.3 - 504.3)) * 0.5 * 0.00694$

# 36 Poe Drive, Stones Mill, Kenbridge, Lunenburg County, Virginia, United States, 23944

Gross Living Area: 2408 sq. ft

## Level 2



Space	Area (sq. ft)	Calculation <small>Coordinate Polygon Area Algorithm using inches</small>
2nd floor (Living area)	262	$-((183.1 + 183.1) * (409 - 530.6) + (183.1 + 191.2) * (530.6 - 530.6) + (191.2 + 191.2) * (530.6 - 648.8) + (191.2 + 207.1) * (648.8 - 648.8) + (207.1 + 207.1) * (648.8 - 769.3) + (207.1 + 60.9) * (769.3 - 769.3) + (60.9 + 60.9) * (769.3 - 648.8) + (60.9 + 76.1) * (648.8 - 648.8) + (76.1 + 76.1) * (648.8 - 530.6) + (76.1 + 129.4) * (530.6 - 530.6) + (129.4 + 129.4) * (530.6 - 409) + (129.4 + 183.1) * (409 - 409)) * 0.5 * 0.00694$
LOW CEILING (Non-living area)	12	$-((76.1 + 76.1) * (530.6 - 648.8) + (76.1 + 60.9) * (648.8 - 648.8) + (60.9 + 60.9) * (648.8 - 530.6) + (60.9 + 76.1) * (530.6 - 530.6)) * 0.5 * 0.00694$

# 36 Poe Drive, Stones Mill, Kenbridge, Lunenburg County, Virginia, United States, 23944

Gross Living Area: 2408 sq. ft

## Level 2

Space	Area (sq. ft)	Calculation <small>Coordinate Polygon Area Algorithm using inches</small>
LOW CEILING (Non-living area)	13	$-\left((207.1 + 207.1) * (530.6 - 648.8) + (207.1 + 191.2) * (648.8 - 648.8) + (191.2 + 191.2) * (648.8 - 530.6) + (191.2 + 207.1) * (530.6 - 530.6)\right) * 0.5 * 0.00694$