

Home data report

26403 North Farwell Road, Mettawa, Lake County, Illinois,
United States, 60045



Total Area: 4812 sq. ft

Basement 1: 836 sq. ft, 1st Floor: 2620 sq. ft, 2nd Floor: 1356 sq. ft

Excluded: Low ceiling 508 sq. ft, Basement 557 sq. ft, Undefined 6 sq. ft, Garage 899 sq. ft, Fireplace 32 sq. ft, Walls: 455 sq. ft

Property summary


 **3** Floors

 **4** Bedrooms

 **5** Bathrooms

Home data report

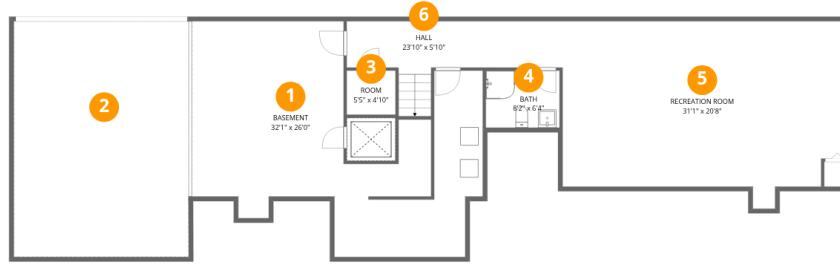
**26403 North Farwell Road, Mettawa, Lake County, Illinois,
United States, 60045**

 **1**
Half baths

 **1**
Garages

Home data report

26403 North Farwell Road, Mettawa, Lake County, Illinois,
United States, 60045



Room dimensions

Floor 1 Below grade

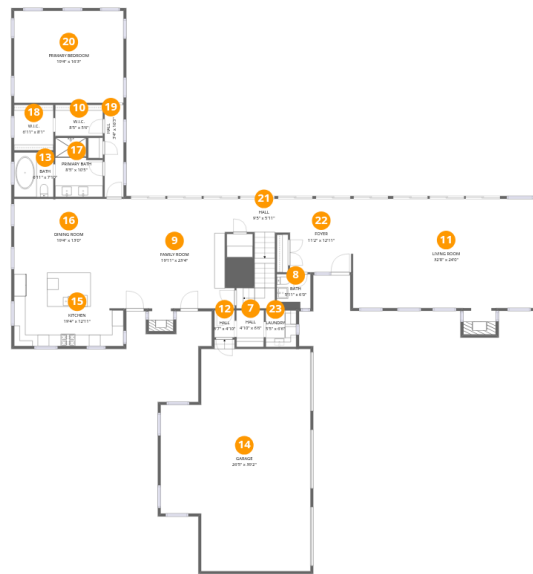
Total:836sqft

Excluded: 1071sqft

#		Dimensions	sqft	Counted as living area
1	Basement	32'1" x 26'0"	834 sq. ft	No
2	Crawl Space	19'4" x 26'0"	501 sq. ft	No
3	Room	5'5" x 4'10"	26 sq. ft	Yes
4	Bath	8'2" x 6'4"	51 sq. ft	Yes
5	Recreation Room	31'1" x 20'8"	642 sq. ft	Yes
6	Hall	23'10" x 5'10"	139 sq. ft	Yes

Home data report

26403 North Farwell Road, Mettawa, Lake County, Illinois,
United States, 60045



Room dimensions

Floor 2

Total:2620sqft

Excluded: 931sqft

#		Dimensions	sqft	Counted as living area
7	Hall	4'10" x 6'6"	31 sq. ft	Yes
8	Bath	5'11" x 6'0"	36 sq. ft	Yes
9	Family Room	19'11" x 23'4"	466 sq. ft	Yes
10	W.I.C.	8'5" x 5'6"	46 sq. ft	Yes
11	Living Room	32'8" x 24'0"	782 sq. ft	Yes
12	Hall	3'7" x 4'10"	17 sq. ft	Yes
13	Bath	6'11" x 7'10"	55 sq. ft	Yes
14	Garage	26'5" x 39'2"	1036 sq. ft	No
15	Kitchen	19'4" x 12'11"	250 sq. ft	Yes
16	Dining Room	19'4" x 13'0"	251 sq. ft	Yes
17	Primary Bath	8'5" x 10'5"	88 sq. ft	Yes

Home data report

**26403 North Farwell Road, Mettawa, Lake County, Illinois,
United States, 60045**

#		Dimensions	sqft	Counted as living area
18	W.I.C.	6'11" x 8'1"	56 sq. ft	Yes
19	Hall	3'4" x 16'3"	54 sq. ft	Yes
20	Primary Bedroom	19'4" x 16'3"	313 sq. ft	Yes
21	Hall	9'5" x 5'11"	56 sq. ft	Yes
22	Foyer	11'2" x 12'11"	144 sq. ft	Yes
23	Laundry	5'5" x 6'6"	35 sq. ft	Yes

Home data report

26403 North Farwell Road, Mettawa, Lake County, Illinois,
United States, 60045



Room dimensions

Floor 3

Total:1356sqft

Excluded: 0sqft

#		Dimensions	sqft	Counted as living area
24	Hall	3'4" x 3'9"	12 sq. ft	Yes
25	Hall	6'5" x 35'1"	224 sq. ft	Yes
26	Bedroom	12'11" x 18'7"	240 sq. ft	Yes
27	W.I.C.	2'8" x 3'9"	10 sq. ft	Yes
28	Bath	10'10" x 4'11"	53 sq. ft	Yes
29	Bath	5'11" x 11'5"	68 sq. ft	Yes
30	Bedroom	19'3" x 12'8"	245 sq. ft	Yes
31	Hall	6'1" x 6'6"	39 sq. ft	Yes
32	Bath	10'5" x 7'7"	79 sq. ft	Yes
33	Bedroom	19'3" x 12'10"	247 sq. ft	Yes

26403 North Farwell Road, Mettawa, Lake County, Illinois,
United States, 60045

1 Floor 1 - Basement



Dimensions: 32'1" x 26'0"
Area: 834 sq. ft
Counted as living area: No

Heated: Yes
Finished: No
Enclosed: Yes
Contiguous: Yes
Permitted: Yes
Wet space: No
Addition: No
Conversion: No

2 Floor 1 - Crawl Space



Dimensions: 19'4" x 26'0"
Area: 501 sq. ft
Counted as living area: No

Heated: No
Finished: No
Enclosed: No
Contiguous: Yes
Permitted: No
Wet space: No
Addition: No
Conversion: No

26403 North Farwell Road, Mettawa, Lake County, Illinois,
United States, 60045

3 Floor 1 - Room



Dimensions: 5'5" x 4'10"
Area: 26 sq. ft
Counted as living area: Yes

Heated: Yes
Finished: Yes
Enclosed: Yes
Contiguous: Yes
Permitted: Yes
Wet space: No
Addition: No
Conversion: No

4 Floor 1 - Bath



Dimensions: 8'2" x 6'4"
Area: 51 sq. ft
Counted as living area: Yes

Heated: Yes
Finished: Yes
Enclosed: Yes
Contiguous: Yes
Permitted: Yes
Wet space: Yes
Addition: No
Conversion: No

5 Floor 1 - Recreation Room



Dimensions: 31'1" x 20'8"
Area: 642 sq. ft
Counted as living area: Yes

Heated: Yes
Finished: Yes
Enclosed: Yes
Contiguous: Yes
Permitted: Yes
Wet space: No
Addition: No
Conversion: No

26403 North Farwell Road, Mettawa, Lake County, Illinois,
United States, 60045

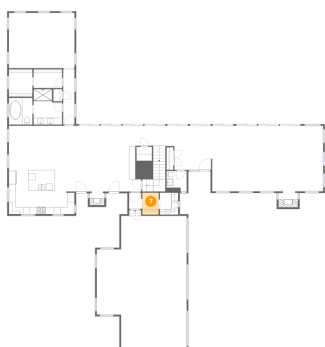
6 Floor 1 - Hall



Dimensions: 23'10" x 5'10"
Area: 139 sq. ft
Counted as living area: Yes

Heated: Yes
Finished: Yes
Enclosed: Yes
Contiguous: Yes
Permitted: Yes
Wet space: No
Addition: No
Conversion: No

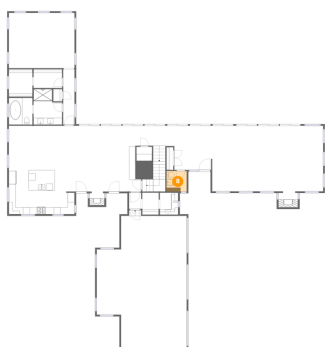
7 Floor 2 - Hall



Dimensions: 4'10" x 6'6"
Area: 31 sq. ft
Counted as living area: Yes

Heated: Yes
Finished: Yes
Enclosed: Yes
Contiguous: Yes
Permitted: Yes
Wet space: No
Addition: No
Conversion: No

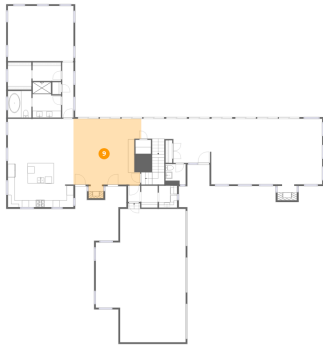
8 Floor 2 - Bath



Dimensions: 5'11" x 6'0"
Area: 36 sq. ft
Counted as living area: Yes

Heated: Yes
Finished: Yes
Enclosed: Yes
Contiguous: Yes
Permitted: Yes
Wet space: Yes
Addition: No
Conversion: No

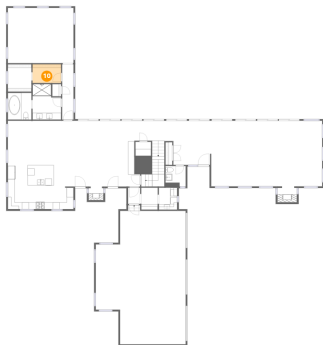
9 Floor 2 - Family Room



Dimensions: 19'11" x 23'4"
Area: 466 sq. ft
Counted as living area: Yes

Heated: Yes
Finished: Yes
Enclosed: Yes
Contiguous: Yes
Permitted: Yes
Wet space: No
Addition: No
Conversion: No

10 Floor 2 - W.I.C.



Dimensions: 8'5" x 5'6"
Area: 46 sq. ft
Counted as living area: Yes

Heated: Yes
Finished: Yes
Enclosed: Yes
Contiguous: Yes
Permitted: Yes
Wet space: No
Addition: No
Conversion: No

11 Floor 2 - Living Room

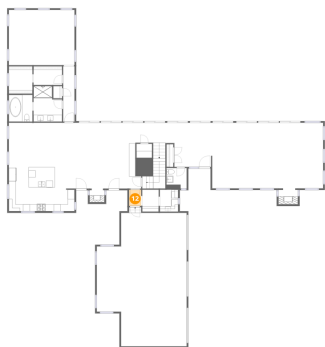


Dimensions: 32'8" x 24'0"
Area: 782 sq. ft
Counted as living area: Yes

Heated: Yes
Finished: Yes
Enclosed: Yes
Contiguous: Yes
Permitted: Yes
Wet space: No
Addition: No
Conversion: No

26403 North Farwell Road, Mettawa, Lake County, Illinois,
United States, 60045

12 Floor 2 - Hall



Dimensions: 3'7" x 4'10"
Area: 17 sq. ft
Counted as living area: Yes

Heated: Yes
Finished: Yes
Enclosed: Yes
Contiguous: Yes
Permitted: Yes
Wet space: No
Addition: No
Conversion: No

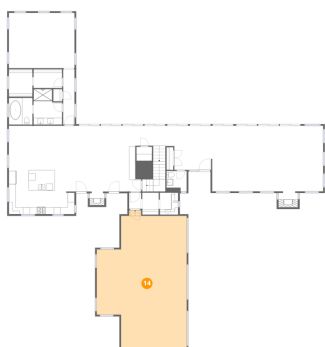
13 Floor 2 - Bath



Dimensions: 6'11" x 7'10"
Area: 55 sq. ft
Counted as living area: Yes

Heated: Yes
Finished: Yes
Enclosed: Yes
Contiguous: Yes
Permitted: Yes
Wet space: Yes
Addition: No
Conversion: No

14 Floor 2 - Garage

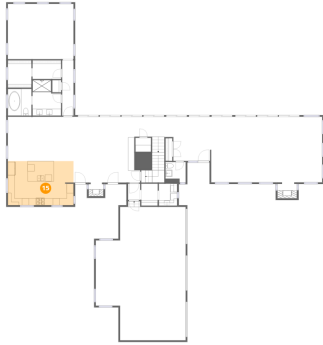


Dimensions: 26'5" x 39'2"
Area: 1036 sq. ft
Counted as living area: No

Heated: No
Finished: No
Enclosed: Yes
Contiguous: Yes
Permitted: Yes
Wet space: No
Addition: No
Conversion: No

26403 North Farwell Road, Mettawa, Lake County, Illinois,
United States, 60045

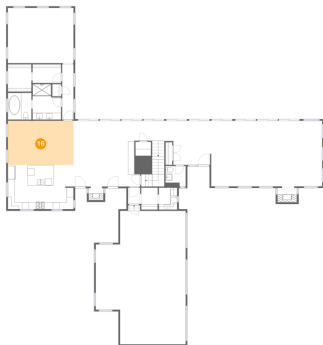
15 Floor 2 - Kitchen



Dimensions: 19'4" x 12'11"
Area: 250 sq. ft
Counted as living area: Yes

Heated: Yes
Finished: Yes
Enclosed: Yes
Contiguous: Yes
Permitted: Yes
Wet space: No
Addition: No
Conversion: No

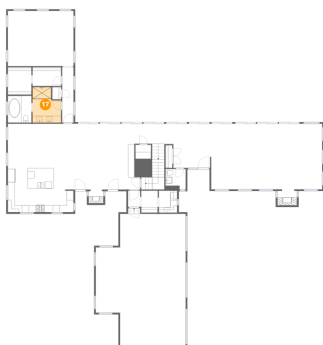
16 Floor 2 - Dining Room



Dimensions: 19'4" x 13'0"
Area: 251 sq. ft
Counted as living area: Yes

Heated: Yes
Finished: Yes
Enclosed: Yes
Contiguous: Yes
Permitted: Yes
Wet space: No
Addition: No
Conversion: No

17 Floor 2 - Primary Bath



Dimensions: 8'5" x 10'5"
Area: 88 sq. ft
Counted as living area: Yes

Heated: Yes
Finished: Yes
Enclosed: Yes
Contiguous: Yes
Permitted: Yes
Wet space: Yes
Addition: No
Conversion: No

18 Floor 2 - W.I.C.



Dimensions: 6'11" x 8'1"
Area: 56 sq. ft
Counted as living area: Yes

Heated: Yes
Finished: Yes
Enclosed: Yes
Contiguous: Yes
Permitted: Yes
Wet space: No
Addition: No
Conversion: No

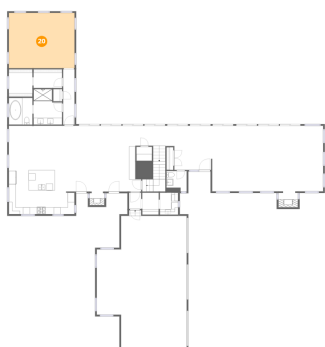
19 Floor 2 - Hall



Dimensions: 3'4" x 16'3"
Area: 54 sq. ft
Counted as living area: Yes

Heated: Yes
Finished: Yes
Enclosed: Yes
Contiguous: Yes
Permitted: Yes
Wet space: No
Addition: No
Conversion: No

20 Floor 2 - Primary Bedroom



Dimensions: 19'4" x 16'3"
Area: 313 sq. ft
Counted as living area: Yes

Heated: Yes
Finished: Yes
Enclosed: Yes
Contiguous: Yes
Permitted: Yes
Wet space: No
Addition: No
Conversion: No

21 Floor 2 - Hall



Dimensions: 9'5" x 5'11"
Area: 56 sq. ft
Counted as living area: Yes

Heated: Yes
Finished: Yes
Enclosed: Yes
Contiguous: Yes
Permitted: Yes
Wet space: No
Addition: No
Conversion: No

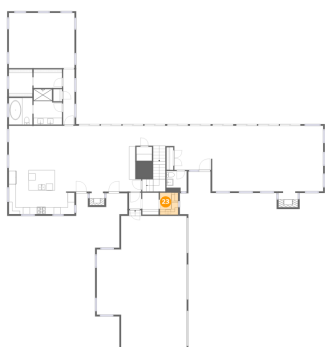
22 Floor 2 - Foyer



Dimensions: 11'2" x 12'11"
Area: 144 sq. ft
Counted as living area: Yes

Heated: Yes
Finished: Yes
Enclosed: Yes
Contiguous: Yes
Permitted: Yes
Wet space: No
Addition: No
Conversion: No

23 Floor 2 - Laundry



Dimensions: 5'5" x 6'6"
Area: 35 sq. ft
Counted as living area: Yes

Heated: Yes
Finished: Yes
Enclosed: Yes
Contiguous: Yes
Permitted: Yes
Wet space: No
Addition: No
Conversion: No

24 Floor 3 - Hall



Dimensions: 3'4" x 3'9"
Area: 12 sq. ft
Counted as living area: Yes

Heated: Yes
Finished: Yes
Enclosed: Yes
Contiguous: Yes
Permitted: Yes
Wet space: No
Addition: No
Conversion: No

25 Floor 3 - Hall



Dimensions: 6'5" x 35'1"
Area: 224 sq. ft
Counted as living area: Yes

Heated: Yes
Finished: Yes
Enclosed: Yes
Contiguous: Yes
Permitted: Yes
Wet space: No
Addition: No
Conversion: No

26 Floor 3 - Bedroom



Dimensions: 12'11" x 18'7"
Area: 240 sq. ft
Counted as living area: Yes

Heated: Yes
Finished: Yes
Enclosed: Yes
Contiguous: Yes
Permitted: Yes
Wet space: No
Addition: No
Conversion: No

26403 North Farwell Road, Mettawa, Lake County, Illinois,
United States, 60045

27 Floor 3 - W.I.C.



Dimensions: 2'8" x 3'9"
Area: 10 sq. ft
Counted as living area: Yes

Heated: Yes
Finished: Yes
Enclosed: Yes
Contiguous: Yes
Permitted: Yes
Wet space: No
Addition: No
Conversion: No

28 Floor 3 - Bath



Dimensions: 10'10" x 4'11"
Area: 53 sq. ft
Counted as living area: Yes

Heated: Yes
Finished: Yes
Enclosed: Yes
Contiguous: Yes
Permitted: Yes
Wet space: Yes
Addition: No
Conversion: No

29 Floor 3 - Bath



Dimensions: 5'11" x 11'5"
Area: 68 sq. ft
Counted as living area: Yes

Heated: Yes
Finished: Yes
Enclosed: Yes
Contiguous: Yes
Permitted: Yes
Wet space: Yes
Addition: No
Conversion: No

26403 North Farwell Road, Mettawa, Lake County, Illinois,
United States, 60045

30 Floor 3 - Bedroom



Dimensions: 19'3" x 12'8"
Area: 245 sq. ft
Counted as living area: Yes

Heated: Yes
Finished: Yes
Enclosed: Yes
Contiguous: Yes
Permitted: Yes
Wet space: No
Addition: No
Conversion: No

31 Floor 3 - Hall



Dimensions: 6'1" x 6'6"
Area: 39 sq. ft
Counted as living area: Yes

Heated: Yes
Finished: Yes
Enclosed: Yes
Contiguous: Yes
Permitted: Yes
Wet space: No
Addition: No
Conversion: No

32 Floor 3 - Bath



Dimensions: 10'5" x 7'7"
Area: 79 sq. ft
Counted as living area: Yes

Heated: Yes
Finished: Yes
Enclosed: Yes
Contiguous: Yes
Permitted: Yes
Wet space: Yes
Addition: No
Conversion: No

Home data report

26403 North Farwell Road, Mettawa, Lake County, Illinois,
United States, 60045

33 Floor 3 - Bedroom



Dimensions: 19'3" x 12'10"
Area: 247 sq. ft
Counted as living area: Yes

Heated: Yes
Finished: Yes
Enclosed: Yes
Contiguous: Yes
Permitted: Yes
Wet space: No
Addition: No
Conversion: No