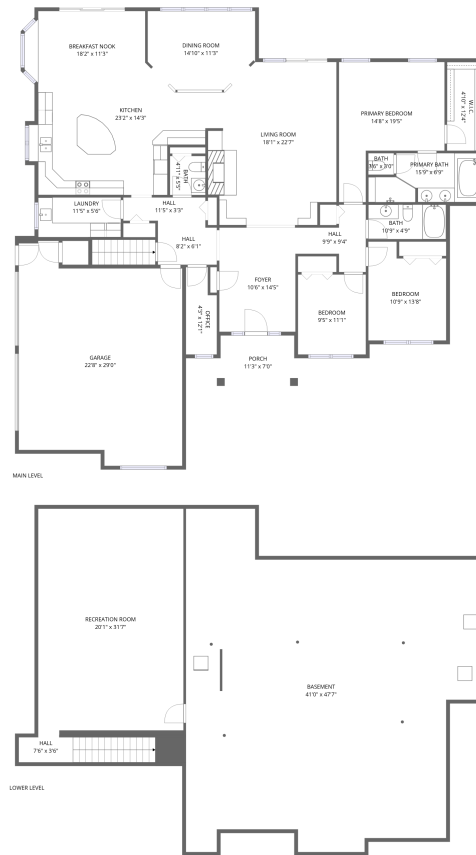


Home data report

315 Rocherty Road, North Cornwall Township, Lebanon,
Lebanon County, Pennsylvania, United States, 17042




Total Area: 3019 sq. ft

Basement: 728 sq. ft, 1st Floor: 2291 sq. ft

Excluded: Basement 1566 sq. ft, Porch 75 sq. ft, Garage 615 sq. ft, Walls: 268 sq. ft

Property summary

 **2** Floors

 **3** Bedrooms

 **2** Bathrooms

Home data report

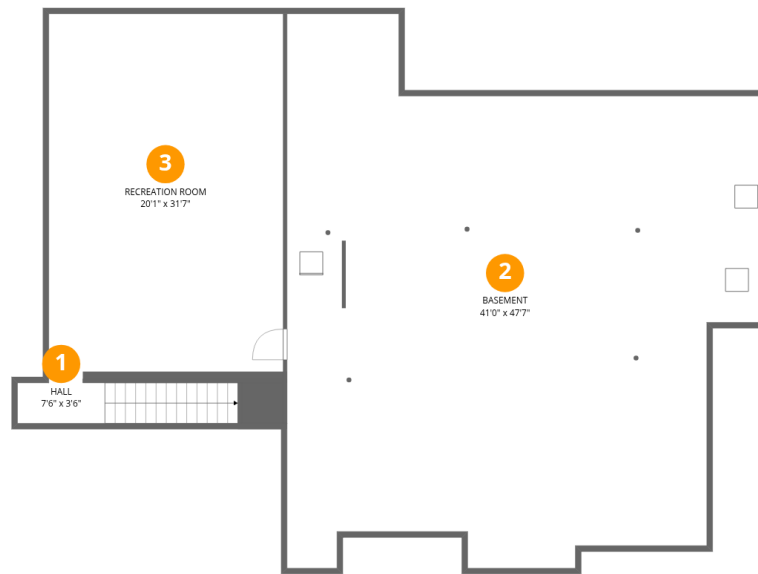
**315 Rocherty Road, North Cornwall Township, Lebanon,
Lebanon County, Pennsylvania, United States, 17042**

 **1**
Half baths

 **1**
Garages

Home data report

315 Rocherty Road, North Cornwall Township, Lebanon,
Lebanon County, Pennsylvania, United States, 17042



Room dimensions

Floor 1 Below grade

Total:728sqft

Excluded: 1566sqft

#		Dimensions	sqft	Counted as living area
1	Hall	7'6" x 3'6"	26 sq. ft	Yes
2	Basement	41'0" x 47'7"	1948 sq. ft	No
3	Recreation Room	20'1" x 31'7"	636 sq. ft	Yes

Home data report

315 Rocherty Road, North Cornwall Township, Lebanon,
Lebanon County, Pennsylvania, United States, 17042



Room dimensions

Floor 2

Total:2291sqft Excluded: 690sqft

#		Dimensions	sqft	Counted as living area
4	Bedroom	9'5" x 11'1"	104 sq. ft	Yes
5	Porch	11'3" x 7'0"	78 sq. ft	No
6	Breakfast Nook	18'2" x 11'3"	205 sq. ft	Yes
7	Office	4'3" x 12'1"	52 sq. ft	Yes
8	Bedroom	10'9" x 13'8"	148 sq. ft	Yes
9	Dining Room	14'10" x 11'3"	167 sq. ft	Yes
10	Bath	3'6" x 3'0"	11 sq. ft	Yes
11	Bath	4'11" x 5'5"	27 sq. ft	Yes
12	Garage	22'8" x 29'0"	656 sq. ft	No
13	Laundry	11'5" x 5'6"	63 sq. ft	Yes
14	Primary Bedroom	14'8" x 19'5"	284 sq. ft	Yes

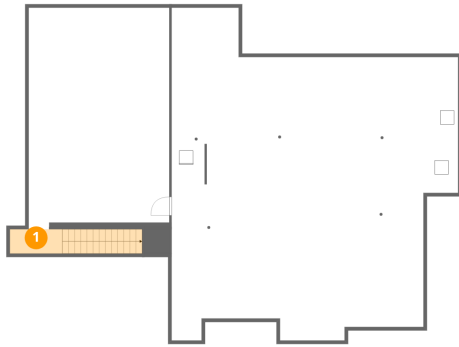
Home data report

**315 Rocherty Road, North Cornwall Township, Lebanon,
Lebanon County, Pennsylvania, United States, 17042**

#		Dimensions	sqft	Counted as living area
15	Kitchen	23'2" x 14'3"	329 sq. ft	Yes
16	Hall	9'9" x 9'4"	91 sq. ft	Yes
17	Foyer	10'6" x 14'5"	151 sq. ft	Yes
18	Primary Bath	15'9" x 6'9"	107 sq. ft	Yes
19	Hall	8'2" x 6'1"	50 sq. ft	Yes
20	Living Room	18'1" x 22'7"	408 sq. ft	Yes
21	Hall	11'5" x 3'3"	37 sq. ft	Yes
22	W.I.C.	4'10" x 12'4"	60 sq. ft	Yes
23	Bath	10'9" x 4'9"	52 sq. ft	Yes

315 Rocherty Road, North Cornwall Township, Lebanon,
Lebanon County, Pennsylvania, United States, 17042

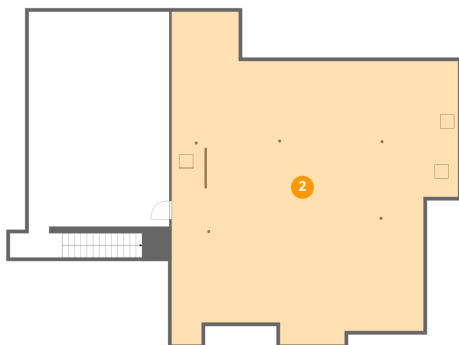
1 Floor 1 - Hall



Dimensions: 7'6" x 3'6"
Area: 26 sq. ft
Counted as living area: No

Heated: Yes
Finished: Yes
Enclosed: Yes
Contiguous: No
Permitted: Yes
Wet space: No
Addition: No
Conversion: No

2 Floor 1 - Basement

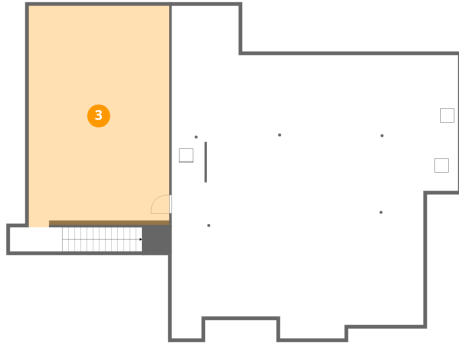


Dimensions: 41'0" x 47'7"
Area: 1948 sq. ft
Counted as living area: No

Heated: Yes
Finished: No
Enclosed: Yes
Contiguous: Yes
Permitted: Yes
Wet space: No
Addition: No
Conversion: No

315 Rocherty Road, North Cornwall Township, Lebanon,
Lebanon County, Pennsylvania, United States, 17042

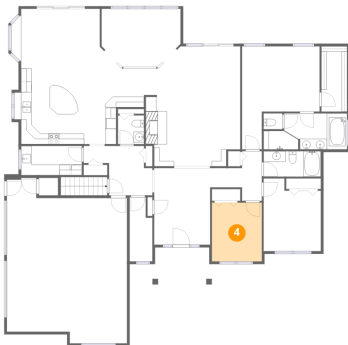
3 Floor 1 - Recreation Room



Dimensions: 20'1" x 31'7"
Area: 636 sq. ft
Counted as living area: No

Heated: Yes
Finished: Yes
Enclosed: Yes
Contiguous: No
Permitted: Yes
Wet space: No
Addition: No
Conversion: No

4 Floor 2 - Bedroom



Dimensions: 9'5" x 11'1"
Area: 104 sq. ft
Counted as living area: Yes

Heated: Yes
Finished: Yes
Enclosed: Yes
Contiguous: Yes
Permitted: Yes
Wet space: No
Addition: No
Conversion: No

5 Floor 2 - Porch



Dimensions: 11'3" x 7'0"
Area: 78 sq. ft
Counted as living area: No

Heated: No
Finished: No
Enclosed: No
Contiguous: Yes
Permitted: Yes
Wet space: No
Addition: No
Conversion: No

315 Rocherty Road, North Cornwall Township, Lebanon,
Lebanon County, Pennsylvania, United States, 17042

6 Floor 2 - Breakfast Nook



Dimensions: 18'2" x 11'3"
Area: 205 sq. ft
Counted as living area: Yes

Heated: Yes
Finished: Yes
Enclosed: Yes
Contiguous: Yes
Permitted: Yes
Wet space: No
Addition: No
Conversion: No

7 Floor 2 - Office



Dimensions: 4'3" x 12'1"
Area: 52 sq. ft
Counted as living area: Yes

Heated: Yes
Finished: Yes
Enclosed: Yes
Contiguous: Yes
Permitted: Yes
Wet space: No
Addition: No
Conversion: No

8 Floor 2 - Bedroom



Dimensions: 10'9" x 13'8"
Area: 148 sq. ft
Counted as living area: Yes

Heated: Yes
Finished: Yes
Enclosed: Yes
Contiguous: Yes
Permitted: Yes
Wet space: No
Addition: No
Conversion: No

315 Rocherty Road, North Cornwall Township, Lebanon,
Lebanon County, Pennsylvania, United States, 17042

9 Floor 2 - Dining Room



Dimensions: 14'10" x 11'3"
Area: 167 sq. ft
Counted as living area: Yes

Heated: Yes
Finished: Yes
Enclosed: Yes
Contiguous: Yes
Permitted: Yes
Wet space: No
Addition: No
Conversion: No

10 Floor 2 - Bath



Dimensions: 3'6" x 3'0"
Area: 11 sq. ft
Counted as living area: Yes

Heated: Yes
Finished: Yes
Enclosed: Yes
Contiguous: Yes
Permitted: Yes
Wet space: No
Addition: No
Conversion: No

11 Floor 2 - Bath



Dimensions: 4'11" x 5'5"
Area: 27 sq. ft
Counted as living area: Yes

Heated: Yes
Finished: Yes
Enclosed: Yes
Contiguous: Yes
Permitted: Yes
Wet space: Yes
Addition: No
Conversion: No

315 Rocherty Road, North Cornwall Township, Lebanon,
Lebanon County, Pennsylvania, United States, 17042

12 Floor 2 - Garage



Dimensions: 22'8" x 29'0"
Area: 656 sq. ft
Counted as living area: No

Heated: No
Finished: No
Enclosed: Yes
Contiguous: Yes
Permitted: Yes
Wet space: No
Addition: No
Conversion: No

13 Floor 2 - Laundry



Dimensions: 11'5" x 5'6"
Area: 63 sq. ft
Counted as living area: Yes

Heated: Yes
Finished: Yes
Enclosed: Yes
Contiguous: Yes
Permitted: Yes
Wet space: No
Addition: No
Conversion: No

14 Floor 2 - Primary Bedroom



Dimensions: 14'8" x 19'5"
Area: 284 sq. ft
Counted as living area: Yes

Heated: Yes
Finished: Yes
Enclosed: Yes
Contiguous: Yes
Permitted: Yes
Wet space: No
Addition: No
Conversion: No

315 Rocherty Road, North Cornwall Township, Lebanon,
Lebanon County, Pennsylvania, United States, 17042

15 Floor 2 - Kitchen



Dimensions: 23'2" x 14'3"
Area: 329 sq. ft
Counted as living area: Yes

Heated: Yes
Finished: Yes
Enclosed: Yes
Contiguous: Yes
Permitted: Yes
Wet space: No
Addition: No
Conversion: No

16 Floor 2 - Hall



Dimensions: 9'9" x 9'4"
Area: 91 sq. ft
Counted as living area: Yes

Heated: Yes
Finished: Yes
Enclosed: Yes
Contiguous: Yes
Permitted: Yes
Wet space: No
Addition: No
Conversion: No

17 Floor 2 - Foyer



Dimensions: 10'6" x 14'5"
Area: 151 sq. ft
Counted as living area: Yes

Heated: Yes
Finished: Yes
Enclosed: Yes
Contiguous: Yes
Permitted: Yes
Wet space: No
Addition: No
Conversion: No

315 Rocherty Road, North Cornwall Township, Lebanon,
Lebanon County, Pennsylvania, United States, 17042

18 Floor 2 - Primary Bath



Dimensions: 15'9" x 6'9"
Area: 107 sq. ft
Counted as living area: Yes

Heated: Yes
Finished: Yes
Enclosed: Yes
Contiguous: Yes
Permitted: Yes
Wet space: Yes
Addition: No
Conversion: No

19 Floor 2 - Hall



Dimensions: 8'2" x 6'1"
Area: 50 sq. ft
Counted as living area: Yes

Heated: Yes
Finished: Yes
Enclosed: Yes
Contiguous: Yes
Permitted: Yes
Wet space: No
Addition: No
Conversion: No

20 Floor 2 - Living Room



Dimensions: 18'1" x 22'7"
Area: 408 sq. ft
Counted as living area: Yes

Heated: Yes
Finished: Yes
Enclosed: Yes
Contiguous: Yes
Permitted: Yes
Wet space: No
Addition: No
Conversion: No

315 Rocherty Road, North Cornwall Township, Lebanon,
Lebanon County, Pennsylvania, United States, 17042

21 Floor 2 - Hall



Dimensions: 11'5" x 3'3"
Area: 37 sq. ft
Counted as living area: Yes

Heated: Yes
Finished: Yes
Enclosed: Yes
Contiguous: Yes
Permitted: Yes
Wet space: No
Addition: No
Conversion: No

22 Floor 2 - W.I.C.



Dimensions: 4'10" x 12'4"
Area: 60 sq. ft
Counted as living area: Yes

Heated: Yes
Finished: Yes
Enclosed: Yes
Contiguous: Yes
Permitted: Yes
Wet space: No
Addition: No
Conversion: No

23 Floor 2 - Bath



Dimensions: 10'9" x 4'9"
Area: 52 sq. ft
Counted as living area: Yes

Heated: Yes
Finished: Yes
Enclosed: Yes
Contiguous: Yes
Permitted: Yes
Wet space: Yes
Addition: No
Conversion: No