

Home data report

36 E A Joseph Drive, Norwell, Plymouth County, Massachusetts, United States, 02061



Total Area: 2442 sq. ft

Basement: 383 sq. ft, 1st Floor: 1170 sq. ft, 2nd Floor: 889 sq. ft, 3rd Floor: 0 sq. ft
Excluded: Garage 526 sq. ft, Utility 238 sq. ft, Deck 255 sq. ft, Fireplace 11 sq. ft, Low ceiling 532 sq. ft, Attic 357 sq. ft, Walls: 289 sq. ft

Property summary

 **4** Floors

 **4** Bedrooms

 **2** Bathrooms

Home data report

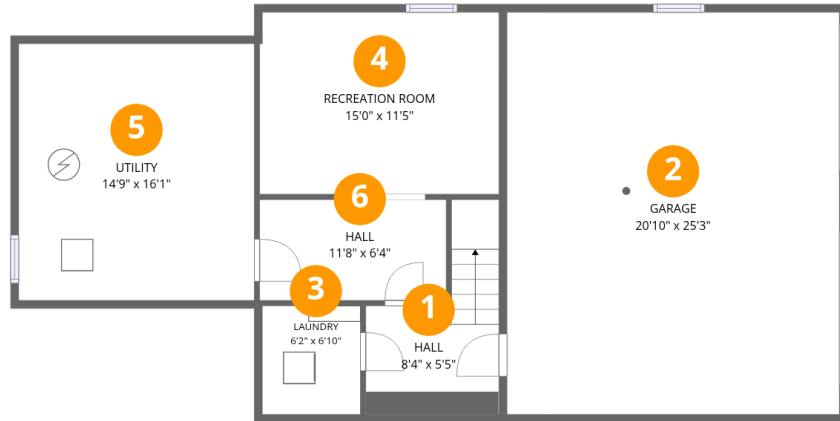
**36 E A Joseph Drive, Norwell, Plymouth County, Massachusetts,
United States, 02061**

 **1**
Half baths

 **1**
Garages

Home data report

36 E A Joseph Drive, Norwell, Plymouth County, Massachusetts, United States, 02061



Room dimensions

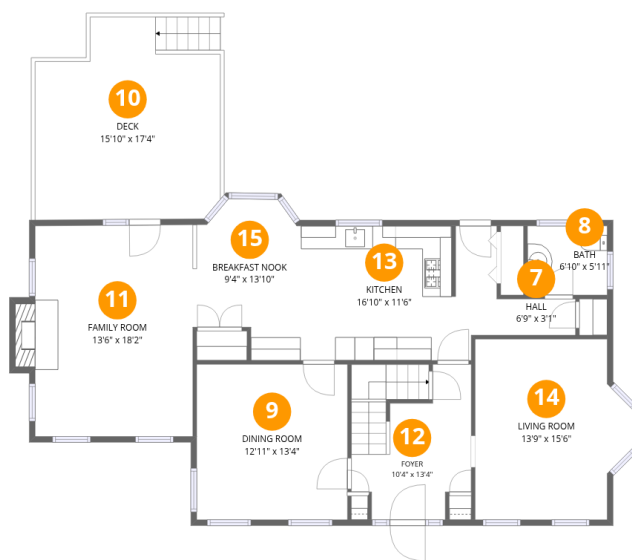
Floor 1 Below grade

Total:383sqft

Excluded: 764sqft

#		Dimensions	sqft	Counted as living area
1	Hall	8'4" x 5'5"	77 sq. ft	Yes
2	Garage	20'10" x 25'3"	526 sq. ft	No
3	Laundry	6'2" x 6'10"	42 sq. ft	Yes
4	Recreation Room	15'0" x 11'5"	171 sq. ft	Yes
5	Utility	14'9" x 16'1"	238 sq. ft	No
6	Hall	11'8" x 6'4"	74 sq. ft	Yes

36 E A Joseph Drive, Norwell, Plymouth County, Massachusetts, United States, 02061



Room dimensions

Floor 2

Total:1170sqft

Excluded: 266sqft

#		Dimensions	sqft	Counted as living area
7	Hall	6'9" x 3'1"	21 sq. ft	Yes
8	Bath	6'10" x 5'11"	41 sq. ft	Yes
9	Dining Room	12'11" x 13'4"	173 sq. ft	Yes
10	Deck	15'10" x 17'4"	255 sq. ft	No
11	Family Room	13'6" x 18'2"	255 sq. ft	Yes
12	Foyer	10'4" x 13'4"	125 sq. ft	Yes
13	Kitchen	16'10" x 11'6"	187 sq. ft	Yes
14	Living Room	13'9" x 15'6"	189 sq. ft	Yes
15	Breakfast Nook	9'4" x 13'10"	107 sq. ft	Yes

Home data report

36 E A Joseph Drive, Norwell, Plymouth County, Massachusetts, United States, 02061



Room dimensions

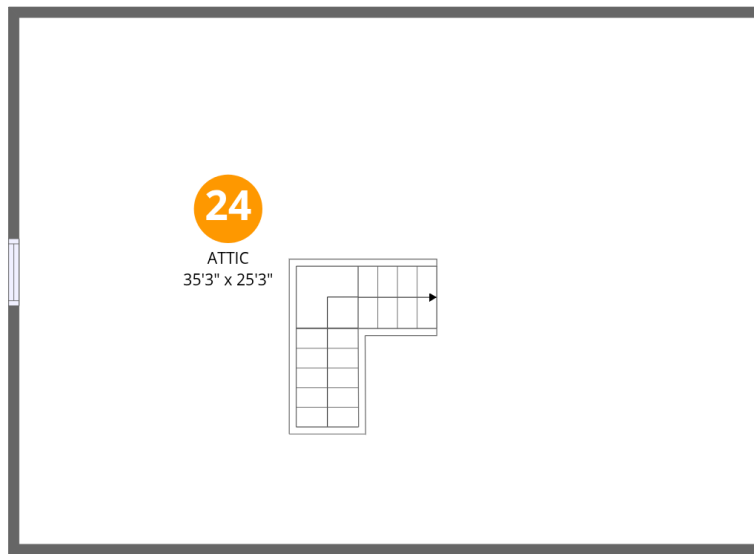
Floor 3

Total:889sqft Excluded: 0sqft

#		Dimensions	sqft	Counted as living area
16	Bath	8'7" x 7'5"	56 sq. ft	Yes
17	Bedroom	10'4" x 7'9"	71 sq. ft	Yes
18	Bath	7'7" x 7'5"	56 sq. ft	Yes
19	Bedroom	11'4" x 12'0"	116 sq. ft	Yes
20	Bedroom	11'1" x 12'10"	134 sq. ft	Yes
21	W.I.C.	5'0" x 7'5"	37 sq. ft	Yes
22	Hall	12'6" x 9'5"	109 sq. ft	Yes
23	Primary Bedroom	12'11" x 17'5"	226 sq. ft	Yes

Home data report

36 E A Joseph Drive, Norwell, Plymouth County, Massachusetts,
United States, 02061



Room dimensions

Floor 4

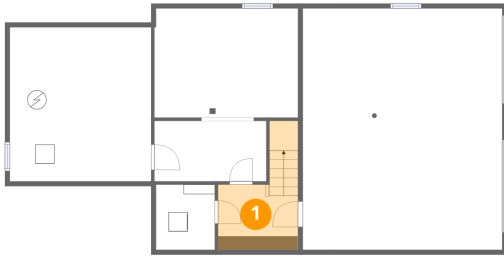
Total:0sqft

Excluded: 889sqft

#		Dimensions	sqft	Counted as living area
24	Attic	35'3" x 25'3"	357 sq. ft	No

36 E A Joseph Drive, Norwell, Plymouth County, Massachusetts,
United States, 02061

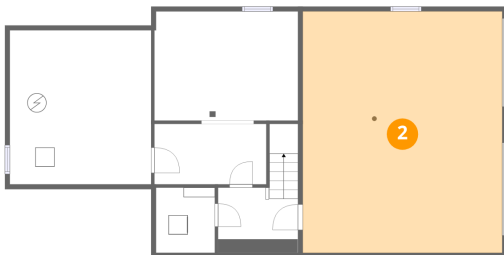
1 Floor 1 - Hall



Dimensions: 8'4" x 5'5"
Area: 77 sq. ft
Counted as living area: Yes

Heated: Yes
Finished: Yes
Enclosed: Yes
Contiguous: Yes
Permitted: Yes
Wet space: No
Addition: No
Conversion: No

2 Floor 1 - Garage

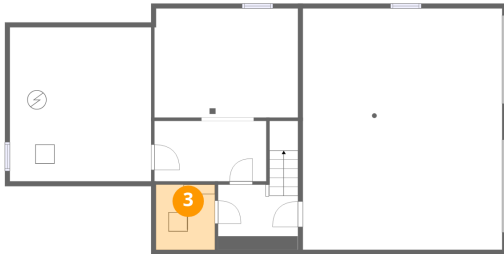


Dimensions: 20'10" x 25'3"
Area: 526 sq. ft
Counted as living area: No

Heated: No
Finished: No
Enclosed: Yes
Contiguous: Yes
Permitted: Yes
Wet space: No
Addition: No
Conversion: No

36 E A Joseph Drive, Norwell, Plymouth County, Massachusetts,
United States, 02061

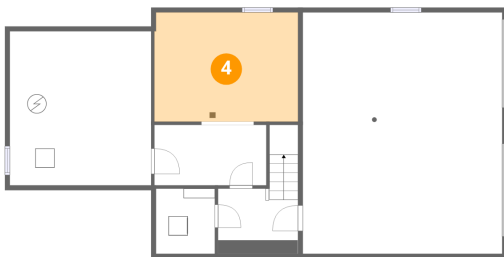
3 Floor 1 - Laundry



Dimensions: 6'2" x 6'10"
Area: 42 sq. ft
Counted as living area: Yes

Heated: Yes
Finished: Yes
Enclosed: Yes
Contiguous: Yes
Permitted: Yes
Wet space: No
Addition: No
Conversion: No

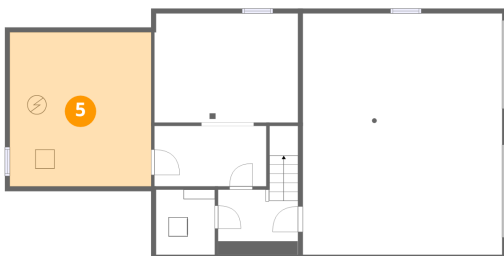
4 Floor 1 - Recreation Room



Dimensions: 15'0" x 11'5"
Area: 171 sq. ft
Counted as living area: Yes

Heated: Yes
Finished: Yes
Enclosed: Yes
Contiguous: Yes
Permitted: Yes
Wet space: No
Addition: No
Conversion: No

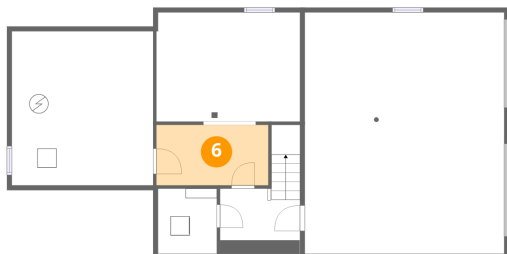
5 Floor 1 - Utility



Dimensions: 14'9" x 16'1"
Area: 238 sq. ft
Counted as living area: No

Heated: Yes
Finished: No
Enclosed: Yes
Contiguous: Yes
Permitted: Yes
Wet space: No
Addition: No
Conversion: No

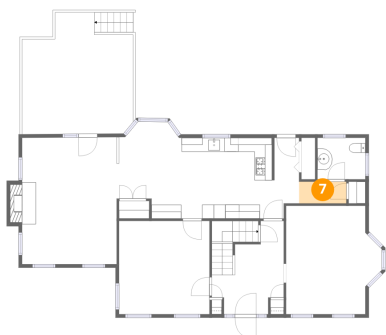
6 Floor 1 - Hall



Dimensions: 11'8" x 6'4"
Area: 74 sq. ft
Counted as living area: Yes

Heated: Yes
Finished: Yes
Enclosed: Yes
Contiguous: Yes
Permitted: Yes
Wet space: No
Addition: No
Conversion: No

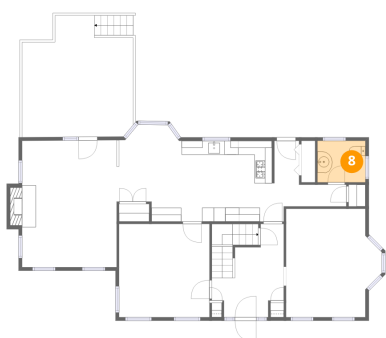
7 Floor 2 - Hall



Dimensions: 6'9" x 3'1"
Area: 21 sq. ft
Counted as living area: Yes

Heated: Yes
Finished: Yes
Enclosed: Yes
Contiguous: Yes
Permitted: Yes
Wet space: No
Addition: No
Conversion: No

8 Floor 2 - Bath

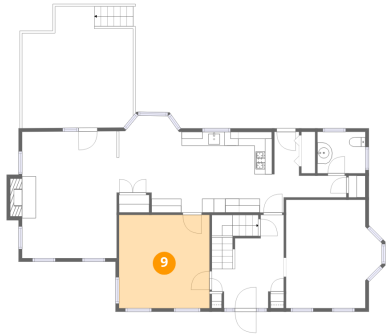


Dimensions: 6'10" x 5'11"
Area: 41 sq. ft
Counted as living area: Yes

Heated: Yes
Finished: Yes
Enclosed: Yes
Contiguous: Yes
Permitted: Yes
Wet space: Yes
Addition: No
Conversion: No

36 E A Joseph Drive, Norwell, Plymouth County, Massachusetts,
United States, 02061

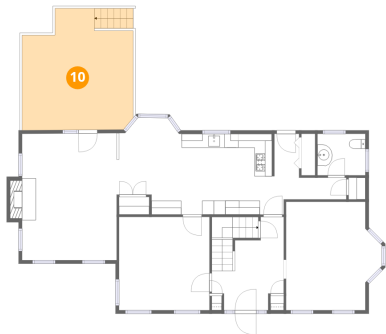
9 Floor 2 - Dining Room



Dimensions: 12'11" x 13'4"
Area: 173 sq. ft
Counted as living area: Yes

Heated: Yes
Finished: Yes
Enclosed: Yes
Contiguous: Yes
Permitted: Yes
Wet space: No
Addition: No
Conversion: No

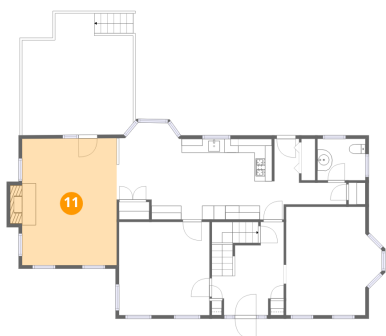
10 Floor 2 - Deck



Dimensions: 15'10" x 17'4"
Area: 255 sq. ft
Counted as living area: No

Heated: No
Finished: No
Enclosed: No
Contiguous: Yes
Permitted: Yes
Wet space: No
Addition: No
Conversion: No

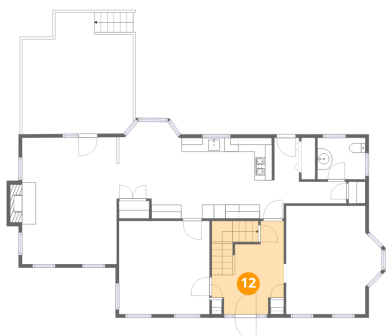
11 Floor 2 - Family Room



Dimensions: 13'6" x 18'2"
Area: 255 sq. ft
Counted as living area: Yes

Heated: Yes
Finished: Yes
Enclosed: Yes
Contiguous: Yes
Permitted: Yes
Wet space: No
Addition: No
Conversion: No

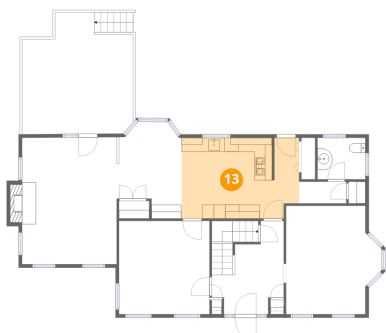
12 Floor 2 - Foyer



Dimensions: 10'4" x 13'4"
Area: 125 sq. ft
Counted as living area: Yes

Heated: Yes
Finished: Yes
Enclosed: Yes
Contiguous: Yes
Permitted: Yes
Wet space: No
Addition: No
Conversion: No

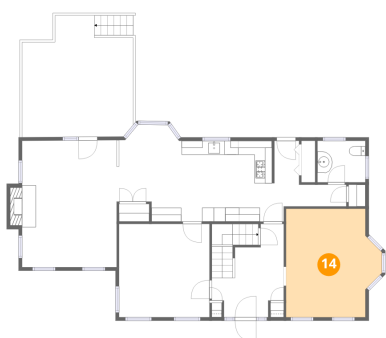
13 Floor 2 - Kitchen



Dimensions: 16'10" x 11'6"
Area: 187 sq. ft
Counted as living area: Yes

Heated: Yes
Finished: Yes
Enclosed: Yes
Contiguous: Yes
Permitted: Yes
Wet space: No
Addition: No
Conversion: No

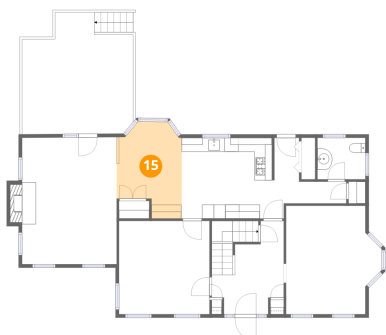
14 Floor 2 - Living Room



Dimensions: 13'9" x 15'6"
Area: 189 sq. ft
Counted as living area: Yes

Heated: Yes
Finished: Yes
Enclosed: Yes
Contiguous: Yes
Permitted: Yes
Wet space: No
Addition: No
Conversion: No

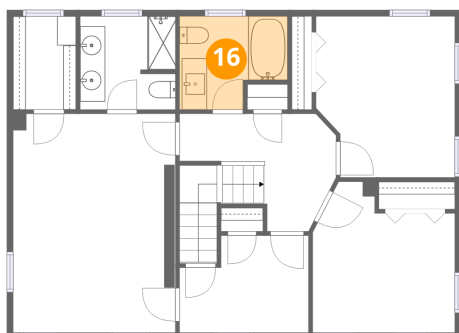
15 Floor 2 - Breakfast Nook



Dimensions: 9'4" x 13'10"
Area: 107 sq. ft
Counted as living area: Yes

Heated: Yes
Finished: Yes
Enclosed: Yes
Contiguous: Yes
Permitted: Yes
Wet space: No
Addition: No
Conversion: No

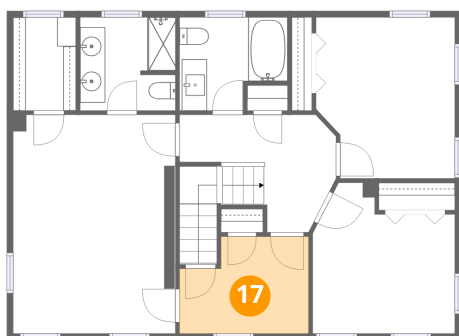
16 Floor 3 - Bath



Dimensions: 8'7" x 7'5"
Area: 56 sq. ft
Counted as living area: Yes

Heated: Yes
Finished: Yes
Enclosed: Yes
Contiguous: Yes
Permitted: Yes
Wet space: Yes
Addition: No
Conversion: No

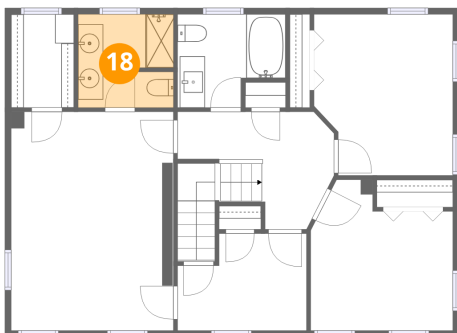
17 Floor 3 - Bedroom



Dimensions: 10'4" x 7'9"
Area: 71 sq. ft
Counted as living area: Yes

Heated: Yes
Finished: Yes
Enclosed: Yes
Contiguous: Yes
Permitted: Yes
Wet space: No
Addition: No
Conversion: No

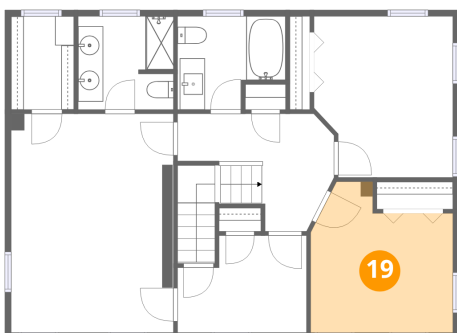
18 Floor 3 - Bath



Dimensions: 7'7" x 7'5"
Area: 56 sq. ft
Counted as living area: Yes

Heated: Yes
Finished: Yes
Enclosed: Yes
Contiguous: Yes
Permitted: Yes
Wet space: Yes
Addition: No
Conversion: No

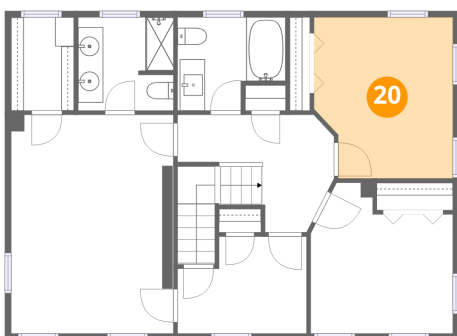
19 Floor 3 - Bedroom



Dimensions: 11'4" x 12'0"
Area: 116 sq. ft
Counted as living area: Yes

Heated: Yes
Finished: Yes
Enclosed: Yes
Contiguous: Yes
Permitted: Yes
Wet space: No
Addition: No
Conversion: No

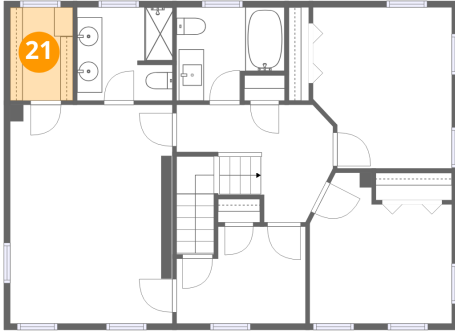
20 Floor 3 - Bedroom



Dimensions: 11'1" x 12'10"
Area: 134 sq. ft
Counted as living area: Yes

Heated: Yes
Finished: Yes
Enclosed: Yes
Contiguous: Yes
Permitted: Yes
Wet space: No
Addition: No
Conversion: No

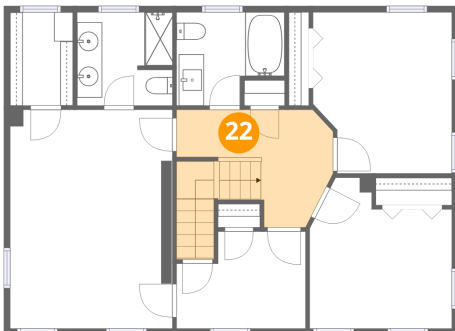
21 Floor 3 - W.I.C.



Dimensions: 5'0" x 7'5"
Area: 37 sq. ft
Counted as living area: Yes

Heated: Yes
Finished: Yes
Enclosed: Yes
Contiguous: Yes
Permitted: Yes
Wet space: No
Addition: No
Conversion: No

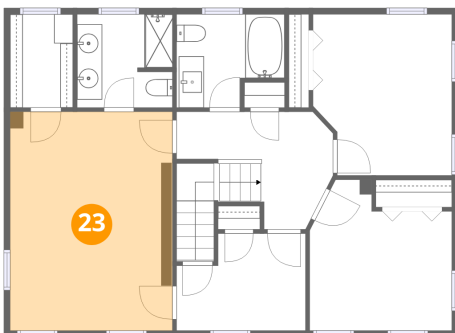
22 Floor 3 - Hall



Dimensions: 12'6" x 9'5"
Area: 109 sq. ft
Counted as living area: Yes

Heated: Yes
Finished: Yes
Enclosed: Yes
Contiguous: Yes
Permitted: Yes
Wet space: No
Addition: No
Conversion: No

23 Floor 3 - Primary Bedroom

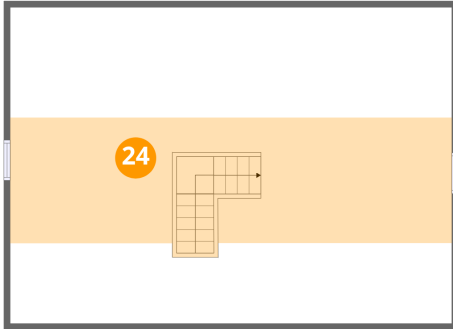


Dimensions: 12'11" x 17'5"
Area: 226 sq. ft
Counted as living area: Yes

Heated: Yes
Finished: Yes
Enclosed: Yes
Contiguous: Yes
Permitted: Yes
Wet space: No
Addition: No
Conversion: No

36 E A Joseph Drive, Norwell, Plymouth County, Massachusetts,
United States, 02061

24 Floor 4 - Attic



Dimensions: 35'3" x 25'3"
Area: 357 sq. ft
Counted as living area: No

Heated: No
Finished: No
Enclosed: Yes
Contiguous: Yes
Permitted: Yes
Wet space: No
Addition: No
Conversion: No