

Home data report

1804 Elmwood Ave, Wilmette, IL, US




Total Area: 2629 sq. ft

Basement: 30 sq. ft, 1st Floor: 1291 sq. ft, 2nd Floor: 1308 sq. ft

Excluded: Storage 36 sq. ft, Basement 1153 sq. ft, Deck 580 sq. ft, Porch 181 sq. ft, Fireplace 15 sq. ft, Walls: 271 sq. ft

Property summary

 **3** Floors

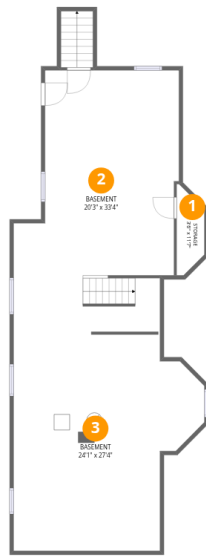
 **4** Bedrooms

 **2** Bathrooms

 **1** Half baths

Home data report

1804 Elmwood Ave, Wilmette, IL, US



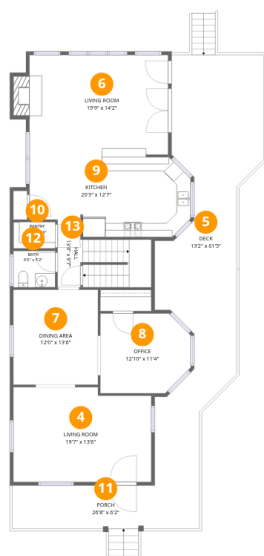
Room dimensions

Floor 1 Below grade

Total:30sqft

Excluded: 1189sqft

#		Dimensions	sqft	Counted as living area
1	Storage	3'6" x 11'7"	32 sq. ft	No
2	Basement	20'3" x 33'4"	593 sq. ft	No
3	Basement	24'1" x 27'4"	558 sq. ft	No



Room dimensions

Floor 2

Total:1291sqft Excluded: 776sqft

#		Dimensions	sqft	Counted as living area
4	Living Room	19'7" x 13'6"	255 sq. ft	Yes
5	Deck	13'2" x 61'5"	580 sq. ft	No
6	Living Room	19'9" x 14'2"	278 sq. ft	Yes
7	Dining Area	12'0" x 13'6"	163 sq. ft	Yes
8	Office	12'10" x 11'4"	134 sq. ft	Yes
9	Kitchen	20'3" x 12'7"	254 sq. ft	Yes
10	Pantry	6'0" x 3'9"	22 sq. ft	Yes
11	Porch	26'8" x 6'2"	181 sq. ft	No
12	Bath	6'0" x 5'2"	31 sq. ft	Yes
13	Hall	13'4" x 9'7"	96 sq. ft	Yes

Home data report

1804 Elmwood Ave, Wilmette, IL, US



Room dimensions

Floor 3

Total:1308sqft

Excluded: 0sqft

#		Dimensions	sqft	Counted as living area
14	W.I.C.	4'5" x 6'2"	27 sq. ft	Yes
15	Bedroom	8'8" x 12'3"	107 sq. ft	Yes
16	W.I.C.	4'5" x 7'0"	31 sq. ft	Yes
17	Laundry	6'0" x 9'3"	56 sq. ft	Yes
18	Bath	10'5" x 9'7"	81 sq. ft	Yes
19	Bedroom	10'7" x 13'6"	120 sq. ft	Yes
20	W.I.C.	5'2" x 4'4"	22 sq. ft	Yes
21	Bedroom	14'4" x 11'4"	151 sq. ft	Yes
22	Hall	14'2" x 20'8"	176 sq. ft	Yes
23	Primary Bedroom	15'4" x 25'11"	380 sq. ft	Yes
24	Bath	6'0" x 8'10"	53 sq. ft	Yes

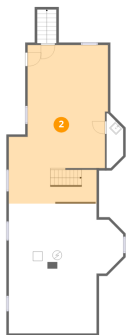
1 Floor 1 - Storage



Dimensions: 3'6" x 11'7"
Area: 32 sq. ft
Counted as living area: No

Heated: No
Finished: No
Enclosed: No
Contiguous: Yes
Permitted: Yes
Wet space: No
Addition: No
Conversion: No

2 Floor 1 - Basement



Dimensions: 20'3" x 33'4"
Area: 593 sq. ft
Counted as living area: No

Heated: Yes
Finished: No
Enclosed: Yes
Contiguous: Yes
Permitted: Yes
Wet space: No
Addition: No
Conversion: No

3 Floor 1 - Basement



Dimensions: 24'1" x 27'4"
Area: 558 sq. ft
Counted as living area: No

Heated: Yes
Finished: No
Enclosed: Yes
Contiguous: Yes
Permitted: Yes
Wet space: No
Addition: No
Conversion: No

4 Floor 2 - Living Room



Dimensions: 19'7" x 13'6"
Area: 255 sq. ft
Counted as living area: Yes

Heated: Yes
Finished: Yes
Enclosed: Yes
Contiguous: Yes
Permitted: Yes
Wet space: No
Addition: No
Conversion: No

5 Floor 2 - Deck



Dimensions: 13'2" x 61'5"
Area: 580 sq. ft
Counted as living area: No

Heated: No
Finished: No
Enclosed: No
Contiguous: Yes
Permitted: Yes
Wet space: No
Addition: No
Conversion: No

6 Floor 2 - Living Room



Dimensions: 19'9" x 14'2"
Area: 278 sq. ft
Counted as living area: Yes

Heated: Yes
Finished: Yes
Enclosed: Yes
Contiguous: Yes
Permitted: Yes
Wet space: No
Addition: No
Conversion: No

7 Floor 2 - Dining Area



Dimensions: 12'0" x 13'6"
Area: 163 sq. ft
Counted as living area: Yes

Heated: Yes
Finished: Yes
Enclosed: Yes
Contiguous: Yes
Permitted: Yes
Wet space: No
Addition: No
Conversion: No

8 Floor 2 - Office



Dimensions: 12'10" x 11'4"
Area: 134 sq. ft
Counted as living area: Yes

Heated: Yes
Finished: Yes
Enclosed: Yes
Contiguous: Yes
Permitted: Yes
Wet space: No
Addition: No
Conversion: No

9 Floor 2 - Kitchen



Dimensions: 20'3" x 12'7"
Area: 254 sq. ft
Counted as living area: Yes

Heated: Yes
Finished: Yes
Enclosed: Yes
Contiguous: Yes
Permitted: Yes
Wet space: No
Addition: No
Conversion: No

10 Floor 2 - Pantry



Dimensions: 6'0" x 3'9"
Area: 22 sq. ft
Counted as living area: Yes

Heated: Yes
Finished: Yes
Enclosed: Yes
Contiguous: Yes
Permitted: Yes
Wet space: No
Addition: No
Conversion: No

11 Floor 2 - Porch



Dimensions: 26'8" x 6'2"
Area: 181 sq. ft
Counted as living area: No

Heated: No
Finished: No
Enclosed: No
Contiguous: Yes
Permitted: Yes
Wet space: No
Addition: No
Conversion: No

12 Floor 2 - Bath



Dimensions: 6'0" x 5'2"
Area: 31 sq. ft
Counted as living area: Yes

Heated: Yes
Finished: Yes
Enclosed: Yes
Contiguous: Yes
Permitted: Yes
Wet space: Yes
Addition: No
Conversion: No

13 Floor 2 - Hall



Dimensions: 13'4" x 9'7"
Area: 96 sq. ft
Counted as living area: Yes

Heated: Yes
Finished: Yes
Enclosed: Yes
Contiguous: Yes
Permitted: Yes
Wet space: No
Addition: No
Conversion: No

14 Floor 3 - W.I.C.



Dimensions: 4'5" x 6'2"
Area: 27 sq. ft
Counted as living area: Yes

Heated: Yes
Finished: Yes
Enclosed: Yes
Contiguous: Yes
Permitted: Yes
Wet space: No
Addition: No
Conversion: No

15 Floor 3 - Bedroom



Dimensions: 8'8" x 12'3"
Area: 107 sq. ft
Counted as living area: Yes

Heated: Yes
Finished: Yes
Enclosed: Yes
Contiguous: Yes
Permitted: Yes
Wet space: No
Addition: No
Conversion: No

16 Floor 3 - W.I.C.



Dimensions: 4'5" x 7'0"
Area: 31 sq. ft
Counted as living area: Yes

Heated: Yes
Finished: Yes
Enclosed: Yes
Contiguous: Yes
Permitted: Yes
Wet space: No
Addition: No
Conversion: No

17 Floor 3 - Laundry



Dimensions: 6'0" x 9'3"
Area: 56 sq. ft
Counted as living area: Yes

Heated: Yes
Finished: Yes
Enclosed: Yes
Contiguous: Yes
Permitted: Yes
Wet space: No
Addition: No
Conversion: No

18 Floor 3 - Bath



Dimensions: 10'5" x 9'7"
Area: 81 sq. ft
Counted as living area: Yes

Heated: Yes
Finished: Yes
Enclosed: Yes
Contiguous: Yes
Permitted: Yes
Wet space: Yes
Addition: No
Conversion: No

19 Floor 3 - Bedroom



Dimensions: 10'7" x 13'6"
Area: 120 sq. ft
Counted as living area: Yes

Heated: Yes
Finished: Yes
Enclosed: Yes
Contiguous: Yes
Permitted: Yes
Wet space: No
Addition: No
Conversion: No

20 Floor 3 - W.I.C.



Dimensions: 5'2" x 4'4"
Area: 22 sq. ft
Counted as living area: Yes

Heated: Yes
Finished: Yes
Enclosed: Yes
Contiguous: Yes
Permitted: Yes
Wet space: No
Addition: No
Conversion: No

21 Floor 3 - Bedroom



Dimensions: 14'4" x 11'4"
Area: 151 sq. ft
Counted as living area: Yes

Heated: Yes
Finished: Yes
Enclosed: Yes
Contiguous: Yes
Permitted: Yes
Wet space: No
Addition: No
Conversion: No

22 Floor 3 - Hall



Dimensions: 14'2" x 20'8"
Area: 176 sq. ft
Counted as living area: Yes

Heated: Yes
Finished: Yes
Enclosed: Yes
Contiguous: Yes
Permitted: Yes
Wet space: No
Addition: No
Conversion: No

23 Floor 3 - Primary Bedroom



Dimensions: 15'4" x 25'11"
Area: 380 sq. ft
Counted as living area: Yes

Heated: Yes
Finished: Yes
Enclosed: Yes
Contiguous: Yes
Permitted: Yes
Wet space: No
Addition: No
Conversion: No

24 Floor 3 - Bath



Dimensions: 6'0" x 8'10"
Area: 53 sq. ft
Counted as living area: Yes

Heated: Yes
Finished: Yes
Enclosed: Yes
Contiguous: Yes
Permitted: Yes
Wet space: Yes
Addition: No
Conversion: No