

Home report

213 South 5th Street, Geneva, Kane County, Illinois, United States, 60134



Total Area: 2754 sq. ft

Below Ground: 531 sq. ft, Floor 2: 1124 sq. ft, Floor 3: 1099 sq. ft

Excluded: Utility 44 sq. ft, Storage 273 sq. ft, Walls: 216 sq. ft

Property summary

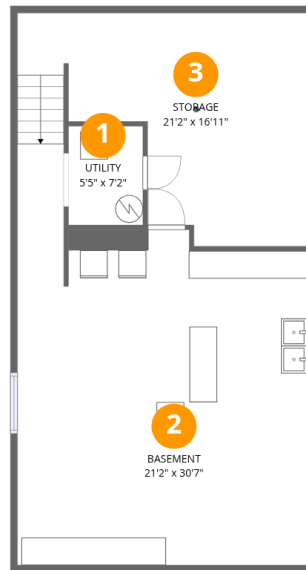
 **3** Floors

 **4** Bedrooms

 **3** Bathrooms

Home report

213 South 5th Street, Geneva, Kane County, Illinois, United States, 60134



Room dimensions

Floor 1 Below ground

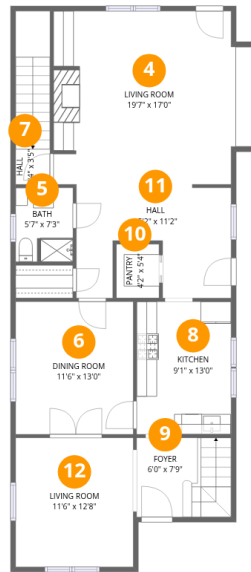
Total:531sqft

Excluded: 317sqft

#		Max Dimensions	sqft	Included
1	Utility	5'5" x 7'2"	39 sq. ft	No
2	Basement	21'2" x 30'7"	521 sq. ft	Yes
3	Storage	21'2" x 16'11"	271 sq. ft	No

Home report

213 South 5th Street, Geneva, Kane County, Illinois, United States, 60134



Room dimensions

Floor 2

Total:1124sqft

Excluded: 0sqft

#		Max Dimensions	sqft	Included
4	Living Room	19'7" x 17'0"	315 sq. ft	Yes
5	Bath	5'7" x 7'3"	40 sq. ft	Yes
6	Dining Room	11'6" x 13'0"	150 sq. ft	Yes
7	Hall	3'4" x 3'5"	57 sq. ft	Yes
8	Kitchen	9'1" x 13'0"	119 sq. ft	Yes
9	Foyer	6'0" x 7'9"	72 sq. ft	Yes
10	Pantry	4'2" x 5'4"	22 sq. ft	Yes
11	Hall	15'2" x 11'2"	142 sq. ft	Yes
12	Living Room	11'6" x 12'8"	146 sq. ft	Yes

Home report

213 South 5th Street, Geneva, Kane County, Illinois, United States, 60134



Room dimensions

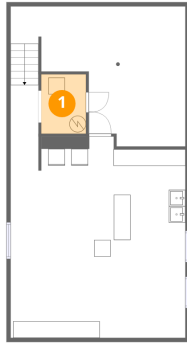
Floor 3

Total:1099sqft

Excluded: 0sqft

#		Max Dimensions	sqft	Included
13	Bedroom	11'6" x 11'4"	110 sq. ft	Yes
14	Bath	5'6" x 11'5"	55 sq. ft	Yes
15	Hall	9'3" x 12'3"	125 sq. ft	Yes
16	Hall	3'5" x 11'5"	39 sq. ft	Yes
17	Bedroom	13'10" x 12'8"	168 sq. ft	Yes
18	Laundry	5'11" x 4'8"	21 sq. ft	Yes
19	Bedroom	11'6" x 12'3"	108 sq. ft	Yes
20	Primary Bedroom	12'0" x 17'2"	207 sq. ft	Yes
21	Primary Bath	8'8" x 13'1"	113 sq. ft	Yes
22	W.I.C.	8'9" x 5'7"	49 sq. ft	Yes

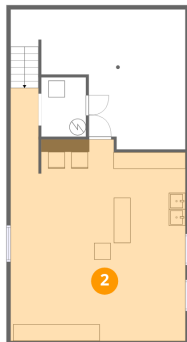
1 Floor 1 - Utility



Max Dimensions: 5'5" x 7'2"
Calculated Area: 39 sq. ft
Included: No

Heated: Yes
Finished: No
Enclosed: Yes
Contiguous: Yes
Permitted: Yes
Wet space: No
Addition: No
Conversion: No

2 Floor 1 - Basement

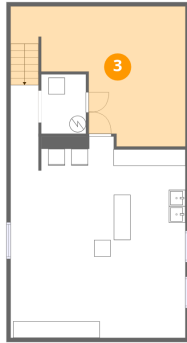


Max Dimensions: 21'2" x 30'7"
Calculated Area: 521 sq. ft
Included: No

Heated: Yes
Finished: Yes
Enclosed: Yes
Contiguous: No
Permitted: Yes
Wet space: No
Addition: No
Conversion: No

213 South 5th Street, Geneva, Kane County, Illinois, United States, 60134

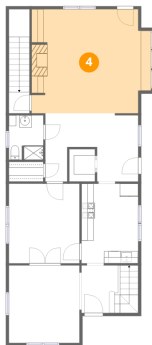
3 Floor 1 - Storage



Max Dimensions: 21'2" x 16'11"
Calculated Area: 271 sq. ft
Included: No

Heated: No
Finished: No
Enclosed: No
Contiguous: Yes
Permitted: Yes
Wet space: No
Addition: No
Conversion: No

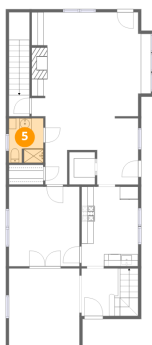
4 Floor 2 - Living Room



Max Dimensions: 19'7" x 17'0"
Calculated Area: 315 sq. ft
Included: Yes

Heated: Yes
Finished: Yes
Enclosed: Yes
Contiguous: Yes
Permitted: Yes
Wet space: No
Addition: No
Conversion: No

5 Floor 2 - Bath

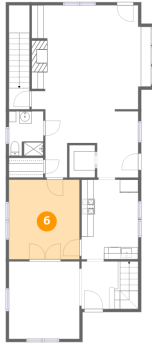


Max Dimensions: 5'7" x 7'3"
Calculated Area: 40 sq. ft
Included: Yes

Heated: Yes
Finished: Yes
Enclosed: Yes
Contiguous: Yes
Permitted: Yes
Wet space: Yes
Addition: No
Conversion: No

213 South 5th Street, Geneva, Kane County, Illinois, United States, 60134

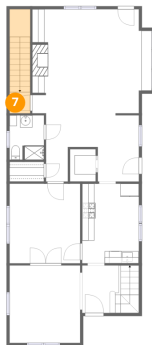
6 Floor 2 - Dining Room



Max Dimensions: 11'6" x 13'0"
Calculated Area: 150 sq. ft
Included: Yes

Heated: Yes
Finished: Yes
Enclosed: Yes
Contiguous: Yes
Permitted: Yes
Wet space: No
Addition: No
Conversion: No

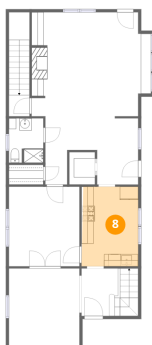
7 Floor 2 - Hall



Max Dimensions: 3'4" x 3'5"
Calculated Area: 57 sq. ft
Included: Yes

Heated: Yes
Finished: Yes
Enclosed: Yes
Contiguous: Yes
Permitted: Yes
Wet space: No
Addition: No
Conversion: No

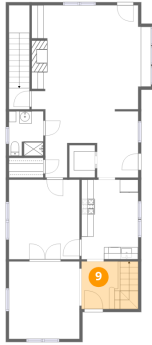
8 Floor 2 - Kitchen



Max Dimensions: 9'1" x 13'0"
Calculated Area: 119 sq. ft
Included: Yes

Heated: Yes
Finished: Yes
Enclosed: Yes
Contiguous: Yes
Permitted: Yes
Wet space: No
Addition: No
Conversion: No

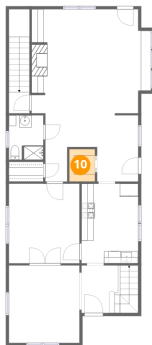
9 Floor 2 - Foyer



Max Dimensions: 6'0" x 7'9"
Calculated Area: 72 sq. ft
Included: Yes

Heated: Yes
Finished: Yes
Enclosed: Yes
Contiguous: Yes
Permitted: Yes
Wet space: No
Addition: No
Conversion: No

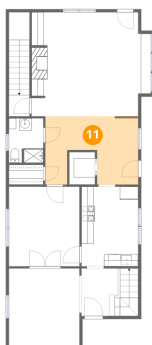
10 Floor 2 - Pantry



Max Dimensions: 4'2" x 5'4"
Calculated Area: 22 sq. ft
Included: Yes

Heated: Yes
Finished: Yes
Enclosed: Yes
Contiguous: Yes
Permitted: Yes
Wet space: No
Addition: No
Conversion: No

11 Floor 2 - Hall

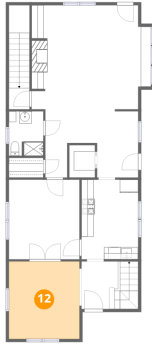


Max Dimensions: 15'2" x 11'2"
Calculated Area: 142 sq. ft
Included: Yes

Heated: Yes
Finished: Yes
Enclosed: Yes
Contiguous: Yes
Permitted: Yes
Wet space: No
Addition: No
Conversion: No

213 South 5th Street, Geneva, Kane County, Illinois, United States, 60134

12 Floor 2 - Living Room



Max Dimensions: 11'6" x 12'8"
Calculated Area: 146 sq. ft
Included: Yes

Heated: Yes
Finished: Yes
Enclosed: Yes
Contiguous: Yes
Permitted: Yes
Wet space: No
Addition: No
Conversion: No

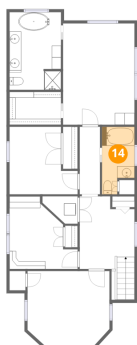
13 Floor 3 - Bedroom



Max Dimensions: 11'6" x 11'4"
Calculated Area: 110 sq. ft
Included: Yes

Heated: Yes
Finished: Yes
Enclosed: Yes
Contiguous: Yes
Permitted: Yes
Wet space: No
Addition: No
Conversion: No

14 Floor 3 - Bath



Max Dimensions: 5'6" x 11'5"
Calculated Area: 55 sq. ft
Included: Yes

Heated: Yes
Finished: Yes
Enclosed: Yes
Contiguous: Yes
Permitted: Yes
Wet space: Yes
Addition: No
Conversion: No

213 South 5th Street, Geneva, Kane County, Illinois, United States, 60134

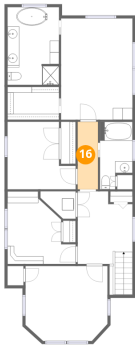
15 Floor 3 - Hall



Max Dimensions: 9'3" x 12'3"
Calculated Area: 125 sq. ft
Included: Yes

Heated: Yes
Finished: Yes
Enclosed: Yes
Contiguous: Yes
Permitted: Yes
Wet space: No
Addition: No
Conversion: No

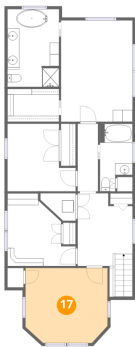
16 Floor 3 - Hall



Max Dimensions: 3'5" x 11'5"
Calculated Area: 39 sq. ft
Included: Yes

Heated: Yes
Finished: Yes
Enclosed: Yes
Contiguous: Yes
Permitted: Yes
Wet space: No
Addition: No
Conversion: No

17 Floor 3 - Bedroom



Max Dimensions: 13'10" x 12'8"
Calculated Area: 168 sq. ft
Included: Yes

Heated: Yes
Finished: Yes
Enclosed: Yes
Contiguous: Yes
Permitted: Yes
Wet space: No
Addition: No
Conversion: No

18 Floor 3 - Laundry



Max Dimensions: 5'11" x 4'8"
Calculated Area: 21 sq. ft
Included: Yes

Heated: Yes
Finished: Yes
Enclosed: Yes
Contiguous: Yes
Permitted: Yes
Wet space: No
Addition: No
Conversion: No

19 Floor 3 - Bedroom



Max Dimensions: 11'6" x 12'3"
Calculated Area: 108 sq. ft
Included: Yes

Heated: Yes
Finished: Yes
Enclosed: Yes
Contiguous: Yes
Permitted: Yes
Wet space: No
Addition: No
Conversion: No

20 Floor 3 - Primary Bedroom



Max Dimensions: 12'0" x 17'2"
Calculated Area: 207 sq. ft
Included: Yes

Heated: Yes
Finished: Yes
Enclosed: Yes
Contiguous: Yes
Permitted: Yes
Wet space: No
Addition: No
Conversion: No

213 South 5th Street, Geneva, Kane County, Illinois, United States, 60134

21 Floor 3 - Primary Bath



Max Dimensions: 8'8" x 13'1"
Calculated Area: 113 sq. ft
Included: Yes

Heated: Yes
Finished: Yes
Enclosed: Yes
Contiguous: Yes
Permitted: Yes
Wet space: Yes
Addition: No
Conversion: No

22 Floor 3 - W.I.C.



Max Dimensions: 8'9" x 5'7"
Calculated Area: 49 sq. ft
Included: Yes

Heated: Yes
Finished: Yes
Enclosed: Yes
Contiguous: Yes
Permitted: Yes
Wet space: No
Addition: No
Conversion: No