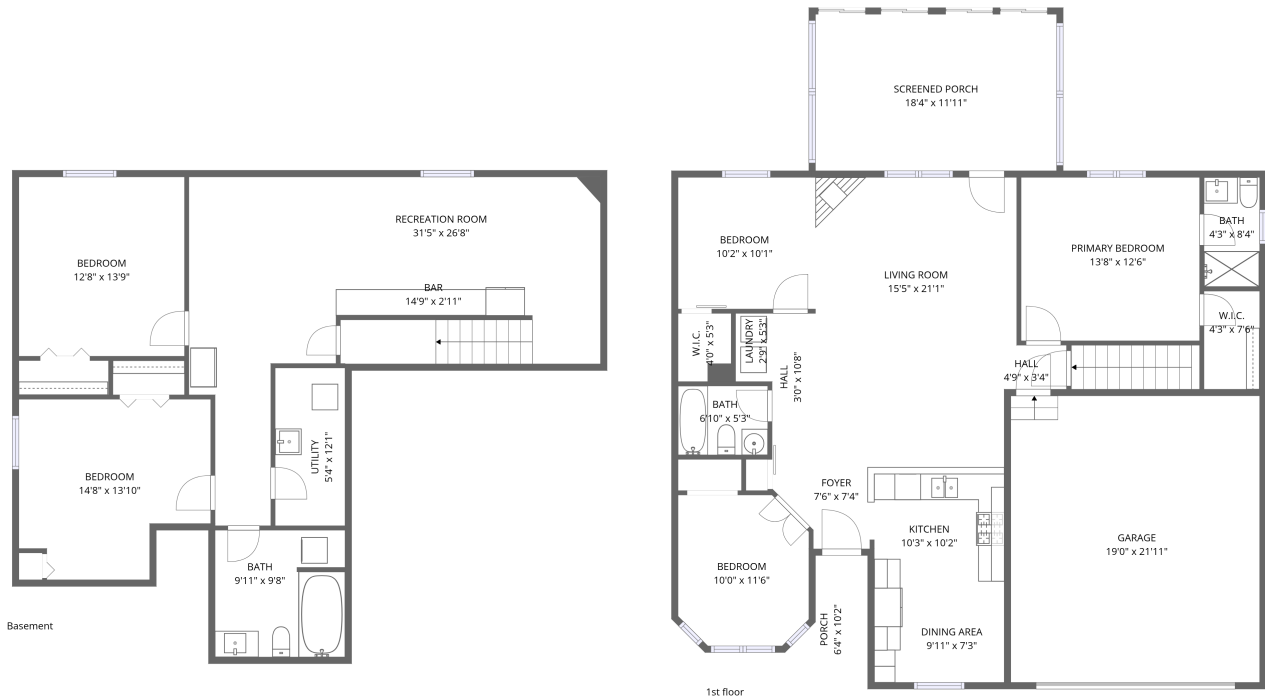


Home data report

6137 Polaris Dr, Fort Collins, CO, US



**Total Area: 2208 sq. ft**

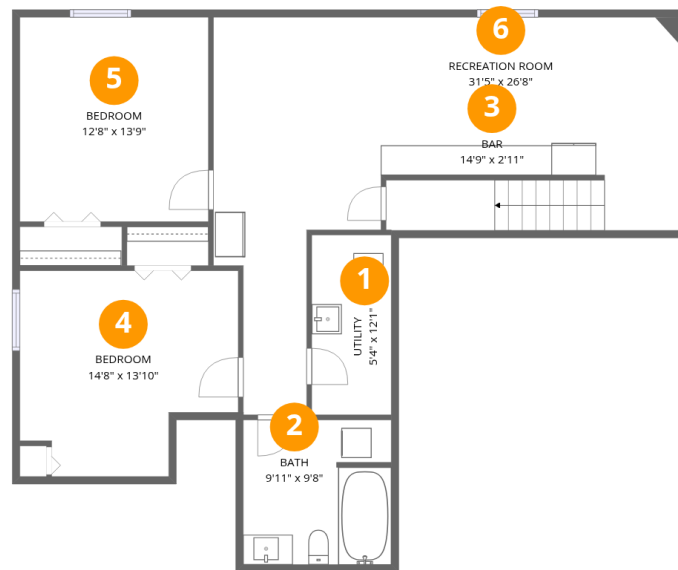
Basement: 1020 sq. ft, 1st Floor: 1188 sq. ft

Excluded: Utility 64 sq. ft, Garage 417 sq. ft, Screened porch 221 sq. ft, Porch 50 sq. ft,

Walls: 217 sq. ft

## Property summary





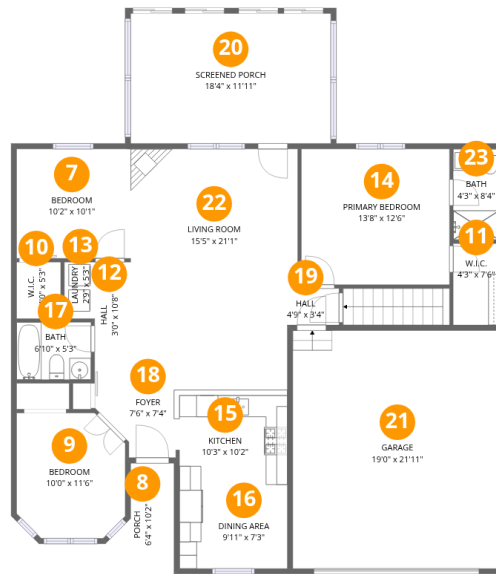
## Room dimensions

Floor 1 Below grade

Total: 1020 sqft

Excluded: 64 sqft

#		Dimensions	sqft	Counted as living area
1	Utility	5'4" x 12'1"	64 sq. ft	No
2	Bath	9'11" x 9'8"	95 sq. ft	Yes
3	Bar	14'9" x 2'11"	43 sq. ft	Yes
4	Bedroom	14'8" x 13'10"	177 sq. ft	Yes
5	Bedroom	12'8" x 13'9"	174 sq. ft	Yes
6	Recreation Room	31'5" x 26'8"	434 sq. ft	Yes



## Room dimensions

Floor 2

Total: 1188sqft Excluded: 688sqft

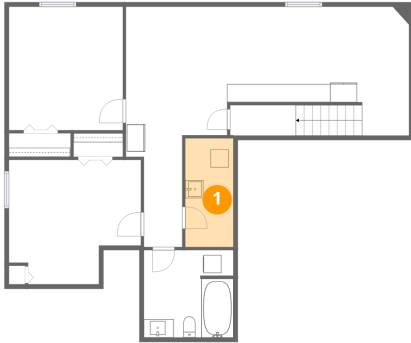
#		Dimensions	sqft	Counted as living area
7	Bedroom	10'2" x 10'1"	102 sq. ft	Yes
8	Porch	6'4" x 10'2"	50 sq. ft	No
9	Bedroom	10'0" x 11'6"	107 sq. ft	Yes
10	W.I.C.	4'0" x 5'3"	21 sq. ft	Yes
11	W.I.C.	4'3" x 7'6"	32 sq. ft	Yes
12	Hall	3'0" x 10'8"	32 sq. ft	Yes
13	Laundry	2'9" x 5'3"	15 sq. ft	Yes
14	Primary Bedroom	13'8" x 12'6"	170 sq. ft	Yes
15	Kitchen	10'3" x 10'2"	104 sq. ft	Yes
16	Dining Area	9'11" x 7'3"	73 sq. ft	Yes
17	Bath	6'10" x 5'3"	36 sq. ft	Yes

Home data report

**6137 Polaris Dr, Fort Collins, CO, US**

#		Dimensions	sqft	Counted as living area
18	Foyer	7'6" x 7'4"	45 sq. ft	Yes
19	Hall	4'9" x 3'4"	16 sq. ft	Yes
20	Screened Porch	18'4" x 11'11"	221 sq. ft	No
21	Garage	19'0" x 21'11"	417 sq. ft	No
22	Living Room	15'5" x 21'1"	316 sq. ft	Yes
23	Bath	4'3" x 8'4"	36 sq. ft	Yes

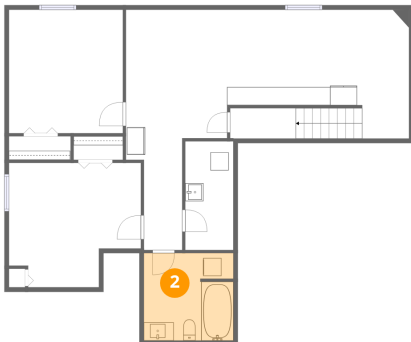
### 1 Floor 1 - Utility



Dimensions: 5'4" x 12'1"  
Area: 64 sq. ft  
Counted as living area: No

Heated: Yes  
Finished: No  
Enclosed: Yes  
Contiguous: Yes  
Permitted: Yes  
Wet space: No  
Addition: No  
Conversion: No

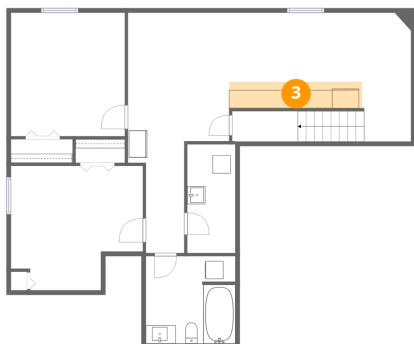
### 2 Floor 1 - Bath



Dimensions: 9'11" x 9'8"  
Area: 95 sq. ft  
Counted as living area: Yes

Heated: Yes  
Finished: Yes  
Enclosed: Yes  
Contiguous: Yes  
Permitted: Yes  
Wet space: Yes  
Addition: No  
Conversion: No

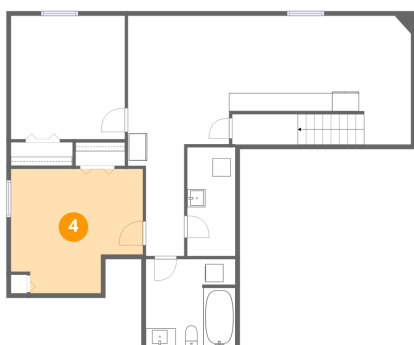
### 3 Floor 1 - Bar



Dimensions: 14'9" x 2'11"  
Area: 43 sq. ft  
Counted as living area: Yes

Heated: Yes  
Finished: Yes  
Enclosed: Yes  
Contiguous: Yes  
Permitted: Yes  
Wet space: No  
Addition: No  
Conversion: No

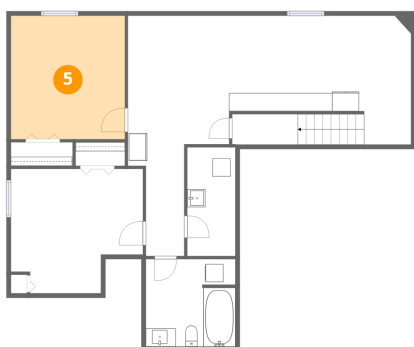
### 4 Floor 1 - Bedroom



Dimensions: 14'8" x 13'10"  
Area: 177 sq. ft  
Counted as living area: Yes

Heated: Yes  
Finished: Yes  
Enclosed: Yes  
Contiguous: Yes  
Permitted: Yes  
Wet space: No  
Addition: No  
Conversion: No

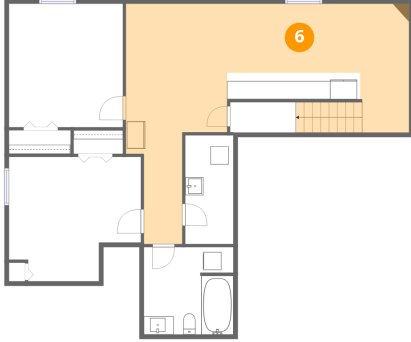
### 5 Floor 1 - Bedroom



Dimensions: 12'8" x 13'9"  
Area: 174 sq. ft  
Counted as living area: Yes

Heated: Yes  
Finished: Yes  
Enclosed: Yes  
Contiguous: Yes  
Permitted: Yes  
Wet space: No  
Addition: No  
Conversion: No

## 6 Floor 1 - Recreation Room



Dimensions: 31'5" x 26'8"  
Area: 434 sq. ft  
Counted as living area: Yes

Heated: Yes  
Finished: Yes  
Enclosed: Yes  
Contiguous: Yes  
Permitted: Yes  
Wet space: No  
Addition: No  
Conversion: No

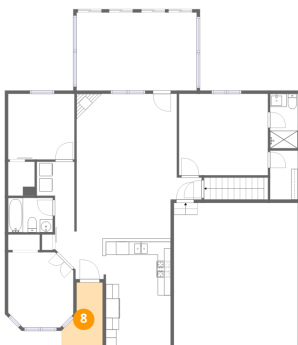
## 7 Floor 2 - Bedroom



Dimensions: 10'2" x 10'1"  
Area: 102 sq. ft  
Counted as living area: Yes

Heated: Yes  
Finished: Yes  
Enclosed: Yes  
Contiguous: Yes  
Permitted: Yes  
Wet space: No  
Addition: No  
Conversion: No

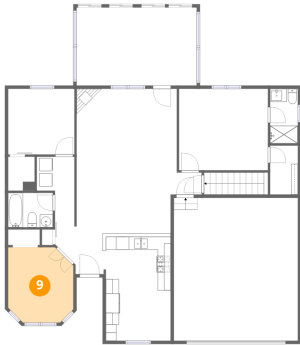
## 8 Floor 2 - Porch



Dimensions: 6'4" x 10'2"  
Area: 50 sq. ft  
Counted as living area: No

Heated: No  
Finished: No  
Enclosed: No  
Contiguous: Yes  
Permitted: Yes  
Wet space: No  
Addition: No  
Conversion: No

**9** Floor 2 - Bedroom



Dimensions: 10'0" x 11'6"  
Area: 107 sq. ft  
Counted as living area: Yes

Heated: Yes  
Finished: Yes  
Enclosed: Yes  
Contiguous: Yes  
Permitted: Yes  
Wet space: No  
Addition: No  
Conversion: No

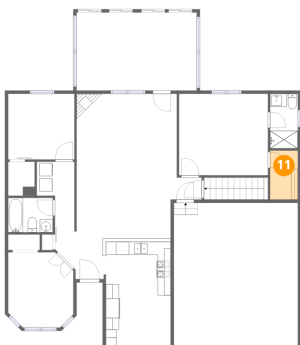
**10** Floor 2 - W.I.C.



Dimensions: 4'0" x 5'3"  
Area: 21 sq. ft  
Counted as living area: Yes

Heated: Yes  
Finished: Yes  
Enclosed: Yes  
Contiguous: Yes  
Permitted: Yes  
Wet space: No  
Addition: No  
Conversion: No

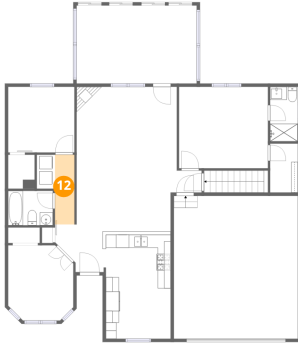
**11** Floor 2 - W.I.C.



Dimensions: 4'3" x 7'6"  
Area: 32 sq. ft  
Counted as living area: Yes

Heated: Yes  
Finished: Yes  
Enclosed: Yes  
Contiguous: Yes  
Permitted: Yes  
Wet space: No  
Addition: No  
Conversion: No

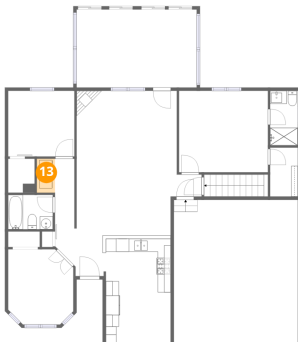
## 12 Floor 2 - Hall



Dimensions: 3'0" x 10'8"  
Area: 32 sq. ft  
Counted as living area: Yes

Heated: Yes  
Finished: Yes  
Enclosed: Yes  
Contiguous: Yes  
Permitted: Yes  
Wet space: No  
Addition: No  
Conversion: No

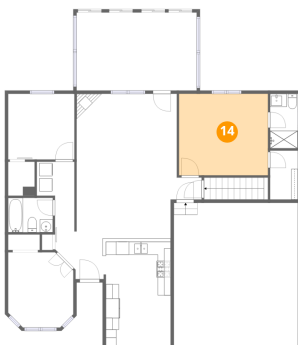
## 13 Floor 2 - Laundry



Dimensions: 2'9" x 5'3"  
Area: 15 sq. ft  
Counted as living area: Yes

Heated: Yes  
Finished: Yes  
Enclosed: Yes  
Contiguous: Yes  
Permitted: Yes  
Wet space: No  
Addition: No  
Conversion: No

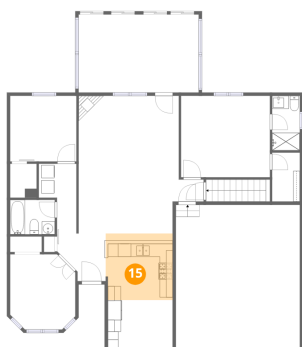
## 14 Floor 2 - Primary Bedroom



Dimensions: 13'8" x 12'6"  
Area: 170 sq. ft  
Counted as living area: Yes

Heated: Yes  
Finished: Yes  
Enclosed: Yes  
Contiguous: Yes  
Permitted: Yes  
Wet space: No  
Addition: No  
Conversion: No

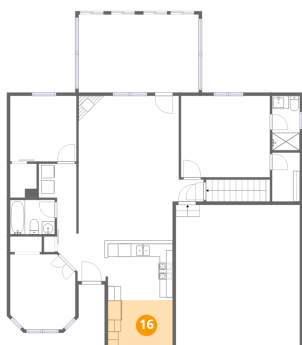
### 15 Floor 2 - Kitchen



Dimensions: 10'3" x 10'2"  
Area: 104 sq. ft  
Counted as living area: Yes

Heated: Yes  
Finished: Yes  
Enclosed: Yes  
Contiguous: Yes  
Permitted: Yes  
Wet space: No  
Addition: No  
Conversion: No

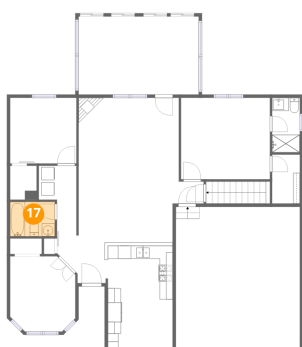
### 16 Floor 2 - Dining Area



Dimensions: 9'11" x 7'3"  
Area: 73 sq. ft  
Counted as living area: Yes

Heated: Yes  
Finished: Yes  
Enclosed: Yes  
Contiguous: Yes  
Permitted: Yes  
Wet space: No  
Addition: No  
Conversion: No

### 17 Floor 2 - Bath



Dimensions: 6'10" x 5'3"  
Area: 36 sq. ft  
Counted as living area: Yes

Heated: Yes  
Finished: Yes  
Enclosed: Yes  
Contiguous: Yes  
Permitted: Yes  
Wet space: Yes  
Addition: No  
Conversion: No

**18** Floor 2 - Foyer



Dimensions: 7'6" x 7'4"  
Area: 45 sq. ft  
Counted as living area: Yes

Heated: Yes  
Finished: Yes  
Enclosed: Yes  
Contiguous: Yes  
Permitted: Yes  
Wet space: No  
Addition: No  
Conversion: No

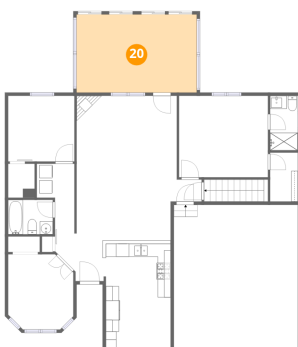
**19** Floor 2 - Hall



Dimensions: 4'9" x 3'4"  
Area: 16 sq. ft  
Counted as living area: Yes

Heated: Yes  
Finished: Yes  
Enclosed: Yes  
Contiguous: Yes  
Permitted: Yes  
Wet space: No  
Addition: No  
Conversion: No

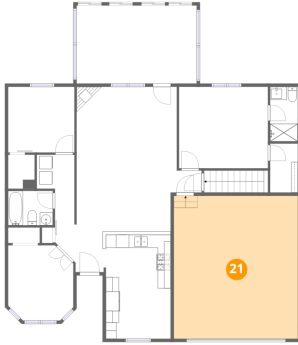
**20** Floor 2 - Screened Porch



Dimensions: 18'4" x 11'11"  
Area: 221 sq. ft  
Counted as living area: No

Heated: No  
Finished: No  
Enclosed: No  
Contiguous: Yes  
Permitted: Yes  
Wet space: No  
Addition: No  
Conversion: No

## 21 Floor 2 - Garage



Dimensions: 19'0" x 21'11"  
Area: 417 sq. ft  
Counted as living area: No

Heated: No  
Finished: No  
Enclosed: Yes  
Contiguous: Yes  
Permitted: Yes  
Wet space: No  
Addition: No  
Conversion: No

## 22 Floor 2 - Living Room



Dimensions: 15'5" x 21'1"  
Area: 316 sq. ft  
Counted as living area: Yes

Heated: Yes  
Finished: Yes  
Enclosed: Yes  
Contiguous: Yes  
Permitted: Yes  
Wet space: No  
Addition: No  
Conversion: No

## 23 Floor 2 - Bath



Dimensions: 4'3" x 8'4"  
Area: 36 sq. ft  
Counted as living area: Yes

Heated: Yes  
Finished: Yes  
Enclosed: Yes  
Contiguous: Yes  
Permitted: Yes  
Wet space: Yes  
Addition: No  
Conversion: No