

5446 S Rutherford Ave, Chicago, IL, US



Total Area: 2615 sq. ft

Basement: 570 sq. ft, 1st Floor: 675 sq. ft, 2nd Floor: 630 sq. ft, 3rd Floor: 740 sq. ft
Excluded: Undefined 8 sq. ft, Fireplace 11 sq. ft, Walls: 217 sq. ft

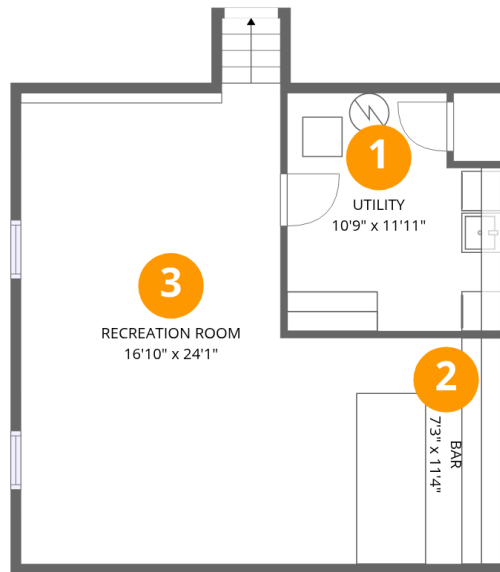
Property summary

 **4** Floors

 **4** Bedrooms

 **3** Bathrooms

5446 S Rutherford Ave, Chicago, IL, US



Room dimensions

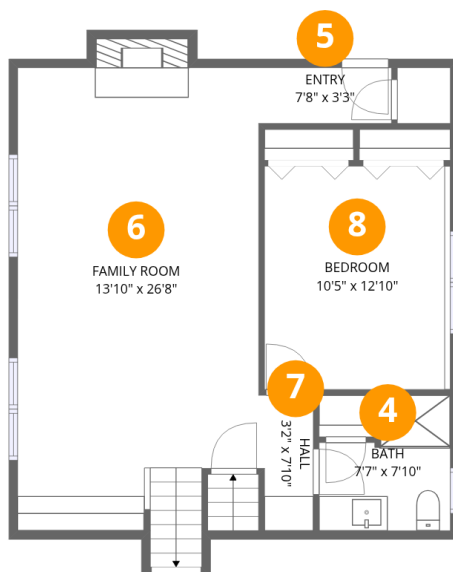
Floor 1 Below grade

Total:570sqft

Excluded: 8sqft

#		Dimensions	sqft	Counted as living area
1	Utility	10'9" x 11'11"	128 sq. ft	Yes
2	Bar	7'3" x 11'4"	82 sq. ft	Yes
3	Recreation Room	16'10" x 24'1"	405 sq. ft	Yes

5446 S Rutherford Ave, Chicago, IL, US



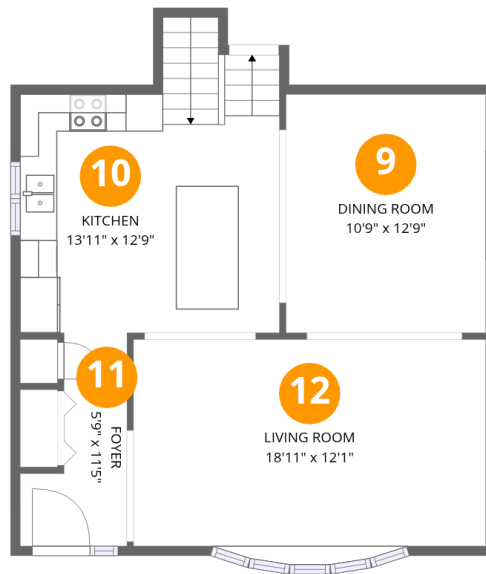
Room dimensions

Floor 2

Total: 675 sqft Excluded: 11 sqft

#		Dimensions	sqft	Counted as living area
4	Bath	7'7" x 7'10"	59 sq. ft	Yes
5	Entry	7'8" x 3'3"	25 sq. ft	Yes
6	Family Room	13'10" x 26'8"	370 sq. ft	Yes
7	Hall	3'2" x 7'10"	25 sq. ft	Yes
8	Bedroom	10'5" x 12'10"	133 sq. ft	Yes

5446 S Rutherford Ave, Chicago, IL, US



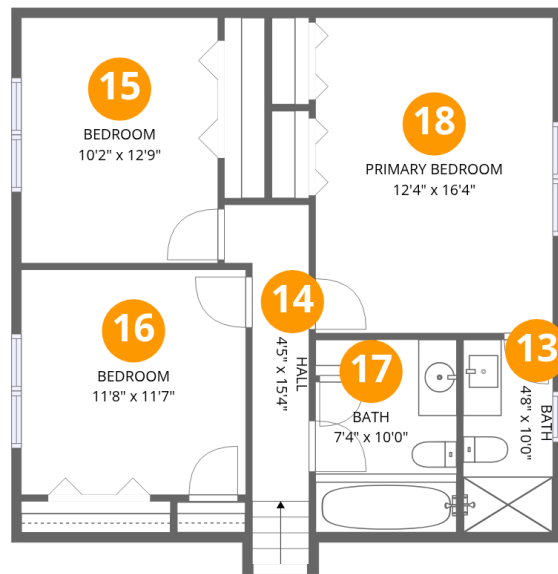
Room dimensions

Floor 3

Total:630sqft Excluded: 0sqft

#		Dimensions	sqft	Counted as living area
9	Dining Room	10'9" x 12'9"	137 sq. ft	Yes
10	Kitchen	13'11" x 12'9"	178 sq. ft	Yes
11	Foyer	5'9" x 11'5"	65 sq. ft	Yes
12	Living Room	18'11" x 12'1"	228 sq. ft	Yes

5446 S Rutherford Ave, Chicago, IL, US



Room dimensions

Floor 4

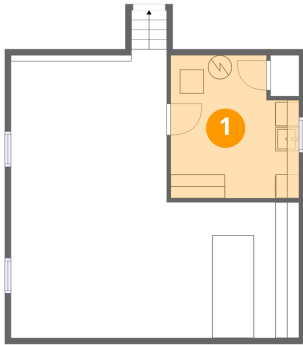
Total: 740 sqft

Excluded: 0 sqft

#		Dimensions	sqft	Counted as living area
13	Bath	4'8" x 10'0"	47 sq. ft	Yes
14	Hall	4'5" x 15'4"	67 sq. ft	Yes
15	Bedroom	10'2" x 12'9"	130 sq. ft	Yes
16	Bedroom	11'8" x 11'7"	135 sq. ft	Yes
17	Bath	7'4" x 10'0"	73 sq. ft	Yes
18	Primary Bedroom	12'4" x 16'4"	201 sq. ft	Yes

5446 S Rutherford Ave, Chicago, IL, US

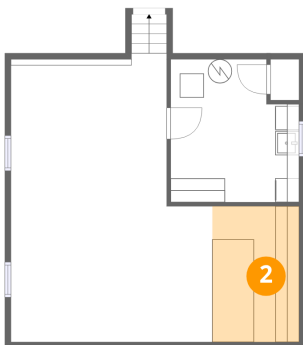
1 Floor 1 - Utility



Dimensions: 10'9" x 11'11"
Area: 128 sq. ft
Counted as living area: Yes

Heated: Yes
Finished: Yes
Enclosed: Yes
Contiguous: Yes
Permitted: Yes
Wet space: No
Addition: No
Conversion: No

2 Floor 1 - Bar

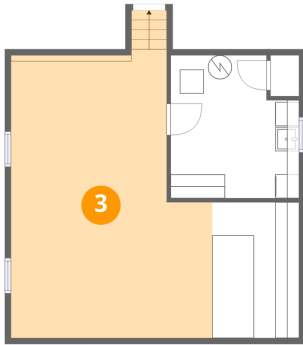


Dimensions: 7'3" x 11'4"
Area: 82 sq. ft
Counted as living area: Yes

Heated: Yes
Finished: Yes
Enclosed: Yes
Contiguous: Yes
Permitted: Yes
Wet space: No
Addition: No
Conversion: No

5446 S Rutherford Ave, Chicago, IL, US

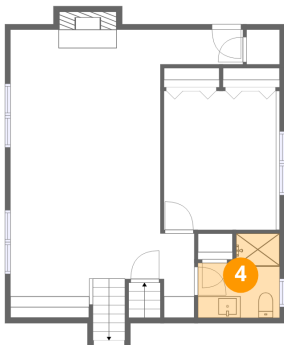
3 Floor 1 - Recreation Room



Dimensions: 16'10" x 24'1"
Area: 405 sq. ft
Counted as living area: Yes

Heated: Yes
Finished: Yes
Enclosed: Yes
Contiguous: Yes
Permitted: Yes
Wet space: No
Addition: No
Conversion: No

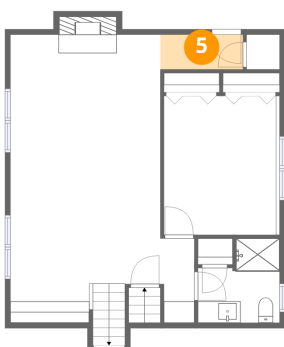
4 Floor 2 - Bath



Dimensions: 7'7" x 7'10"
Area: 59 sq. ft
Counted as living area: Yes

Heated: Yes
Finished: Yes
Enclosed: Yes
Contiguous: Yes
Permitted: Yes
Wet space: Yes
Addition: No
Conversion: No

5 Floor 2 - Entry

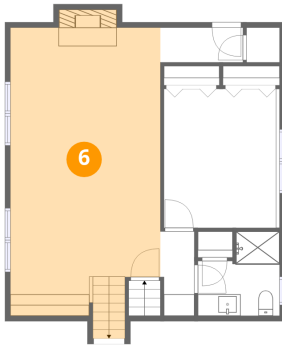


Dimensions: 7'8" x 3'3"
Area: 25 sq. ft
Counted as living area: Yes

Heated: Yes
Finished: Yes
Enclosed: Yes
Contiguous: Yes
Permitted: Yes
Wet space: No
Addition: No
Conversion: No

5446 S Rutherford Ave, Chicago, IL, US

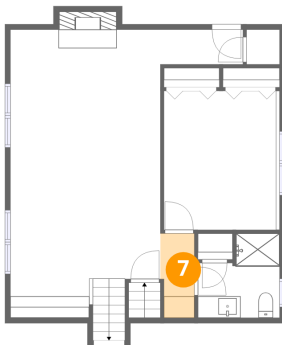
6 Floor 2 - Family Room



Dimensions: 13'10" x 26'8"
Area: 370 sq. ft
Counted as living area: Yes

Heated: Yes
Finished: Yes
Enclosed: Yes
Contiguous: Yes
Permitted: Yes
Wet space: No
Addition: No
Conversion: No

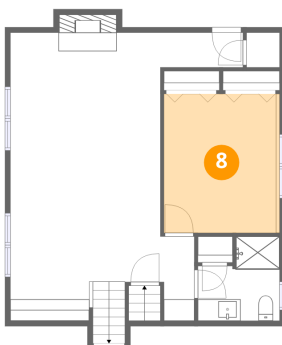
7 Floor 2 - Hall



Dimensions: 3'2" x 7'10"
Area: 25 sq. ft
Counted as living area: Yes

Heated: Yes
Finished: Yes
Enclosed: Yes
Contiguous: Yes
Permitted: Yes
Wet space: No
Addition: No
Conversion: No

8 Floor 2 - Bedroom



Dimensions: 10'5" x 12'10"
Area: 133 sq. ft
Counted as living area: Yes

Heated: Yes
Finished: Yes
Enclosed: Yes
Contiguous: Yes
Permitted: Yes
Wet space: No
Addition: No
Conversion: No

5446 S Rutherford Ave, Chicago, IL, US

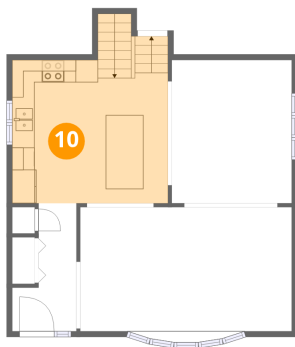
9 Floor 3 - Dining Room



Dimensions: 10'9" x 12'9"
Area: 137 sq. ft
Counted as living area: Yes

Heated: Yes
Finished: Yes
Enclosed: Yes
Contiguous: Yes
Permitted: Yes
Wet space: No
Addition: No
Conversion: No

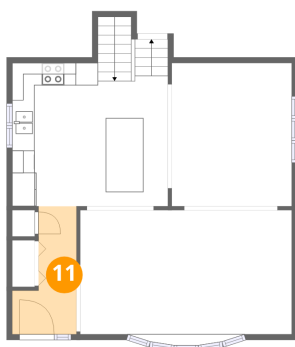
10 Floor 3 - Kitchen



Dimensions: 13'11" x 12'9"
Area: 178 sq. ft
Counted as living area: Yes

Heated: Yes
Finished: Yes
Enclosed: Yes
Contiguous: Yes
Permitted: Yes
Wet space: No
Addition: No
Conversion: No

11 Floor 3 - Foyer

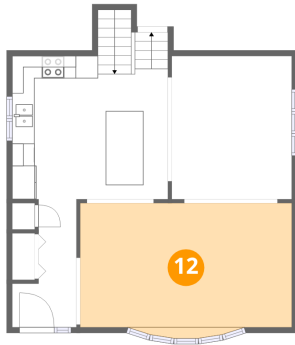


Dimensions: 5'9" x 11'5"
Area: 65 sq. ft
Counted as living area: Yes

Heated: Yes
Finished: Yes
Enclosed: Yes
Contiguous: Yes
Permitted: Yes
Wet space: No
Addition: No
Conversion: No

5446 S Rutherford Ave, Chicago, IL, US

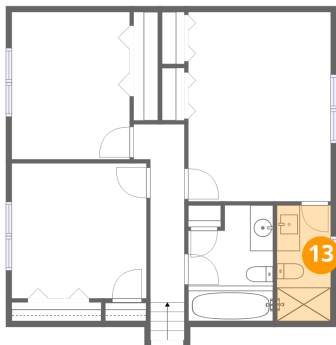
12 Floor 3 - Living Room



Dimensions: 18'11" x 12'1"
Area: 228 sq. ft
Counted as living area: Yes

Heated: Yes
Finished: Yes
Enclosed: Yes
Contiguous: Yes
Permitted: Yes
Wet space: No
Addition: No
Conversion: No

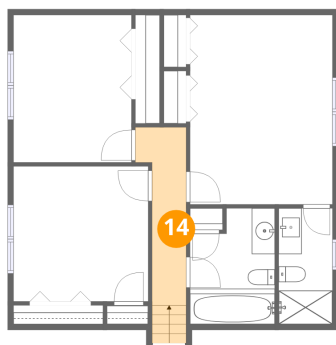
13 Floor 4 - Bath



Dimensions: 4'8" x 10'0"
Area: 47 sq. ft
Counted as living area: Yes

Heated: Yes
Finished: Yes
Enclosed: Yes
Contiguous: Yes
Permitted: Yes
Wet space: Yes
Addition: No
Conversion: No

14 Floor 4 - Hall

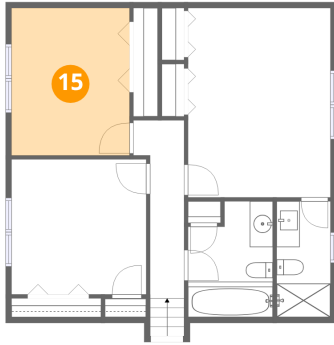


Dimensions: 4'5" x 15'4"
Area: 67 sq. ft
Counted as living area: Yes

Heated: Yes
Finished: Yes
Enclosed: Yes
Contiguous: Yes
Permitted: Yes
Wet space: No
Addition: No
Conversion: No

5446 S Rutherford Ave, Chicago, IL, US

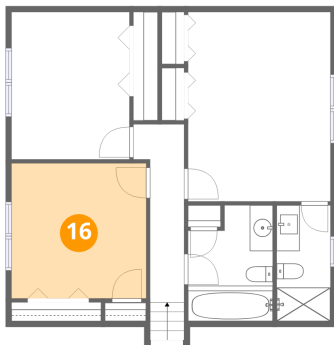
15 Floor 4 - Bedroom



Dimensions: 10'2" x 12'9"
Area: 130 sq. ft
Counted as living area: Yes

Heated: Yes
Finished: Yes
Enclosed: Yes
Contiguous: Yes
Permitted: Yes
Wet space: No
Addition: No
Conversion: No

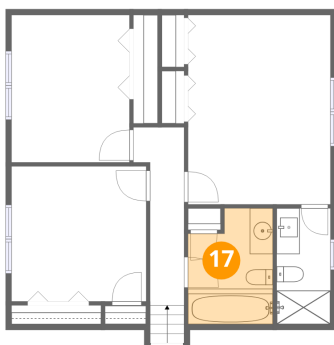
16 Floor 4 - Bedroom



Dimensions: 11'8" x 11'7"
Area: 135 sq. ft
Counted as living area: Yes

Heated: Yes
Finished: Yes
Enclosed: Yes
Contiguous: Yes
Permitted: Yes
Wet space: No
Addition: No
Conversion: No

17 Floor 4 - Bath

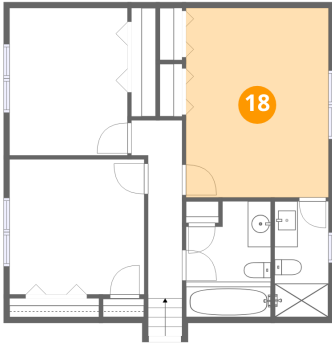


Dimensions: 7'4" x 10'0"
Area: 73 sq. ft
Counted as living area: Yes

Heated: Yes
Finished: Yes
Enclosed: Yes
Contiguous: Yes
Permitted: Yes
Wet space: Yes
Addition: No
Conversion: No

5446 S Rutherford Ave, Chicago, IL, US

18 Floor 4 - Primary Bedroom



Dimensions: 12'4" x 16'4"
Area: 201 sq. ft
Counted as living area: Yes

Heated: Yes
Finished: Yes
Enclosed: Yes
Contiguous: Yes
Permitted: Yes
Wet space: No
Addition: No
Conversion: No