

Home data report

1138 37th Avenue, Forest Grove, Washington County, Oregon,  
United States, 97116



Total Area: 3215 sq. ft

1st Floor: 1539 sq. ft, 2nd Floor: 1676 sq. ft

Excluded: Garage 629 sq. ft, Open to below 130 sq. ft, Walls: 225 sq. ft

Property summary



2 Floors



6 Bedrooms



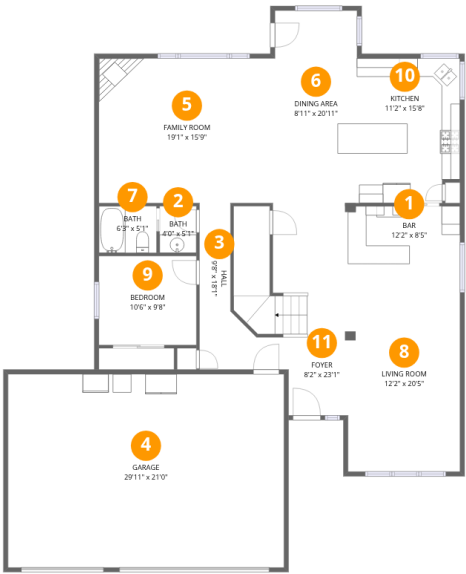
3 Bathrooms



1 Garages

Home data report

1138 37th Avenue, Forest Grove, Washington County, Oregon,  
United States, 97116



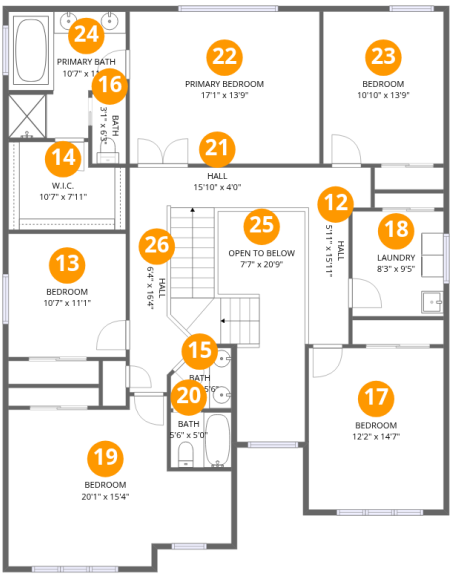
Room dimensions

Floor 1 Total:1539sqft    Excluded: 629sqft

#		Dimensions	sqft	Counted as living area
1	Bar	12'2" x 8'5"	102 sq. ft	Yes
2	Bath	4'0" x 5'1"	20 sq. ft	Yes
3	Hall	9'8" x 18'1"	100 sq. ft	Yes
4	Garage	29'11" x 21'0"	629 sq. ft	No
5	Family Room	19'1" x 15'9"	300 sq. ft	Yes
6	Dining Area	8'11" x 20'11"	186 sq. ft	Yes
7	Bath	6'3" x 5'1"	32 sq. ft	Yes
8	Living Room	12'2" x 20'5"	249 sq. ft	Yes
9	Bedroom	10'6" x 9'8"	102 sq. ft	Yes
10	Kitchen	11'2" x 15'8"	171 sq. ft	Yes
11	Foyer	8'2" x 23'1"	212 sq. ft	Yes

Home data report

1138 37th Avenue, Forest Grove, Washington County, Oregon,  
United States, 97116



Room dimensions

Floor 2 Total:1676sqft    Excluded: 130sqft

#		Dimensions	sqft	Counted as living area
12	Hall	5'11" x 15'11"	70 sq. ft	Yes
13	Bedroom	10'7" x 11'1"	118 sq. ft	Yes
14	W.I.C.	10'7" x 7'11"	76 sq. ft	Yes
15	Bath	5'6" x 5'6"	27 sq. ft	Yes
16	Bath	3'1" x 6'3"	19 sq. ft	Yes
17	Bedroom	12'2" x 14'7"	177 sq. ft	Yes
18	Laundry	8'3" x 9'5"	78 sq. ft	Yes
19	Bedroom	20'1" x 15'4"	241 sq. ft	Yes
20	Bath	5'6" x 5'0"	27 sq. ft	Yes
21	Hall	15'10" x 4'0"	63 sq. ft	Yes
22	Primary Bedroom	17'1" x 13'9"	235 sq. ft	Yes

## Home data report

**1138 37th Avenue, Forest Grove, Washington County, Oregon,  
United States, 97116**

#		Dimensions	sqft	Counted as living area
23	Bedroom	10'10" x 13'9"	149 sq. ft	Yes
24	Primary Bath	10'7" x 11'5"	105 sq. ft	Yes
25	Open To Below	7'7" x 20'9"	130 sq. ft	No
26	Hall	6'4" x 16'4"	131 sq. ft	Yes

1138 37th Avenue, Forest Grove, Washington County, Oregon,  
United States, 97116

1 Floor 1 - Bar



Dimensions: 12'2" x 8'5"  
Area: 102 sq. ft  
Counted as living area: Yes

Heated: Yes  
Finished: Yes  
Enclosed: Yes  
Contiguous: Yes  
Permitted: Yes  
Wet space: No  
Addition: No  
Conversion: No

2 Floor 1 - Bath



Dimensions: 4'0" x 5'1"  
Area: 20 sq. ft  
Counted as living area: Yes

Heated: Yes  
Finished: Yes  
Enclosed: Yes  
Contiguous: Yes  
Permitted: Yes  
Wet space: Yes  
Addition: No  
Conversion: No

1138 37th Avenue, Forest Grove, Washington County, Oregon,  
United States, 97116

3 Floor 1 - Hall



Dimensions: 9'8" x 18'1"  
Area: 100 sq. ft  
Counted as living area: Yes

Heated: Yes  
Finished: Yes  
Enclosed: Yes  
Contiguous: Yes  
Permitted: Yes  
Wet space: No  
Addition: No  
Conversion: No

4 Floor 1 - Garage



Dimensions: 29'11" x 21'0"  
Area: 629 sq. ft  
Counted as living area: No

Heated: No  
Finished: No  
Enclosed: Yes  
Contiguous: Yes  
Permitted: Yes  
Wet space: No  
Addition: No  
Conversion: No

5 Floor 1 - Family Room



Dimensions: 19'1" x 15'9"  
Area: 300 sq. ft  
Counted as living area: Yes

Heated: Yes  
Finished: Yes  
Enclosed: Yes  
Contiguous: Yes  
Permitted: Yes  
Wet space: No  
Addition: No  
Conversion: No

1138 37th Avenue, Forest Grove, Washington County, Oregon,  
United States, 97116

6 Floor 1 - Dining Area



Dimensions: 8'11" x 20'11"  
Area: 186 sq. ft  
Counted as living area: Yes

Heated: Yes  
Finished: Yes  
Enclosed: Yes  
Contiguous: Yes  
Permitted: Yes  
Wet space: No  
Addition: No  
Conversion: No

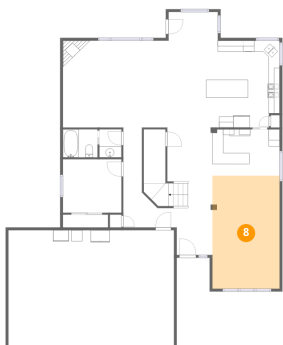
7 Floor 1 - Bath



Dimensions: 6'3" x 5'1"  
Area: 32 sq. ft  
Counted as living area: Yes

Heated: Yes  
Finished: Yes  
Enclosed: Yes  
Contiguous: Yes  
Permitted: Yes  
Wet space: Yes  
Addition: No  
Conversion: No

8 Floor 1 - Living Room



Dimensions: 12'2" x 20'5"  
Area: 249 sq. ft  
Counted as living area: Yes

Heated: Yes  
Finished: Yes  
Enclosed: Yes  
Contiguous: Yes  
Permitted: Yes  
Wet space: No  
Addition: No  
Conversion: No

## Home data report

1138 37th Avenue, Forest Grove, Washington County, Oregon,  
United States, 97116

### 9 Floor 1 - Bedroom

---



Dimensions: 10'6" x 9'8"  
Area: 102 sq. ft  
Counted as living area: Yes

Heated: Yes  
Finished: Yes  
Enclosed: Yes  
Contiguous: Yes  
Permitted: Yes  
Wet space: No  
Addition: No  
Conversion: No

### 10 Floor 1 - Kitchen

---



Dimensions: 11'2" x 15'8"  
Area: 171 sq. ft  
Counted as living area: Yes

Heated: Yes  
Finished: Yes  
Enclosed: Yes  
Contiguous: Yes  
Permitted: Yes  
Wet space: No  
Addition: No  
Conversion: No

### 11 Floor 1 - Foyer

---



Dimensions: 8'2" x 23'1"  
Area: 212 sq. ft  
Counted as living area: Yes

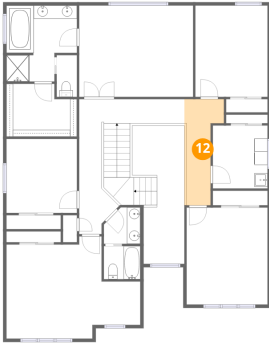
Heated: Yes  
Finished: Yes  
Enclosed: Yes  
Contiguous: Yes  
Permitted: Yes  
Wet space: No  
Addition: No  
Conversion: No



## Home data report

1138 37th Avenue, Forest Grove, Washington County, Oregon,  
United States, 97116

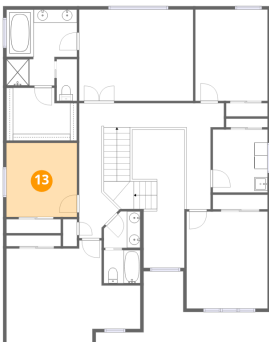
### 12 Floor 2 - Hall



Dimensions: 5'11" x 15'11"  
Area: 70 sq. ft  
Counted as living area: Yes

Heated: Yes  
Finished: Yes  
Enclosed: Yes  
Contiguous: Yes  
Permitted: Yes  
Wet space: No  
Addition: No  
Conversion: No

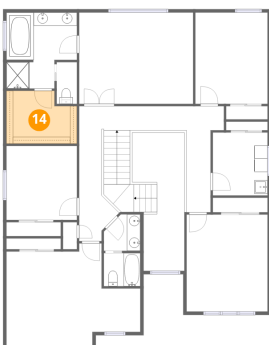
### 13 Floor 2 - Bedroom



Dimensions: 10'7" x 11'1"  
Area: 118 sq. ft  
Counted as living area: Yes

Heated: Yes  
Finished: Yes  
Enclosed: Yes  
Contiguous: Yes  
Permitted: Yes  
Wet space: No  
Addition: No  
Conversion: No

### 14 Floor 2 - W.I.C.



Dimensions: 10'7" x 7'11"  
Area: 76 sq. ft  
Counted as living area: Yes

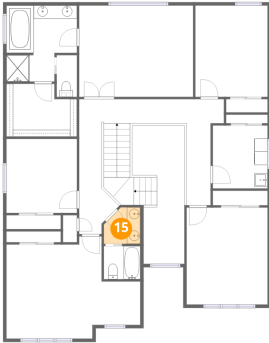
Heated: Yes  
Finished: Yes  
Enclosed: Yes  
Contiguous: Yes  
Permitted: Yes  
Wet space: No  
Addition: No  
Conversion: No

## Home data report

1138 37th Avenue, Forest Grove, Washington County, Oregon,  
United States, 97116

### 15 Floor 2 - Bath

---

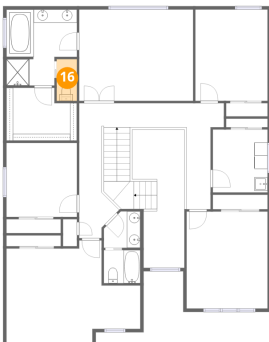


Dimensions: 5'6" x 5'6"  
Area: 27 sq. ft  
Counted as living area: Yes

Heated: Yes  
Finished: Yes  
Enclosed: Yes  
Contiguous: Yes  
Permitted: Yes  
Wet space: Yes  
Addition: No  
Conversion: No

### 16 Floor 2 - Bath

---

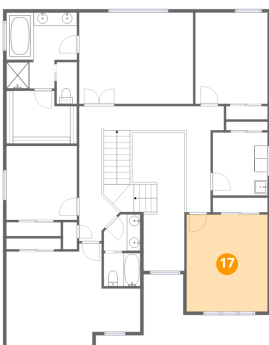


Dimensions: 3'1" x 6'3"  
Area: 19 sq. ft  
Counted as living area: Yes

Heated: Yes  
Finished: Yes  
Enclosed: Yes  
Contiguous: Yes  
Permitted: Yes  
Wet space: Yes  
Addition: No  
Conversion: No

### 17 Floor 2 - Bedroom

---



Dimensions: 12'2" x 14'7"  
Area: 177 sq. ft  
Counted as living area: Yes

Heated: Yes  
Finished: Yes  
Enclosed: Yes  
Contiguous: Yes  
Permitted: Yes  
Wet space: No  
Addition: No  
Conversion: No

## Home data report

1138 37th Avenue, Forest Grove, Washington County, Oregon,  
United States, 97116

### 18 Floor 2 - Laundry

---

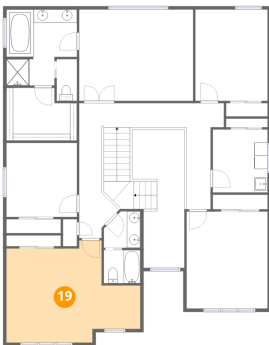


Dimensions: 8'3" x 9'5"  
Area: 78 sq. ft  
Counted as living area: Yes

Heated: Yes  
Finished: Yes  
Enclosed: Yes  
Contiguous: Yes  
Permitted: Yes  
Wet space: No  
Addition: No  
Conversion: No

### 19 Floor 2 - Bedroom

---

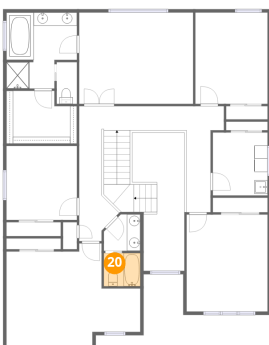


Dimensions: 20'1" x 15'4"  
Area: 241 sq. ft  
Counted as living area: Yes

Heated: Yes  
Finished: Yes  
Enclosed: Yes  
Contiguous: Yes  
Permitted: Yes  
Wet space: No  
Addition: No  
Conversion: No

### 20 Floor 2 - Bath

---



Dimensions: 5'6" x 5'0"  
Area: 27 sq. ft  
Counted as living area: Yes

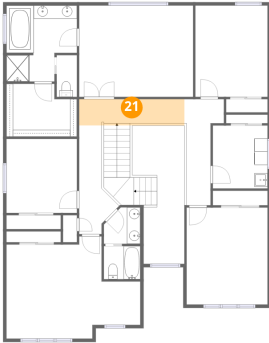
Heated: Yes  
Finished: Yes  
Enclosed: Yes  
Contiguous: Yes  
Permitted: Yes  
Wet space: Yes  
Addition: No  
Conversion: No

## Home data report

1138 37th Avenue, Forest Grove, Washington County, Oregon,  
United States, 97116

### 21 Floor 2 - Hall

---

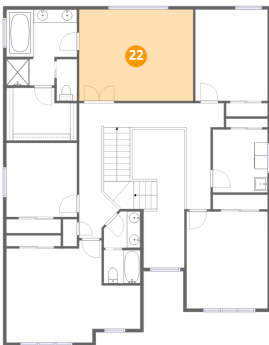


Dimensions: 15'10" x 4'0"  
Area: 63 sq. ft  
Counted as living area: Yes

Heated: Yes  
Finished: Yes  
Enclosed: Yes  
Contiguous: Yes  
Permitted: Yes  
Wet space: No  
Addition: No  
Conversion: No

### 22 Floor 2 - Primary Bedroom

---

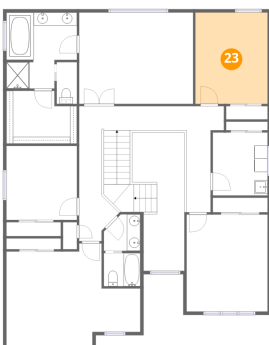


Dimensions: 17'1" x 13'9"  
Area: 235 sq. ft  
Counted as living area: Yes

Heated: Yes  
Finished: Yes  
Enclosed: Yes  
Contiguous: Yes  
Permitted: Yes  
Wet space: No  
Addition: No  
Conversion: No

### 23 Floor 2 - Bedroom

---

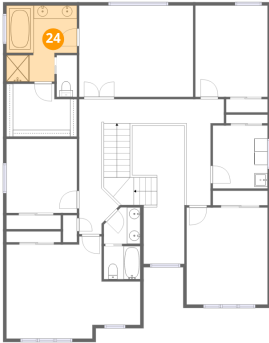


Dimensions: 10'10" x 13'9"  
Area: 149 sq. ft  
Counted as living area: Yes

Heated: Yes  
Finished: Yes  
Enclosed: Yes  
Contiguous: Yes  
Permitted: Yes  
Wet space: No  
Addition: No  
Conversion: No

1138 37th Avenue, Forest Grove, Washington County, Oregon,  
United States, 97116

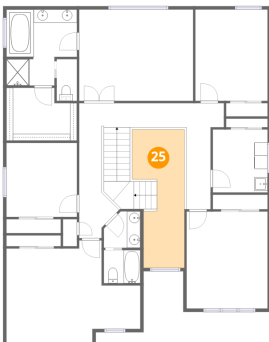
## 24 Floor 2 - Primary Bath



Dimensions: 10'7" x 11'5"  
Area: 105 sq. ft  
Counted as living area: Yes

Heated: Yes  
Finished: Yes  
Enclosed: Yes  
Contiguous: Yes  
Permitted: Yes  
Wet space: Yes  
Addition: No  
Conversion: No

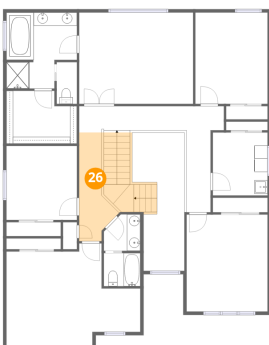
## 25 Floor 2 - Open To Below



Dimensions: 7'7" x 20'9"  
Area: 130 sq. ft  
Counted as living area: No

Heated: No  
Finished: No  
Enclosed: No  
Contiguous: Yes  
Permitted: No  
Wet space: No  
Addition: No  
Conversion: No

## 26 Floor 2 - Hall



Dimensions: 6'4" x 16'4"  
Area: 131 sq. ft  
Counted as living area: Yes

Heated: Yes  
Finished: Yes  
Enclosed: Yes  
Contiguous: Yes  
Permitted: Yes  
Wet space: No  
Addition: No  
Conversion: No