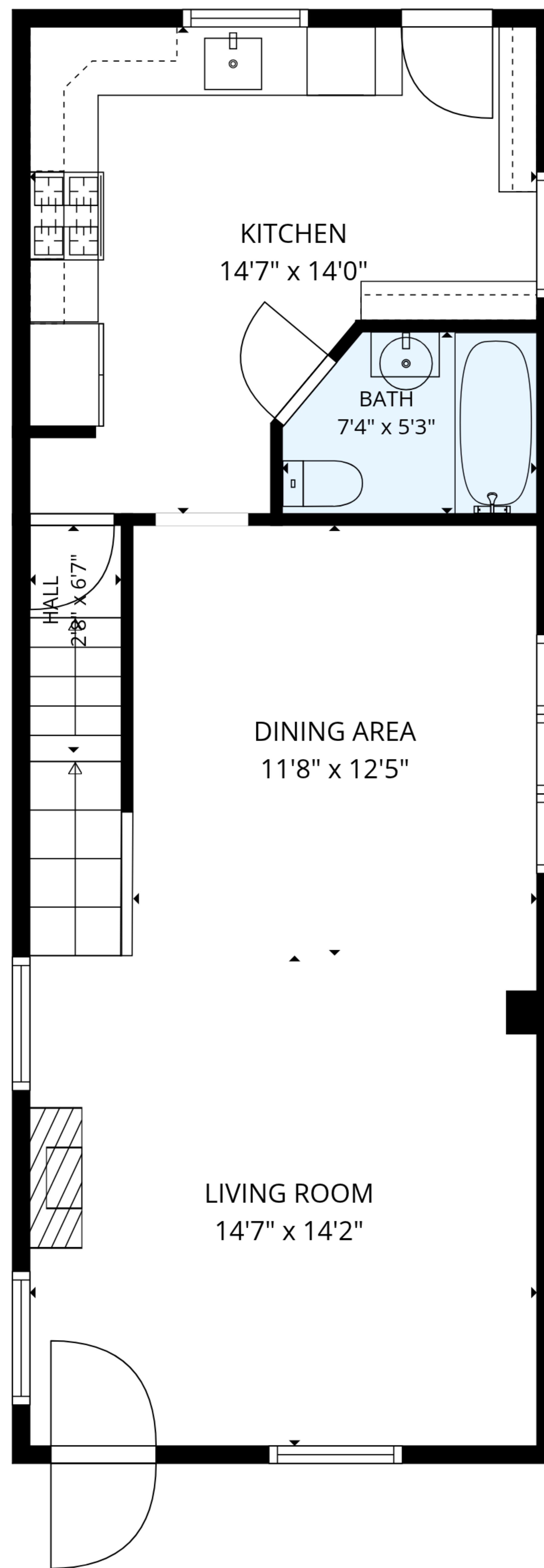


**TOTAL: 1515 sq. ft**

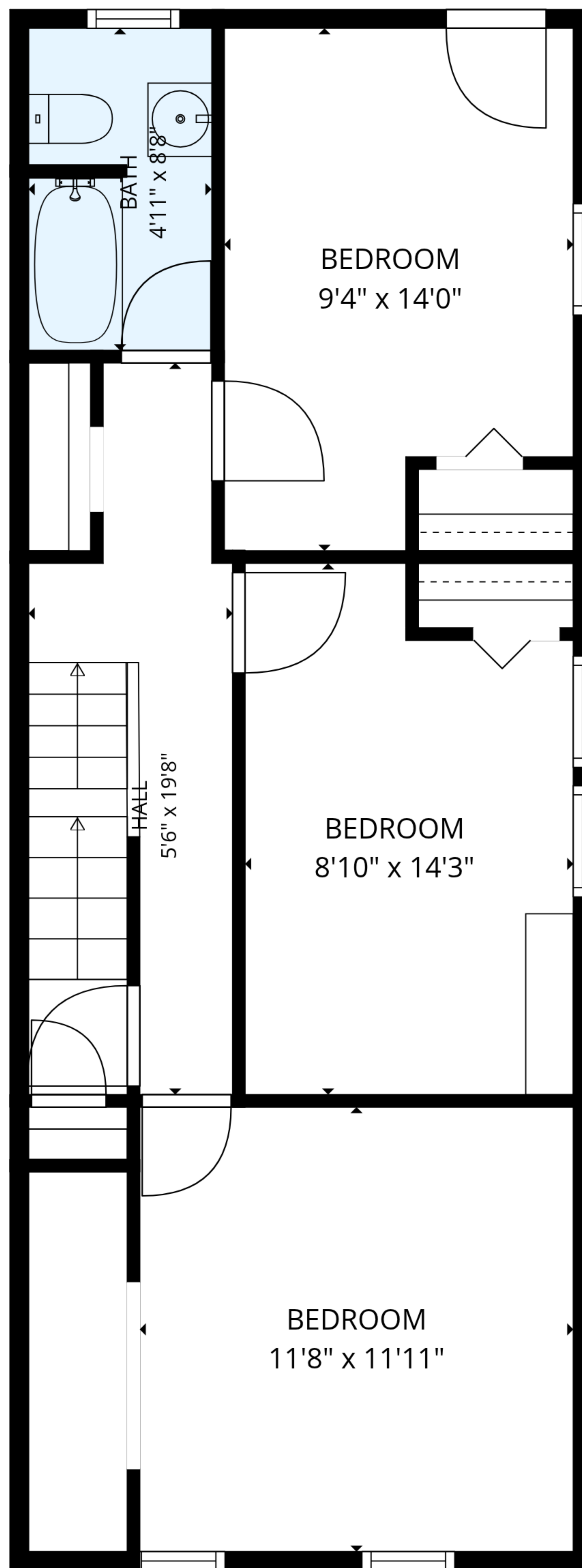
Basement: 0 sq. ft, 1st floor: 598 sq. ft, 2nd floor: 598 sq. ft, 3rd floor: 319 sq. ft  
EXCLUDED AREAS: BASEMENT: 603 sq. ft, STORAGE: 99 sq. ft, ATTIC: 163 sq. ft,  
WALLS: 227 sq. ft



**TOTAL: 1515 sq. ft**

Basement: 0 sq. ft, 1st floor: 598 sq. ft, 2nd floor: 598 sq. ft, 3rd floor: 319 sq. ft  
EXCLUDED AREAS: BASEMENT: 603 sq. ft, STORAGE: 99 sq. ft, ATTIC: 163 sq. ft,  
WALLS: 227 sq. ft

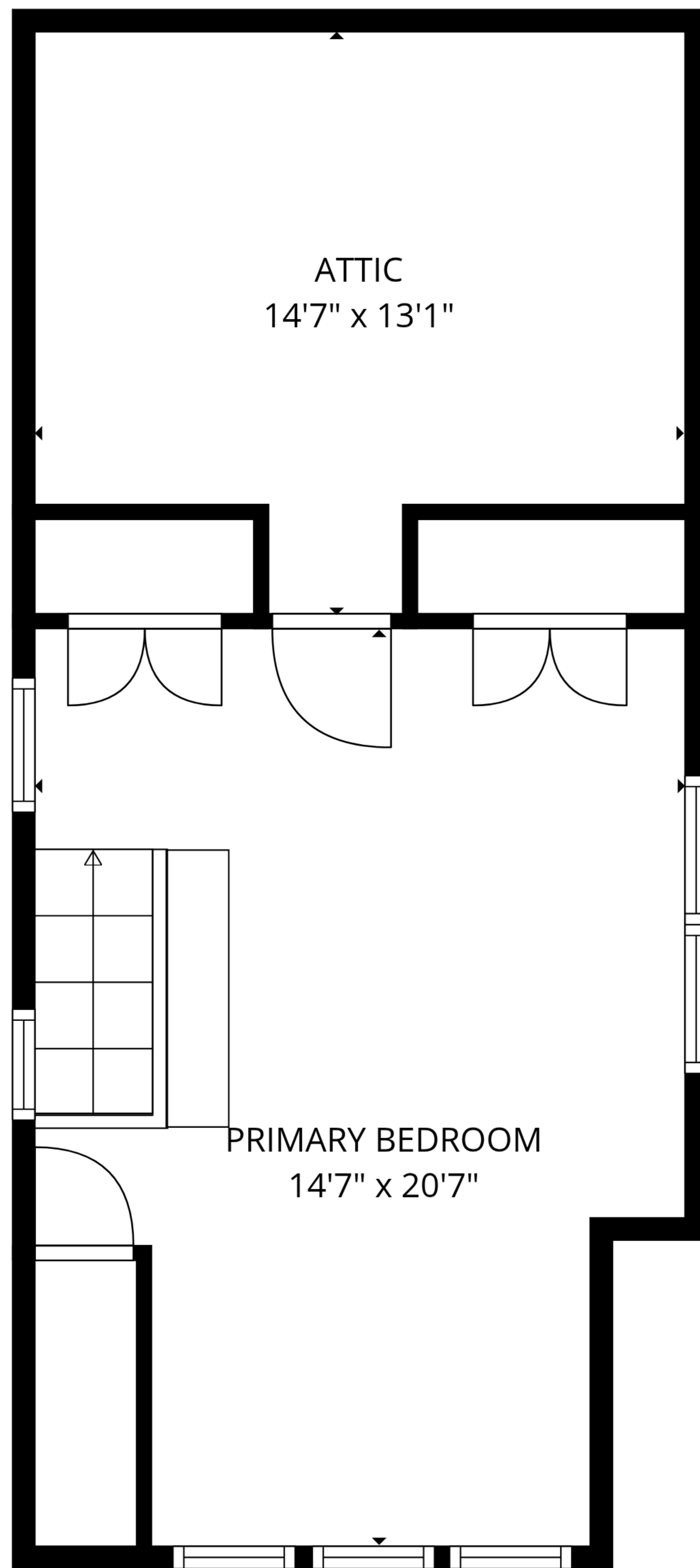
MEASUREMENTS ARE DEEMED RELIABLE BUT ARE NOT GUARANTEED.



**TOTAL: 1515 sq. ft**

Basement: 0 sq. ft, 1st floor: 598 sq. ft, 2nd floor: 598 sq. ft, 3rd floor: 319 sq. ft  
EXCLUDED AREAS: BASEMENT: 603 sq. ft, STORAGE: 99 sq. ft, ATTIC: 163 sq. ft,  
WALLS: 227 sq. ft

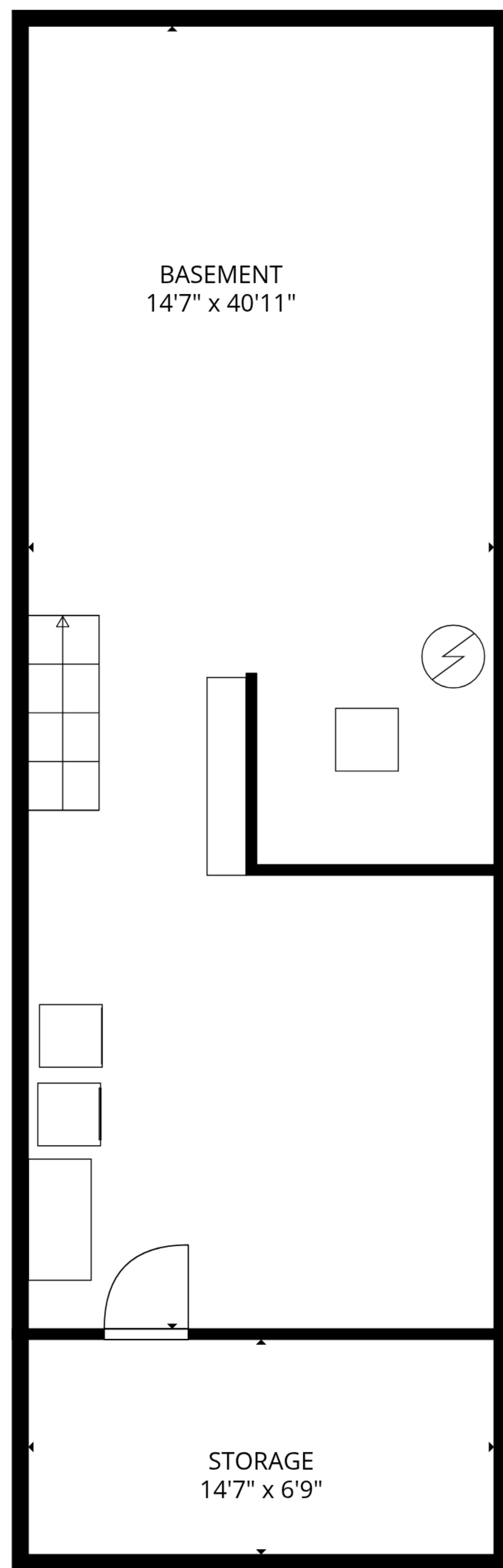
MEASUREMENTS ARE DEEMED RELIABLE BUT ARE NOT GUARANTEED.



**TOTAL: 1515 sq. ft**

Basement: 0 sq. ft, 1st floor: 598 sq. ft, 2nd floor: 598 sq. ft, 3rd floor: 319 sq. ft  
EXCLUDED AREAS: BASEMENT: 603 sq. ft, STORAGE: 99 sq. ft, ATTIC: 163 sq. ft,  
WALLS: 227 sq. ft

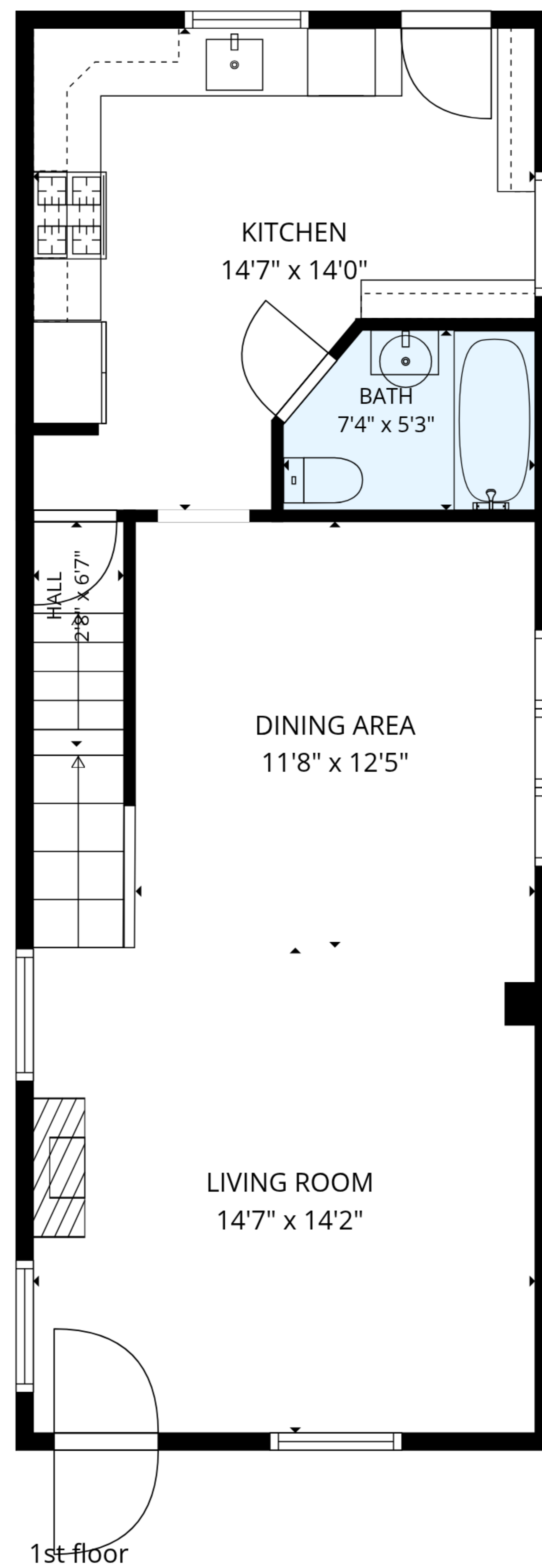
MEASUREMENTS ARE DEEMED RELIABLE BUT ARE NOT GUARANTEED.



BASEMENT  
14'7" x 40'11"

STORAGE  
14'7" x 6'9"

Basement



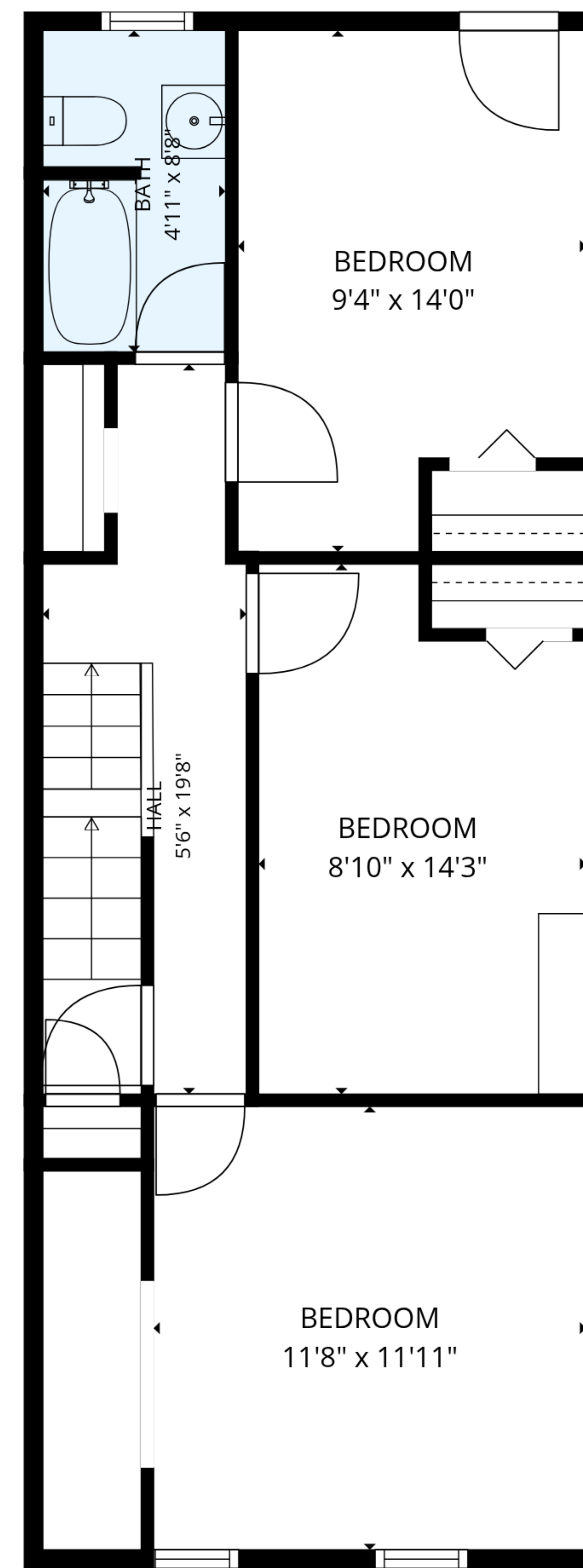
KITCHEN  
14'7" x 14'0"

BATH  
7'4" x 5'3"

DINING AREA  
11'8" x 12'5"

LIVING ROOM  
14'7" x 14'2"

1st floor



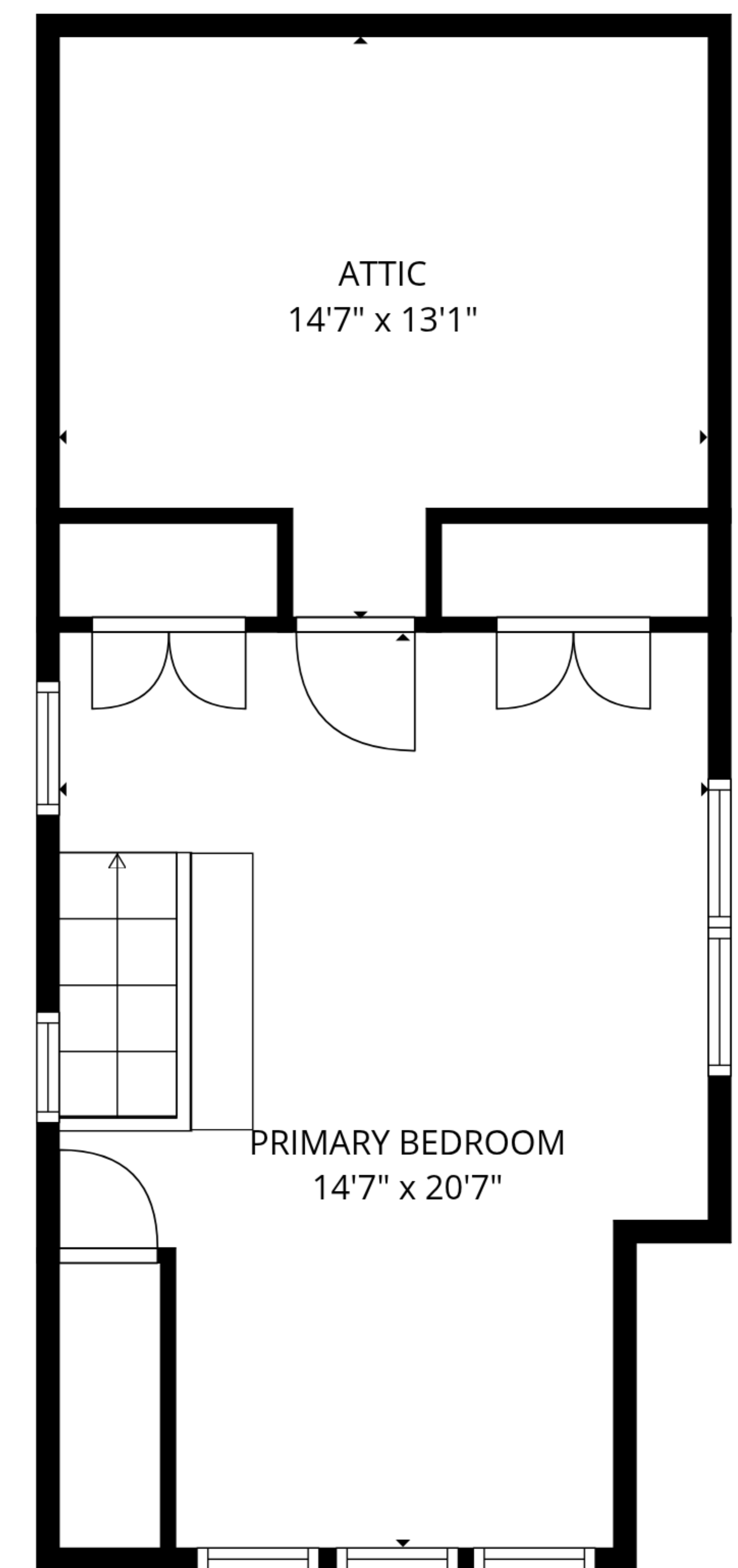
BEDROOM  
9'4" x 14'0"

BATH  
4'11" x 8'3"

BEDROOM  
8'10" x 14'3"

BEDROOM  
11'8" x 11'11"

2nd floor



ATTIC  
14'7" x 13'1"

PRIMARY BEDROOM  
14'7" x 20'7"

3rd floor

**TOTAL: 1515 sq. ft**

Basement: 0 sq. ft, 1st floor: 598 sq. ft, 2nd floor: 598 sq. ft, 3rd floor: 319 sq. ft  
 EXCLUDED AREAS: BASEMENT: 603 sq. ft, STORAGE: 99 sq. ft, ATTIC: 163 sq. ft,  
 WALLS: 227 sq. ft

MEASUREMENTS ARE DEEMED RELIABLE BUT ARE NOT GUARANTEED.