

## Home data report

116 Ryland Street, Stonebridge, Nepean, Ontario, Canada, K2J 6R1



**Total Area: 2753 sq. ft**

Basement: 633 sq. ft, 1st Floor: 901 sq. ft, 2nd Floor: 1219 sq. ft

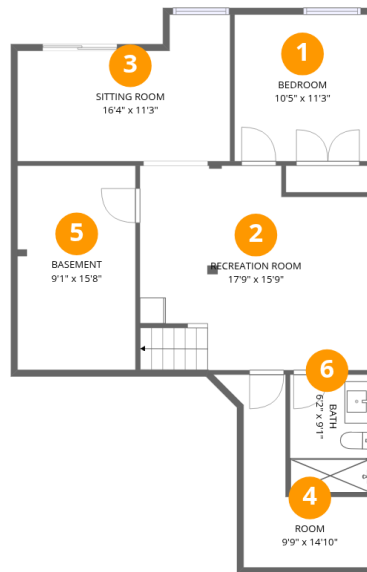
Excluded: Room 86 sq. ft, Basement 143 sq. ft, Balcony 26 sq. ft, Garage 296 sq. ft, Fireplace 10 sq. ft, Walls: 232 sq. ft

## Property summary



## Home data report

116 Ryland Street, Stonebridge, Nepean, Ontario, Canada, K2J 6R1



## Room dimensions

Floor 1 Below grade

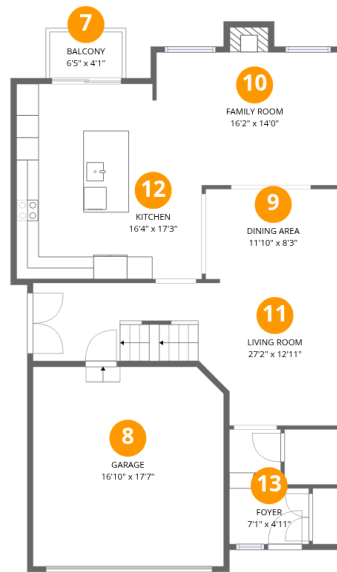
Total:633sqft

Excluded: 229sqft

| # |                 | Dimensions    | sqft       | Counted as living area |
|---|-----------------|---------------|------------|------------------------|
| 1 | Bedroom         | 10'5" x 11'3" | 118 sq. ft | Yes                    |
| 2 | Recreation Room | 17'9" x 15'9" | 261 sq. ft | Yes                    |
| 3 | Sitting Room    | 16'4" x 11'3" | 152 sq. ft | Yes                    |
| 4 | Room            | 9'9" x 14'10" | 86 sq. ft  | No                     |
| 5 | Basement        | 9'1" x 15'8"  | 142 sq. ft | No                     |
| 6 | Bath            | 6'2" x 9'1"   | 56 sq. ft  | Yes                    |

## Home data report

116 Ryland Street, Stonebridge, Nepean, Ontario, Canada, K2J 6R1



## Room dimensions

Floor 2

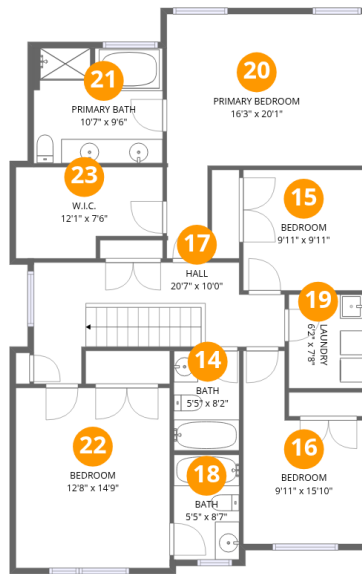
Total:901sqft

Excluded: 332sqft

| #  |             | Dimensions     | sqft       | Counted as living area |
|----|-------------|----------------|------------|------------------------|
| 7  | Balcony     | 6'5" x 4'1"    | 26 sq. ft  | No                     |
| 8  | Garage      | 16'10" x 17'7" | 296 sq. ft | No                     |
| 9  | Dining Area | 11'10" x 8'3"  | 96 sq. ft  | Yes                    |
| 10 | Family Room | 16'2" x 14'0"  | 184 sq. ft | Yes                    |
| 11 | Living Room | 27'2" x 12'11" | 249 sq. ft | Yes                    |
| 12 | Kitchen     | 16'4" x 17'3"  | 262 sq. ft | Yes                    |
| 13 | Foyer       | 7'1" x 4'11"   | 59 sq. ft  | Yes                    |

## Home data report

116 Ryland Street, Stonebridge, Nepean, Ontario, Canada, K2J 6R1



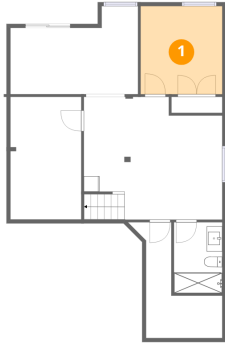
## Room dimensions

Floor 3

Total:1219sqft Excluded: 0sqft

| #  |                 | Dimensions     | sqft       | Counted as living area |
|----|-----------------|----------------|------------|------------------------|
| 14 | Bath            | 5'5" x 8'2"    | 44 sq. ft  | Yes                    |
| 15 | Bedroom         | 9'11" x 9'11"  | 98 sq. ft  | Yes                    |
| 16 | Bedroom         | 9'11" x 15'10" | 120 sq. ft | Yes                    |
| 17 | Hall            | 20'7" x 10'0"  | 145 sq. ft | Yes                    |
| 18 | Bath            | 5'5" x 8'7"    | 46 sq. ft  | Yes                    |
| 19 | Laundry         | 6'2" x 7'8"    | 48 sq. ft  | Yes                    |
| 20 | Primary Bedroom | 16'3" x 20'1"  | 228 sq. ft | Yes                    |
| 21 | Primary Bath    | 10'7" x 9'6"   | 99 sq. ft  | Yes                    |
| 22 | Bedroom         | 12'8" x 14'9"  | 187 sq. ft | Yes                    |
| 23 | W.I.C.          | 12'1" x 7'6"   | 81 sq. ft  | Yes                    |

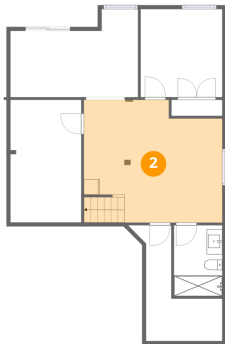
## 1 Floor 1 - Bedroom



Dimensions: 10'5" x 11'3"  
Area: 118 sq. ft  
Counted as living area: Yes

Heated: Yes  
Finished: Yes  
Enclosed: Yes  
Contiguous: Yes  
Permitted: Yes  
Wet space: No  
Addition: No  
Conversion: No

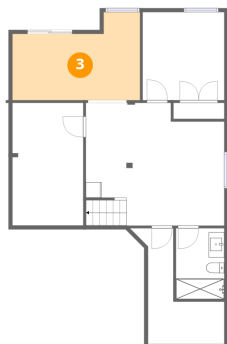
## 2 Floor 1 - Recreation Room



Dimensions: 17'9" x 15'9"  
Area: 261 sq. ft  
Counted as living area: Yes

Heated: Yes  
Finished: Yes  
Enclosed: Yes  
Contiguous: Yes  
Permitted: Yes  
Wet space: No  
Addition: No  
Conversion: No

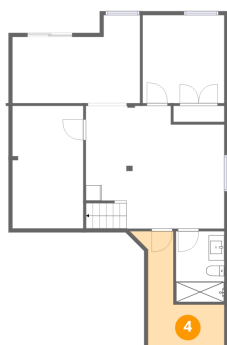
### 3 Floor 1 - Sitting Room



Dimensions: 16'4" x 11'3"  
Area: 152 sq. ft  
Counted as living area: Yes

Heated: Yes  
Finished: Yes  
Enclosed: Yes  
Contiguous: Yes  
Permitted: Yes  
Wet space: No  
Addition: No  
Conversion: No

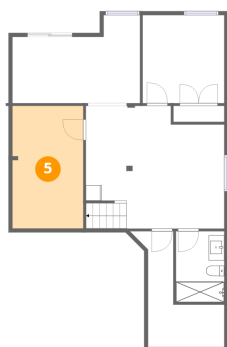
### 4 Floor 1 - Room



Dimensions: 9'9" x 14'10"  
Area: 86 sq. ft  
Counted as living area: No

Heated: Yes  
Finished: No  
Enclosed: Yes  
Contiguous: Yes  
Permitted: Yes  
Wet space: No  
Addition: No  
Conversion: No

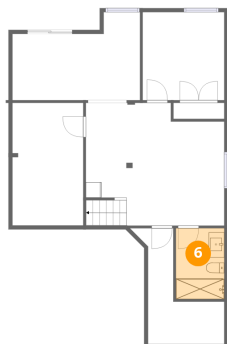
### 5 Floor 1 - Basement



Dimensions: 9'1" x 15'8"  
Area: 142 sq. ft  
Counted as living area: No

Heated: Yes  
Finished: No  
Enclosed: Yes  
Contiguous: Yes  
Permitted: Yes  
Wet space: No  
Addition: No  
Conversion: No

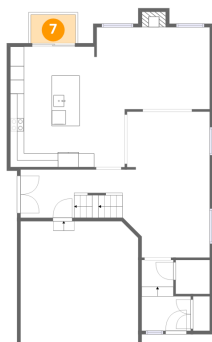
### 6 Floor 1 - Bath



Dimensions: 6'2" x 9'1"  
Area: 56 sq. ft  
Counted as living area: Yes

Heated: Yes  
Finished: Yes  
Enclosed: Yes  
Contiguous: Yes  
Permitted: Yes  
Wet space: Yes  
Addition: No  
Conversion: No

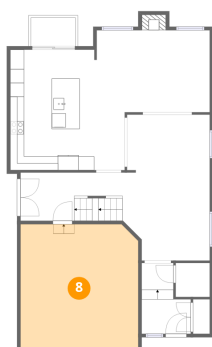
### 7 Floor 2 - Balcony



Dimensions: 6'5" x 4'1"  
Area: 26 sq. ft  
Counted as living area: No

Heated: No  
Finished: No  
Enclosed: No  
Contiguous: Yes  
Permitted: Yes  
Wet space: No  
Addition: No  
Conversion: No

### 8 Floor 2 - Garage



Dimensions: 16'10" x 17'7"  
Area: 296 sq. ft  
Counted as living area: No

Heated: No  
Finished: No  
Enclosed: Yes  
Contiguous: Yes  
Permitted: Yes  
Wet space: No  
Addition: No  
Conversion: No

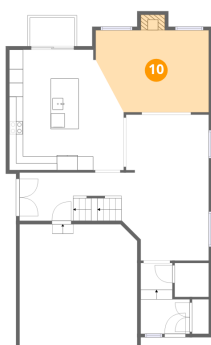
## 9 Floor 2 - Dining Area



Dimensions: 11'10" x 8'3"  
Area: 96 sq. ft  
Counted as living area: Yes

Heated: Yes  
Finished: Yes  
Enclosed: Yes  
Contiguous: Yes  
Permitted: Yes  
Wet space: No  
Addition: No  
Conversion: No

## 10 Floor 2 - Family Room



Dimensions: 16'2" x 14'0"  
Area: 184 sq. ft  
Counted as living area: Yes

Heated: Yes  
Finished: Yes  
Enclosed: Yes  
Contiguous: Yes  
Permitted: Yes  
Wet space: No  
Addition: No  
Conversion: No

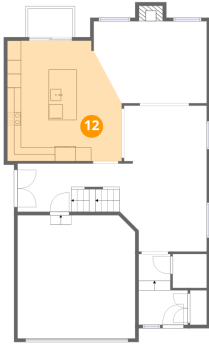
## 11 Floor 2 - Living Room



Dimensions: 27'2" x 12'11"  
Area: 249 sq. ft  
Counted as living area: Yes

Heated: Yes  
Finished: Yes  
Enclosed: Yes  
Contiguous: Yes  
Permitted: Yes  
Wet space: No  
Addition: No  
Conversion: No

## 12 Floor 2 - Kitchen



Dimensions: 16'4" x 17'3"  
Area: 262 sq. ft  
Counted as living area: Yes

Heated: Yes  
Finished: Yes  
Enclosed: Yes  
Contiguous: Yes  
Permitted: Yes  
Wet space: No  
Addition: No  
Conversion: No

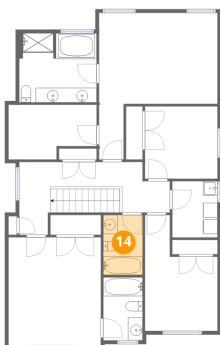
## 13 Floor 2 - Foyer



Dimensions: 7'1" x 4'11"  
Area: 59 sq. ft  
Counted as living area: Yes

Heated: Yes  
Finished: Yes  
Enclosed: Yes  
Contiguous: Yes  
Permitted: Yes  
Wet space: No  
Addition: No  
Conversion: No

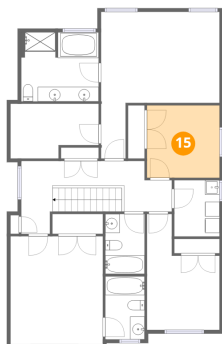
## 14 Floor 3 - Bath



Dimensions: 5'5" x 8'2"  
Area: 44 sq. ft  
Counted as living area: Yes

Heated: Yes  
Finished: Yes  
Enclosed: Yes  
Contiguous: Yes  
Permitted: Yes  
Wet space: Yes  
Addition: No  
Conversion: No

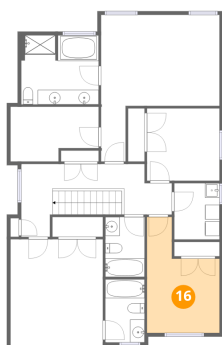
**15** Floor 3 - Bedroom



Dimensions: 9'11" x 9'11"  
Area: 98 sq. ft  
Counted as living area: Yes

Heated: Yes  
Finished: Yes  
Enclosed: Yes  
Contiguous: Yes  
Permitted: Yes  
Wet space: No  
Addition: No  
Conversion: No

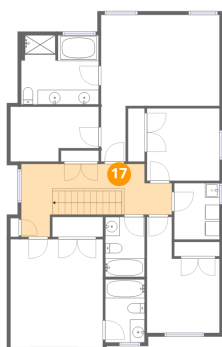
**16** Floor 3 - Bedroom



Dimensions: 9'11" x 15'10"  
Area: 120 sq. ft  
Counted as living area: Yes

Heated: Yes  
Finished: Yes  
Enclosed: Yes  
Contiguous: Yes  
Permitted: Yes  
Wet space: No  
Addition: No  
Conversion: No

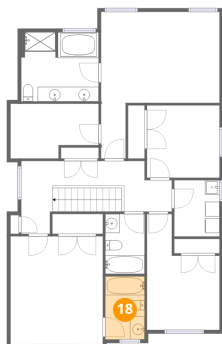
**17** Floor 3 - Hall



Dimensions: 20'7" x 10'0"  
Area: 145 sq. ft  
Counted as living area: Yes

Heated: Yes  
Finished: Yes  
Enclosed: Yes  
Contiguous: Yes  
Permitted: Yes  
Wet space: No  
Addition: No  
Conversion: No

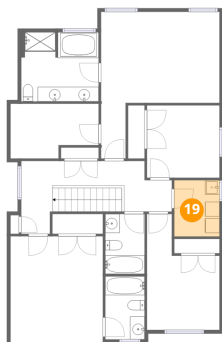
**18** Floor 3 - Bath



Dimensions: 5'5" x 8'7"  
Area: 46 sq. ft  
Counted as living area: Yes

Heated: Yes  
Finished: Yes  
Enclosed: Yes  
Contiguous: Yes  
Permitted: Yes  
Wet space: Yes  
Addition: No  
Conversion: No

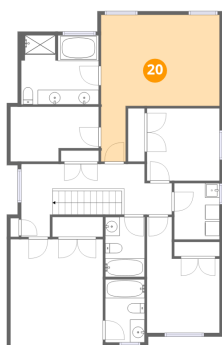
**19** Floor 3 - Laundry



Dimensions: 6'2" x 7'8"  
Area: 48 sq. ft  
Counted as living area: Yes

Heated: Yes  
Finished: Yes  
Enclosed: Yes  
Contiguous: Yes  
Permitted: Yes  
Wet space: No  
Addition: No  
Conversion: No

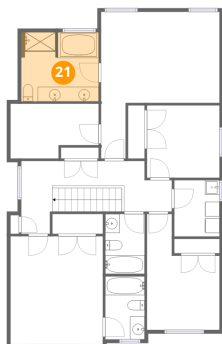
**20** Floor 3 - Primary Bedroom



Dimensions: 16'3" x 20'1"  
Area: 228 sq. ft  
Counted as living area: Yes

Heated: Yes  
Finished: Yes  
Enclosed: Yes  
Contiguous: Yes  
Permitted: Yes  
Wet space: No  
Addition: No  
Conversion: No

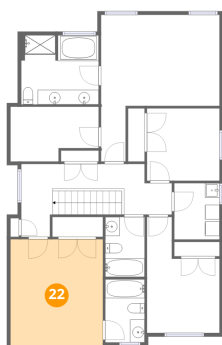
### 21 Floor 3 - Primary Bath



Dimensions: 10'7" x 9'6"  
Area: 99 sq. ft  
Counted as living area: Yes

Heated: Yes  
Finished: Yes  
Enclosed: Yes  
Contiguous: Yes  
Permitted: Yes  
Wet space: Yes  
Addition: No  
Conversion: No

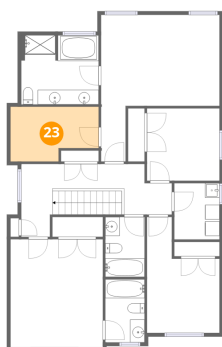
### 22 Floor 3 - Bedroom



Dimensions: 12'8" x 14'9"  
Area: 187 sq. ft  
Counted as living area: Yes

Heated: Yes  
Finished: Yes  
Enclosed: Yes  
Contiguous: Yes  
Permitted: Yes  
Wet space: No  
Addition: No  
Conversion: No

### 23 Floor 3 - W.I.C.



Dimensions: 12'1" x 7'6"  
Area: 81 sq. ft  
Counted as living area: Yes

Heated: Yes  
Finished: Yes  
Enclosed: Yes  
Contiguous: Yes  
Permitted: Yes  
Wet space: No  
Addition: No  
Conversion: No