

Home data report

2159 Cypress St, Longmont, CO, US



Total Area: 1605 sq. ft

1st Floor: 1605 sq. ft

Excluded: Garage 623 sq. ft, Covered patio 86 sq. ft, Porch 43 sq. ft, Fireplace 13 sq. ft,

Walls: 127 sq. ft

Property summary



1 Floors



3 Bedrooms

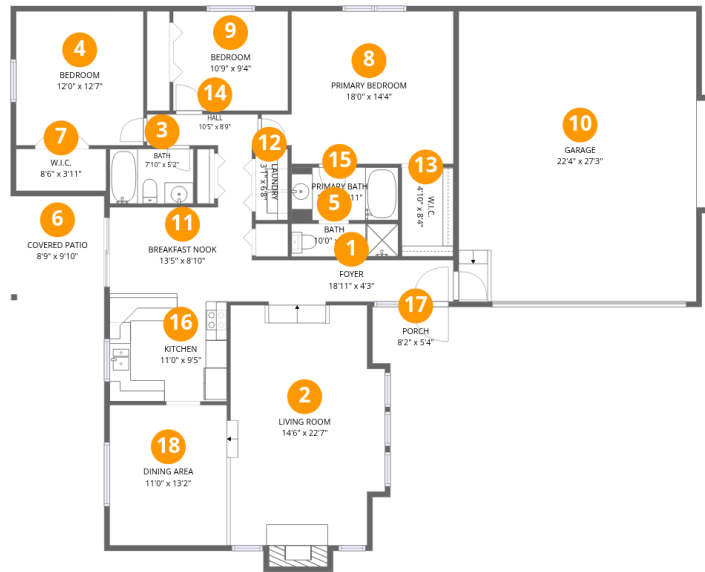


2 Bathrooms



1 Garages

2159 Cypress St, Longmont, CO, US



Room dimensions

Floor 1

Total: 1605 sqft

Excluded: 765 sqft

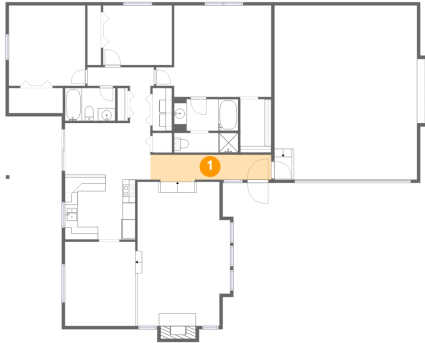
#		Dimensions	sqft	Counted as living area
1	Foyer	18'11" x 4'3"	75 sq. ft	Yes
2	Living Room	14'6" x 22'7"	320 sq. ft	Yes
3	Bath	7'10" x 5'2"	40 sq. ft	Yes
4	Bedroom	12'0" x 12'7"	151 sq. ft	Yes
5	Bath	10'0" x 3'1"	31 sq. ft	Yes
6	Covered Patio	8'9" x 9'10"	86 sq. ft	No
7	W.I.C.	8'6" x 3'11"	33 sq. ft	Yes
8	Primary Bedroom	18'0" x 14'4"	226 sq. ft	Yes
9	Bedroom	10'9" x 9'4"	101 sq. ft	Yes
10	Garage	22'4" x 27'3"	621 sq. ft	No
11	Breakfast Nook	13'5" x 8'10"	118 sq. ft	Yes

Home data report

2159 Cypress St,Longmont,CO,US

#		Dimensions	sqft	Counted as living area
12	Laundry	3'1" x 6'8"	20 sq. ft	Yes
13	W.I.C.	4'10" x 8'4"	41 sq. ft	Yes
14	Hall	10'5" x 8'9"	49 sq. ft	Yes
15	Primary Bath	10'0" x 4'11"	50 sq. ft	Yes
16	Kitchen	11'0" x 9'5"	103 sq. ft	Yes
17	Porch	8'2" x 5'4"	43 sq. ft	No
18	Dining Area	11'0" x 13'2"	149 sq. ft	Yes

1 Floor 1 - Foyer



Dimensions: 18'11" x 4'3"
Area: 75 sq. ft
Counted as living area: Yes

Heated: Yes
Finished: Yes
Enclosed: Yes
Contiguous: Yes
Permitted: Yes
Wet space: No
Addition: No
Conversion: No

2 Floor 1 - Living Room



Dimensions: 14'6" x 22'7"
Area: 320 sq. ft
Counted as living area: Yes

Heated: Yes
Finished: Yes
Enclosed: Yes
Contiguous: Yes
Permitted: Yes
Wet space: No
Addition: No
Conversion: No

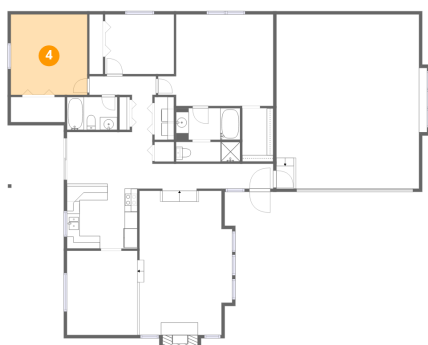
3 Floor 1 - Bath



Dimensions: 7'10" x 5'2"
Area: 40 sq. ft
Counted as living area: Yes

Heated: Yes
Finished: Yes
Enclosed: Yes
Contiguous: Yes
Permitted: Yes
Wet space: Yes
Addition: No
Conversion: No

4 Floor 1 - Bedroom



Dimensions: 12'0" x 12'7"
Area: 151 sq. ft
Counted as living area: Yes

Heated: Yes
Finished: Yes
Enclosed: Yes
Contiguous: Yes
Permitted: Yes
Wet space: No
Addition: No
Conversion: No

5 Floor 1 - Bath



Dimensions: 10'0" x 3'1"
Area: 31 sq. ft
Counted as living area: Yes

Heated: Yes
Finished: Yes
Enclosed: Yes
Contiguous: Yes
Permitted: Yes
Wet space: Yes
Addition: No
Conversion: No

6 Floor 1 - Covered Patio



Dimensions: 8'9" x 9'10"
Area: 86 sq. ft
Counted as living area: No

Heated: No
Finished: No
Enclosed: No
Contiguous: Yes
Permitted: Yes
Wet space: No
Addition: No
Conversion: No

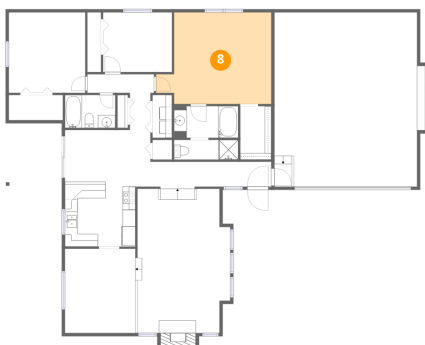
7 Floor 1 - W.I.C.



Dimensions: 8'6" x 3'11"
Area: 33 sq. ft
Counted as living area: Yes

Heated: Yes
Finished: Yes
Enclosed: Yes
Contiguous: Yes
Permitted: Yes
Wet space: No
Addition: No
Conversion: No

8 Floor 1 - Primary Bedroom



Dimensions: 18'0" x 14'4"
Area: 226 sq. ft
Counted as living area: Yes

Heated: Yes
Finished: Yes
Enclosed: Yes
Contiguous: Yes
Permitted: Yes
Wet space: No
Addition: No
Conversion: No

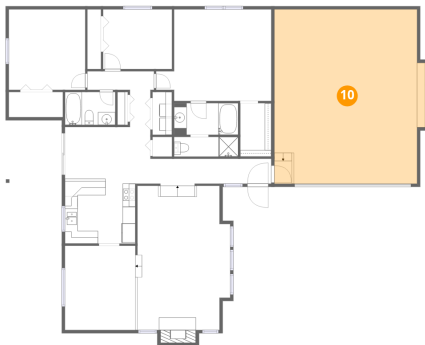
9 Floor 1 - Bedroom



Dimensions: 10'9" x 9'4"
Area: 101 sq. ft
Counted as living area: Yes

Heated: Yes
Finished: Yes
Enclosed: Yes
Contiguous: Yes
Permitted: Yes
Wet space: No
Addition: No
Conversion: No

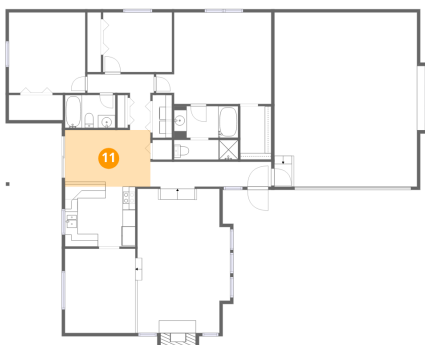
10 Floor 1 - Garage



Dimensions: 22'4" x 27'3"
Area: 621 sq. ft
Counted as living area: No

Heated: No
Finished: No
Enclosed: Yes
Contiguous: Yes
Permitted: Yes
Wet space: No
Addition: No
Conversion: No

11 Floor 1 - Breakfast Nook



Dimensions: 13'5" x 8'10"
Area: 118 sq. ft
Counted as living area: Yes

Heated: Yes
Finished: Yes
Enclosed: Yes
Contiguous: Yes
Permitted: Yes
Wet space: No
Addition: No
Conversion: No

12 Floor 1 - Laundry



Dimensions: 3'1" x 6'8"
Area: 20 sq. ft
Counted as living area: Yes

Heated: Yes
Finished: Yes
Enclosed: Yes
Contiguous: Yes
Permitted: Yes
Wet space: No
Addition: No
Conversion: No

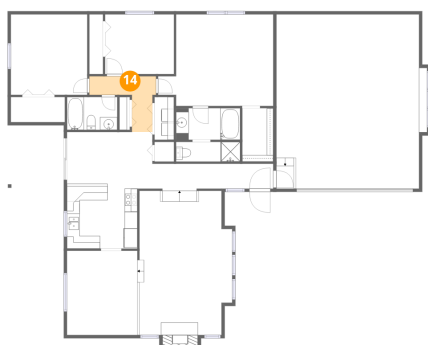
13 Floor 1 - W.I.C.



Dimensions: 4'10" x 8'4"
Area: 41 sq. ft
Counted as living area: Yes

Heated: Yes
Finished: Yes
Enclosed: Yes
Contiguous: Yes
Permitted: Yes
Wet space: No
Addition: No
Conversion: No

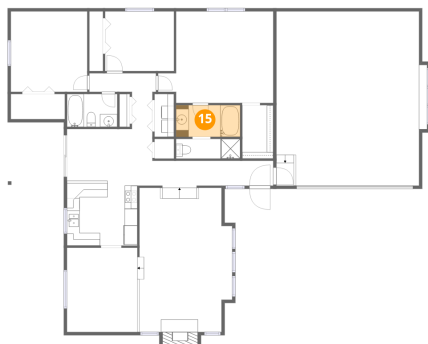
14 Floor 1 - Hall



Dimensions: 10'5" x 8'9"
Area: 49 sq. ft
Counted as living area: Yes

Heated: Yes
Finished: Yes
Enclosed: Yes
Contiguous: Yes
Permitted: Yes
Wet space: No
Addition: No
Conversion: No

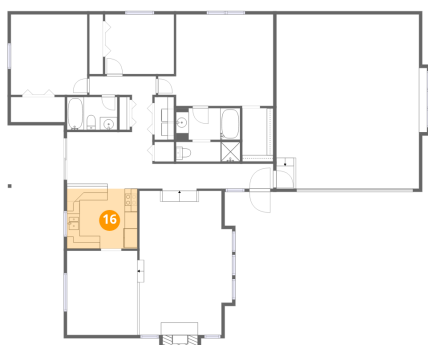
15 Floor 1 - Primary Bath



Dimensions: 10'0" x 4'11"
Area: 50 sq. ft
Counted as living area: Yes

Heated: Yes
Finished: Yes
Enclosed: Yes
Contiguous: Yes
Permitted: Yes
Wet space: Yes
Addition: No
Conversion: No

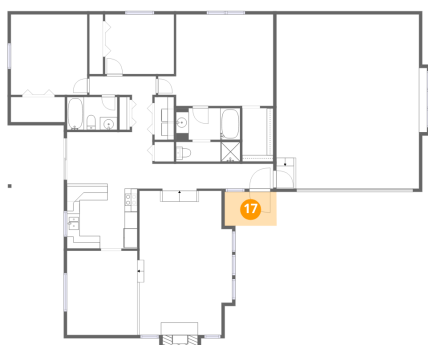
16 Floor 1 - Kitchen



Dimensions: 11'0" x 9'5"
Area: 103 sq. ft
Counted as living area: Yes

Heated: Yes
Finished: Yes
Enclosed: Yes
Contiguous: Yes
Permitted: Yes
Wet space: No
Addition: No
Conversion: No

17 Floor 1 - Porch



Dimensions: 8'2" x 5'4"
Area: 43 sq. ft
Counted as living area: No

Heated: No
Finished: No
Enclosed: No
Contiguous: Yes
Permitted: Yes
Wet space: No
Addition: No
Conversion: No

18 Floor 1 - Dining Area



Dimensions: 11'0" x 13'2"
Area: 149 sq. ft
Counted as living area: Yes

Heated: Yes
Finished: Yes
Enclosed: Yes
Contiguous: Yes
Permitted: Yes
Wet space: No
Addition: No
Conversion: No