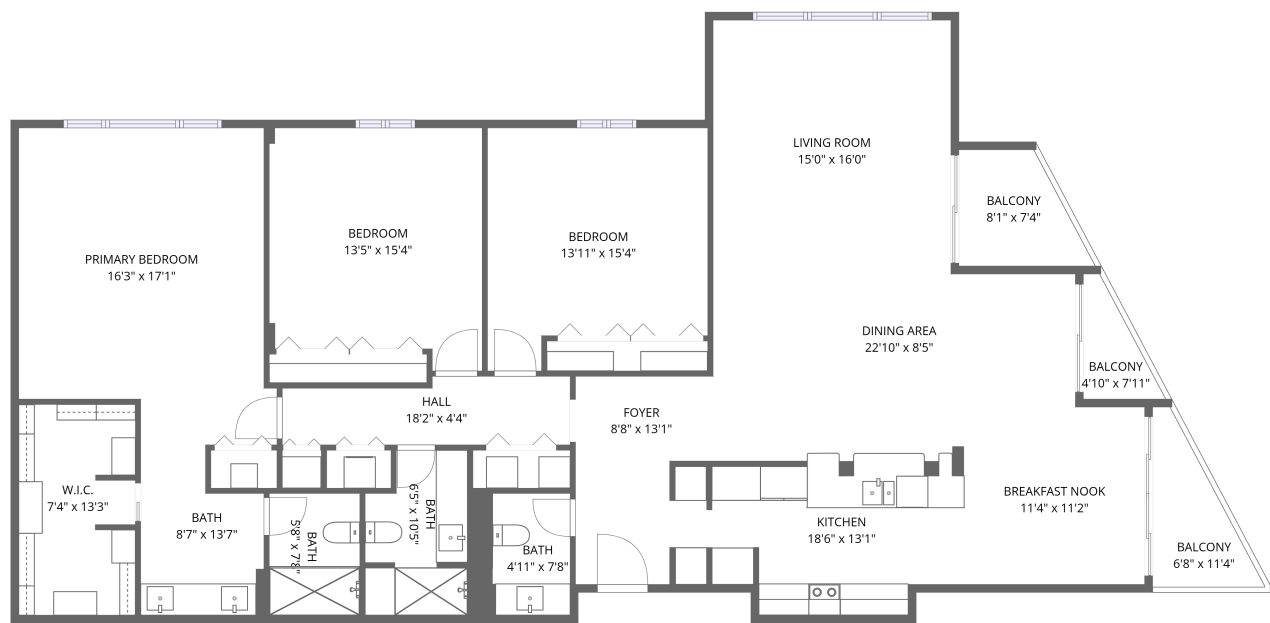


Home data report

634 Edgewater Drive, Dunedin Marina, Dunedin, Pinellas County,
Florida, United States, 34698, 444



1st floor

Total Area: 2078 sq. ft
1st Floor: 2078 sq. ft
Excluded: Balcony 119 sq. ft, Walls: 0 sq. ft

Property summary

 **1** Floors

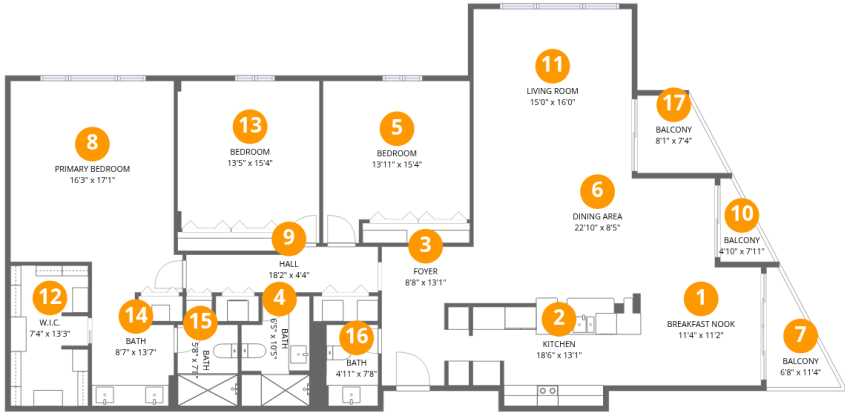
 **3** Bedrooms

 **2** Bathrooms

 **1** Half baths

Home data report

634 Edgewater Drive, Dunedin Marina, Dunedin, Pinellas County, Florida, United States, 34698, 444



Room dimensions

Floor 1

Total:2078sqft Excluded: 119sqft

#		Dimensions	sqft	Counted as living area
1	Breakfast Nook	11'4" x 11'2"	127 sq. ft	Yes
2	Kitchen	18'6" x 13'1"	209 sq. ft	Yes
3	Foyer	8'8" x 13'1"	92 sq. ft	Yes
4	Bath	6'5" x 10'5"	66 sq. ft	Yes
5	Bedroom	13'11" x 15'4"	189 sq. ft	Yes
6	Dining Area	22'10" x 8'5"	191 sq. ft	Yes
7	Balcony	6'8" x 11'4"	47 sq. ft	No
8	Primary Bedroom	16'3" x 17'1"	265 sq. ft	Yes
9	Hall	18'2" x 4'4"	71 sq. ft	Yes
10	Balcony	4'10" x 7'11"	24 sq. ft	No
11	Living Room	15'0" x 16'0"	240 sq. ft	Yes

Home data report

634 Edgewater Drive, Dunedin Marina, Dunedin, Pinellas County, Florida, United States, 34698, 444

#		Dimensions	sqft	Counted as living area
12	W.I.C.	7'4" x 13'3"	96 sq. ft	Yes
13	Bedroom	13'5" x 15'4"	191 sq. ft	Yes
14	Bath	8'7" x 13'7"	97 sq. ft	Yes
15	Bath	5'8" x 7'8"	44 sq. ft	Yes
16	Bath	4'11" x 7'8"	41 sq. ft	Yes
17	Balcony	8'1" x 7'4"	49 sq. ft	No

1 Floor 1 - Breakfast Nook



Dimensions: 11'4" x 11'2"
Area: 127 sq. ft
Counted as living area: Yes

Heated: Yes
Finished: Yes
Enclosed: Yes
Contiguous: Yes
Permitted: Yes
Wet space: No
Addition: No
Conversion: No

2 Floor 1 - Kitchen

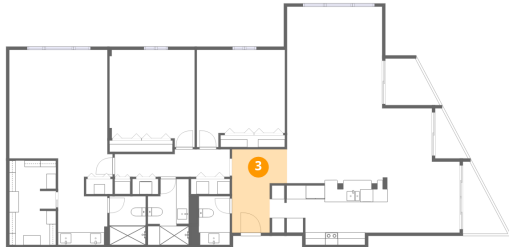


Dimensions: 18'6" x 13'1"
Area: 209 sq. ft
Counted as living area: Yes

Heated: Yes
Finished: Yes
Enclosed: Yes
Contiguous: Yes
Permitted: Yes
Wet space: No
Addition: No
Conversion: No

634 Edgewater Drive, Dunedin Marina, Dunedin, Pinellas County,
Florida, United States, 34698, 444

3 Floor 1 - Foyer



Dimensions: 8'8" x 13'1"
Area: 92 sq. ft
Counted as living area: Yes

Heated: Yes
Finished: Yes
Enclosed: Yes
Contiguous: Yes
Permitted: Yes
Wet space: No
Addition: No
Conversion: No

4 Floor 1 - Bath



Dimensions: 6'5" x 10'5"
Area: 66 sq. ft
Counted as living area: Yes

Heated: Yes
Finished: Yes
Enclosed: Yes
Contiguous: Yes
Permitted: Yes
Wet space: Yes
Addition: No
Conversion: No

5 Floor 1 - Bedroom



Dimensions: 13'11" x 15'4"
Area: 189 sq. ft
Counted as living area: Yes

Heated: Yes
Finished: Yes
Enclosed: Yes
Contiguous: Yes
Permitted: Yes
Wet space: No
Addition: No
Conversion: No

634 Edgewater Drive, Dunedin Marina, Dunedin, Pinellas County, Florida, United States, 34698, 444

6 Floor 1 - Dining Area



Dimensions: 22'10" x 8'5"
Area: 191 sq. ft
Counted as living area: Yes

Heated: Yes
Finished: Yes
Enclosed: Yes
Contiguous: Yes
Permitted: Yes
Wet space: No
Addition: No
Conversion: No

7 Floor 1 - Balcony



Dimensions: 6'8" x 11'4"
Area: 47 sq. ft
Counted as living area: No

Heated: No
Finished: No
Enclosed: No
Contiguous: Yes
Permitted: Yes
Wet space: No
Addition: No
Conversion: No

8 Floor 1 - Primary Bedroom

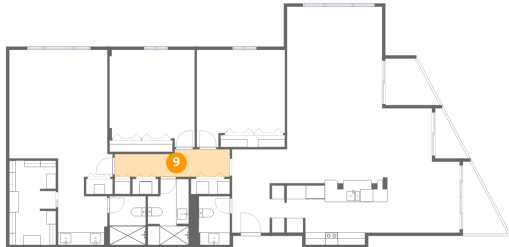


Dimensions: 16'3" x 17'1"
Area: 265 sq. ft
Counted as living area: Yes

Heated: Yes
Finished: Yes
Enclosed: Yes
Contiguous: Yes
Permitted: Yes
Wet space: No
Addition: No
Conversion: No

634 Edgewater Drive, Dunedin Marina, Dunedin, Pinellas County,
Florida, United States, 34698, 444

9 Floor 1 - Hall



Dimensions: 18'2" x 4'4"
Area: 71 sq. ft
Counted as living area: Yes

Heated: Yes
Finished: Yes
Enclosed: Yes
Contiguous: Yes
Permitted: Yes
Wet space: No
Addition: No
Conversion: No

10 Floor 1 - Balcony



Dimensions: 4'10" x 7'11"
Area: 24 sq. ft
Counted as living area: No

Heated: No
Finished: No
Enclosed: No
Contiguous: Yes
Permitted: Yes
Wet space: No
Addition: No
Conversion: No

11 Floor 1 - Living Room



Dimensions: 15'0" x 16'0"
Area: 240 sq. ft
Counted as living area: Yes

Heated: Yes
Finished: Yes
Enclosed: Yes
Contiguous: Yes
Permitted: Yes
Wet space: No
Addition: No
Conversion: No

12 Floor 1 - W.I.C.



Dimensions: 7'4" x 13'3"
Area: 96 sq. ft
Counted as living area: Yes

Heated: Yes
Finished: Yes
Enclosed: Yes
Contiguous: Yes
Permitted: Yes
Wet space: No
Addition: No
Conversion: No

13 Floor 1 - Bedroom



Dimensions: 13'5" x 15'4"
Area: 191 sq. ft
Counted as living area: Yes

Heated: Yes
Finished: Yes
Enclosed: Yes
Contiguous: Yes
Permitted: Yes
Wet space: No
Addition: No
Conversion: No

14 Floor 1 - Bath



Dimensions: 8'7" x 13'7"
Area: 97 sq. ft
Counted as living area: Yes

Heated: Yes
Finished: Yes
Enclosed: Yes
Contiguous: Yes
Permitted: Yes
Wet space: Yes
Addition: No
Conversion: No

15 Floor 1 - Bath



Dimensions: 5'8" x 7'8"
Area: 44 sq. ft
Counted as living area: Yes

Heated: Yes
Finished: Yes
Enclosed: Yes
Contiguous: Yes
Permitted: Yes
Wet space: Yes
Addition: No
Conversion: No

16 Floor 1 - Bath



Dimensions: 4'11" x 7'8"
Area: 41 sq. ft
Counted as living area: Yes

Heated: Yes
Finished: Yes
Enclosed: Yes
Contiguous: Yes
Permitted: Yes
Wet space: Yes
Addition: No
Conversion: No

17 Floor 1 - Balcony



Dimensions: 8'1" x 7'4"
Area: 49 sq. ft
Counted as living area: No

Heated: No
Finished: No
Enclosed: No
Contiguous: Yes
Permitted: Yes
Wet space: No
Addition: No
Conversion: No