



Total Area: 1740 sq. ft

1st Floor: 799 sq. ft, 2nd Floor: 941 sq. ft

Excluded: Deck 204 sq. ft, Porch 23 sq. ft, Garage 455 sq. ft, Fireplace 14 sq. ft, Open to below 161 sq. ft, Walls: 160 sq. ft


Property summary



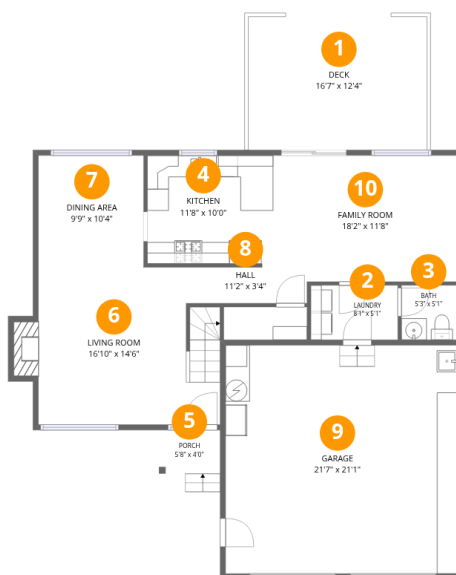
Home data report

101 Pettis Rd, Anchorage, AK, US



 **1**
Half baths

 **1**
Garages



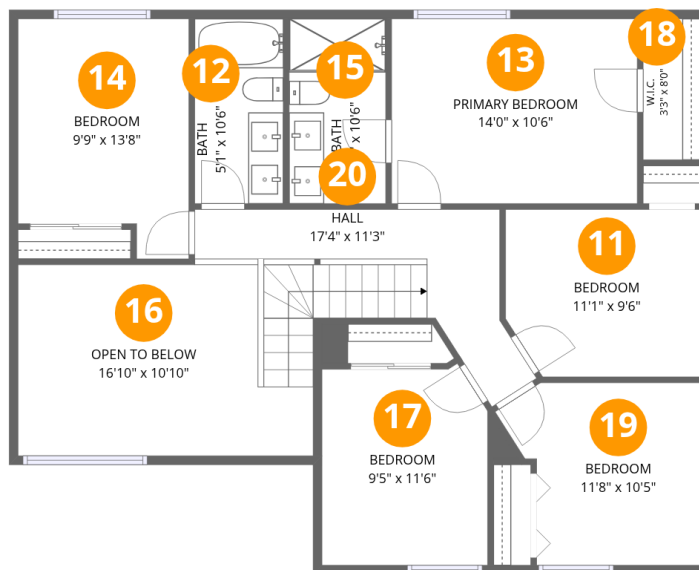
Room dimensions

Floor 1

Total: 799sqft

Excluded: 696sqft

#		Dimensions	sqft	Counted as living area
1	Deck	16'7" x 12'4"	204 sq. ft	No
2	Laundry	8'1" x 5'1"	41 sq. ft	Yes
3	Bath	5'3" x 5'1"	27 sq. ft	Yes
4	Kitchen	11'8" x 10'0"	112 sq. ft	Yes
5	Porch	5'8" x 4'0"	23 sq. ft	No
6	Living Room	16'10" x 14'6"	245 sq. ft	Yes
7	Dining Area	9'9" x 10'4"	101 sq. ft	Yes
8	Hall	11'2" x 3'4"	34 sq. ft	Yes
9	Garage	21'7" x 21'1"	455 sq. ft	No
10	Family Room	18'2" x 11'8"	204 sq. ft	Yes



Room dimensions

Floor 2

Total:941sqft

Excluded: 161sqft

#		Dimensions	sqft	Counted as living area
11	Bedroom	11'1" x 9'6"	102 sq. ft	Yes
12	Bath	5'1" x 10'6"	53 sq. ft	Yes
13	Primary Bedroom	14'0" x 10'6"	147 sq. ft	Yes
14	Bedroom	9'9" x 13'8"	120 sq. ft	Yes
15	Bath	5'6" x 10'6"	58 sq. ft	Yes
16	Open To Below	16'10" x 10'10"	161 sq. ft	No
17	Bedroom	9'5" x 11'6"	104 sq. ft	Yes
18	W.I.C.	3'3" x 8'0"	26 sq. ft	Yes
19	Bedroom	11'8" x 10'5"	103 sq. ft	Yes
20	Hall	17'4" x 11'3"	124 sq. ft	Yes



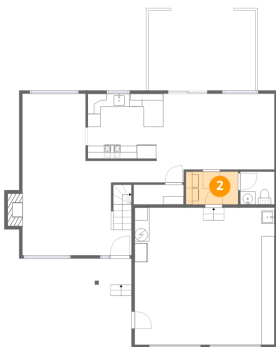
1 Floor 1 - Deck



Dimensions: 16'7" x 12'4"
Area: 204 sq. ft
Counted as living area: No

Heated: No
Finished: No
Enclosed: No
Contiguous: Yes
Permitted: Yes
Wet space: No
Addition: No
Conversion: No

2 Floor 1 - Laundry



Dimensions: 8'1" x 5'1"
Area: 41 sq. ft
Counted as living area: Yes

Heated: Yes
Finished: Yes
Enclosed: Yes
Contiguous: Yes
Permitted: Yes
Wet space: No
Addition: No
Conversion: No



3 Floor 1 - Bath



Dimensions: 5'3" x 5'1"
Area: 27 sq. ft
Counted as living area: Yes

Heated: Yes
Finished: Yes
Enclosed: Yes
Contiguous: Yes
Permitted: Yes
Wet space: Yes
Addition: No
Conversion: No

4 Floor 1 - Kitchen



Dimensions: 11'8" x 10'0"
Area: 112 sq. ft
Counted as living area: Yes

Heated: Yes
Finished: Yes
Enclosed: Yes
Contiguous: Yes
Permitted: Yes
Wet space: No
Addition: No
Conversion: No

5 Floor 1 - Porch



Dimensions: 5'8" x 4'0"
Area: 23 sq. ft
Counted as living area: No

Heated: No
Finished: No
Enclosed: No
Contiguous: Yes
Permitted: Yes
Wet space: No
Addition: No
Conversion: No



6 Floor 1 - Living Room



Dimensions: 16'10" x 14'6"
Area: 245 sq. ft
Counted as living area: Yes

Heated: Yes
Finished: Yes
Enclosed: Yes
Contiguous: Yes
Permitted: Yes
Wet space: No
Addition: No
Conversion: No

7 Floor 1 - Dining Area



Dimensions: 9'9" x 10'4"
Area: 101 sq. ft
Counted as living area: Yes

Heated: Yes
Finished: Yes
Enclosed: Yes
Contiguous: Yes
Permitted: Yes
Wet space: No
Addition: No
Conversion: No

8 Floor 1 - Hall



Dimensions: 11'2" x 3'4"
Area: 34 sq. ft
Counted as living area: Yes

Heated: Yes
Finished: Yes
Enclosed: Yes
Contiguous: Yes
Permitted: Yes
Wet space: No
Addition: No
Conversion: No



9 Floor 1 - Garage



Dimensions: 21'7" x 21'1"
Area: 455 sq. ft
Counted as living area: No

Heated: No
Finished: No
Enclosed: Yes
Contiguous: Yes
Permitted: Yes
Wet space: No
Addition: No
Conversion: No

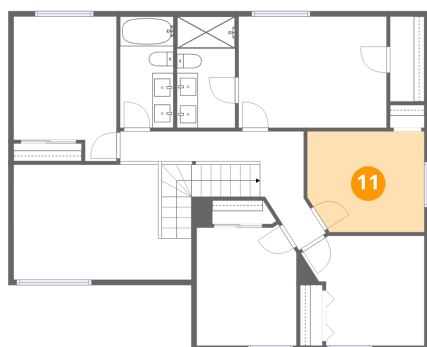
10 Floor 1 - Family Room



Dimensions: 18'2" x 11'8"
Area: 204 sq. ft
Counted as living area: Yes

Heated: Yes
Finished: Yes
Enclosed: Yes
Contiguous: Yes
Permitted: Yes
Wet space: No
Addition: No
Conversion: No

11 Floor 2 - Bedroom

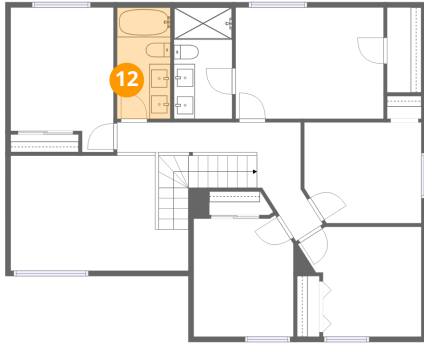


Dimensions: 11'1" x 9'6"
Area: 102 sq. ft
Counted as living area: Yes

Heated: Yes
Finished: Yes
Enclosed: Yes
Contiguous: Yes
Permitted: Yes
Wet space: No
Addition: No
Conversion: No



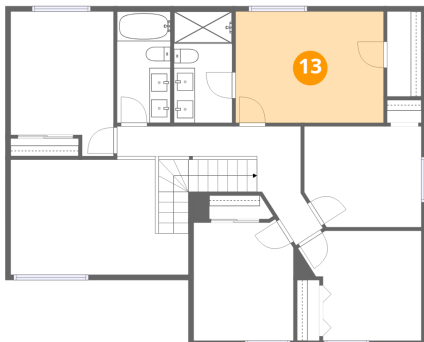
12 Floor 2 - Bath



Dimensions: 5'1" x 10'6"
Area: 53 sq. ft
Counted as living area: Yes

Heated: Yes
Finished: Yes
Enclosed: Yes
Contiguous: Yes
Permitted: Yes
Wet space: Yes
Addition: No
Conversion: No

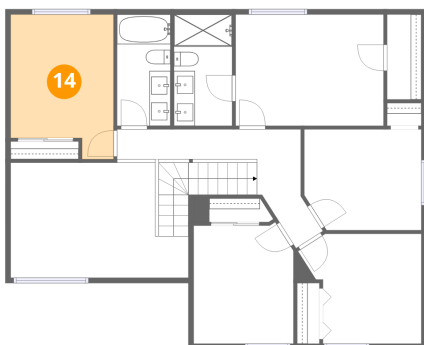
13 Floor 2 - Primary Bedroom



Dimensions: 14'0" x 10'6"
Area: 147 sq. ft
Counted as living area: Yes

Heated: Yes
Finished: Yes
Enclosed: Yes
Contiguous: Yes
Permitted: Yes
Wet space: No
Addition: No
Conversion: No

14 Floor 2 - Bedroom



Dimensions: 9'9" x 13'8"
Area: 120 sq. ft
Counted as living area: Yes

Heated: Yes
Finished: Yes
Enclosed: Yes
Contiguous: Yes
Permitted: Yes
Wet space: No
Addition: No
Conversion: No



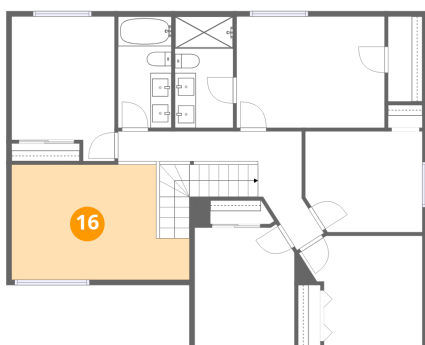
15 Floor 2 - Bath



Dimensions: 5'6" x 10'6"
Area: 58 sq. ft
Counted as living area: Yes

Heated: Yes
Finished: Yes
Enclosed: Yes
Contiguous: Yes
Permitted: Yes
Wet space: Yes
Addition: No
Conversion: No

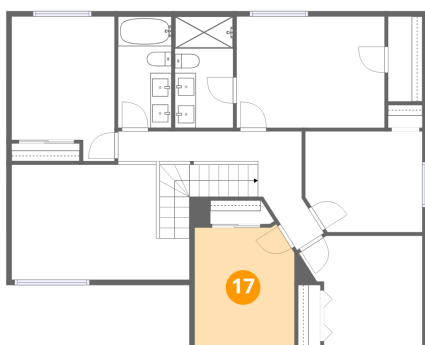
16 Floor 2 - Open To Below



Dimensions: 16'10" x 10'10"
Area: 161 sq. ft
Counted as living area: No

Heated: No
Finished: No
Enclosed: No
Contiguous: Yes
Permitted: No
Wet space: No
Addition: No
Conversion: No

17 Floor 2 - Bedroom



Dimensions: 9'5" x 11'6"
Area: 104 sq. ft
Counted as living area: Yes

Heated: Yes
Finished: Yes
Enclosed: Yes
Contiguous: Yes
Permitted: Yes
Wet space: No
Addition: No
Conversion: No



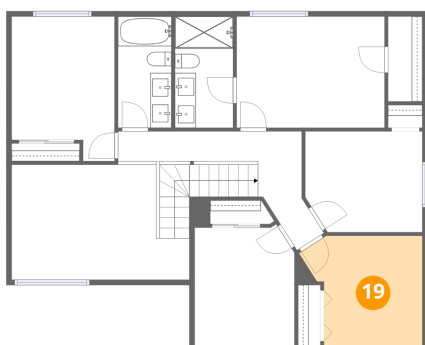
18 Floor 2 - W.I.C.



Dimensions: 3'3" x 8'0"
Area: 26 sq. ft
Counted as living area: Yes

Heated: Yes
Finished: Yes
Enclosed: Yes
Contiguous: Yes
Permitted: Yes
Wet space: No
Addition: No
Conversion: No

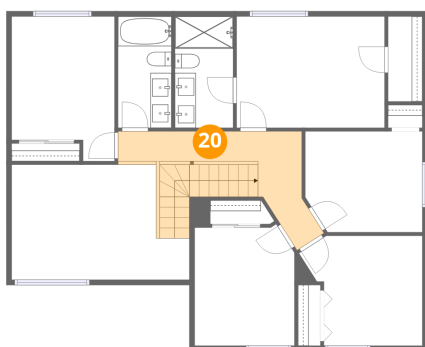
19 Floor 2 - Bedroom



Dimensions: 11'8" x 10'5"
Area: 103 sq. ft
Counted as living area: Yes

Heated: Yes
Finished: Yes
Enclosed: Yes
Contiguous: Yes
Permitted: Yes
Wet space: No
Addition: No
Conversion: No

20 Floor 2 - Hall



Dimensions: 17'4" x 11'3"
Area: 124 sq. ft
Counted as living area: Yes

Heated: Yes
Finished: Yes
Enclosed: Yes
Contiguous: Yes
Permitted: Yes
Wet space: No
Addition: No
Conversion: No