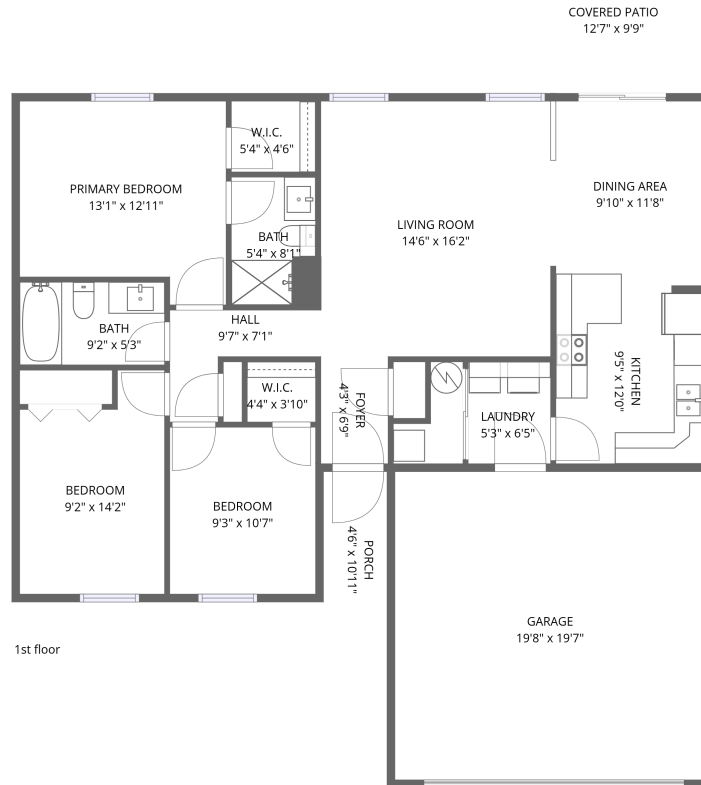


Home data report

1519 Counselor Row, Shelbyville, IN, US



Total Area: 1154 sq. ft

1st Floor: 1154 sq. ft

Excluded: Garage 385 sq. ft, Covered patio 123 sq. ft, Porch 45 sq. ft, Walls: 105 sq. ft

Property summary



1
Floors



3
Bedrooms



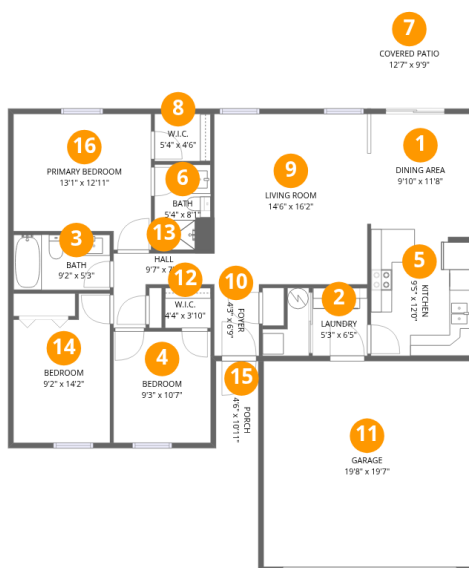
2
Bathrooms



1
Garages

Home data report

1519 Counselor Row, Shelbyville, IN, US



Room dimensions

Floor 1

Total: 1154sqft Excluded: 553sqft

#		Dimensions	sqft	Counted as living area
1	Dining Area	9'10" x 11'8"	110 sq. ft	Yes
2	Laundry	5'3" x 6'5"	34 sq. ft	Yes
3	Bath	9'2" x 5'3"	48 sq. ft	Yes
4	Bedroom	9'3" x 10'7"	98 sq. ft	Yes
5	Kitchen	9'5" x 12'0"	110 sq. ft	Yes
6	Bath	5'4" x 8'1"	43 sq. ft	Yes
7	Covered Patio	12'7" x 9'9"	123 sq. ft	No
8	W.I.C.	5'4" x 4'6"	24 sq. ft	Yes
9	Living Room	14'6" x 16'2"	236 sq. ft	Yes
10	Foyer	4'3" x 6'9"	29 sq. ft	Yes
11	Garage	19'8" x 19'7"	385 sq. ft	No

Home data report

1519 Counselor Row,Shelbyville,IN,US

#		Dimensions	sqft	Counted as living area
12	W.I.C.	4'4" x 3'10"	16 sq. ft	Yes
13	Hall	9'7" x 7'1"	41 sq. ft	Yes
14	Bedroom	9'2" x 14'2"	115 sq. ft	Yes
15	Porch	4'6" x 10'11"	45 sq. ft	No
16	Primary Bedroom	13'1" x 12'11"	152 sq. ft	Yes

1 Floor 1 - Dining Area



Dimensions: 9'10" x 11'8"
Area: 110 sq. ft
Counted as living area: Yes

Heated: Yes
Finished: Yes
Enclosed: Yes
Contiguous: Yes
Permitted: Yes
Wet space: No
Addition: No
Conversion: No

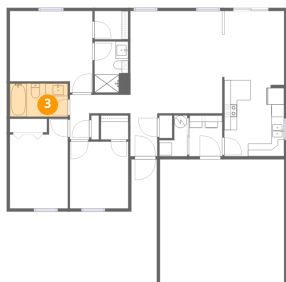
2 Floor 1 - Laundry



Dimensions: 5'3" x 6'5"
Area: 34 sq. ft
Counted as living area: Yes

Heated: Yes
Finished: Yes
Enclosed: Yes
Contiguous: Yes
Permitted: Yes
Wet space: No
Addition: No
Conversion: No

3 Floor 1 - Bath



Dimensions: 9'2" x 5'3"
Area: 48 sq. ft
Counted as living area: Yes

Heated: Yes
Finished: Yes
Enclosed: Yes
Contiguous: Yes
Permitted: Yes
Wet space: Yes
Addition: No
Conversion: No

4 Floor 1 - Bedroom



Dimensions: 9'3" x 10'7"
Area: 98 sq. ft
Counted as living area: Yes

Heated: Yes
Finished: Yes
Enclosed: Yes
Contiguous: Yes
Permitted: Yes
Wet space: No
Addition: No
Conversion: No

5 Floor 1 - Kitchen



Dimensions: 9'5" x 12'0"
Area: 110 sq. ft
Counted as living area: Yes

Heated: Yes
Finished: Yes
Enclosed: Yes
Contiguous: Yes
Permitted: Yes
Wet space: No
Addition: No
Conversion: No

6 Floor 1 - Bath



Dimensions: 5'4" x 8'1"
Area: 43 sq. ft
Counted as living area: Yes

Heated: Yes
Finished: Yes
Enclosed: Yes
Contiguous: Yes
Permitted: Yes
Wet space: Yes
Addition: No
Conversion: No

7 Floor 1 - Covered Patio



Dimensions: 12'7" x 9'9"
Area: 123 sq. ft
Counted as living area: No

Heated: No
Finished: No
Enclosed: No
Contiguous: Yes
Permitted: Yes
Wet space: No
Addition: No
Conversion: No

8 Floor 1 - W.I.C.



Dimensions: 5'4" x 4'6"
Area: 24 sq. ft
Counted as living area: Yes

Heated: Yes
Finished: Yes
Enclosed: Yes
Contiguous: Yes
Permitted: Yes
Wet space: No
Addition: No
Conversion: No

9 Floor 1 - Living Room



Dimensions: 14'6" x 16'2"
Area: 236 sq. ft
Counted as living area: Yes

Heated: Yes
Finished: Yes
Enclosed: Yes
Contiguous: Yes
Permitted: Yes
Wet space: No
Addition: No
Conversion: No

10 Floor 1 - Foyer



Dimensions: 4'3" x 6'9"
Area: 29 sq. ft
Counted as living area: Yes

Heated: Yes
Finished: Yes
Enclosed: Yes
Contiguous: Yes
Permitted: Yes
Wet space: No
Addition: No
Conversion: No

11 Floor 1 - Garage



Dimensions: 19'8" x 19'7"
Area: 385 sq. ft
Counted as living area: No

Heated: No
Finished: No
Enclosed: Yes
Contiguous: Yes
Permitted: Yes
Wet space: No
Addition: No
Conversion: No

12 Floor 1 - W.I.C.



Dimensions: 4'4" x 3'10"
Area: 16 sq. ft
Counted as living area: Yes

Heated: Yes
Finished: Yes
Enclosed: Yes
Contiguous: Yes
Permitted: Yes
Wet space: No
Addition: No
Conversion: No

13 Floor 1 - Hall



Dimensions: 9'7" x 7'1"
Area: 41 sq. ft
Counted as living area: Yes

Heated: Yes
Finished: Yes
Enclosed: Yes
Contiguous: Yes
Permitted: Yes
Wet space: No
Addition: No
Conversion: No

14 Floor 1 - Bedroom



Dimensions: 9'2" x 14'2"
Area: 115 sq. ft
Counted as living area: Yes

Heated: Yes
Finished: Yes
Enclosed: Yes
Contiguous: Yes
Permitted: Yes
Wet space: No
Addition: No
Conversion: No

15 Floor 1 - Porch



Dimensions: 4'6" x 10'11"
Area: 45 sq. ft
Counted as living area: No

Heated: No
Finished: No
Enclosed: No
Contiguous: Yes
Permitted: Yes
Wet space: No
Addition: No
Conversion: No

16 Floor 1 - Primary Bedroom



Dimensions: 13'1" x 12'11"
Area: 152 sq. ft
Counted as living area: Yes

Heated: Yes
Finished: Yes
Enclosed: Yes
Contiguous: Yes
Permitted: Yes
Wet space: No
Addition: No
Conversion: No