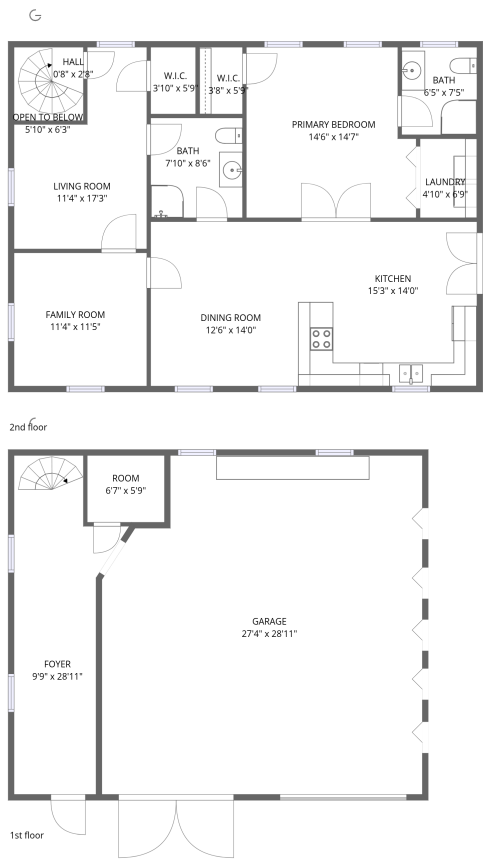


Home data report

4167 Spring Creek Way, Sevierville, Sevier County, Tennessee,
United States, 37876



Total Area: 1379 sq. ft

1st Floor: 243 sq. ft, 2nd Floor: 1136 sq. ft

Excluded: Garage 749 sq. ft, Open to below 7 sq. ft, Walls: 151 sq. ft

Property summary

 **2** Floors

 **1** Bedrooms

 **1** Bathrooms

Home data report

**4167 Spring Creek Way, Sevierville, Sevier County, Tennessee,
United States, 37876**



1
Half baths



1
Garages

Home data report

4167 Spring Creek Way, Sevierville, Sevier County, Tennessee,
United States, 37876



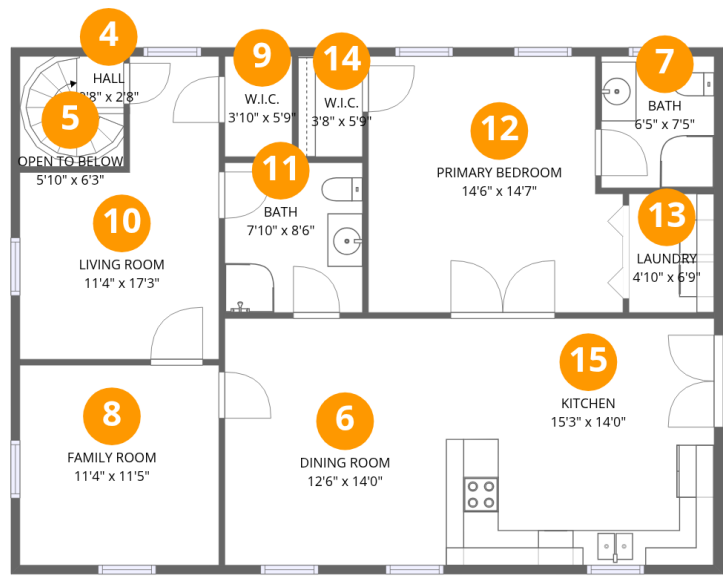
Room dimensions

Floor 1 Total:243sqft Excluded: 749sqft

#		Dimensions	sqft	Counted as living area
1	Room	6'7" x 5'9"	37 sq. ft	Yes
2	Foyer	9'9" x 28'11"	281 sq. ft	Yes
3	Garage	27'4" x 28'11"	791 sq. ft	No

Home data report

4167 Spring Creek Way, Sevierville, Sevier County, Tennessee,
United States, 37876



Room dimensions

Floor 2

Total:1136sqft Excluded: 7sqft

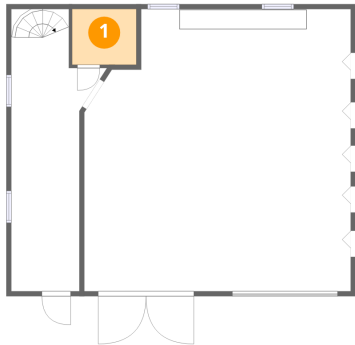
#		Dimensions	sqft	Counted as living area
4	Hall	0'8" x 2'8"	2 sq. ft	Yes
5	Open To Below	5'10" x 6'3"	37 sq. ft	No
6	Dining Room	12'6" x 14'0"	175 sq. ft	Yes
7	Bath	6'5" x 7'5"	48 sq. ft	Yes
8	Family Room	11'4" x 11'5"	129 sq. ft	Yes
9	W.I.C.	3'10" x 5'9"	22 sq. ft	Yes
10	Living Room	11'4" x 17'3"	195 sq. ft	Yes
11	Bath	7'10" x 8'6"	67 sq. ft	Yes
12	Primary Bedroom	14'6" x 14'7"	211 sq. ft	Yes
13	Laundry	4'10" x 6'9"	33 sq. ft	Yes
14	W.I.C.	3'8" x 5'9"	21 sq. ft	Yes

Home data report

4167 Spring Creek Way, Sevierville, Sevier County, Tennessee,
United States, 37876

#		Dimensions	sqft	Counted as living area
15	Kitchen	15'3" x 14'0"	214 sq. ft	Yes

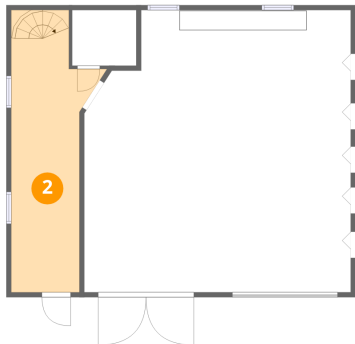
1 Floor 1 - Room



Dimensions: 6'7" x 5'9"
Area: 37 sq. ft
Counted as living area: Yes

Heated: Yes
Finished: Yes
Enclosed: Yes
Contiguous: Yes
Permitted: Yes
Wet space: No
Addition: No
Conversion: No

2 Floor 1 - Foyer

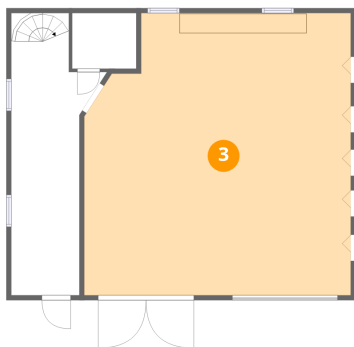


Dimensions: 9'9" x 28'11"
Area: 281 sq. ft
Counted as living area: Yes

Heated: Yes
Finished: Yes
Enclosed: Yes
Contiguous: Yes
Permitted: Yes
Wet space: No
Addition: No
Conversion: No

4167 Spring Creek Way, Sevierville, Sevier County, Tennessee,
United States, 37876

3 Floor 1 - Garage



Dimensions: 27'4" x 28'11"

Area: 791 sq. ft

Counted as living area: No

Heated: No

Finished: No

Enclosed: Yes

Contiguous: Yes

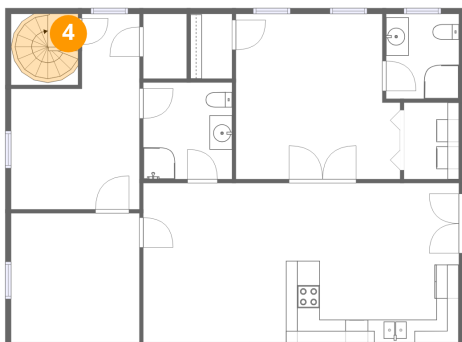
Permitted: Yes

Wet space: No

Addition: No

Conversion: No

4 Floor 2 - Hall



Dimensions: 0'8" x 2'8"

Area: 2 sq. ft

Counted as living area: Yes

Heated: Yes

Finished: Yes

Enclosed: Yes

Contiguous: Yes

Permitted: Yes

Wet space: No

Addition: No

Conversion: No

5 Floor 2 - Open To Below



Dimensions: 5'10" x 6'3"

Area: 37 sq. ft

Counted as living area: No

Heated: No

Finished: No

Enclosed: No

Contiguous: Yes

Permitted: No

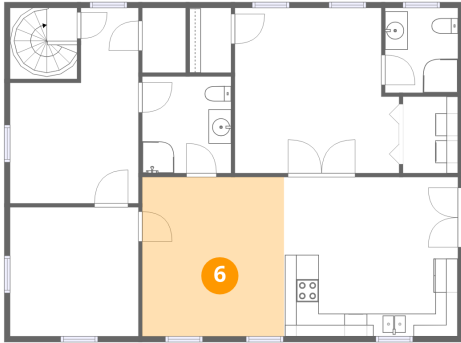
Wet space: No

Addition: No

Conversion: No

4167 Spring Creek Way, Sevierville, Sevier County, Tennessee,
United States, 37876

6 Floor 2 - Dining Room



Dimensions: 12'6" x 14'0"
Area: 175 sq. ft
Counted as living area: Yes

Heated: Yes
Finished: Yes
Enclosed: Yes
Contiguous: Yes
Permitted: Yes
Wet space: No
Addition: No
Conversion: No

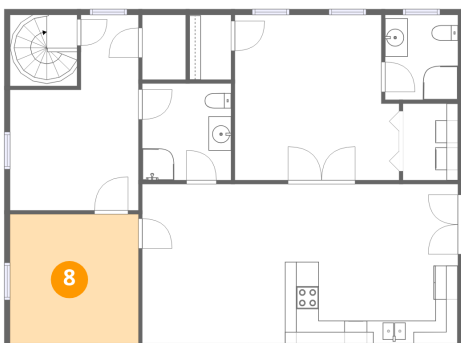
7 Floor 2 - Bath



Dimensions: 6'5" x 7'5"
Area: 48 sq. ft
Counted as living area: Yes

Heated: Yes
Finished: Yes
Enclosed: Yes
Contiguous: Yes
Permitted: Yes
Wet space: Yes
Addition: No
Conversion: No

8 Floor 2 - Family Room

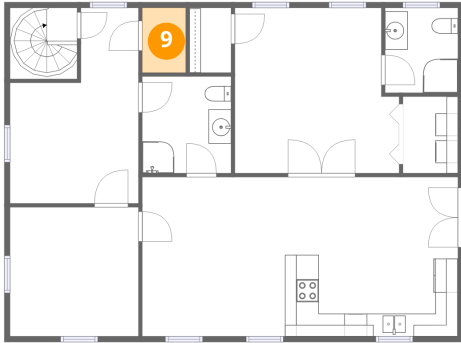


Dimensions: 11'4" x 11'5"
Area: 129 sq. ft
Counted as living area: Yes

Heated: Yes
Finished: Yes
Enclosed: Yes
Contiguous: Yes
Permitted: Yes
Wet space: No
Addition: No
Conversion: No

4167 Spring Creek Way, Sevierville, Sevier County, Tennessee,
United States, 37876

9 Floor 2 - W.I.C.



Dimensions: 3'10" x 5'9"
Area: 22 sq. ft
Counted as living area: Yes

Heated: Yes
Finished: Yes
Enclosed: Yes
Contiguous: Yes
Permitted: Yes
Wet space: No
Addition: No
Conversion: No

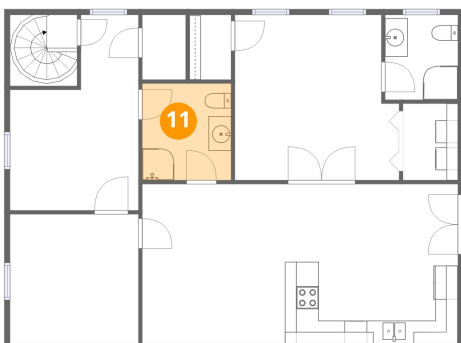
10 Floor 2 - Living Room



Dimensions: 11'4" x 17'3"
Area: 195 sq. ft
Counted as living area: Yes

Heated: Yes
Finished: Yes
Enclosed: Yes
Contiguous: Yes
Permitted: Yes
Wet space: No
Addition: No
Conversion: No

11 Floor 2 - Bath



Dimensions: 7'10" x 8'6"
Area: 67 sq. ft
Counted as living area: Yes

Heated: Yes
Finished: Yes
Enclosed: Yes
Contiguous: Yes
Permitted: Yes
Wet space: Yes
Addition: No
Conversion: No

4167 Spring Creek Way, Sevierville, Sevier County, Tennessee,
United States, 37876

12 Floor 2 - Primary Bedroom



Dimensions: 14'6" x 14'7"
Area: 211 sq. ft
Counted as living area: Yes

Heated: Yes
Finished: Yes
Enclosed: Yes
Contiguous: Yes
Permitted: Yes
Wet space: No
Addition: No
Conversion: No

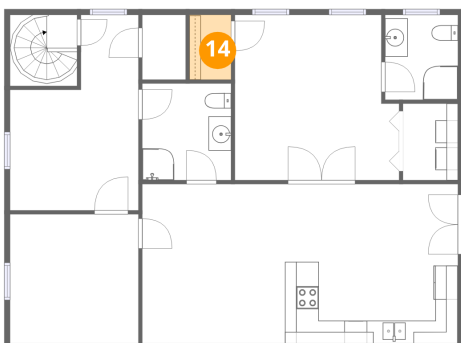
13 Floor 2 - Laundry



Dimensions: 4'10" x 6'9"
Area: 33 sq. ft
Counted as living area: Yes

Heated: Yes
Finished: Yes
Enclosed: Yes
Contiguous: Yes
Permitted: Yes
Wet space: No
Addition: No
Conversion: No

14 Floor 2 - W.I.C.

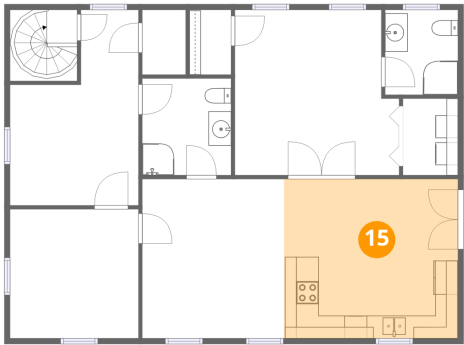


Dimensions: 3'8" x 5'9"
Area: 21 sq. ft
Counted as living area: Yes

Heated: Yes
Finished: Yes
Enclosed: Yes
Contiguous: Yes
Permitted: Yes
Wet space: No
Addition: No
Conversion: No

4167 Spring Creek Way, Sevierville, Sevier County, Tennessee,
United States, 37876

15 Floor 2 - Kitchen



Dimensions: 15'3" x 14'0"
Area: 214 sq. ft
Counted as living area: Yes

Heated: Yes
Finished: Yes
Enclosed: Yes
Contiguous: Yes
Permitted: Yes
Wet space: No
Addition: No
Conversion: No