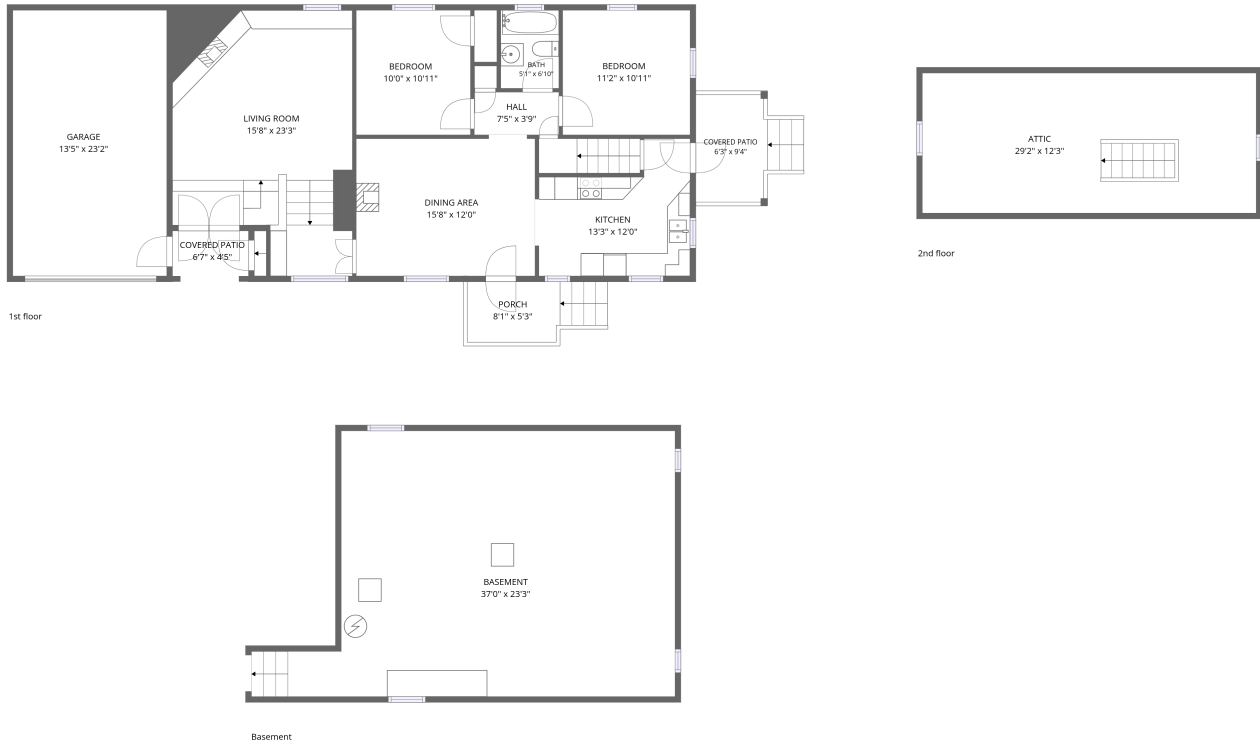


Home data report

2908 Loch Haven Drive, Roanoke, Roanoke County, Virginia,
United States, 24019



Total Area: 1019 sq. ft

Basement: 0 sq. ft, 1st Floor: 1019 sq. ft, 2nd Floor: 0 sq. ft

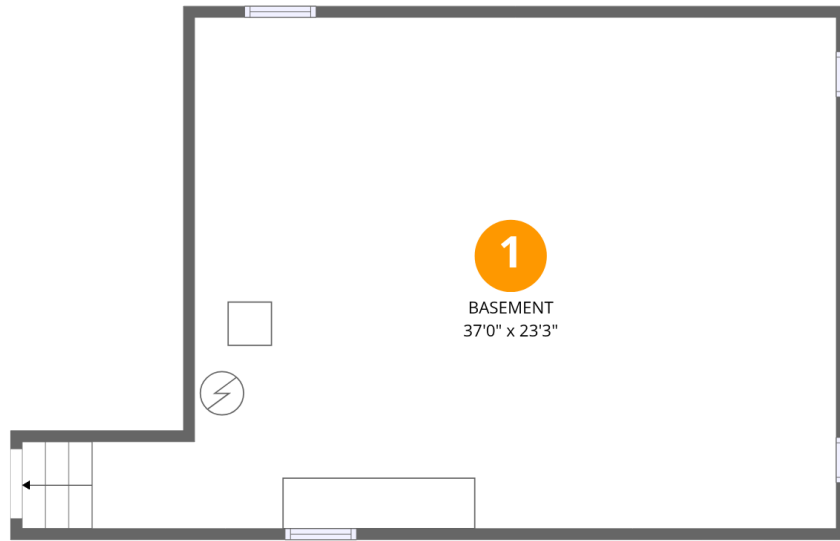
Excluded: Basement 709 sq. ft, Garage 312 sq. ft, Porch 58 sq. ft, Covered patio 101 sq. ft, Attic 357 sq. ft, Walls: 202 sq. ft

Property summary



Home data report

2908 Loch Haven Drive, Roanoke, Roanoke County, Virginia,
United States, 24019



Room dimensions

Floor 1 Below grade

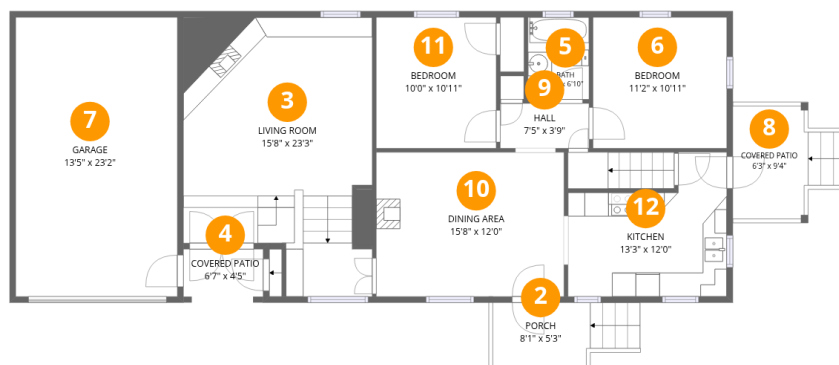
Total:0sqft

Excluded: 709sqft

#		Dimensions	sqft	Counted as living area
1	Basement	37'0" x 23'3"	709 sq. ft	No

Home data report

2908 Loch Haven Drive, Roanoke, Roanoke County, Virginia,
United States, 24019



Room dimensions

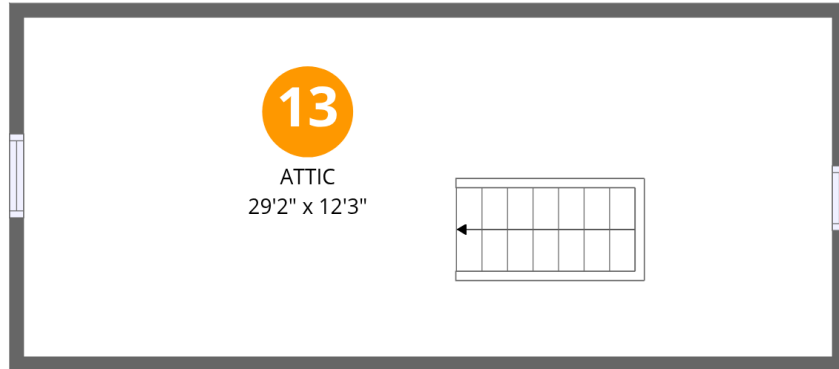
Floor 2

Total:1019sqft Excluded: 471sqft

#		Dimensions	sqft	Counted as living area
2	Porch	8'1" x 5'3"	58 sq. ft	No
3	Living Room	15'8" x 23'3"	318 sq. ft	Yes
4	Covered Patio	6'7" x 4'5"	30 sq. ft	No
5	Bath	5'1" x 6'10"	35 sq. ft	Yes
6	Bedroom	11'2" x 10'11"	121 sq. ft	Yes
7	Garage	13'5" x 23'2"	312 sq. ft	No
8	Covered Patio	6'3" x 9'4"	71 sq. ft	No
9	Hall	7'5" x 3'9"	28 sq. ft	Yes
10	Dining Area	15'8" x 12'0"	187 sq. ft	Yes
11	Bedroom	10'0" x 10'11"	109 sq. ft	Yes
12	Kitchen	13'3" x 12'0"	128 sq. ft	Yes

Home data report

2908 Loch Haven Drive, Roanoke, Roanoke County, Virginia,
United States, 24019



Room dimensions

Floor 3

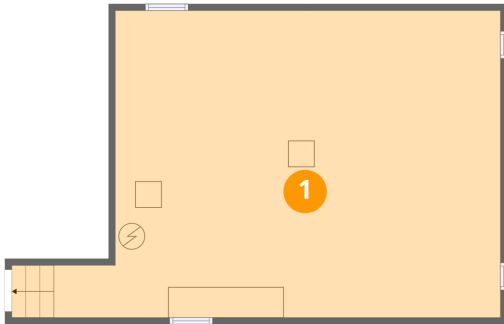
Total:0sqft

Excluded: 357sqft

#		Dimensions	sqft	Counted as living area
13	Attic	29'2" x 12'3"	357 sq. ft	No

2908 Loch Haven Drive, Roanoke, Roanoke County, Virginia,
United States, 24019

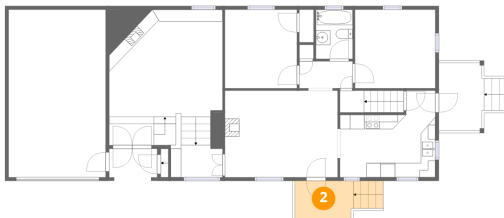
1 Floor 1 - Basement



Dimensions: 37'0" x 23'3"
Area: 709 sq. ft
Counted as living area: No

Heated: Yes
Finished: No
Enclosed: Yes
Contiguous: Yes
Permitted: Yes
Wet space: No
Addition: No
Conversion: No

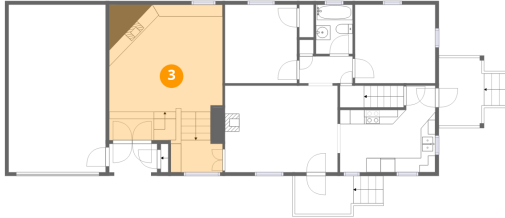
2 Floor 2 - Porch



Dimensions: 8'1" x 5'3"
Area: 58 sq. ft
Counted as living area: No

Heated: No
Finished: No
Enclosed: No
Contiguous: Yes
Permitted: Yes
Wet space: No
Addition: No
Conversion: No

3 Floor 2 - Living Room



Dimensions: 15'8" x 23'3"
Area: 318 sq. ft
Counted as living area: Yes

Heated: Yes
Finished: Yes
Enclosed: Yes
Contiguous: Yes
Permitted: Yes
Wet space: No
Addition: No
Conversion: No

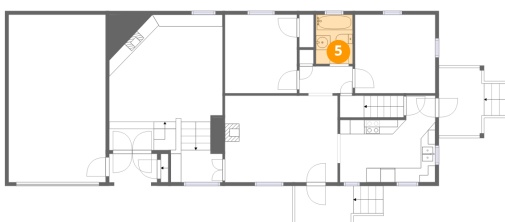
4 Floor 2 - Covered Patio



Dimensions: 6'7" x 4'5"
Area: 30 sq. ft
Counted as living area: No

Heated: No
Finished: No
Enclosed: No
Contiguous: Yes
Permitted: Yes
Wet space: No
Addition: No
Conversion: No

5 Floor 2 - Bath



Dimensions: 5'1" x 6'10"
Area: 35 sq. ft
Counted as living area: Yes

Heated: Yes
Finished: Yes
Enclosed: Yes
Contiguous: Yes
Permitted: Yes
Wet space: Yes
Addition: No
Conversion: No

6 Floor 2 - Bedroom



Dimensions: 11'2" x 10'11"
Area: 121 sq. ft
Counted as living area: Yes

Heated: Yes
Finished: Yes
Enclosed: Yes
Contiguous: Yes
Permitted: Yes
Wet space: No
Addition: No
Conversion: No

7 Floor 2 - Garage



Dimensions: 13'5" x 23'2"
Area: 312 sq. ft
Counted as living area: No

Heated: No
Finished: No
Enclosed: Yes
Contiguous: Yes
Permitted: Yes
Wet space: No
Addition: No
Conversion: No

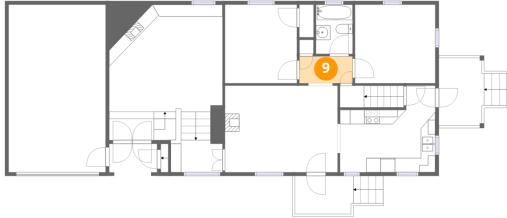
8 Floor 2 - Covered Patio



Dimensions: 6'3" x 9'4"
Area: 71 sq. ft
Counted as living area: No

Heated: No
Finished: No
Enclosed: No
Contiguous: Yes
Permitted: Yes
Wet space: No
Addition: No
Conversion: No

9 Floor 2 - Hall



Dimensions: 7'5" x 3'9"
Area: 28 sq. ft
Counted as living area: Yes

Heated: Yes
Finished: Yes
Enclosed: Yes
Contiguous: Yes
Permitted: Yes
Wet space: No
Addition: No
Conversion: No

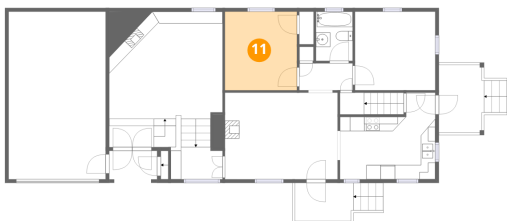
10 Floor 2 - Dining Area



Dimensions: 15'8" x 12'0"
Area: 187 sq. ft
Counted as living area: Yes

Heated: Yes
Finished: Yes
Enclosed: Yes
Contiguous: Yes
Permitted: Yes
Wet space: No
Addition: No
Conversion: No

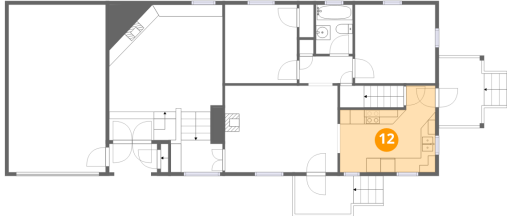
11 Floor 2 - Bedroom



Dimensions: 10'0" x 10'11"
Area: 109 sq. ft
Counted as living area: Yes

Heated: Yes
Finished: Yes
Enclosed: Yes
Contiguous: Yes
Permitted: Yes
Wet space: No
Addition: No
Conversion: No

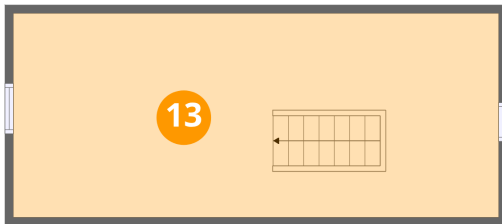
12 Floor 2 - Kitchen



Dimensions: 13'3" x 12'0"
Area: 128 sq. ft
Counted as living area: Yes

Heated: Yes
Finished: Yes
Enclosed: Yes
Contiguous: Yes
Permitted: Yes
Wet space: No
Addition: No
Conversion: No

13 Floor 3 - Attic



Dimensions: 29'2" x 12'3"
Area: 357 sq. ft
Counted as living area: No

Heated: No
Finished: No
Enclosed: Yes
Contiguous: Yes
Permitted: Yes
Wet space: No
Addition: No
Conversion: No