

Home data report

24 Jerome Avenue, Glen Rock, Bergen County, New Jersey,
United States, 07452




Total Area: 3120 sq. ft

Below Ground: 726 sq. ft, 1st Floor: 1158 sq. ft, 2nd Floor: 926 sq. ft, 3rd Floor: 310 sq. ft
Excluded: Laundry 164 sq. ft, Utility 32 sq. ft, Workshop 93 sq. ft, Storage 126 sq. ft, Porch 47 sq. ft, Deck 266 sq. ft, Low ceiling 470 sq. ft, Attic 124 sq. ft, Walls: 263 sq. ft

Property summary

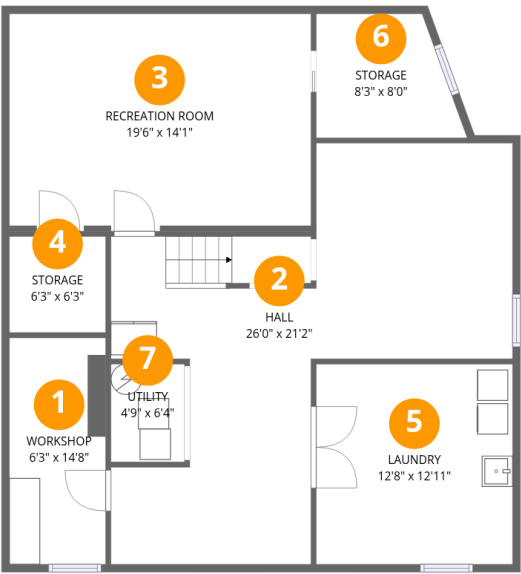
 **4** Floors

 **4** Bedrooms

 **2** Bathrooms

 **1** Half baths

24 Jerome Avenue, Glen Rock, Bergen County, New Jersey,
United States, 07452

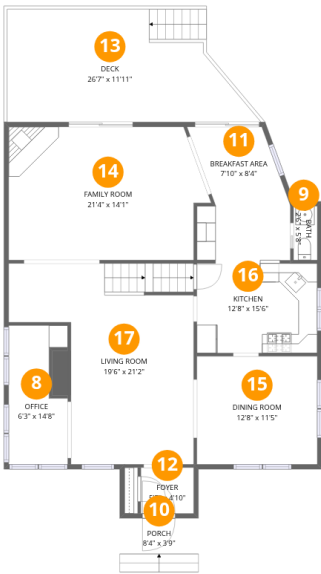


Room dimensions

Floor 1 Below grade Total:726sqft Excluded: 395sqft

#		Dimensions	sqft	Counted as living area
1	Workshop	6'3" x 14'8"	91 sq. ft	No
2	Hall	26'0" x 21'2"	415 sq. ft	Yes
3	Recreation Room	19'6" x 14'1"	274 sq. ft	Yes
4	Storage	6'3" x 6'3"	39 sq. ft	No
5	Laundry	12'8" x 12'11"	164 sq. ft	No
6	Storage	8'3" x 8'0"	67 sq. ft	No
7	Utility	4'9" x 6'4"	30 sq. ft	No

24 Jerome Avenue, Glen Rock, Bergen County, New Jersey,
United States, 07452

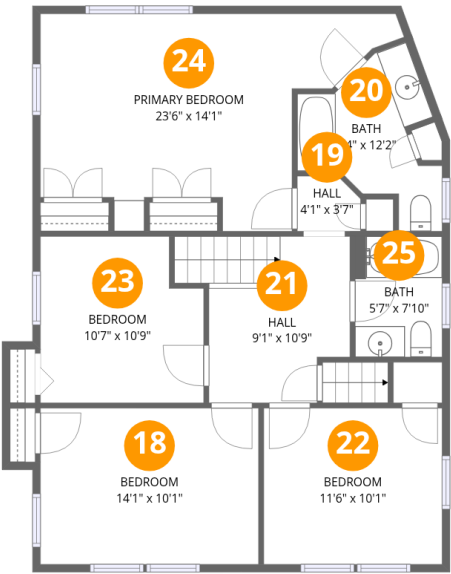


Room dimensions

Floor 2 Total:1158sqft Excluded: 313sqft

#		Dimensions	sqft	Counted as living area
8	Office	6'3" x 14'8"	81 sq. ft	Yes
9	Bath	2'6" x 5'8"	14 sq. ft	Yes
10	Porch	8'4" x 3'9"	47 sq. ft	No
11	Breakfast Area	7'10" x 8'4"	66 sq. ft	Yes
12	Foyer	5'7" x 4'10"	27 sq. ft	Yes
13	Deck	26'7" x 11'11"	266 sq. ft	No
14	Family Room	21'4" x 14'1"	277 sq. ft	Yes
15	Dining Room	12'8" x 11'5"	145 sq. ft	Yes
16	Kitchen	12'8" x 15'6"	179 sq. ft	Yes
17	Living Room	19'6" x 21'2"	313 sq. ft	Yes

24 Jerome Avenue, Glen Rock, Bergen County, New Jersey,
United States, 07452

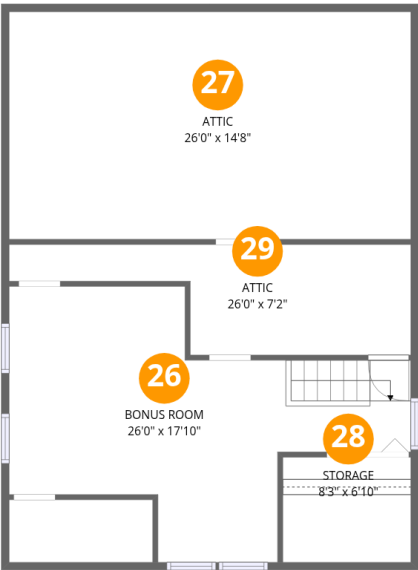


Room dimensions

Floor 3 Total:926sqft Excluded: 0sqft

#		Dimensions	sqft	Counted as living area
18	Bedroom	14'1" x 10'1"	142 sq. ft	Yes
19	Hall	4'1" x 3'7"	13 sq. ft	Yes
20	Bath	9'4" x 12'2"	66 sq. ft	Yes
21	Hall	9'1" x 10'9"	99 sq. ft	Yes
22	Bedroom	11'6" x 10'1"	116 sq. ft	Yes
23	Bedroom	10'7" x 10'9"	106 sq. ft	Yes
24	Primary Bedroom	23'6" x 14'1"	232 sq. ft	Yes
25	Bath	5'7" x 7'10"	44 sq. ft	Yes

24 Jerome Avenue, Glen Rock, Bergen County, New Jersey,
United States, 07452



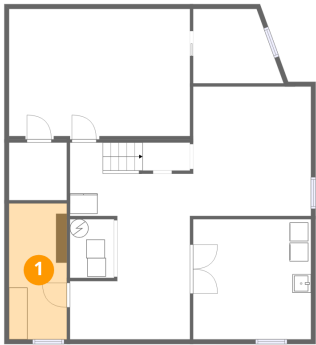
Room dimensions

Floor 4 Total:310sqft Excluded: 614sqft

#		Dimensions	sqft	Counted as living area
26	Bonus Room	26'0" x 17'10"	290 sq. ft	Yes
27	Attic	26'0" x 14'8"	124 sq. ft	No
28	Storage	8'3" x 6'10"	20 sq. ft	No
29	Attic	26'0" x 7'2"	130 sq. ft	No

24 Jerome Avenue, Glen Rock, Bergen County, New Jersey,
United States, 07452

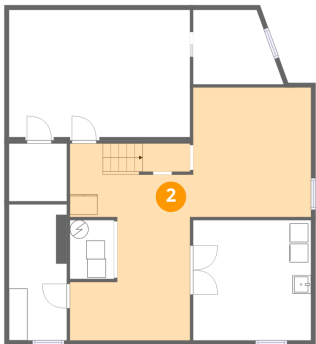
1 Floor 1 - Workshop



Dimensions: 6'3" x 14'8"
Area: 91 sq. ft
Counted as living area: No

Heated: No
Finished: No
Enclosed: Yes
Contiguous: No
Permitted: Yes
Wet space: No
Addition: No
Conversion: No

2 Floor 1 - Hall

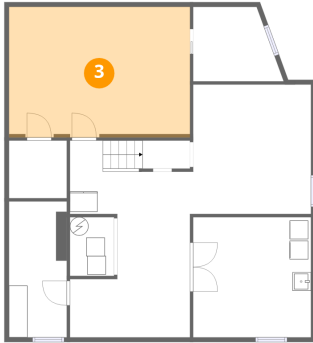


Dimensions: 26'0" x 21'2"
Area: 415 sq. ft
Counted as living area: Yes

Heated: Yes
Finished: Yes
Enclosed: Yes
Contiguous: Yes
Permitted: Yes
Wet space: No
Addition: No
Conversion: No

24 Jerome Avenue, Glen Rock, Bergen County, New Jersey,
United States, 07452

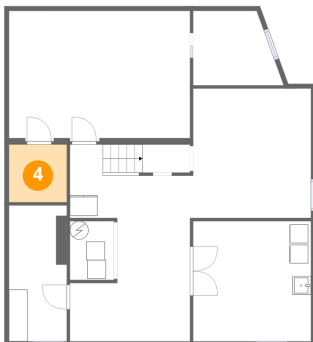
3 Floor 1 - Recreation Room



Dimensions: 19'6" x 14'1"
Area: 274 sq. ft
Counted as living area: No

Heated: Yes
Finished: Yes
Enclosed: Yes
Contiguous: No
Permitted: Yes
Wet space: No
Addition: No
Conversion: No

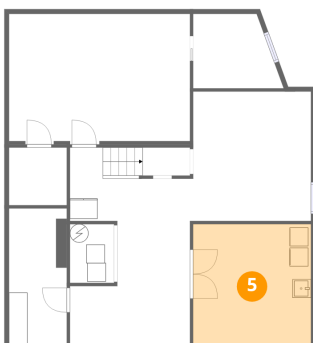
4 Floor 1 - Storage



Dimensions: 6'3" x 6'3"
Area: 39 sq. ft
Counted as living area: No

Heated: No
Finished: No
Enclosed: No
Contiguous: Yes
Permitted: Yes
Wet space: No
Addition: No
Conversion: No

5 Floor 1 - Laundry

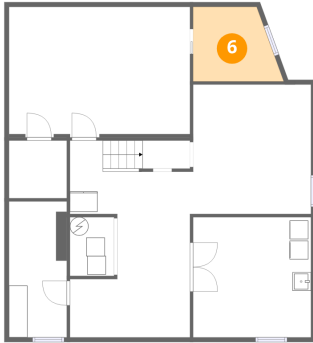


Dimensions: 12'8" x 12'11"
Area: 164 sq. ft
Counted as living area: No

Heated: Yes
Finished: No
Enclosed: Yes
Contiguous: Yes
Permitted: Yes
Wet space: No
Addition: No
Conversion: No

24 Jerome Avenue, Glen Rock, Bergen County, New Jersey,
United States, 07452

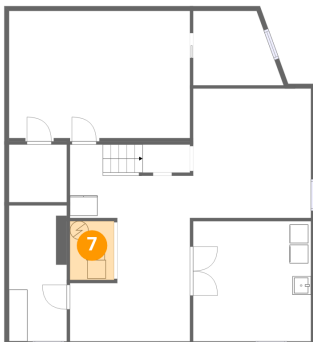
6 Floor 1 - Storage



Dimensions: 8'3" x 8'0"
Area: 67 sq. ft
Counted as living area: No

Heated: No
Finished: No
Enclosed: No
Contiguous: Yes
Permitted: Yes
Wet space: No
Addition: No
Conversion: No

7 Floor 1 - Utility



Dimensions: 4'9" x 6'4"
Area: 30 sq. ft
Counted as living area: No

Heated: Yes
Finished: No
Enclosed: Yes
Contiguous: Yes
Permitted: Yes
Wet space: No
Addition: No
Conversion: No

8 Floor 2 - Office



Dimensions: 6'3" x 14'8"
Area: 81 sq. ft
Counted as living area: Yes

Heated: Yes
Finished: Yes
Enclosed: Yes
Contiguous: Yes
Permitted: Yes
Wet space: No
Addition: No
Conversion: No

24 Jerome Avenue, Glen Rock, Bergen County, New Jersey,
United States, 07452

9 Floor 2 - Bath



Dimensions: 2'6" x 5'8"
Area: 14 sq. ft
Counted as living area: Yes

Heated: Yes
Finished: Yes
Enclosed: Yes
Contiguous: Yes
Permitted: Yes
Wet space: Yes
Addition: No
Conversion: No

10 Floor 2 - Porch



Dimensions: 8'4" x 3'9"
Area: 47 sq. ft
Counted as living area: No

Heated: No
Finished: No
Enclosed: No
Contiguous: Yes
Permitted: Yes
Wet space: No
Addition: No
Conversion: No

11 Floor 2 - Breakfast Area

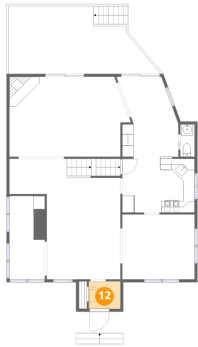


Dimensions: 7'10" x 8'4"
Area: 66 sq. ft
Counted as living area: Yes

Heated: Yes
Finished: Yes
Enclosed: Yes
Contiguous: Yes
Permitted: Yes
Wet space: No
Addition: No
Conversion: No

24 Jerome Avenue, Glen Rock, Bergen County, New Jersey,
United States, 07452

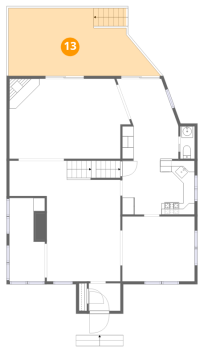
12 Floor 2 - Foyer



Dimensions: 5'7" x 4'10"
Area: 27 sq. ft
Counted as living area: Yes

Heated: Yes
Finished: Yes
Enclosed: Yes
Contiguous: Yes
Permitted: Yes
Wet space: No
Addition: No
Conversion: No

13 Floor 2 - Deck



Dimensions: 26'7" x 11'11"
Area: 266 sq. ft
Counted as living area: No

Heated: No
Finished: No
Enclosed: No
Contiguous: Yes
Permitted: Yes
Wet space: No
Addition: No
Conversion: No

14 Floor 2 - Family Room

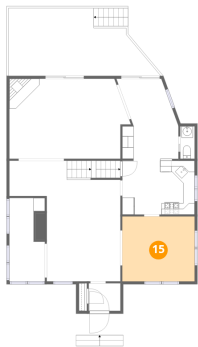


Dimensions: 21'4" x 14'1"
Area: 277 sq. ft
Counted as living area: Yes

Heated: Yes
Finished: Yes
Enclosed: Yes
Contiguous: Yes
Permitted: Yes
Wet space: No
Addition: No
Conversion: No

24 Jerome Avenue, Glen Rock, Bergen County, New Jersey,
United States, 07452

15 Floor 2 - Dining Room



Dimensions: 12'8" x 11'5"
Area: 145 sq. ft
Counted as living area: Yes

Heated: Yes
Finished: Yes
Enclosed: Yes
Contiguous: Yes
Permitted: Yes
Wet space: No
Addition: No
Conversion: No

16 Floor 2 - Kitchen



Dimensions: 12'8" x 15'6"
Area: 179 sq. ft
Counted as living area: Yes

Heated: Yes
Finished: Yes
Enclosed: Yes
Contiguous: Yes
Permitted: Yes
Wet space: No
Addition: No
Conversion: No

17 Floor 2 - Living Room

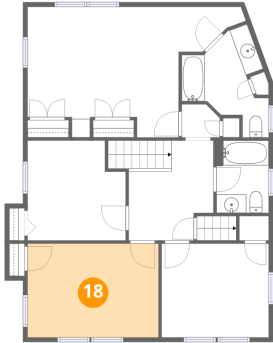


Dimensions: 19'6" x 21'2"
Area: 313 sq. ft
Counted as living area: Yes

Heated: Yes
Finished: Yes
Enclosed: Yes
Contiguous: Yes
Permitted: Yes
Wet space: No
Addition: No
Conversion: No

24 Jerome Avenue, Glen Rock, Bergen County, New Jersey,
United States, 07452

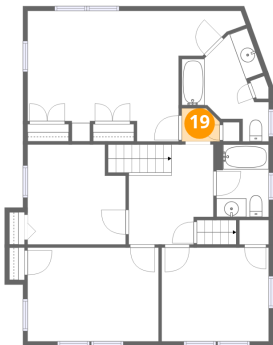
18 Floor 3 - Bedroom



Dimensions: 14'1" x 10'1"
Area: 142 sq. ft
Counted as living area: Yes

Heated: Yes
Finished: Yes
Enclosed: Yes
Contiguous: Yes
Permitted: Yes
Wet space: No
Addition: No
Conversion: No

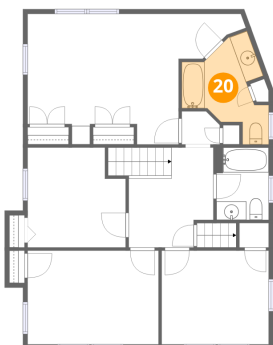
19 Floor 3 - Hall



Dimensions: 4'1" x 3'7"
Area: 13 sq. ft
Counted as living area: Yes

Heated: Yes
Finished: Yes
Enclosed: Yes
Contiguous: Yes
Permitted: Yes
Wet space: No
Addition: No
Conversion: No

20 Floor 3 - Bath



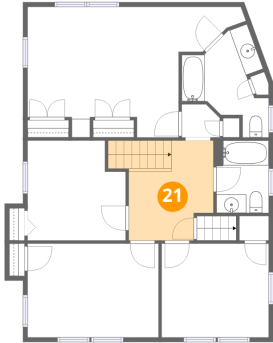
Dimensions: 9'4" x 12'2"
Area: 66 sq. ft
Counted as living area: Yes

Heated: Yes
Finished: Yes
Enclosed: Yes
Contiguous: Yes
Permitted: Yes
Wet space: Yes
Addition: No
Conversion: No

Home data report

24 Jerome Avenue, Glen Rock, Bergen County, New Jersey,
United States, 07452

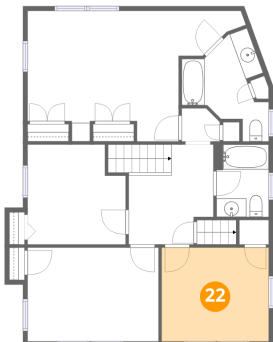
21 Floor 3 - Hall



Dimensions: 9'1" x 10'9"
Area: 99 sq. ft
Counted as living area: Yes

Heated: Yes
Finished: Yes
Enclosed: Yes
Contiguous: Yes
Permitted: Yes
Wet space: No
Addition: No
Conversion: No

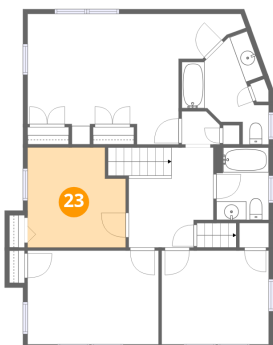
22 Floor 3 - Bedroom



Dimensions: 11'6" x 10'1"
Area: 116 sq. ft
Counted as living area: Yes

Heated: Yes
Finished: Yes
Enclosed: Yes
Contiguous: Yes
Permitted: Yes
Wet space: No
Addition: No
Conversion: No

23 Floor 3 - Bedroom

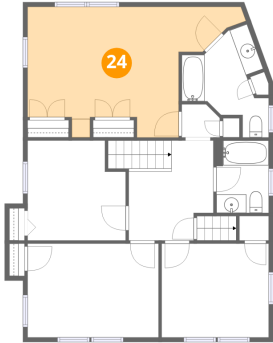


Dimensions: 10'7" x 10'9"
Area: 106 sq. ft
Counted as living area: Yes

Heated: Yes
Finished: Yes
Enclosed: Yes
Contiguous: Yes
Permitted: Yes
Wet space: No
Addition: No
Conversion: No

24 Jerome Avenue, Glen Rock, Bergen County, New Jersey,
United States, 07452

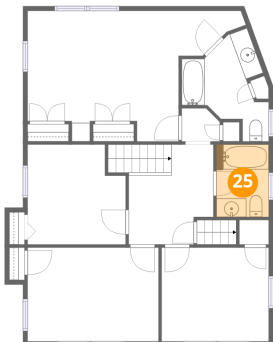
24 Floor 3 - Primary Bedroom



Dimensions: 23'6" x 14'1"
Area: 232 sq. ft
Counted as living area: Yes

Heated: Yes
Finished: Yes
Enclosed: Yes
Contiguous: Yes
Permitted: Yes
Wet space: No
Addition: No
Conversion: No

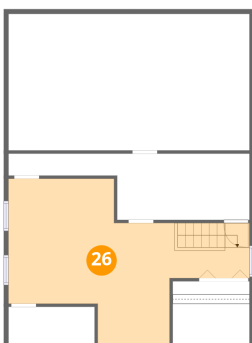
25 Floor 3 - Bath



Dimensions: 5'7" x 7'10"
Area: 44 sq. ft
Counted as living area: Yes

Heated: Yes
Finished: Yes
Enclosed: Yes
Contiguous: Yes
Permitted: Yes
Wet space: Yes
Addition: No
Conversion: No

26 Floor 4 - Bonus Room

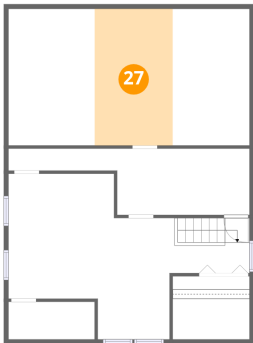


Dimensions: 26'0" x 17'10"
Area: 290 sq. ft
Counted as living area: Yes

Heated: Yes
Finished: Yes
Enclosed: Yes
Contiguous: Yes
Permitted: Yes
Wet space: No
Addition: No
Conversion: No

24 Jerome Avenue, Glen Rock, Bergen County, New Jersey,
United States, 07452

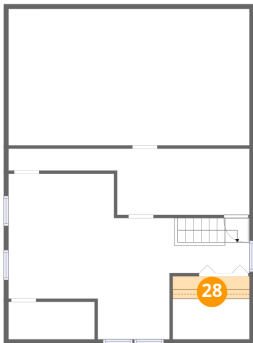
27 Floor 4 - Attic



Dimensions: 26'0" x 14'8"
Area: 124 sq. ft
Counted as living area: No

Heated: No
Finished: No
Enclosed: Yes
Contiguous: Yes
Permitted: Yes
Wet space: No
Addition: No
Conversion: No

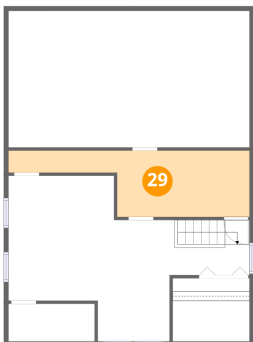
28 Floor 4 - Storage



Dimensions: 8'3" x 6'10"
Area: 20 sq. ft
Counted as living area: No

Heated: No
Finished: No
Enclosed: No
Contiguous: No
Permitted: Yes
Wet space: No
Addition: No
Conversion: No

29 Floor 4 - Attic



Dimensions: 26'0" x 7'2"
Area: 130 sq. ft
Counted as living area: No

Heated: No
Finished: No
Enclosed: Yes
Contiguous: Yes
Permitted: Yes
Wet space: No
Addition: No
Conversion: No