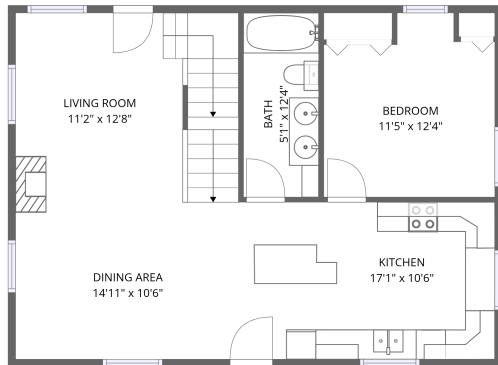
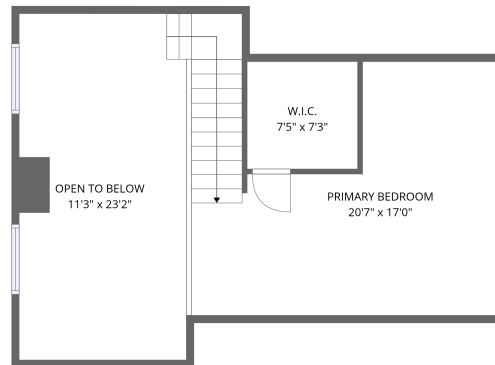


Home data report

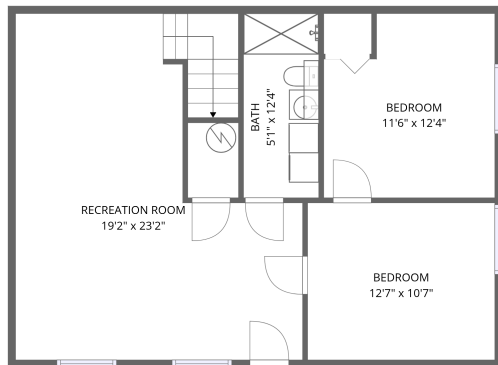
21180 Lookout Trail, Lead, SD, US



2nd floor



3rd floor



1st floor

Total Area: 1866 sq. ft

1st Floor: 747 sq. ft, 2nd Floor: 747 sq. ft, 3rd Floor: 372 sq. ft

Excluded: Open to below 257 sq. ft, Walls: 168 sq. ft

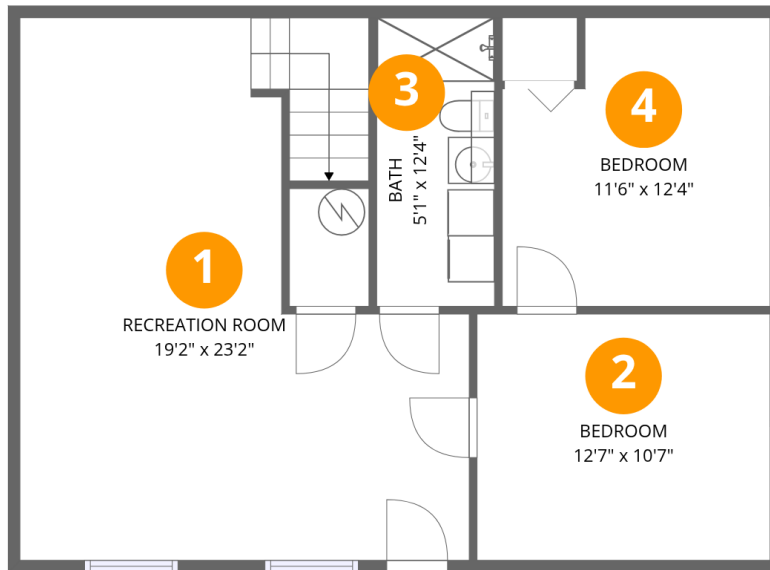
Property summary

 **3** Floors

 **4** Bedrooms

 **2** Bathrooms

21180 Lookout Trail,Lead,SD,US



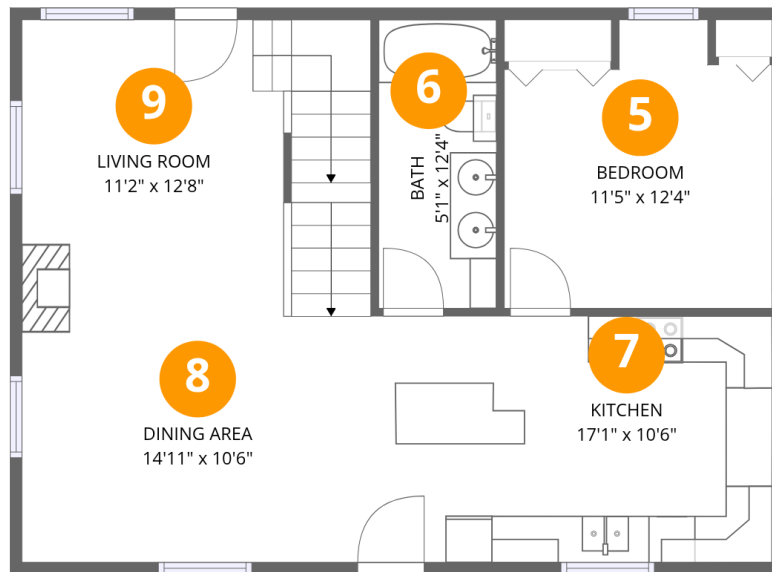
Room dimensions

Floor 1

Total:747sqft

Excluded: 0sqft

#		Dimensions	sqft	Counted as living area
1	Recreation Room	19'2" x 23'2"	370 sq. ft	Yes
2	Bedroom	12'7" x 10'7"	132 sq. ft	Yes
3	Bath	5'1" x 12'4"	62 sq. ft	Yes
4	Bedroom	11'6" x 12'4"	131 sq. ft	Yes



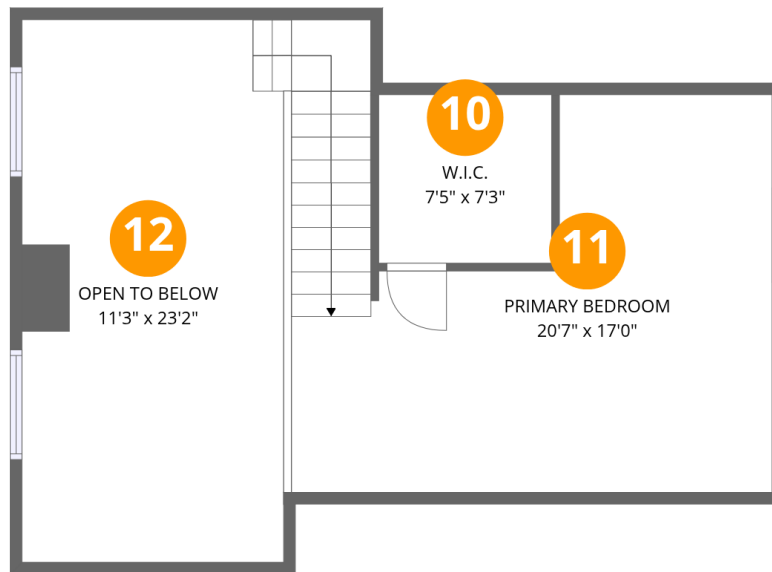
Room dimensions

Floor 2

Total:747sqft

Excluded: 0sqft

#		Dimensions	sqft	Counted as living area
5	Bedroom	11'5" x 12'4"	126 sq. ft	Yes
6	Bath	5'1" x 12'4"	62 sq. ft	Yes
7	Kitchen	17'1" x 10'6"	181 sq. ft	Yes
8	Dining Area	14'11" x 10'6"	158 sq. ft	Yes
9	Living Room	11'2" x 12'8"	190 sq. ft	Yes



Room dimensions

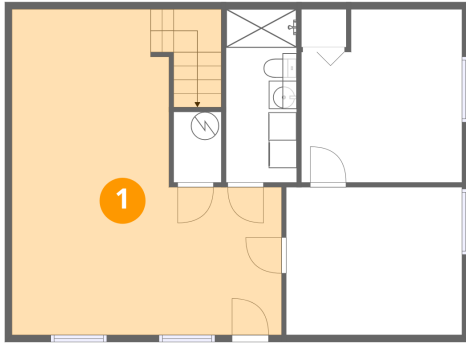
Floor 3

Total:372sqft

Excluded: 257sqft

#		Dimensions	sqft	Counted as living area
10	W.I.C.	7'5" x 7'3"	53 sq. ft	Yes
11	Primary Bedroom	20'7" x 17'0"	311 sq. ft	Yes
12	Open To Below	11'3" x 23'2"	257 sq. ft	No

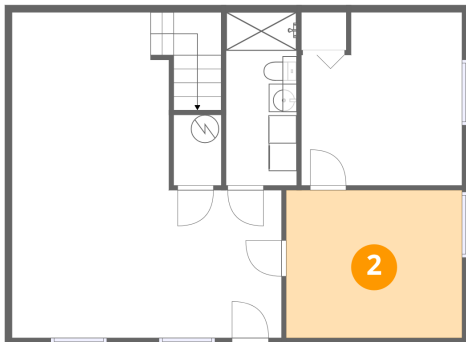
1 Floor 1 - Recreation Room



Dimensions: 19'2" x 23'2"
Area: 370 sq. ft
Counted as living area: Yes

Heated: Yes
Finished: Yes
Enclosed: Yes
Contiguous: Yes
Permitted: Yes
Wet space: No
Addition: No
Conversion: No

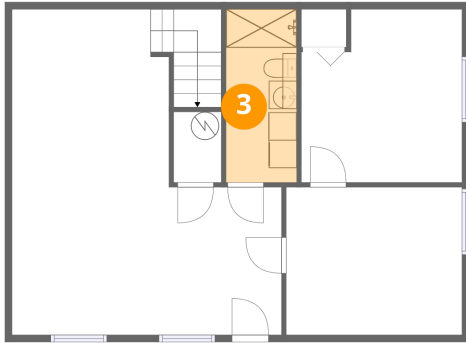
2 Floor 1 - Bedroom



Dimensions: 12'7" x 10'7"
Area: 132 sq. ft
Counted as living area: Yes

Heated: Yes
Finished: Yes
Enclosed: Yes
Contiguous: Yes
Permitted: Yes
Wet space: No
Addition: No
Conversion: No

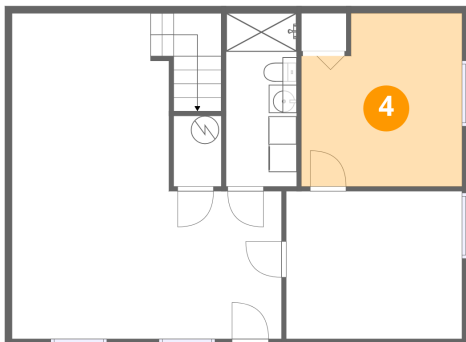
3 Floor 1 - Bath



Dimensions: 5'1" x 12'4"
Area: 62 sq. ft
Counted as living area: Yes

Heated: Yes
Finished: Yes
Enclosed: Yes
Contiguous: Yes
Permitted: Yes
Wet space: Yes
Addition: No
Conversion: No

4 Floor 1 - Bedroom



Dimensions: 11'6" x 12'4"
Area: 131 sq. ft
Counted as living area: Yes

Heated: Yes
Finished: Yes
Enclosed: Yes
Contiguous: Yes
Permitted: Yes
Wet space: No
Addition: No
Conversion: No

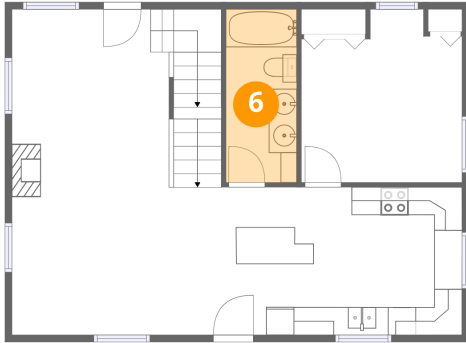
5 Floor 2 - Bedroom



Dimensions: 11'5" x 12'4"
Area: 126 sq. ft
Counted as living area: Yes

Heated: Yes
Finished: Yes
Enclosed: Yes
Contiguous: Yes
Permitted: Yes
Wet space: No
Addition: No
Conversion: No

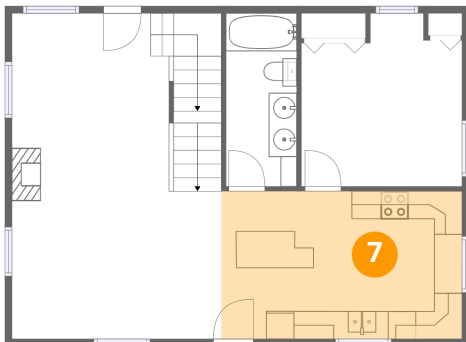
6 Floor 2 - Bath



Dimensions: 5'1" x 12'4"
Area: 62 sq. ft
Counted as living area: Yes

Heated: Yes
Finished: Yes
Enclosed: Yes
Contiguous: Yes
Permitted: Yes
Wet space: Yes
Addition: No
Conversion: No

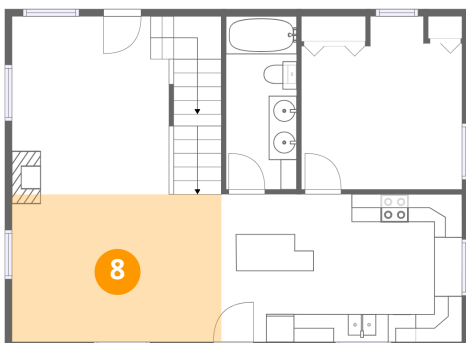
7 Floor 2 - Kitchen



Dimensions: 17'1" x 10'6"
Area: 181 sq. ft
Counted as living area: Yes

Heated: Yes
Finished: Yes
Enclosed: Yes
Contiguous: Yes
Permitted: Yes
Wet space: No
Addition: No
Conversion: No

8 Floor 2 - Dining Area



Dimensions: 14'11" x 10'6"
Area: 158 sq. ft
Counted as living area: Yes

Heated: Yes
Finished: Yes
Enclosed: Yes
Contiguous: Yes
Permitted: Yes
Wet space: No
Addition: No
Conversion: No

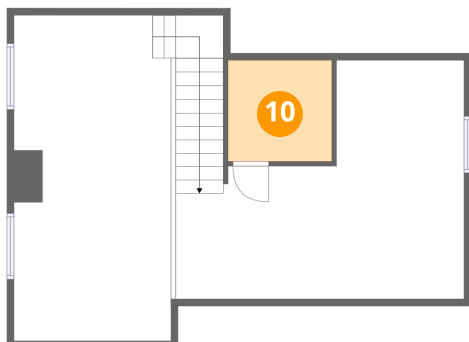
9 Floor 2 - Living Room



Dimensions: 11'2" x 12'8"
Area: 190 sq. ft
Counted as living area: Yes

Heated: Yes
Finished: Yes
Enclosed: Yes
Contiguous: Yes
Permitted: Yes
Wet space: No
Addition: No
Conversion: No

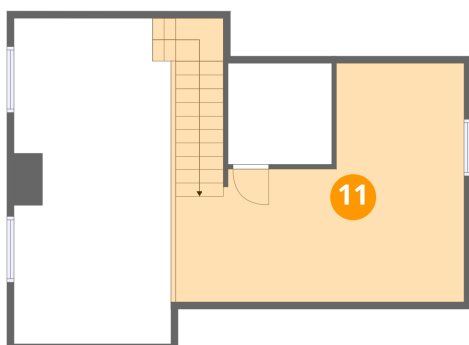
10 Floor 3 - W.I.C.



Dimensions: 7'5" x 7'3"
Area: 53 sq. ft
Counted as living area: No

Heated: Yes
Finished: Yes
Enclosed: Yes
Contiguous: No
Permitted: Yes
Wet space: No
Addition: No
Conversion: No

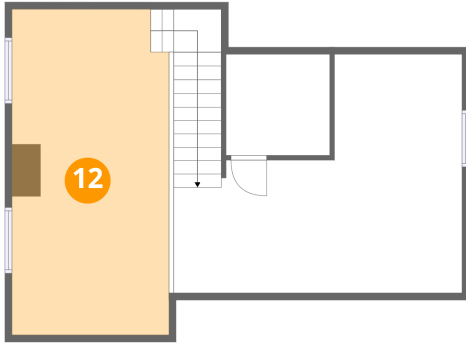
11 Floor 3 - Primary Bedroom



Dimensions: 20'7" x 17'0"
Area: 311 sq. ft
Counted as living area: No

Heated: Yes
Finished: Yes
Enclosed: Yes
Contiguous: No
Permitted: Yes
Wet space: No
Addition: No
Conversion: No

12 Floor 3 - Open To Below



Dimensions: 11'3" x 23'2"
Area: 257 sq. ft
Counted as living area: No

Heated: No
Finished: No
Enclosed: No
Contiguous: Yes
Permitted: No
Wet space: No
Addition: No
Conversion: No