

Home data report

3808 Park Lane Southwest, Roanoke, Virginia 24015, United States



Total Area: 4545 sq. ft

Basement 1: 1027 sq. ft, 1st Floor: 2656 sq. ft, 2nd Floor: 862 sq. ft

Excluded: Basement 738 sq. ft, Storage 146 sq. ft, Utility 242 sq. ft, Patio 2320 sq. ft, Porch 229 sq. ft, Garage 571 sq. ft, Walls: 336 sq. ft

Property summary

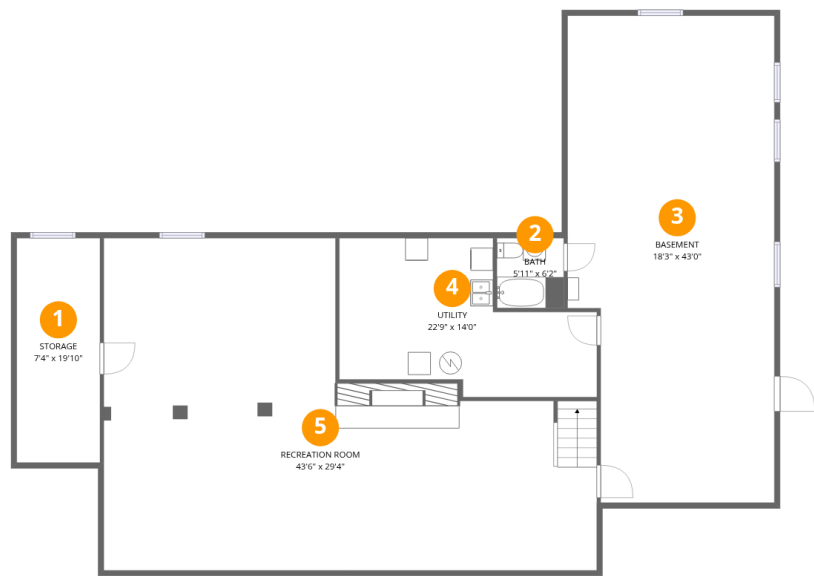
**3** Floors

**4** Bedrooms

**4** Bathrooms

**1** Garages

3808 Park Lane Southwest, Roanoke, Virginia 24015, United States



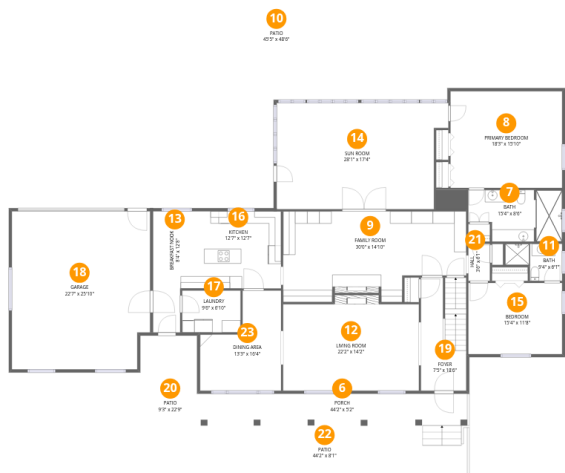
Room dimensions

Floor 1 Below grade Total:1027sqft Excluded: 1126sqft

#		Dimensions	sqft	Counted as living area
1	Storage	7'4" x 19'10"	146 sq. ft	No
2	Bath	5'11" x 6'2"	37 sq. ft	Yes
3	Basement	18'3" x 43'0"	785 sq. ft	No
4	Utility	22'9" x 14'0"	319 sq. ft	No
5	Recreation Room	43'6" x 29'4"	1276 sq. ft	Yes

Home data report

3808 Park Lane Southwest, Roanoke, Virginia 24015, United States



Room dimensions

Floor 2 Total:2656sqft Excluded: 3120sqft

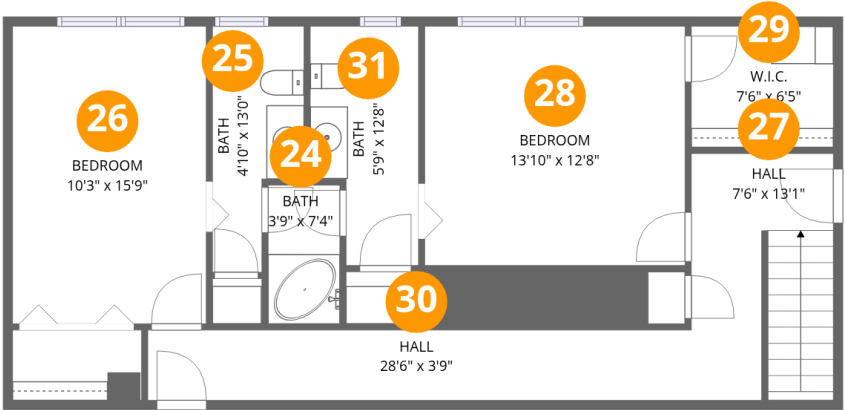
#		Dimensions	sqft	Counted as living area
6	Porch	44'2" x 5'2"	229 sq. ft	No
7	Bath	15'4" x 8'6"	130 sq. ft	Yes
8	Primary Bedroom	18'3" x 15'10"	289 sq. ft	Yes
9	Family Room	30'0" x 14'10"	445 sq. ft	Yes
10	Patio	45'5" x 48'6"	2205 sq. ft	No
11	Bath	9'4" x 6'1"	56 sq. ft	Yes
12	Living Room	22'2" x 14'2"	314 sq. ft	Yes
13	Breakfast Nook	8'4" x 12'8"	106 sq. ft	Yes
14	Sun Room	28'1" x 17'4"	488 sq. ft	Yes
15	Bedroom	15'4" x 11'8"	178 sq. ft	Yes
16	Kitchen	12'7" x 12'7"	158 sq. ft	Yes

Home data report

3808 Park Lane Southwest, Roanoke, Virginia 24015, United States

#		Dimensions	sqft	Counted as living area
17	Laundry	9'6" x 6'10"	65 sq. ft	Yes
18	Garage	22'7" x 25'10"	584 sq. ft	No
19	Foyer	7'5" x 18'6"	137 sq. ft	Yes
20	Patio	9'3" x 22'9"	211 sq. ft	No
21	Hall	3'6" x 6'1"	21 sq. ft	Yes
22	Patio	44'2" x 8'1"	356 sq. ft	No
23	Dining Area	13'3" x 16'4"	217 sq. ft	Yes

3808 Park Lane Southwest, Roanoke, Virginia 24015, United States



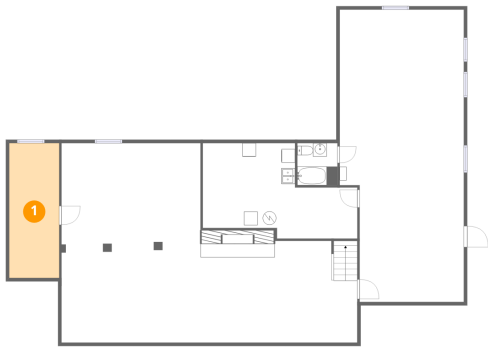
Room dimensions

Floor 3 Total:862sqft Excluded: 0sqft

#		Dimensions	sqft	Counted as living area
24	Bath	3'9" x 7'4"	28 sq. ft	Yes
25	Bath	4'10" x 13'0"	63 sq. ft	Yes
26	Bedroom	10'3" x 15'9"	162 sq. ft	Yes
27	Hall	7'6" x 13'1"	98 sq. ft	Yes
28	Bedroom	13'10" x 12'8"	175 sq. ft	Yes
29	W.I.C.	7'6" x 6'5"	48 sq. ft	Yes
30	Hall	28'6" x 3'9"	106 sq. ft	Yes
31	Bath	5'9" x 12'8"	73 sq. ft	Yes

3808 Park Lane Southwest, Roanoke, Virginia 24015, United States

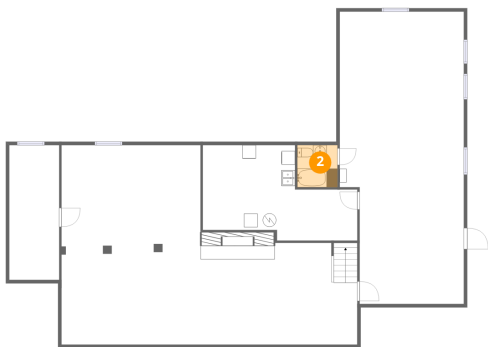
1 Floor 1 - Storage



Dimensions: 7'4" x 19'10"
Area: 146 sq. ft
Counted as living area: No

Heated: No
Finished: Yes
Enclosed: No
Contiguous: Yes
Permitted: Yes
Wet space: No
Addition: No
Conversion: No

2 Floor 1 - Bath

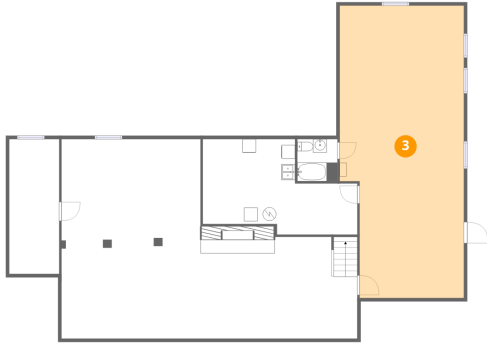


Dimensions: 5'11" x 6'2"
Area: 37 sq. ft
Counted as living area: No

Heated: Yes
Finished: Yes
Enclosed: Yes
Contiguous: No
Permitted: Yes
Wet space: Yes
Addition: No
Conversion: No

3808 Park Lane Southwest, Roanoke, Virginia 24015, United States

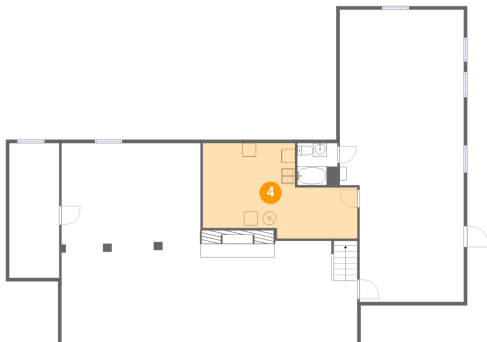
3 Floor 1 - Basement



Dimensions: 18'3" x 43'0"
Area: 785 sq. ft
Counted as living area: No

Heated: Yes
Finished: No
Enclosed: Yes
Contiguous: Yes
Permitted: Yes
Wet space: No
Addition: No
Conversion: No

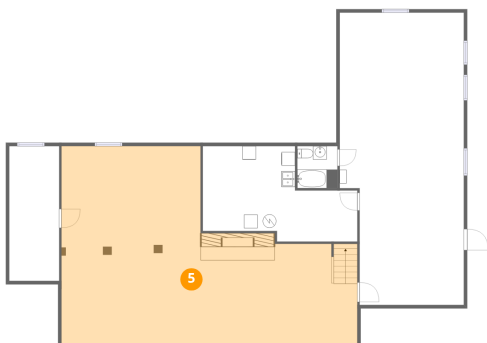
4 Floor 1 - Utility



Dimensions: 22'9" x 14'0"
Area: 319 sq. ft
Counted as living area: No

Heated: Yes
Finished: No
Enclosed: Yes
Contiguous: Yes
Permitted: Yes
Wet space: No
Addition: No
Conversion: No

5 Floor 1 - Recreation Room

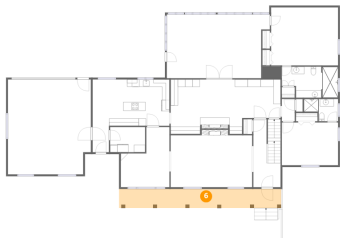


Dimensions: 43'6" x 29'4"
Area: 1276 sq. ft
Counted as living area: Yes

Heated: Yes
Finished: Yes
Enclosed: Yes
Contiguous: Yes
Permitted: Yes
Wet space: No
Addition: No
Conversion: No

3808 Park Lane Southwest, Roanoke, Virginia 24015, United States

6 Floor 2 - Porch



Dimensions: 44'2" x 5'2"
Area: 229 sq. ft
Counted as living area: No

Heated: No
Finished: No
Enclosed: No
Contiguous: Yes
Permitted: Yes
Wet space: No
Addition: No
Conversion: No

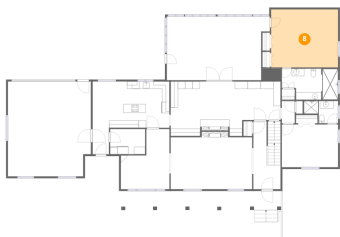
7 Floor 2 - Bath



Dimensions: 15'4" x 8'6"
Area: 130 sq. ft
Counted as living area: Yes

Heated: Yes
Finished: Yes
Enclosed: Yes
Contiguous: Yes
Permitted: Yes
Wet space: Yes
Addition: No
Conversion: No

8 Floor 2 - Primary Bedroom

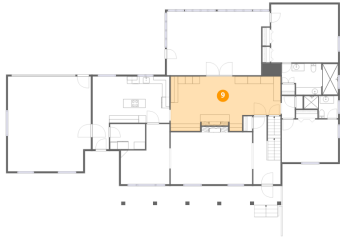


Dimensions: 18'3" x 15'10"
Area: 289 sq. ft
Counted as living area: Yes

Heated: Yes
Finished: Yes
Enclosed: Yes
Contiguous: Yes
Permitted: Yes
Wet space: No
Addition: No
Conversion: No

3808 Park Lane Southwest, Roanoke, Virginia 24015, United States

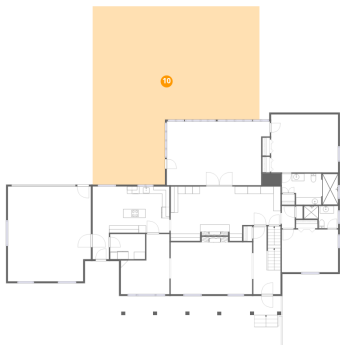
9 Floor 2 - Family Room



Dimensions: 30'0" x 14'10"
Area: 445 sq. ft
Counted as living area: Yes

Heated: Yes
Finished: Yes
Enclosed: Yes
Contiguous: Yes
Permitted: Yes
Wet space: No
Addition: No
Conversion: No

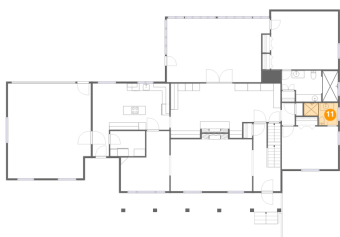
10 Floor 2 - Patio



Dimensions: 45'5" x 48'6"
Area: 2205 sq. ft
Counted as living area: No

Heated: No
Finished: No
Enclosed: No
Contiguous: Yes
Permitted: Yes
Wet space: No
Addition: No
Conversion: No

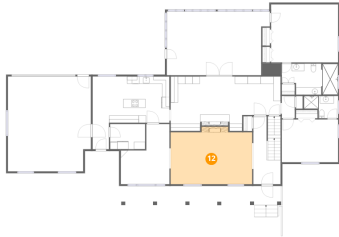
11 Floor 2 - Bath



Dimensions: 9'4" x 6'1"
Area: 56 sq. ft
Counted as living area: Yes

Heated: Yes
Finished: Yes
Enclosed: Yes
Contiguous: Yes
Permitted: Yes
Wet space: Yes
Addition: No
Conversion: No

12 Floor 2 - Living Room



Dimensions: 22'2" x 14'2"
Area: 314 sq. ft
Counted as living area: Yes

Heated: Yes
Finished: Yes
Enclosed: Yes
Contiguous: Yes
Permitted: Yes
Wet space: No
Addition: No
Conversion: No

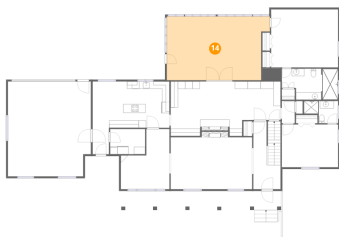
13 Floor 2 - Breakfast Nook



Dimensions: 8'4" x 12'8"
Area: 106 sq. ft
Counted as living area: Yes

Heated: Yes
Finished: Yes
Enclosed: Yes
Contiguous: Yes
Permitted: Yes
Wet space: No
Addition: No
Conversion: No

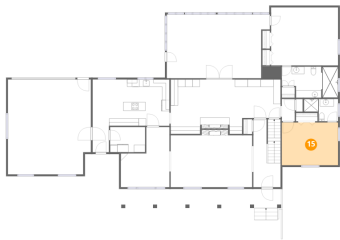
14 Floor 2 - Sun Room



Dimensions: 28'1" x 17'4"
Area: 488 sq. ft
Counted as living area: Yes

Heated: Yes
Finished: Yes
Enclosed: Yes
Contiguous: Yes
Permitted: Yes
Wet space: No
Addition: No
Conversion: No

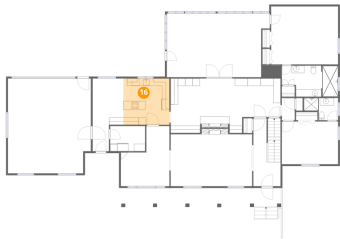
15 Floor 2 - Bedroom



Dimensions: 15'4" x 11'8"
Area: 178 sq. ft
Counted as living area: Yes

Heated: Yes
Finished: Yes
Enclosed: Yes
Contiguous: Yes
Permitted: Yes
Wet space: No
Addition: No
Conversion: No

16 Floor 2 - Kitchen



Dimensions: 12'7" x 12'7"
Area: 158 sq. ft
Counted as living area: Yes

Heated: Yes
Finished: Yes
Enclosed: Yes
Contiguous: Yes
Permitted: Yes
Wet space: No
Addition: No
Conversion: No

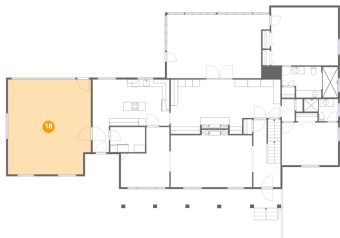
17 Floor 2 - Laundry



Dimensions: 9'6" x 6'10"
Area: 65 sq. ft
Counted as living area: Yes

Heated: Yes
Finished: Yes
Enclosed: Yes
Contiguous: Yes
Permitted: Yes
Wet space: No
Addition: No
Conversion: No

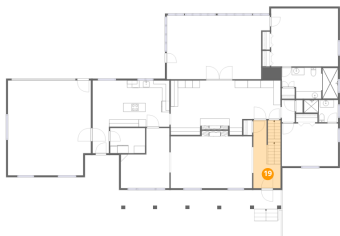
18 Floor 2 - Garage



Dimensions: 22'7" x 25'10"
Area: 584 sq. ft
Counted as living area: No

Heated: No
Finished: No
Enclosed: Yes
Contiguous: Yes
Permitted: Yes
Wet space: No
Addition: No
Conversion: No

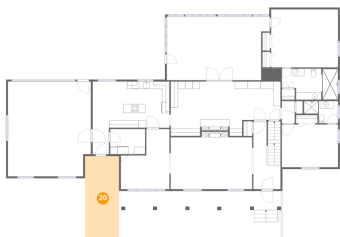
19 Floor 2 - Foyer



Dimensions: 7'5" x 18'6"
Area: 137 sq. ft
Counted as living area: Yes

Heated: Yes
Finished: Yes
Enclosed: Yes
Contiguous: Yes
Permitted: Yes
Wet space: No
Addition: No
Conversion: No

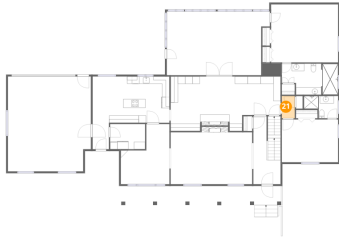
20 Floor 2 - Patio



Dimensions: 9'3" x 22'9"
Area: 211 sq. ft
Counted as living area: No

Heated: No
Finished: No
Enclosed: No
Contiguous: Yes
Permitted: Yes
Wet space: No
Addition: No
Conversion: No

21 Floor 2 - Hall



Dimensions: 3'6" x 6'1"
Area: 21 sq. ft
Counted as living area: Yes

Heated: Yes
Finished: Yes
Enclosed: Yes
Contiguous: Yes
Permitted: Yes
Wet space: No
Addition: No
Conversion: No

22 Floor 2 - Patio



Dimensions: 44'2" x 8'1"
Area: 356 sq. ft
Counted as living area: No

Heated: No
Finished: No
Enclosed: No
Contiguous: Yes
Permitted: Yes
Wet space: No
Addition: No
Conversion: No

23 Floor 2 - Dining Area

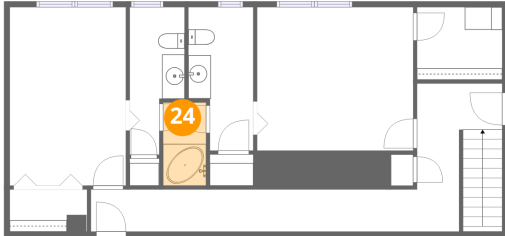


Dimensions: 13'3" x 16'4"
Area: 217 sq. ft
Counted as living area: Yes

Heated: Yes
Finished: Yes
Enclosed: Yes
Contiguous: Yes
Permitted: Yes
Wet space: No
Addition: No
Conversion: No

3808 Park Lane Southwest, Roanoke, Virginia 24015, United States

24 Floor 3 - Bath



Dimensions: 3'9" x 7'4"
Area: 28 sq. ft
Counted as living area: Yes

Heated: Yes
Finished: Yes
Enclosed: Yes
Contiguous: Yes
Permitted: Yes
Wet space: Yes
Addition: No
Conversion: No

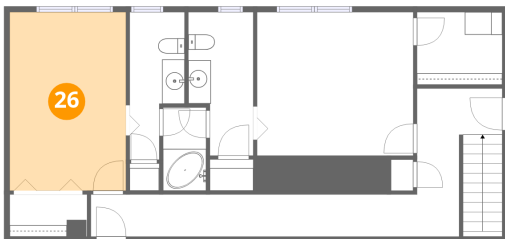
25 Floor 3 - Bath



Dimensions: 4'10" x 13'0"
Area: 63 sq. ft
Counted as living area: Yes

Heated: Yes
Finished: Yes
Enclosed: Yes
Contiguous: Yes
Permitted: Yes
Wet space: Yes
Addition: No
Conversion: No

26 Floor 3 - Bedroom



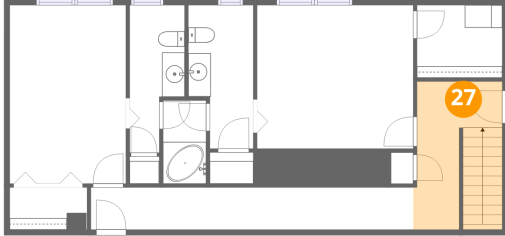
Dimensions: 10'3" x 15'9"
Area: 162 sq. ft
Counted as living area: Yes

Heated: Yes
Finished: Yes
Enclosed: Yes
Contiguous: Yes
Permitted: Yes
Wet space: No
Addition: No
Conversion: No

Home data report

3808 Park Lane Southwest, Roanoke, Virginia 24015, United States

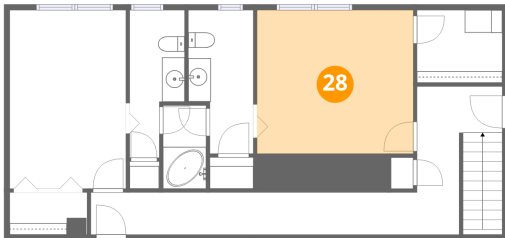
27 Floor 3 - Hall



Dimensions: 7'6" x 13'1"
Area: 98 sq. ft
Counted as living area: Yes

Heated: Yes
Finished: Yes
Enclosed: Yes
Contiguous: Yes
Permitted: Yes
Wet space: No
Addition: No
Conversion: No

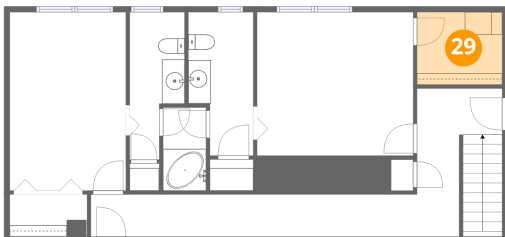
28 Floor 3 - Bedroom



Dimensions: 13'10" x 12'8"
Area: 175 sq. ft
Counted as living area: Yes

Heated: Yes
Finished: Yes
Enclosed: Yes
Contiguous: Yes
Permitted: Yes
Wet space: No
Addition: No
Conversion: No

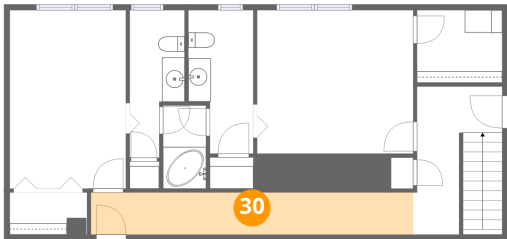
29 Floor 3 - W.I.C.



Dimensions: 7'6" x 6'5"
Area: 48 sq. ft
Counted as living area: Yes

Heated: Yes
Finished: Yes
Enclosed: Yes
Contiguous: Yes
Permitted: Yes
Wet space: No
Addition: No
Conversion: No

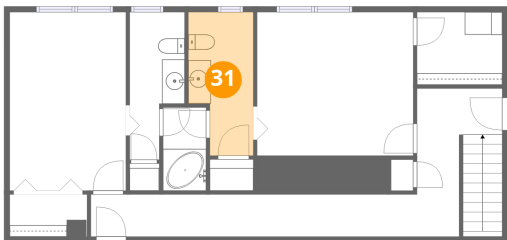
30 Floor 3 - Hall



Dimensions: 28'6" x 3'9"
Area: 106 sq. ft
Counted as living area: Yes

Heated: Yes
Finished: Yes
Enclosed: Yes
Contiguous: Yes
Permitted: Yes
Wet space: No
Addition: No
Conversion: No

31 Floor 3 - Bath



Dimensions: 5'9" x 12'8"
Area: 73 sq. ft
Counted as living area: Yes

Heated: Yes
Finished: Yes
Enclosed: Yes
Contiguous: Yes
Permitted: Yes
Wet space: Yes
Addition: No
Conversion: No