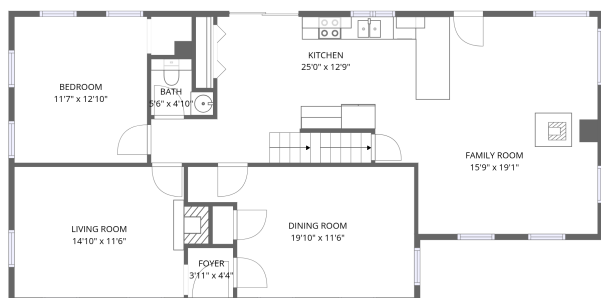
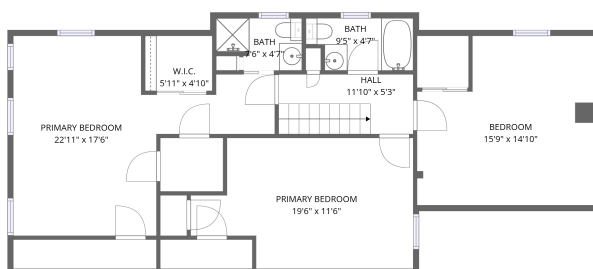


Home data report

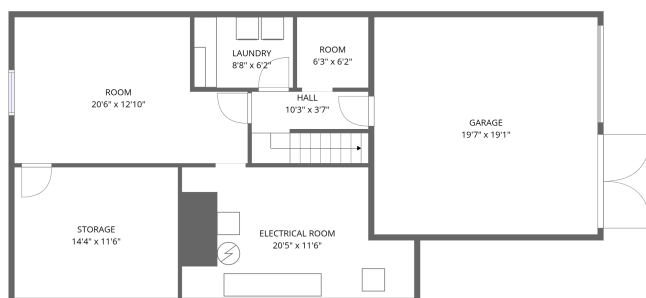
24 Peaceful Way, Tiverton, Newport County, Rhode Island,
United States, 02878



2nd floor



3rd floor



1st floor

Total Area: 2274 sq. ft

1st Floor: 194 sq. ft, 2nd Floor: 1170 sq. ft, 3rd Floor: 910 sq. ft

Excluded: Electrical room 192 sq. ft, Room 234 sq. ft, Storage 165 sq. ft, Garage 374 sq. ft, Low ceiling 72 sq. ft, Walls: 239 sq. ft

Property summary



3
Floors



4
Bedrooms



2
Bathrooms

Home data report

**24 Peaceful Way, Tiverton, Newport County, Rhode Island,
United States, 02878**



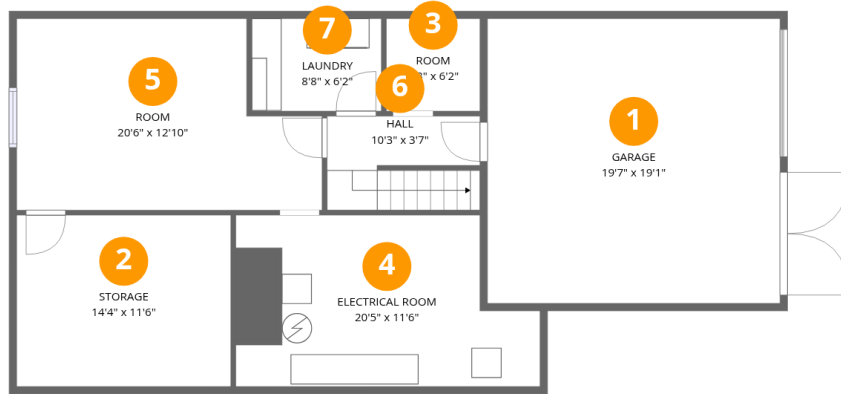
1
Half baths



1
Garages

Home data report

24 Peaceful Way, Tiverton, Newport County, Rhode Island, United States, 02878



Room dimensions

Floor 1

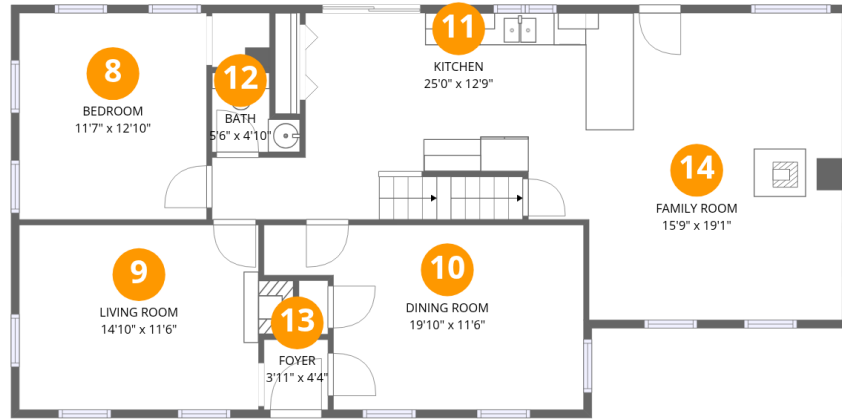
Total:194sqft

Excluded: 965sqft

#		Dimensions	sqft	Counted as living area
1	Garage	19'7" x 19'1"	374 sq. ft	No
2	Storage	14'4" x 11'6"	165 sq. ft	No
3	Room	6'3" x 6'2"	39 sq. ft	Yes
4	Electrical Room	20'5" x 11'6"	188 sq. ft	No
5	Room	20'6" x 12'10"	229 sq. ft	No
6	Hall	10'3" x 3'7"	62 sq. ft	Yes
7	Laundry	8'8" x 6'2"	54 sq. ft	Yes

Home data report

24 Peaceful Way, Tiverton, Newport County, Rhode Island, United States, 02878



Room dimensions

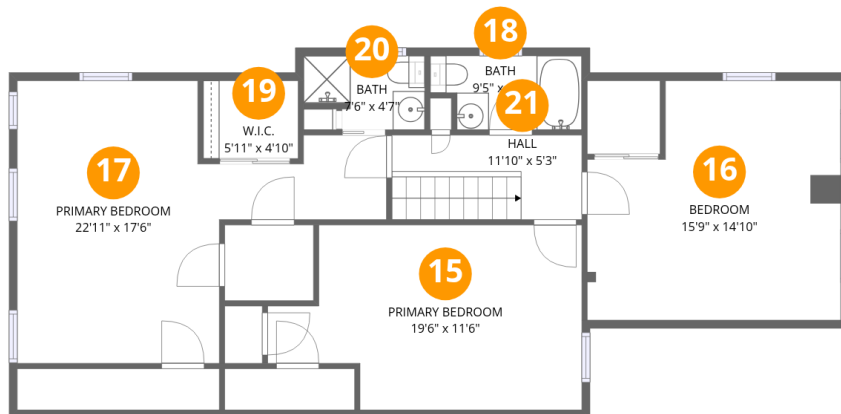
Floor 2

Total:1170sqft

Excluded: 0sqft

#		Dimensions	sqft	Counted as living area
8	Bedroom	11'7" x 12'10"	149 sq. ft	Yes
9	Living Room	14'10" x 11'6"	178 sq. ft	Yes
10	Dining Room	19'10" x 11'6"	193 sq. ft	Yes
11	Kitchen	25'0" x 12'9"	273 sq. ft	Yes
12	Bath	5'6" x 4'10"	22 sq. ft	Yes
13	Foyer	3'11" x 4'4"	17 sq. ft	Yes
14	Family Room	15'9" x 19'1"	272 sq. ft	Yes

24 Peaceful Way, Tiverton, Newport County, Rhode Island, United States, 02878



Room dimensions

Floor 3

Total:910sqft Excluded: 72sqft

#		Dimensions	sqft	Counted as living area
15	Primary Bedroom	19'6" x 11'6"	191 sq. ft	Yes
16	Bedroom	15'9" x 14'10"	173 sq. ft	Yes
17	Primary Bedroom	22'11" x 17'6"	237 sq. ft	Yes
18	Bath	9'5" x 4'7"	39 sq. ft	Yes
19	W.I.C.	5'11" x 4'10"	17 sq. ft	Yes
20	Bath	7'6" x 4'7"	31 sq. ft	Yes
21	Hall	11'10" x 5'3"	62 sq. ft	Yes

24 Peaceful Way, Tiverton, Newport County, Rhode Island,
United States, 02878

1 Floor 1 - Garage



Dimensions: 19'7" x 19'1"
Area: 374 sq. ft
Counted as living area: No

Heated: No
Finished: No
Enclosed: Yes
Contiguous: Yes
Permitted: Yes
Wet space: No
Addition: No
Conversion: No

2 Floor 1 - Storage



Dimensions: 14'4" x 11'6"
Area: 165 sq. ft
Counted as living area: No

Heated: No
Finished: No
Enclosed: No
Contiguous: Yes
Permitted: Yes
Wet space: No
Addition: No
Conversion: No

3 Floor 1 - Room



Dimensions: 6'3" x 6'2"
Area: 39 sq. ft
Counted as living area: Yes

Heated: Yes
Finished: Yes
Enclosed: Yes
Contiguous: Yes
Permitted: Yes
Wet space: No
Addition: No
Conversion: No

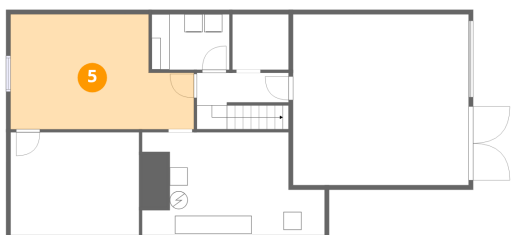
4 Floor 1 - Electrical Room



Dimensions: 20'5" x 11'6"
Area: 188 sq. ft
Counted as living area: No

Heated: No
Finished: No
Enclosed: Yes
Contiguous: Yes
Permitted: Yes
Wet space: No
Addition: No
Conversion: No

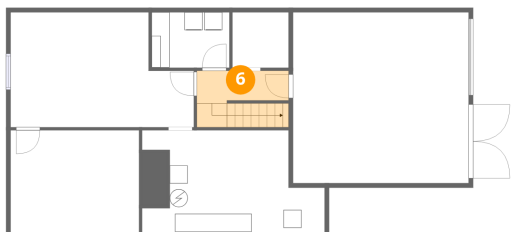
5 Floor 1 - Room



Dimensions: 20'6" x 12'10"
Area: 229 sq. ft
Counted as living area: No

Heated: Yes
Finished: No
Enclosed: Yes
Contiguous: Yes
Permitted: Yes
Wet space: No
Addition: No
Conversion: No

6 Floor 1 - Hall



Dimensions: 10'3" x 3'7"
Area: 62 sq. ft
Counted as living area: Yes

Heated: Yes
Finished: Yes
Enclosed: Yes
Contiguous: Yes
Permitted: Yes
Wet space: No
Addition: No
Conversion: No

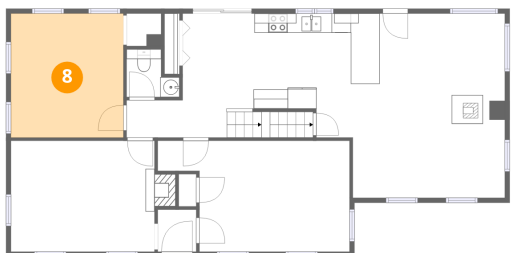
7 Floor 1 - Laundry



Dimensions: 8'8" x 6'2"
Area: 54 sq. ft
Counted as living area: Yes

Heated: Yes
Finished: Yes
Enclosed: Yes
Contiguous: Yes
Permitted: Yes
Wet space: No
Addition: No
Conversion: No

8 Floor 2 - Bedroom

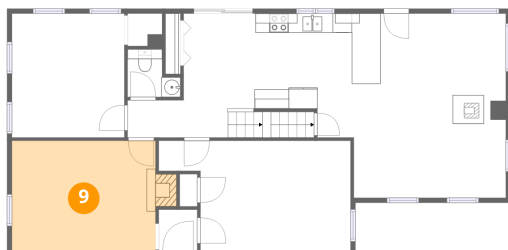


Dimensions: 11'7" x 12'10"
Area: 149 sq. ft
Counted as living area: Yes

Heated: Yes
Finished: Yes
Enclosed: Yes
Contiguous: Yes
Permitted: Yes
Wet space: No
Addition: No
Conversion: No

24 Peaceful Way, Tiverton, Newport County, Rhode Island,
United States, 02878

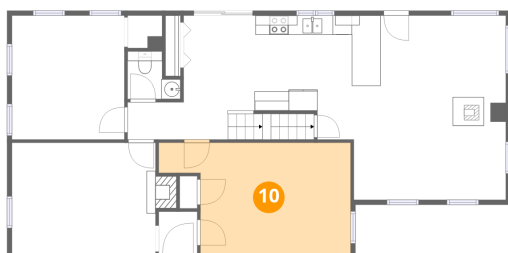
9 Floor 2 - Living Room



Dimensions: 14'10" x 11'6"
Area: 178 sq. ft
Counted as living area: Yes

Heated: Yes
Finished: Yes
Enclosed: Yes
Contiguous: Yes
Permitted: Yes
Wet space: No
Addition: No
Conversion: No

10 Floor 2 - Dining Room



Dimensions: 19'10" x 11'6"
Area: 193 sq. ft
Counted as living area: Yes

Heated: Yes
Finished: Yes
Enclosed: Yes
Contiguous: Yes
Permitted: Yes
Wet space: No
Addition: No
Conversion: No

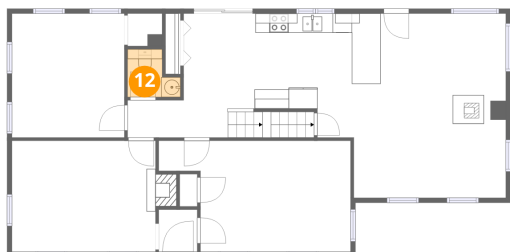
11 Floor 2 - Kitchen



Dimensions: 25'0" x 12'9"
Area: 273 sq. ft
Counted as living area: Yes

Heated: Yes
Finished: Yes
Enclosed: Yes
Contiguous: Yes
Permitted: Yes
Wet space: No
Addition: No
Conversion: No

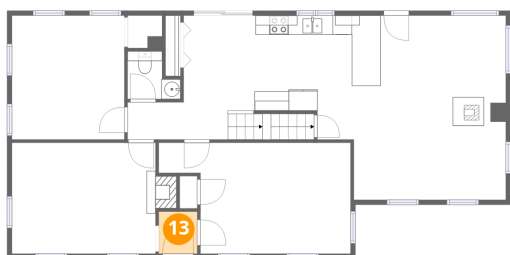
12 Floor 2 - Bath



Dimensions: 5'6" x 4'10"
Area: 22 sq. ft
Counted as living area: Yes

Heated: Yes
Finished: Yes
Enclosed: Yes
Contiguous: Yes
Permitted: Yes
Wet space: Yes
Addition: No
Conversion: No

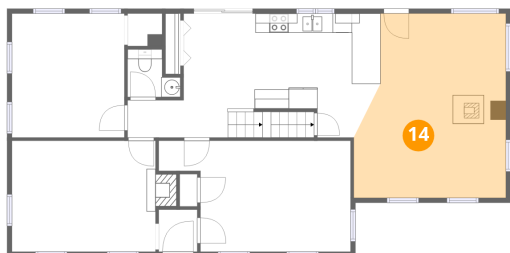
13 Floor 2 - Foyer



Dimensions: 3'11" x 4'4"
Area: 17 sq. ft
Counted as living area: Yes

Heated: Yes
Finished: Yes
Enclosed: Yes
Contiguous: Yes
Permitted: Yes
Wet space: No
Addition: No
Conversion: No

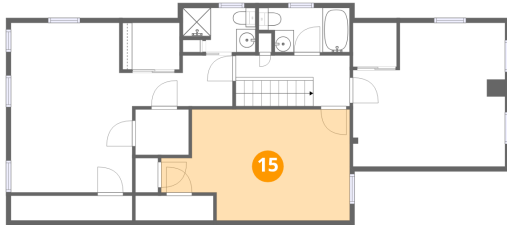
14 Floor 2 - Family Room



Dimensions: 15'9" x 19'1"
Area: 272 sq. ft
Counted as living area: Yes

Heated: Yes
Finished: Yes
Enclosed: Yes
Contiguous: Yes
Permitted: Yes
Wet space: No
Addition: No
Conversion: No

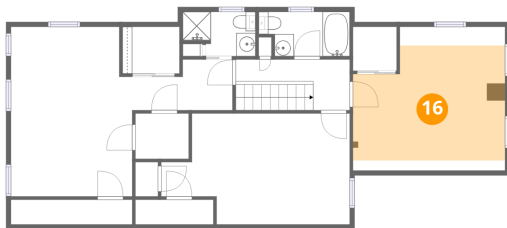
15 Floor 3 - Primary Bedroom



Dimensions: 19'6" x 11'6"
Area: 191 sq. ft
Counted as living area: Yes

Heated: Yes
Finished: Yes
Enclosed: Yes
Contiguous: Yes
Permitted: Yes
Wet space: No
Addition: No
Conversion: No

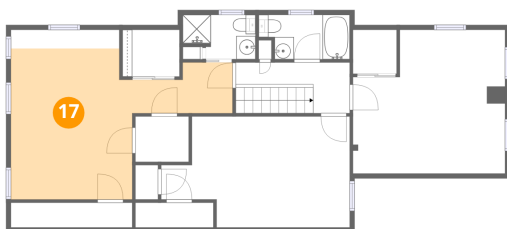
16 Floor 3 - Bedroom



Dimensions: 15'9" x 14'10"
Area: 173 sq. ft
Counted as living area: Yes

Heated: Yes
Finished: Yes
Enclosed: Yes
Contiguous: Yes
Permitted: Yes
Wet space: No
Addition: No
Conversion: No

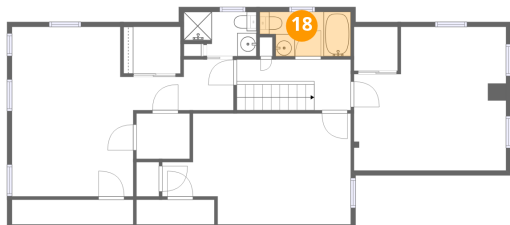
17 Floor 3 - Primary Bedroom



Dimensions: 22'11" x 17'6"
Area: 237 sq. ft
Counted as living area: Yes

Heated: Yes
Finished: Yes
Enclosed: Yes
Contiguous: Yes
Permitted: Yes
Wet space: No
Addition: No
Conversion: No

18 Floor 3 - Bath



Dimensions: 9'5" x 4'7"
Area: 39 sq. ft
Counted as living area: Yes

Heated: Yes
Finished: Yes
Enclosed: Yes
Contiguous: Yes
Permitted: Yes
Wet space: Yes
Addition: No
Conversion: No

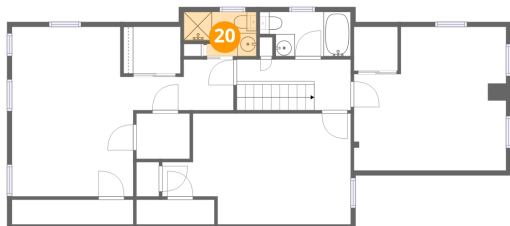
19 Floor 3 - W.I.C.



Dimensions: 5'11" x 4'10"
Area: 17 sq. ft
Counted as living area: Yes

Heated: Yes
Finished: Yes
Enclosed: Yes
Contiguous: Yes
Permitted: Yes
Wet space: No
Addition: No
Conversion: No

20 Floor 3 - Bath



Dimensions: 7'6" x 4'7"
Area: 31 sq. ft
Counted as living area: Yes

Heated: Yes
Finished: Yes
Enclosed: Yes
Contiguous: Yes
Permitted: Yes
Wet space: Yes
Addition: No
Conversion: No

**24 Peaceful Way, Tiverton, Newport County, Rhode Island,
United States, 02878**

21 Floor 3 - Hall



Dimensions: 11'10" x 5'3"
Area: 62 sq. ft
Counted as living area: Yes

Heated: Yes
Finished: Yes
Enclosed: Yes
Contiguous: Yes
Permitted: Yes
Wet space: No
Addition: No
Conversion: No