

Home data report

2 Atlas Avenue, Malverne, Nassau County, New York, United States, 11565



Total Area: 2475 sq. ft

Below Ground: 567 sq. ft, Floor 2: 954 sq. ft, Floor 3: 954 sq. ft

Excluded: Utilities 61 sq. ft, Undefined 4 sq. ft, Covered porch 467 sq. ft, Walls: 181 sq. ft

Property summary

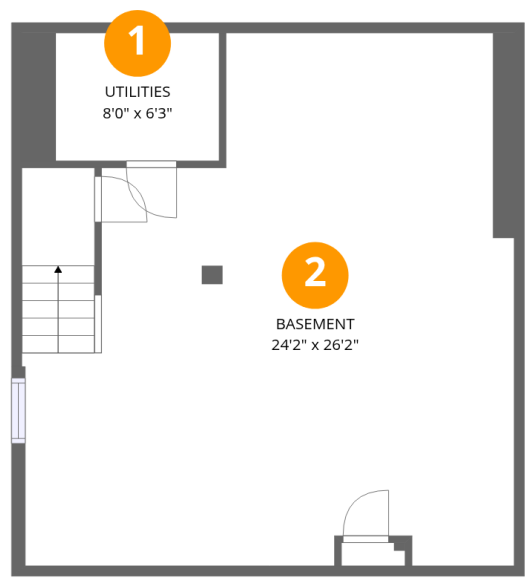
 **3** Floors

 **4** Bedrooms

 **2** Bathrooms

 **1** Half baths

2 Atlas Avenue, Malverne, Nassau County, New York, United States, 11565



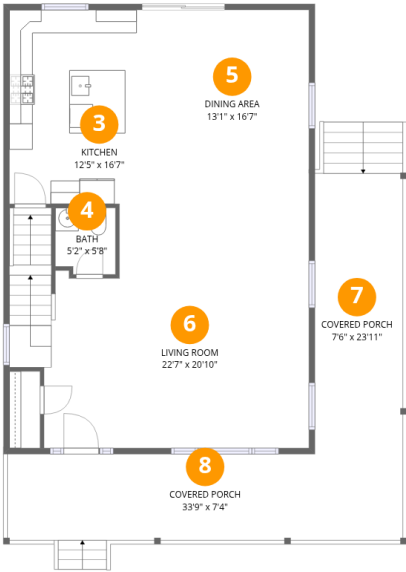
Room dimensions

Floor 1 Below grade Total:567sqft Excluded: 65sqft

#		Dimensions	sqft	Counted as living area
1	Utilities	8'0" x 6'3"	61 sq. ft	No
2	Basement	24'2" x 26'2"	558 sq. ft	Yes

Home data report

2 Atlas Avenue, Malverne, Nassau County, New York, United States, 11565



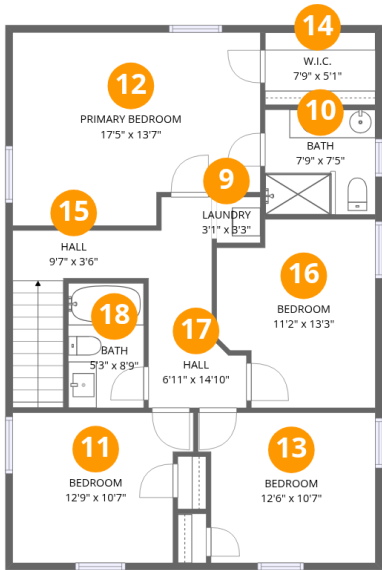
Room dimensions

Floor 2 Total:954sqft Excluded: 467sqft

#		Dimensions	sqft	Counted as living area
3	Kitchen	12'5" x 16'7"	206 sq. ft	Yes
4	Bath	5'2" x 5'8"	28 sq. ft	Yes
5	Dining Area	13'1" x 16'7"	217 sq. ft	Yes
6	Living Room	22'7" x 20'10"	474 sq. ft	Yes
7	Covered Porch	7'6" x 23'11"	209 sq. ft	No
8	Covered Porch	33'9" x 7'4"	258 sq. ft	No

Home data report

2 Atlas Avenue, Malverne, Nassau County, New York, United States, 11565



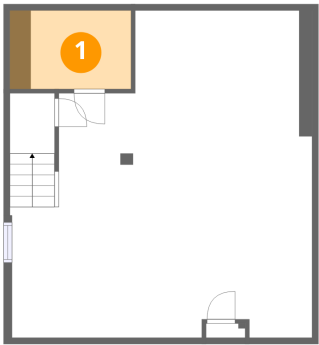
Room dimensions

Floor 3 Total:954sqft Excluded: 0sqft

#		Dimensions	sqft	Counted as living area
9	Laundry	3'1" x 3'3"	10 sq. ft	Yes
10	Bath	7'9" x 7'5"	57 sq. ft	Yes
11	Bedroom	12'9" x 10'7"	123 sq. ft	Yes
12	Primary Bedroom	17'5" x 13'7"	220 sq. ft	Yes
13	Bedroom	12'6" x 10'7"	125 sq. ft	Yes
14	W.I.C.	7'9" x 5'1"	40 sq. ft	Yes
15	Hall	9'7" x 3'6"	65 sq. ft	Yes
16	Bedroom	11'2" x 13'3"	131 sq. ft	Yes
17	Hall	6'11" x 14'10"	74 sq. ft	Yes
18	Bath	5'3" x 8'9"	47 sq. ft	Yes

2 Atlas Avenue, Malverne, Nassau County, New York, United States, 11565

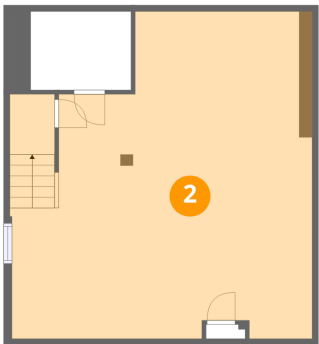
1 Floor 1 - Utilities



Dimensions: 8'0" x 6'3"
Area: 61 sq. ft
Counted as living area: No

Heated: Yes
Finished: No
Enclosed: Yes
Contiguous: Yes
Permitted: Yes
Wet space: No
Addition: No
Conversion: No

2 Floor 1 - Basement



Dimensions: 24'2" x 26'2"
Area: 558 sq. ft
Counted as living area: Yes

Heated: Yes
Finished: Yes
Enclosed: Yes
Contiguous: Yes
Permitted: Yes
Wet space: No
Addition: No
Conversion: No

3 Floor 2 - Kitchen



Dimensions: 12'5" x 16'7"
Area: 206 sq. ft
Counted as living area: Yes

Heated: Yes
Finished: Yes
Enclosed: Yes
Contiguous: Yes
Permitted: Yes
Wet space: No
Addition: No
Conversion: No

4 Floor 2 - Bath



Dimensions: 5'2" x 5'8"
Area: 28 sq. ft
Counted as living area: Yes

Heated: Yes
Finished: Yes
Enclosed: Yes
Contiguous: Yes
Permitted: Yes
Wet space: Yes
Addition: No
Conversion: No

5 Floor 2 - Dining Area

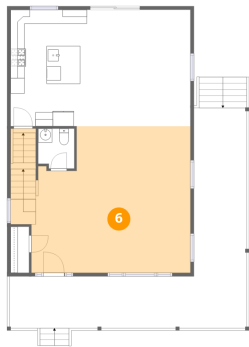


Dimensions: 13'1" x 16'7"
Area: 217 sq. ft
Counted as living area: Yes

Heated: Yes
Finished: Yes
Enclosed: Yes
Contiguous: Yes
Permitted: Yes
Wet space: No
Addition: No
Conversion: No

2 Atlas Avenue, Malverne, Nassau County, New York, United States, 11565

6 Floor 2 - Living Room



Dimensions: 22'7" x 20'10"
Area: 474 sq. ft
Counted as living area: Yes

Heated: Yes
Finished: Yes
Enclosed: Yes
Contiguous: Yes
Permitted: Yes
Wet space: No
Addition: No
Conversion: No

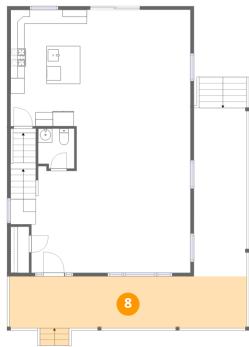
7 Floor 2 - Covered Porch



Dimensions: 7'6" x 23'11"
Area: 209 sq. ft
Counted as living area: No

Heated: No
Finished: No
Enclosed: No
Contiguous: Yes
Permitted: Yes
Wet space: No
Addition: No
Conversion: No

8 Floor 2 - Covered Porch

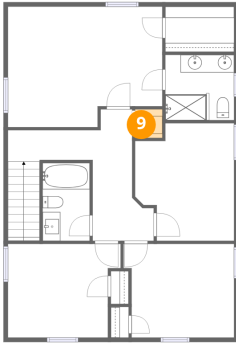


Dimensions: 33'9" x 7'4"
Area: 258 sq. ft
Counted as living area: No

Heated: No
Finished: No
Enclosed: No
Contiguous: Yes
Permitted: Yes
Wet space: No
Addition: No
Conversion: No

2 Atlas Avenue, Malverne, Nassau County, New York, United States, 11565

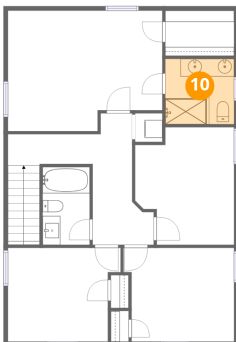
9 Floor 3 - Laundry



Dimensions: 3'1" x 3'3"
Area: 10 sq. ft
Counted as living area: Yes

Heated: Yes
Finished: Yes
Enclosed: Yes
Contiguous: Yes
Permitted: Yes
Wet space: No
Addition: No
Conversion: No

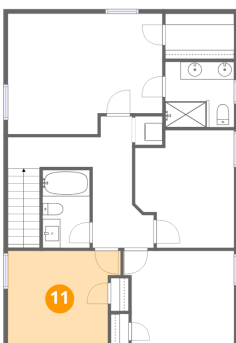
10 Floor 3 - Bath



Dimensions: 7'9" x 7'5"
Area: 57 sq. ft
Counted as living area: Yes

Heated: Yes
Finished: Yes
Enclosed: Yes
Contiguous: Yes
Permitted: Yes
Wet space: Yes
Addition: No
Conversion: No

11 Floor 3 - Bedroom

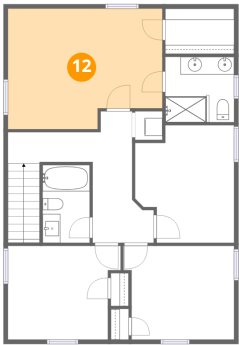


Dimensions: 12'9" x 10'7"
Area: 123 sq. ft
Counted as living area: Yes

Heated: Yes
Finished: Yes
Enclosed: Yes
Contiguous: Yes
Permitted: Yes
Wet space: No
Addition: No
Conversion: No

2 Atlas Avenue, Malverne, Nassau County, New York, United States, 11565

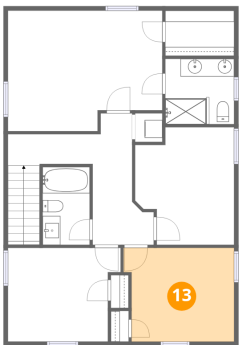
12 Floor 3 - Primary Bedroom



Dimensions: 17'5" x 13'7"
Area: 220 sq. ft
Counted as living area: Yes

Heated: Yes
Finished: Yes
Enclosed: Yes
Contiguous: Yes
Permitted: Yes
Wet space: No
Addition: No
Conversion: No

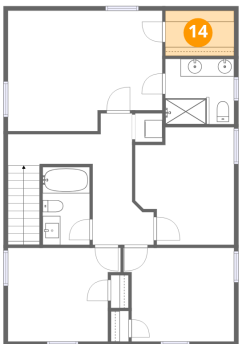
13 Floor 3 - Bedroom



Dimensions: 12'6" x 10'7"
Area: 125 sq. ft
Counted as living area: Yes

Heated: Yes
Finished: Yes
Enclosed: Yes
Contiguous: Yes
Permitted: Yes
Wet space: No
Addition: No
Conversion: No

14 Floor 3 - W.I.C.

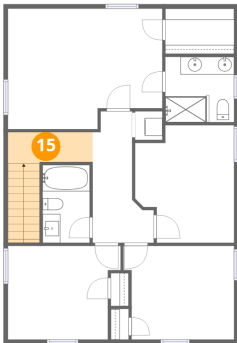


Dimensions: 7'9" x 5'1"
Area: 40 sq. ft
Counted as living area: Yes

Heated: Yes
Finished: Yes
Enclosed: Yes
Contiguous: Yes
Permitted: Yes
Wet space: No
Addition: No
Conversion: No

2 Atlas Avenue, Malverne, Nassau County, New York, United States, 11565

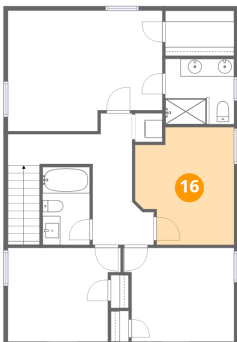
15 Floor 3 - Hall



Dimensions: 9'7" x 3'6"
Area: 65 sq. ft
Counted as living area: Yes

Heated: Yes
Finished: Yes
Enclosed: Yes
Contiguous: Yes
Permitted: Yes
Wet space: No
Addition: No
Conversion: No

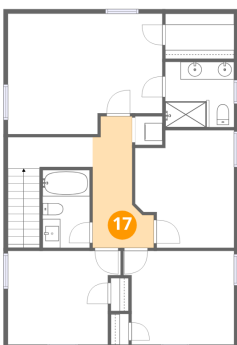
16 Floor 3 - Bedroom



Dimensions: 11'2" x 13'3"
Area: 131 sq. ft
Counted as living area: Yes

Heated: Yes
Finished: Yes
Enclosed: Yes
Contiguous: Yes
Permitted: Yes
Wet space: No
Addition: No
Conversion: No

17 Floor 3 - Hall

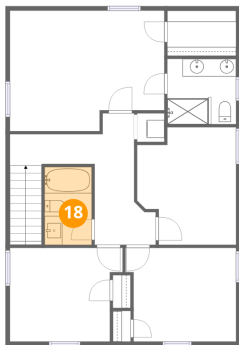


Dimensions: 6'11" x 14'10"
Area: 74 sq. ft
Counted as living area: Yes

Heated: Yes
Finished: Yes
Enclosed: Yes
Contiguous: Yes
Permitted: Yes
Wet space: No
Addition: No
Conversion: No

2 Atlas Avenue, Malverne, Nassau County, New York, United States, 11565

18 Floor 3 - Bath



Dimensions: 5'3" x 8'9"
Area: 47 sq. ft
Counted as living area: Yes

Heated: Yes
Finished: Yes
Enclosed: Yes
Contiguous: Yes
Permitted: Yes
Wet space: Yes
Addition: No
Conversion: No