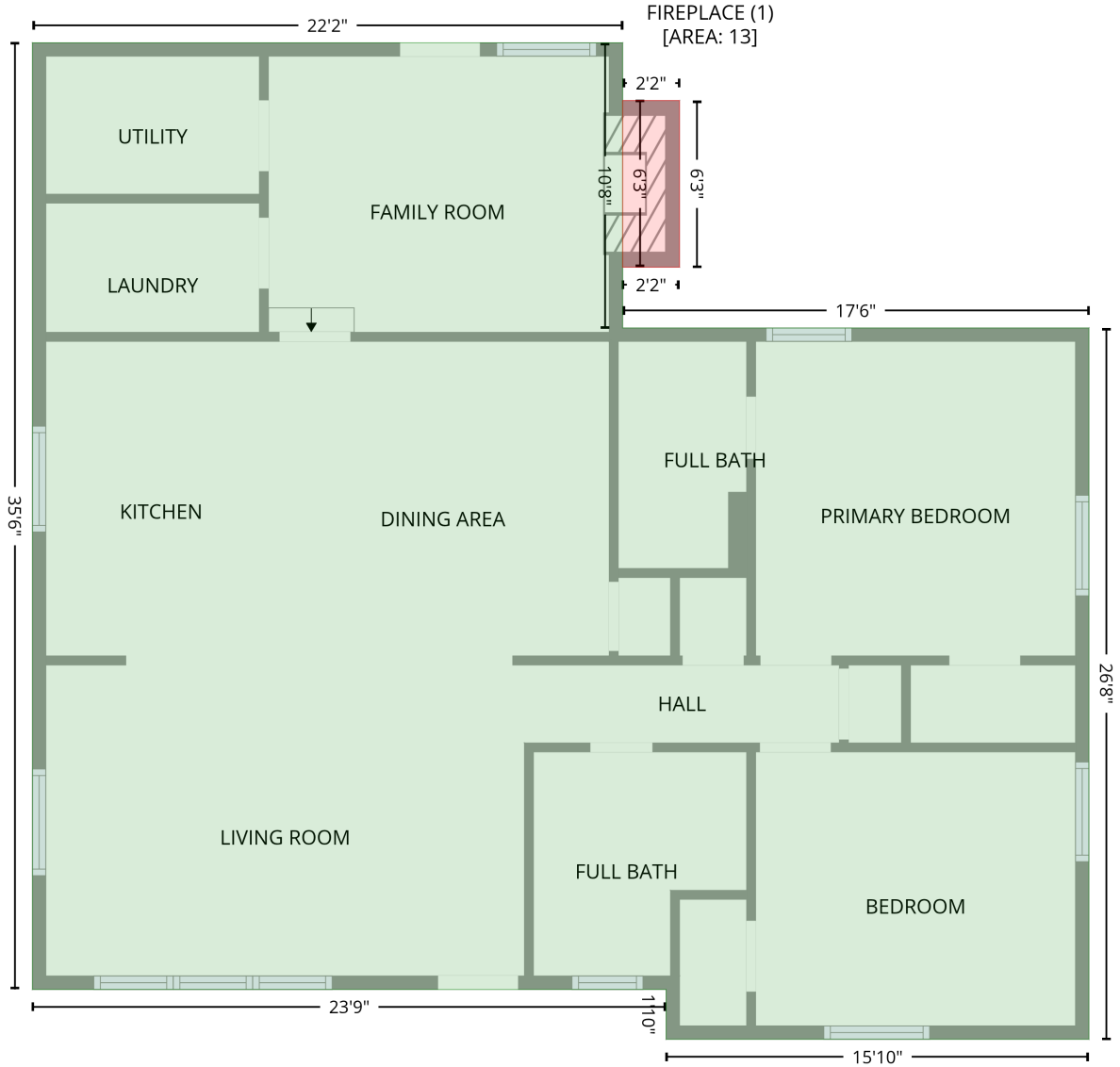


4809 Brooktree Dr, Charlotte, NC, US

Gross Living Area: 1249 sq. ft

Level 1

1st floor
[AREA: 1249]



| Space | Area (sq. ft) | Calculation <small>Coordinate Polygon Area Algorithm using inches</small> |
|--------------------------------|---------------|---|
| 1st floor (Living area) | 1249 | $-\left((268.5 + 268.5) * (3.4 - 131.8) + (268.5 + 478.3) * (131.8 - 131.8) + (478.3 + 478.3) * (131.8 - 452) + (478.3 + 288.1) * (452 - 452) + (288.1 + 288.1) * (452 - 429.5) + (288.1 + 2.9) * (429.5 - 429.5) + (2.9 + 2.9) * (429.5 - 3.4) + (2.9 + 268.5) * (3.4 - 3.4)\right) * 0.5 * 0.00694$ |
| FIREPLACE (Non-living area) | 13 | $-\left((294.1 + 294.1) * (29.4 - 104.4) + (294.1 + 268.5) * (104.4 - 104.4) + (268.5 + 268.5) * (104.4 - 29.4) + (268.5 + 294.1) * (29.4 - 29.4)\right) * 0.5 * 0.00694$ |