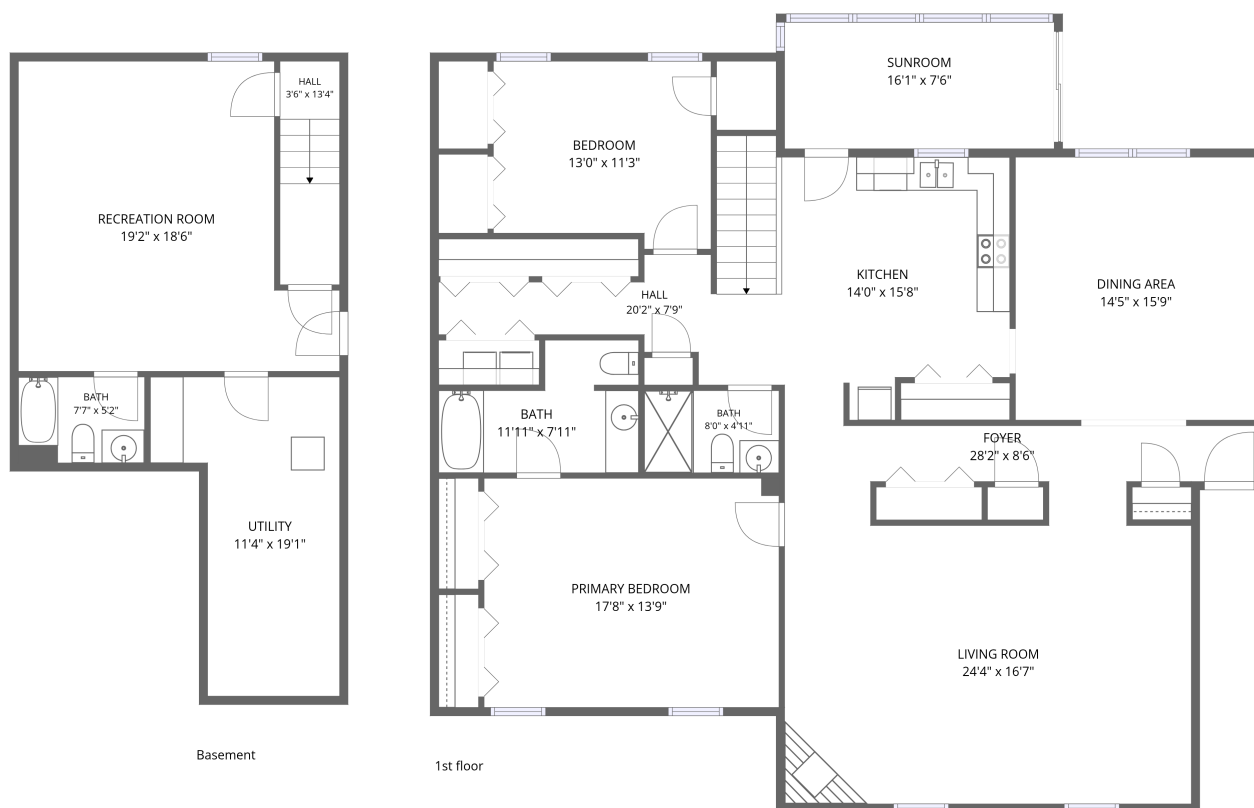


Home data report

2231 Broadway Avenue Southwest, Roanoke, Virginia 24014,  
United States, Apt D



**Total Area: 2219 sq. ft**

Basement: 404 sq. ft, 1st Floor: 1815 sq. ft

Excluded: Utility 169 sq. ft, Sunroom 122 sq. ft, Walls: 165 sq. ft

## Property summary

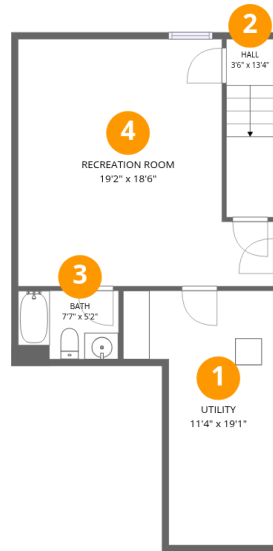
 **2** Floors

 **2** Bedrooms

 **3** Bathrooms

## Home data report

2231 Broadway Avenue Southwest, Roanoke, Virginia 24014, United States, Apt D



## Room dimensions

Floor 1 Below grade

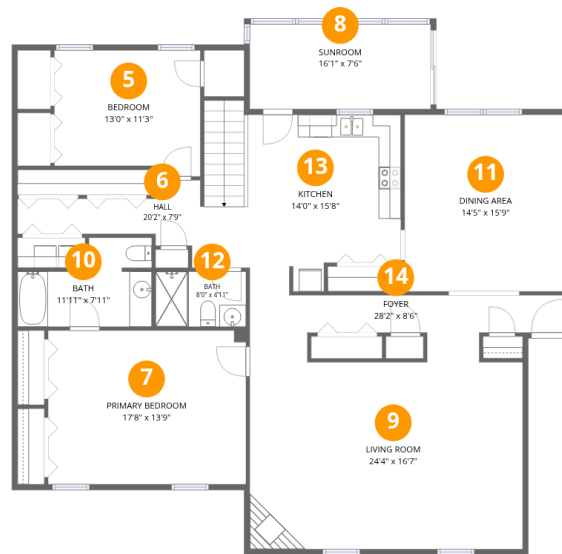
Total:404sqft

Excluded: 169sqft

#		Dimensions	sqft	Counted as living area
1	Utility	11'4" x 19'1"	169 sq. ft	No
2	Hall	3'6" x 13'4"	48 sq. ft	Yes
3	Bath	7'7" x 5'2"	39 sq. ft	Yes
4	Recreation Room	19'2" x 18'6"	303 sq. ft	Yes

## Home data report

**2231 Broadway Avenue Southwest, Roanoke, Virginia 24014,  
United States, Apt D**



## Room dimensions

Floor 2

Total:1815sqft Excluded: 122sqft

#		Dimensions	sqft	Counted as living area
5	Bedroom	13'0" x 11'3"	138 sq. ft	Yes
6	Hall	20'2" x 7'9"	119 sq. ft	Yes
7	Primary Bedroom	17'8" x 13'9"	242 sq. ft	Yes
8	Sunroom	16'1" x 7'6"	122 sq. ft	No
9	Living Room	24'4" x 16'7"	405 sq. ft	Yes
10	Bath	11'11" x 7'11"	75 sq. ft	Yes
11	Dining Area	14'5" x 15'9"	227 sq. ft	Yes
12	Bath	8'0" x 4'11"	40 sq. ft	Yes
13	Kitchen	14'0" x 15'8"	193 sq. ft	Yes
14	Foyer	28'2" x 8'6"	129 sq. ft	Yes

2231 Broadway Avenue Southwest, Roanoke, Virginia 24014,  
United States, Apt D

**1** Floor 1 - Utility

---

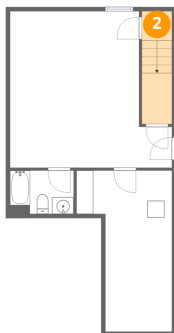


Dimensions: 11'4" x 19'1"  
Area: 169 sq. ft  
Counted as living area: No

Heated: Yes  
Finished: No  
Enclosed: Yes  
Contiguous: Yes  
Permitted: Yes  
Wet space: No  
Addition: No  
Conversion: No

**2** Floor 1 - Hall

---

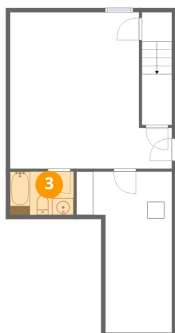


Dimensions: 3'6" x 13'4"  
Area: 48 sq. ft  
Counted as living area: Yes

Heated: Yes  
Finished: Yes  
Enclosed: Yes  
Contiguous: Yes  
Permitted: Yes  
Wet space: No  
Addition: No  
Conversion: No

2231 Broadway Avenue Southwest, Roanoke, Virginia 24014, United States, Apt D

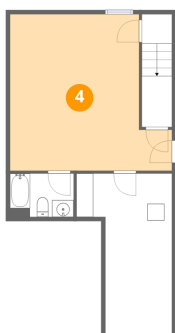
**3** Floor 1 - Bath



Dimensions: 7'7" x 5'2"  
Area: 39 sq. ft  
Counted as living area: Yes

Heated: Yes  
Finished: Yes  
Enclosed: Yes  
Contiguous: Yes  
Permitted: Yes  
Wet space: Yes  
Addition: No  
Conversion: No

**4** Floor 1 - Recreation Room



Dimensions: 19'2" x 18'6"  
Area: 303 sq. ft  
Counted as living area: Yes

Heated: Yes  
Finished: Yes  
Enclosed: Yes  
Contiguous: Yes  
Permitted: Yes  
Wet space: No  
Addition: No  
Conversion: No

**5** Floor 2 - Bedroom

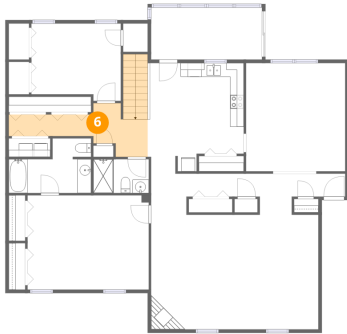


Dimensions: 13'0" x 11'3"  
Area: 138 sq. ft  
Counted as living area: Yes

Heated: Yes  
Finished: Yes  
Enclosed: Yes  
Contiguous: Yes  
Permitted: Yes  
Wet space: No  
Addition: No  
Conversion: No

2231 Broadway Avenue Southwest, Roanoke, Virginia 24014,  
United States, Apt D

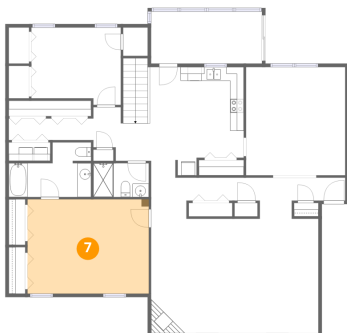
**6** Floor 2 - Hall



Dimensions: 20'2" x 7'9"  
Area: 119 sq. ft  
Counted as living area: Yes

Heated: Yes  
Finished: Yes  
Enclosed: Yes  
Contiguous: Yes  
Permitted: Yes  
Wet space: No  
Addition: No  
Conversion: No

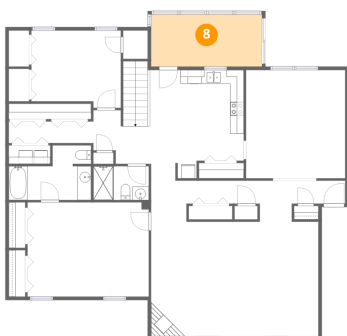
**7** Floor 2 - Primary Bedroom



Dimensions: 17'8" x 13'9"  
Area: 242 sq. ft  
Counted as living area: Yes

Heated: Yes  
Finished: Yes  
Enclosed: Yes  
Contiguous: Yes  
Permitted: Yes  
Wet space: No  
Addition: No  
Conversion: No

**8** Floor 2 - Sunroom



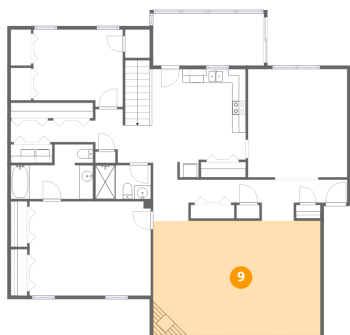
Dimensions: 16'1" x 7'6"  
Area: 122 sq. ft  
Counted as living area: No

Heated: No  
Finished: No  
Enclosed: No  
Contiguous: Yes  
Permitted: Yes  
Wet space: No  
Addition: No  
Conversion: No

2231 Broadway Avenue Southwest, Roanoke, Virginia 24014,  
United States, Apt D

**9** Floor 2 - Living Room

---

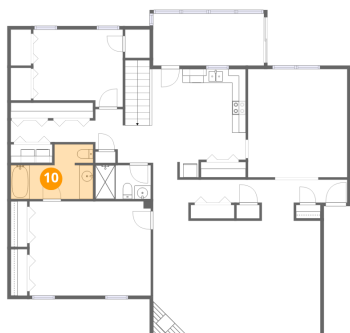


Dimensions: 24'4" x 16'7"  
Area: 405 sq. ft  
Counted as living area: Yes

Heated: Yes  
Finished: Yes  
Enclosed: Yes  
Contiguous: Yes  
Permitted: Yes  
Wet space: No  
Addition: No  
Conversion: No

**10** Floor 2 - Bath

---



Dimensions: 11'11" x 7'11"  
Area: 75 sq. ft  
Counted as living area: Yes

Heated: Yes  
Finished: Yes  
Enclosed: Yes  
Contiguous: Yes  
Permitted: Yes  
Wet space: Yes  
Addition: No  
Conversion: No

**11** Floor 2 - Dining Area

---



Dimensions: 14'5" x 15'9"  
Area: 227 sq. ft  
Counted as living area: Yes

Heated: Yes  
Finished: Yes  
Enclosed: Yes  
Contiguous: Yes  
Permitted: Yes  
Wet space: No  
Addition: No  
Conversion: No

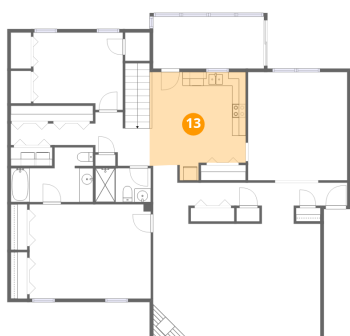
**12** Floor 2 - Bath



Dimensions: 8'0" x 4'11"  
Area: 40 sq. ft  
Counted as living area: Yes

Heated: Yes  
Finished: Yes  
Enclosed: Yes  
Contiguous: Yes  
Permitted: Yes  
Wet space: Yes  
Addition: No  
Conversion: No

**13** Floor 2 - Kitchen



Dimensions: 14'0" x 15'8"  
Area: 193 sq. ft  
Counted as living area: Yes

Heated: Yes  
Finished: Yes  
Enclosed: Yes  
Contiguous: Yes  
Permitted: Yes  
Wet space: No  
Addition: No  
Conversion: No

**14** Floor 2 - Foyer



Dimensions: 28'2" x 8'6"  
Area: 129 sq. ft  
Counted as living area: Yes

Heated: Yes  
Finished: Yes  
Enclosed: Yes  
Contiguous: Yes  
Permitted: Yes  
Wet space: No  
Addition: No  
Conversion: No