

21-1838 Harbour St

Port Coquitlam, BC V3C 1A3

Lower Level Area: 282 SQ.FT.

Main Level Area: 766 SQ.FT.

Upper Level Area: 781 SQ.FT.

Total Area 1,829 SQ.FT.

3



BEDROOMS

3

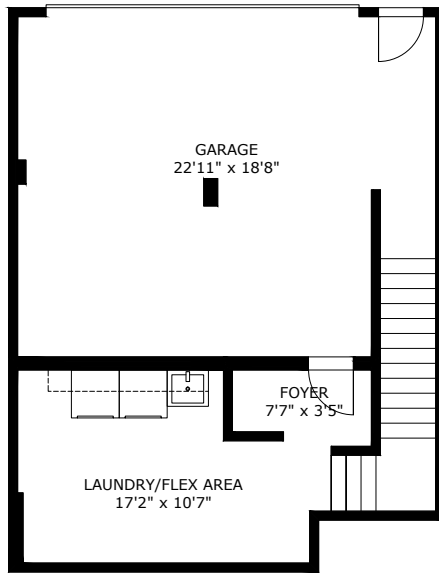


BATHROOMS

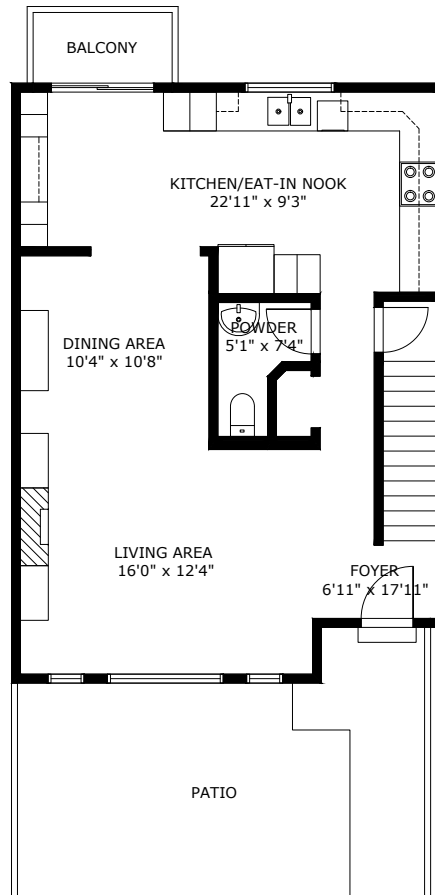
1,829



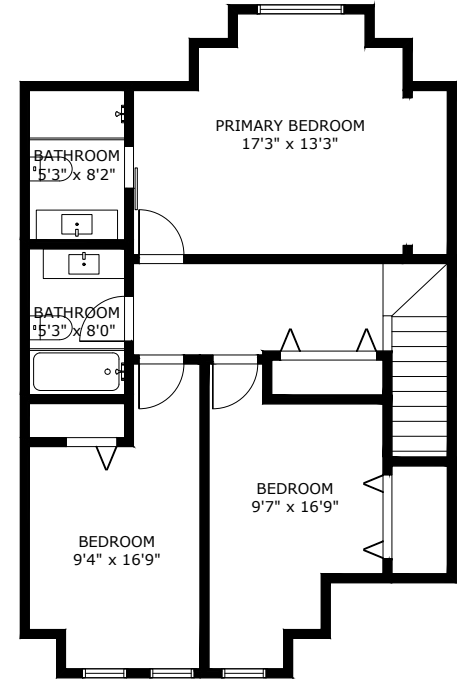
TOTAL SQ.FT.



Lower Level Area:



Main Level Area:



Upper Level Area:

21-1838 HARBOUR ST PORT COQUITLAM V3C 1A3

Measurements are approximate and may not be to scale. Gross measurements provided by agent.
The floor plan illustration is not suitable for construction/architectural purposes.
This communication is not intended to cause or induce breach of an existing agency agreement

3D IMMERSIVE
Tours Photos Floor Plans

Professionally measured by 3D Immersive Marketing Ltd.

Lead Floor Planner: *Sara Alexander*
Quality Assurance: *Diana Gubina*