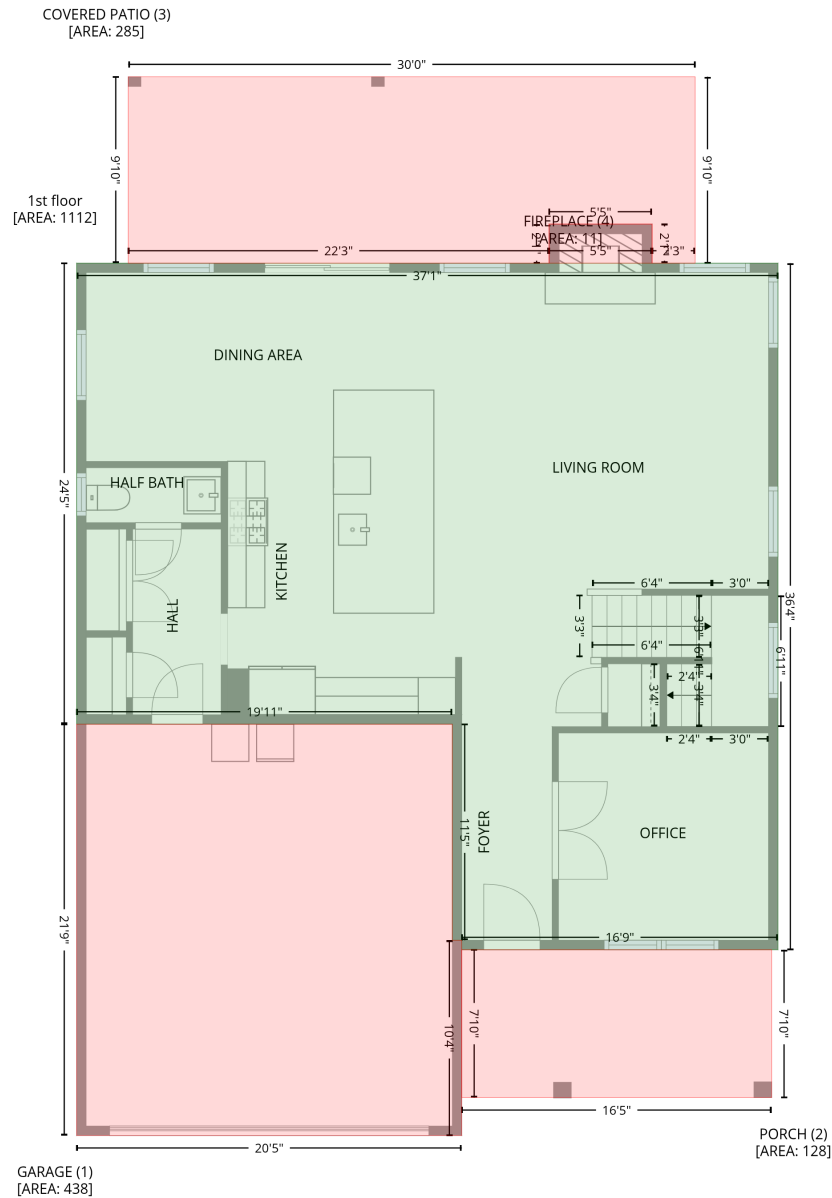


32 Mohegan Way, Greenville, Greenville County, South Carolina, United States, 29607

Gross Living Area: 2461 sq. ft

Level 1



Space	Area (sq. ft)	Calculation
1st floor (Living area)	1112	Coordinate Polygon Area Algorithm using inches $-((535.4 + 535.4) * (270.8 - 707.1) + (535.4 + 334.6) * (707.1 - 707.1) + (334.6 + 334.6) * (707.1 - 707.1) + (334.6 + 328.6) * (707.1 - 701.1) + (328.6 + 328.6) * (701.1 - 563.8) + (328.6 + 90.1) * (563.8 - 563.8) + (90.1 + 90.1) * (563.8 - 270.8) + (90.1 + 535.4) * (270.8 - 270.8)) * 0.5 * 0.00694$
GARAGE (Non-living area)	438	$-((328.6 + 328.6) * (563.8 - 701.1) + (328.6 + 334.6) * (701.1 - 701.1) + (334.6 + 334.6) * (701.1 - 825.2) + (334.6 + 90.1) * (825.2 - 825.2) + (90.1 + 90.1) * (825.2 - 563.8) + (90.1 + 328.6) * (563.8 - 563.8)) * 0.5 * 0.00694$

32 Mohegan Way, Greenville, Greenville County, South Carolina, United States, 29607

Gross Living Area: 2461 sq. ft

Level 1

Space	Area (sq. ft)	Calculation <small>Coordinate Polygon Area Algorithm using inches</small>
PORCH (Non-living area)	128	$-\left((531.4 + 531.4) * (707.1 - 801.1) + (531.4 + 334.6) * (801.1 - 801.1) + (334.6 + 334.6) * (801.1 - 707.1) + (334.6 + 531.4) * (707.1 - 707.1)\right) * 0.5 * 0.00694$
COVERED PATIO (Non-living area)	285	$-\left((482.8 + 482.8) * (152.3 - 270.8) + (482.8 + 455.5) * (270.8 - 270.8) + (455.5 + 455.5) * (270.8 - 246) + (455.5 + 390.1) * (246 - 246) + (390.1 + 390.1) * (246 - 270.8) + (390.1 + 122.8) * (270.8 - 270.8) + (122.8 + 122.8) * (270.8 - 152.3) + (122.8 + 482.8) * (152.3 - 152.3)\right) * 0.5 * 0.00694$
FIREPLACE (Non-living area)	11	$-\left((455.5 + 455.5) * (246 - 270.8) + (455.5 + 390.1) * (270.8 - 270.8) + (390.1 + 390.1) * (270.8 - 246) + (390.1 + 455.5) * (246 - 246)\right) * 0.5 * 0.00694$

32 Mohegan Way, Greenville, Greenville County, South Carolina, United States, 29607

Gross Living Area: 2461 sq. ft

Level 2

2nd floor
[AREA: 1349]



Space	Area (sq. ft)	Calculation <small>Coordinate Polygon Area Algorithm using inches</small>
2nd floor (Living area)	1349	$-((535.4 + 535.4) * (270.8 - 707.1) + (535.4 + 90.1) * (707.1 - 707.1) + (90.1 + 90.1) * (707.1 - 270.8) + (90.1 + 535.4) * (270.8 - 270.8)) * 0.5 * 0.00694$