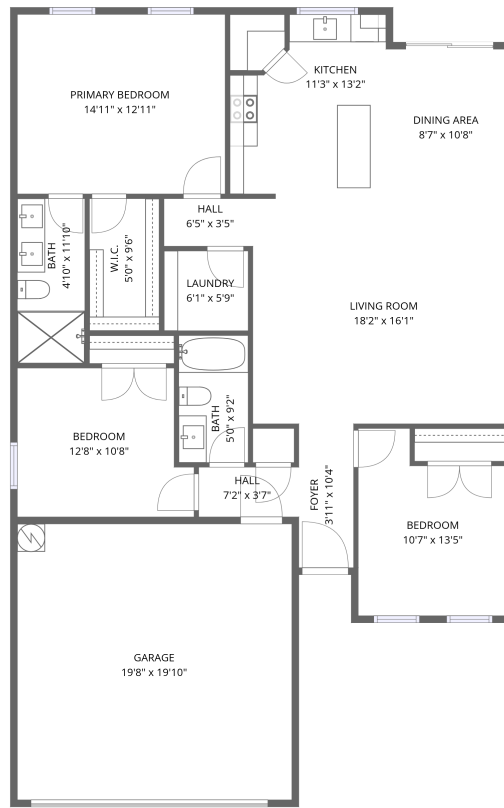


Home data report

1529 Corona Drive, Granbury, Hood County, Texas, United States, 76048



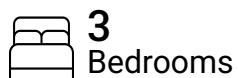
1st floor

Total Area: 1333 sq. ft

1st Floor: 1333 sq. ft

Excluded: Garage 390 sq. ft, Walls: 108 sq. ft

Property summary



Home data report

1529 Corona Drive, Granbury, Hood County, Texas, United States, 76048



Room dimensions

Floor 1

Total:1333sqft Excluded: 390sqft

#		Dimensions	sqft	Counted as living area
1	Kitchen	11'3" x 13'2"	148 sq. ft	Yes
2	Primary Bedroom	14'11" x 12'11"	192 sq. ft	Yes
3	Foyer	3'11" x 10'4"	41 sq. ft	Yes
4	Living Room	18'2" x 16'1"	292 sq. ft	Yes
5	Bath	5'0" x 9'2"	45 sq. ft	Yes
6	Hall	7'2" x 3'7"	26 sq. ft	Yes
7	Garage	19'8" x 19'10"	390 sq. ft	No
8	Bath	4'10" x 11'10"	57 sq. ft	Yes
9	Bedroom	10'7" x 13'5"	142 sq. ft	Yes
10	Bedroom	12'8" x 10'8"	136 sq. ft	Yes
11	W.I.C.	5'0" x 9'6"	47 sq. ft	Yes

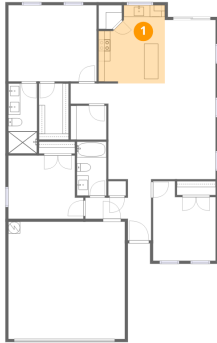
Home data report

1529 Corona Drive, Granbury, Hood County, Texas, United States, 76048

#		Dimensions	sqft	Counted as living area
12	Hall	6'5" x 3'5"	22 sq. ft	Yes
13	Laundry	6'1" x 5'9"	35 sq. ft	Yes
14	Dining Area	8'7" x 10'8"	92 sq. ft	Yes

1529 Corona Drive, Granbury, Hood County, Texas, United States, 76048

1 Floor 1 - Kitchen



Dimensions: 11'3" x 13'2"
Area: 148 sq. ft
Counted as living area: Yes

Heated: Yes
Finished: Yes
Enclosed: Yes
Contiguous: Yes
Permitted: Yes
Wet space: No
Addition: No
Conversion: No

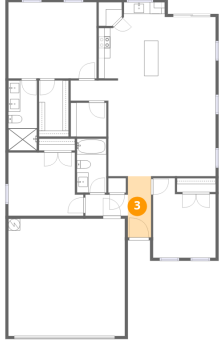
2 Floor 1 - Primary Bedroom



Dimensions: 14'11" x 12'11"
Area: 192 sq. ft
Counted as living area: Yes

Heated: Yes
Finished: Yes
Enclosed: Yes
Contiguous: Yes
Permitted: Yes
Wet space: No
Addition: No
Conversion: No

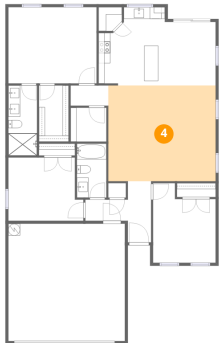
3 Floor 1 - Foyer



Dimensions: 3'11" x 10'4"
Area: 41 sq. ft
Counted as living area: Yes

Heated: Yes
Finished: Yes
Enclosed: Yes
Contiguous: Yes
Permitted: Yes
Wet space: No
Addition: No
Conversion: No

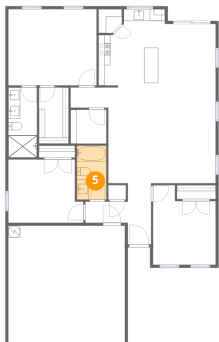
4 Floor 1 - Living Room



Dimensions: 18'2" x 16'1"
Area: 292 sq. ft
Counted as living area: Yes

Heated: Yes
Finished: Yes
Enclosed: Yes
Contiguous: Yes
Permitted: Yes
Wet space: No
Addition: No
Conversion: No

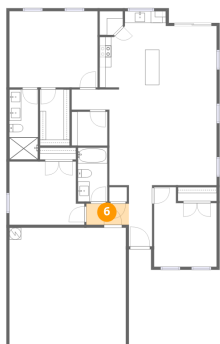
5 Floor 1 - Bath



Dimensions: 5'0" x 9'2"
Area: 45 sq. ft
Counted as living area: Yes

Heated: Yes
Finished: Yes
Enclosed: Yes
Contiguous: Yes
Permitted: Yes
Wet space: Yes
Addition: No
Conversion: No

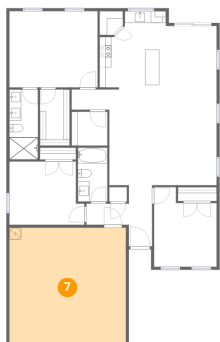
6 Floor 1 - Hall



Dimensions: 7'2" x 3'7"
Area: 26 sq. ft
Counted as living area: Yes

Heated: Yes
Finished: Yes
Enclosed: Yes
Contiguous: Yes
Permitted: Yes
Wet space: No
Addition: No
Conversion: No

7 Floor 1 - Garage



Dimensions: 19'8" x 19'10"
Area: 390 sq. ft
Counted as living area: No

Heated: No
Finished: No
Enclosed: Yes
Contiguous: Yes
Permitted: Yes
Wet space: No
Addition: No
Conversion: No

8 Floor 1 - Bath

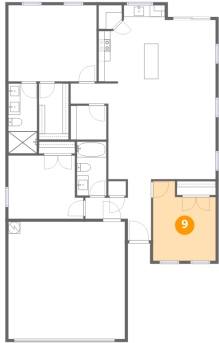


Dimensions: 4'10" x 11'10"
Area: 57 sq. ft
Counted as living area: Yes

Heated: Yes
Finished: Yes
Enclosed: Yes
Contiguous: Yes
Permitted: Yes
Wet space: Yes
Addition: No
Conversion: No

1529 Corona Drive, Granbury, Hood County, Texas, United States, 76048

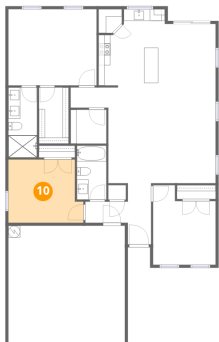
9 Floor 1 - Bedroom



Dimensions: 10'7" x 13'5"
Area: 142 sq. ft
Counted as living area: Yes

Heated: Yes
Finished: Yes
Enclosed: Yes
Contiguous: Yes
Permitted: Yes
Wet space: No
Addition: No
Conversion: No

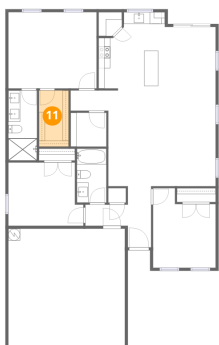
10 Floor 1 - Bedroom



Dimensions: 12'8" x 10'8"
Area: 136 sq. ft
Counted as living area: Yes

Heated: Yes
Finished: Yes
Enclosed: Yes
Contiguous: Yes
Permitted: Yes
Wet space: No
Addition: No
Conversion: No

11 Floor 1 - W.I.C.



Dimensions: 5'0" x 9'6"
Area: 47 sq. ft
Counted as living area: Yes

Heated: Yes
Finished: Yes
Enclosed: Yes
Contiguous: Yes
Permitted: Yes
Wet space: No
Addition: No
Conversion: No

1529 Corona Drive, Granbury, Hood County, Texas, United States, 76048

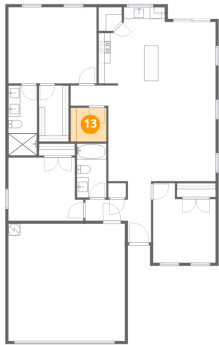
12 Floor 1 - Hall



Dimensions: 6'5" x 3'5"
Area: 22 sq. ft
Counted as living area: Yes

Heated: Yes
Finished: Yes
Enclosed: Yes
Contiguous: Yes
Permitted: Yes
Wet space: No
Addition: No
Conversion: No

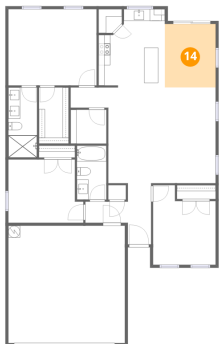
13 Floor 1 - Laundry



Dimensions: 6'1" x 5'9"
Area: 35 sq. ft
Counted as living area: Yes

Heated: Yes
Finished: Yes
Enclosed: Yes
Contiguous: Yes
Permitted: Yes
Wet space: No
Addition: No
Conversion: No

14 Floor 1 - Dining Area



Dimensions: 8'7" x 10'8"
Area: 92 sq. ft
Counted as living area: Yes

Heated: Yes
Finished: Yes
Enclosed: Yes
Contiguous: Yes
Permitted: Yes
Wet space: No
Addition: No
Conversion: No