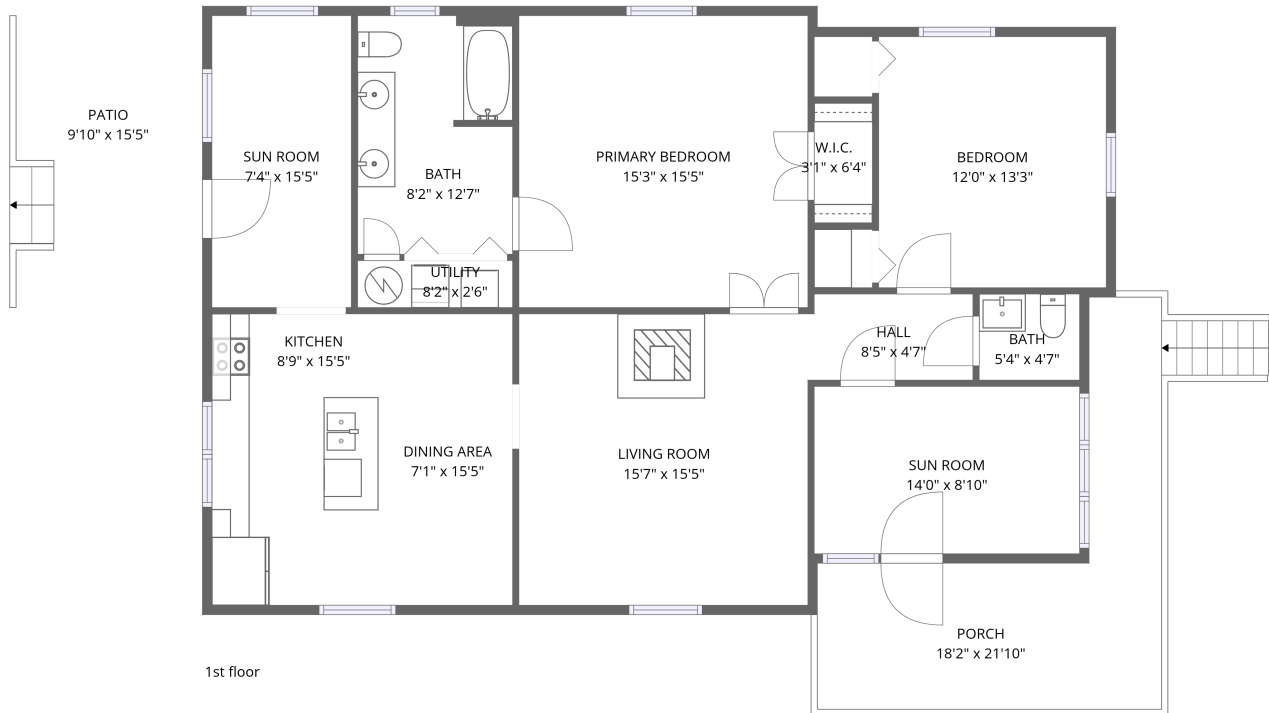


Home data report

212 South Piedmont Street, Calhoun, Gordon County, Georgia,
United States, 30701



Total Area: 1395 sq. ft

1st Floor: 1395 sq. ft

Excluded: Patio 151 sq. ft, Porch 207 sq. ft, Walls: 79 sq. ft

Property summary

 **1** Floors

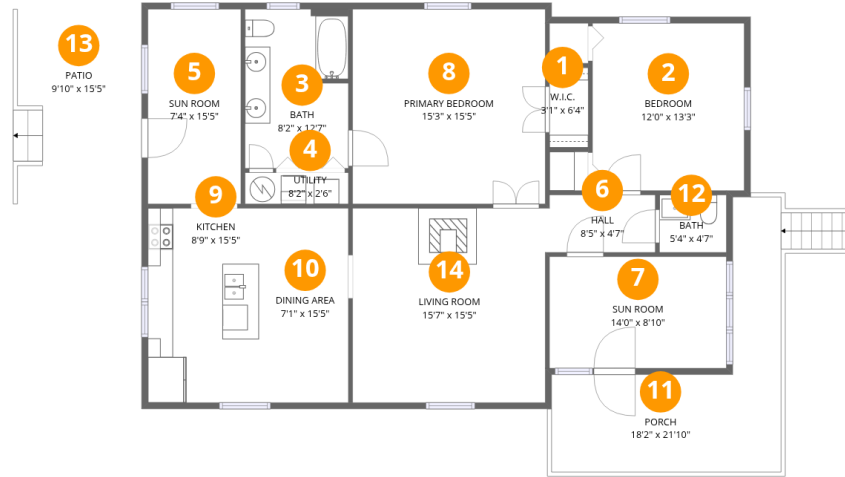
 **2** Bedrooms

 **1** Bathrooms

 **1** Half baths

Home data report

212 South Piedmont Street, Calhoun, Gordon County, Georgia, United States, 30701



Room dimensions

Floor 1

Total:1395sqft

Excluded: 358sqft

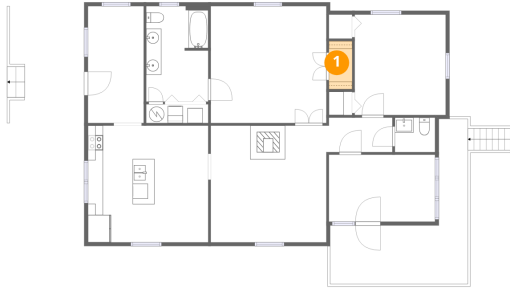
#		Dimensions	sqft	Counted as living area
1	W.I.C.	3'1" x 6'4"	20 sq. ft	Yes
2	Bedroom	12'0" x 13'3"	160 sq. ft	Yes
3	Bath	8'2" x 12'7"	103 sq. ft	Yes
4	Utility	8'2" x 2'6"	20 sq. ft	Yes
5	Sun Room	7'4" x 15'5"	114 sq. ft	Yes
6	Hall	8'5" x 4'7"	38 sq. ft	Yes
7	Sun Room	14'0" x 8'10"	124 sq. ft	Yes
8	Primary Bedroom	15'3" x 15'5"	236 sq. ft	Yes
9	Kitchen	8'9" x 15'5"	135 sq. ft	Yes
10	Dining Area	7'1" x 15'5"	110 sq. ft	Yes
11	Porch	18'2" x 21'10"	397 sq. ft	No

Home data report

**212 South Piedmont Street, Calhoun, Gordon County, Georgia,
United States, 30701**

#		Dimensions	sqft	Counted as living area
12	Bath	5'4" x 4'7"	24 sq. ft	Yes
13	Patio	9'10" x 15'5"	152 sq. ft	No
14	Living Room	15'7" x 15'5"	240 sq. ft	Yes

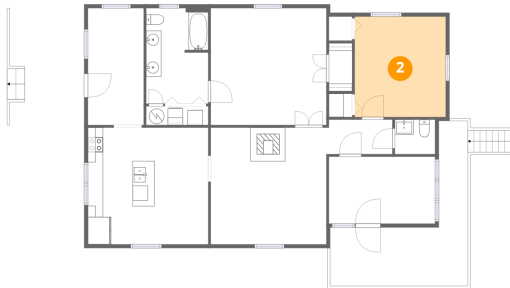
1 Floor 1 - W.I.C.



Dimensions: 3'1" x 6'4"
Area: 20 sq. ft
Counted as living area: Yes

Heated: Yes
Finished: Yes
Enclosed: Yes
Contiguous: Yes
Permitted: Yes
Wet space: No
Addition: No
Conversion: No

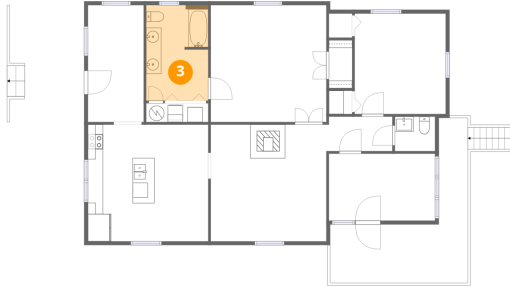
2 Floor 1 - Bedroom



Dimensions: 12'0" x 13'3"
Area: 160 sq. ft
Counted as living area: Yes

Heated: Yes
Finished: Yes
Enclosed: Yes
Contiguous: Yes
Permitted: Yes
Wet space: No
Addition: No
Conversion: No

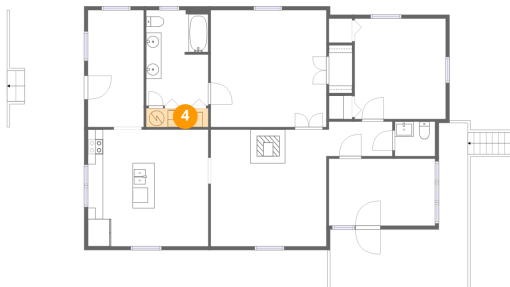
3 Floor 1 - Bath



Dimensions: 8'2" x 12'7"
Area: 103 sq. ft
Counted as living area: Yes

Heated: Yes
Finished: Yes
Enclosed: Yes
Contiguous: Yes
Permitted: Yes
Wet space: Yes
Addition: No
Conversion: No

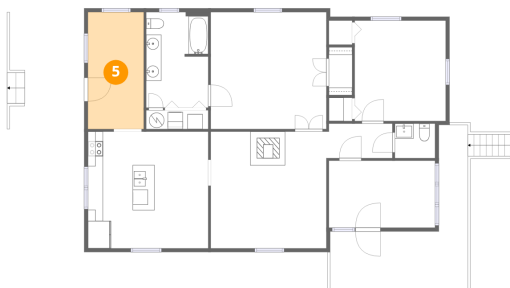
4 Floor 1 - Utility



Dimensions: 8'2" x 2'6"
Area: 20 sq. ft
Counted as living area: Yes

Heated: Yes
Finished: Yes
Enclosed: Yes
Contiguous: Yes
Permitted: Yes
Wet space: No
Addition: No
Conversion: No

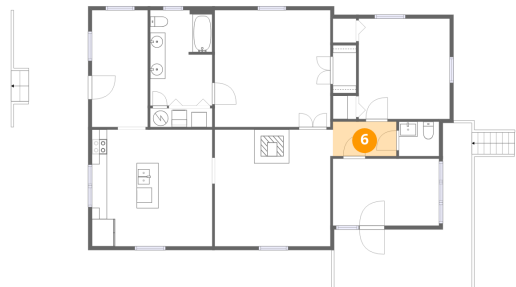
5 Floor 1 - Sun Room



Dimensions: 7'4" x 15'5"
Area: 114 sq. ft
Counted as living area: Yes

Heated: Yes
Finished: Yes
Enclosed: Yes
Contiguous: Yes
Permitted: Yes
Wet space: No
Addition: No
Conversion: No

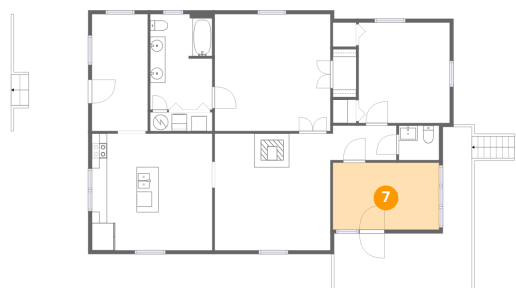
6 Floor 1 - Hall



Dimensions: 8'5" x 4'7"
Area: 38 sq. ft
Counted as living area: Yes

Heated: Yes
Finished: Yes
Enclosed: Yes
Contiguous: Yes
Permitted: Yes
Wet space: No
Addition: No
Conversion: No

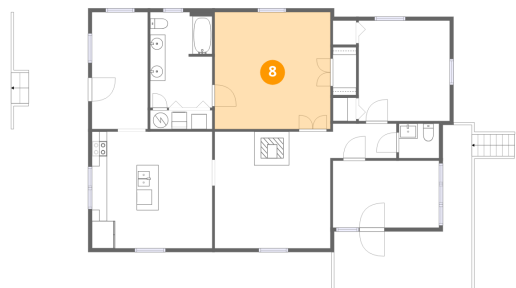
7 Floor 1 - Sun Room



Dimensions: 14'0" x 8'10"
Area: 124 sq. ft
Counted as living area: Yes

Heated: Yes
Finished: Yes
Enclosed: Yes
Contiguous: Yes
Permitted: Yes
Wet space: No
Addition: No
Conversion: No

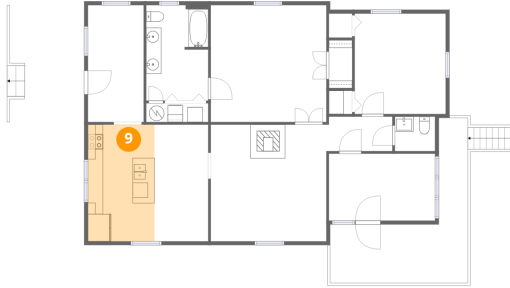
8 Floor 1 - Primary Bedroom



Dimensions: 15'3" x 15'5"
Area: 236 sq. ft
Counted as living area: Yes

Heated: Yes
Finished: Yes
Enclosed: Yes
Contiguous: Yes
Permitted: Yes
Wet space: No
Addition: No
Conversion: No

9 Floor 1 - Kitchen



Dimensions: 8'9" x 15'5"
Area: 135 sq. ft
Counted as living area: Yes

Heated: Yes
Finished: Yes
Enclosed: Yes
Contiguous: Yes
Permitted: Yes
Wet space: No
Addition: No
Conversion: No

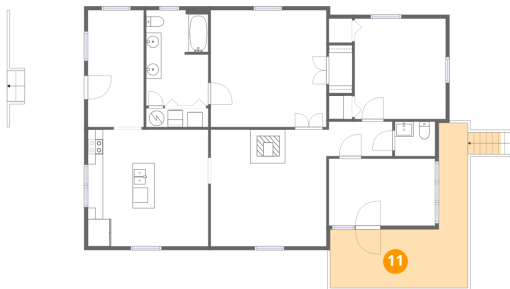
10 Floor 1 - Dining Area



Dimensions: 7'1" x 15'5"
Area: 110 sq. ft
Counted as living area: Yes

Heated: Yes
Finished: Yes
Enclosed: Yes
Contiguous: Yes
Permitted: Yes
Wet space: No
Addition: No
Conversion: No

11 Floor 1 - Porch



Dimensions: 18'2" x 21'10"
Area: 397 sq. ft
Counted as living area: No

Heated: No
Finished: No
Enclosed: No
Contiguous: Yes
Permitted: Yes
Wet space: No
Addition: No
Conversion: No

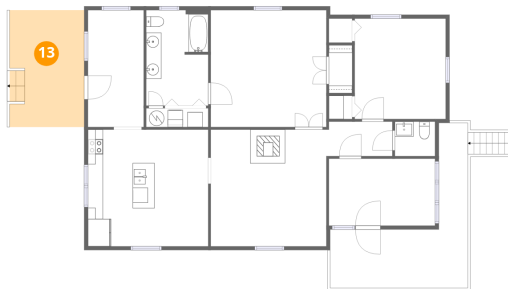
12 Floor 1 - Bath



Dimensions: 5'4" x 4'7"
Area: 24 sq. ft
Counted as living area: Yes

Heated: Yes
Finished: Yes
Enclosed: Yes
Contiguous: Yes
Permitted: Yes
Wet space: Yes
Addition: No
Conversion: No

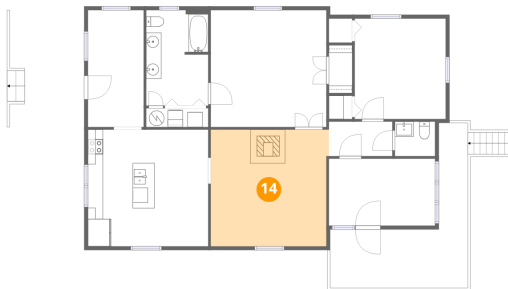
13 Floor 1 - Patio



Dimensions: 9'10" x 15'5"
Area: 152 sq. ft
Counted as living area: No

Heated: No
Finished: No
Enclosed: No
Contiguous: Yes
Permitted: Yes
Wet space: No
Addition: No
Conversion: No

14 Floor 1 - Living Room



Dimensions: 15'7" x 15'5"
Area: 240 sq. ft
Counted as living area: Yes

Heated: Yes
Finished: Yes
Enclosed: Yes
Contiguous: Yes
Permitted: Yes
Wet space: No
Addition: No
Conversion: No