

Home data report

7020 Debold Road, Sabillasville, Frederick County, Maryland,
United States, 21780



Total Area: 4636 sq. ft

Below Ground: 1723 sq. ft, 1st Floor: 1956 sq. ft, 2nd Floor: 957 sq. ft

Excluded: Utility 37 sq. ft, Storage 133 sq. ft, Garage 655 sq. ft, Porch 444 sq. ft, Fireplace 13 sq. ft, Low ceiling 599 sq. ft, Open to below 274 sq. ft, Stairwell 43 sq. ft, Attic 423 sq. ft, Walls: 371 sq. ft

Property summary

**3**
Floors

**4**
Bedrooms

**4**
Bathrooms

Home data report

**7020 Debold Road, Sabillasville, Frederick County, Maryland,
United States, 21780**



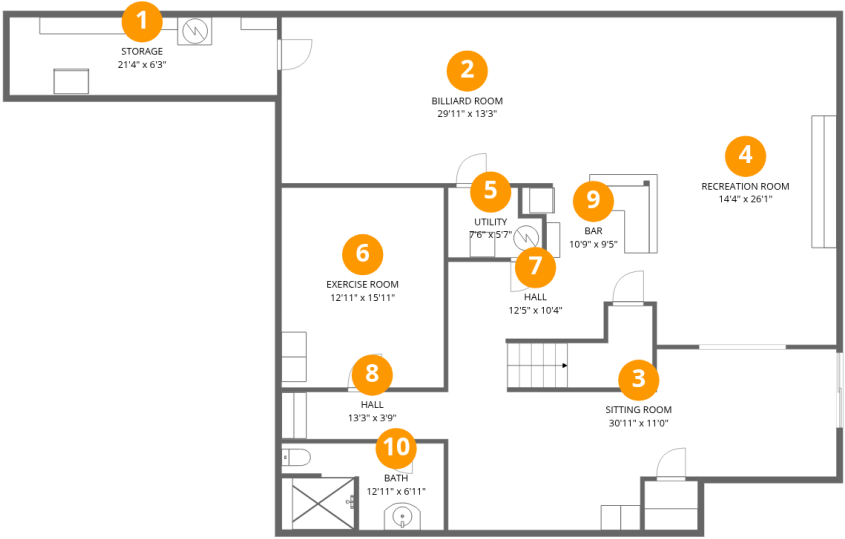
1
Half baths



1
Garages

Home data report

7020 Debold Road, Sabillasville, Frederick County, Maryland,
United States, 21780



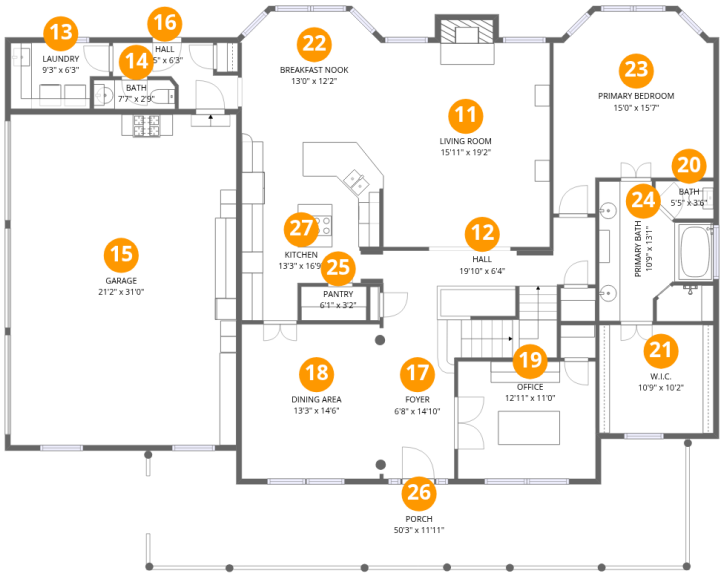
Room dimensions

Floor 1 Below grade Total:1723sqft Excluded: 170sqft

#		Dimensions	sqft	Counted as living area
1	Storage	21'4" x 6'3"	133 sq. ft	No
2	Billiard Room	29'11" x 13'3"	395 sq. ft	Yes
3	Sitting Room	30'11" x 11'0"	323 sq. ft	Yes
4	Recreation Room	14'4" x 26'1"	374 sq. ft	Yes
5	Utility	7'6" x 5'7"	37 sq. ft	No
6	Exercise Room	12'11" x 15'11"	206 sq. ft	Yes
7	Hall	12'5" x 10'4"	106 sq. ft	Yes
8	Hall	13'3" x 3'9"	50 sq. ft	Yes
9	Bar	10'9" x 9'5"	79 sq. ft	Yes
10	Bath	12'11" x 6'11"	87 sq. ft	Yes

Home data report

7020 Debold Road, Sabillasville, Frederick County, Maryland,
United States, 21780



Room dimensions

Floor 2 Total:1956sqft Excluded: 1112sqft

#		Dimensions	sqft	Counted as living area
11	Living Room	15'11" x 19'2"	312 sq. ft	Yes
12	Hall	19'10" x 6'4"	138 sq. ft	Yes
13	Laundry	9'3" x 6'3"	52 sq. ft	Yes
14	Bath	7'7" x 2'9"	21 sq. ft	Yes
15	Garage	21'2" x 31'0"	655 sq. ft	No
16	Hall	9'5" x 6'3"	47 sq. ft	Yes
17	Foyer	6'8" x 14'10"	121 sq. ft	Yes
18	Dining Area	13'3" x 14'6"	192 sq. ft	Yes
19	Office	12'11" x 11'0"	142 sq. ft	Yes
20	Bath	5'5" x 3'6"	17 sq. ft	Yes
21	W.I.C.	10'9" x 10'2"	109 sq. ft	Yes

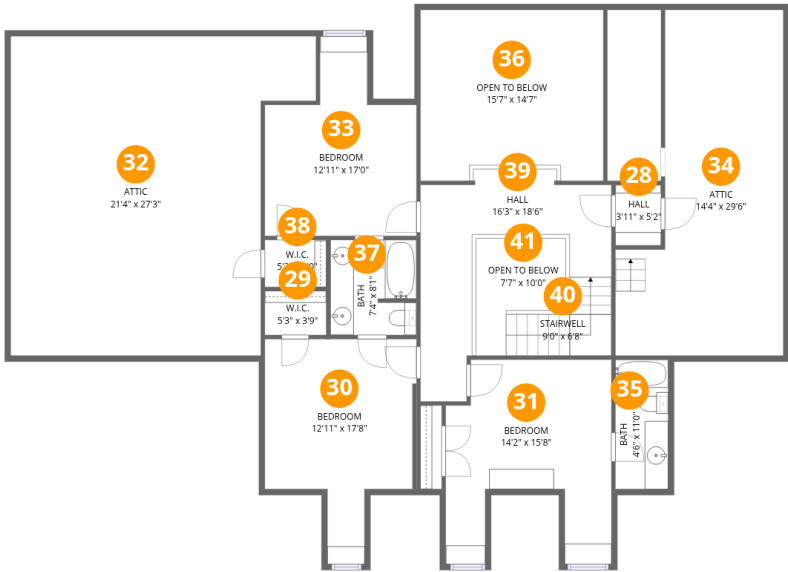
Home data report

**7020 Debold Road, Sabillasville, Frederick County, Maryland,
United States, 21780**

#		Dimensions	sqft	Counted as living area
22	Breakfast Nook	13'0" x 12'2"	151 sq. ft	Yes
23	Primary Bedroom	15'0" x 15'7"	234 sq. ft	Yes
24	Primary Bath	10'9" x 13'1"	118 sq. ft	Yes
25	Pantry	6'1" x 3'2"	19 sq. ft	Yes
26	Porch	50'3" x 11'11"	444 sq. ft	No
27	Kitchen	13'3" x 16'9"	191 sq. ft	Yes

Home data report

7020 Debold Road, Sabillasville, Frederick County, Maryland,
United States, 21780



Room dimensions

Floor 3 Total:957sqft Excluded: 1339sqft

#		Dimensions	sqft	Counted as living area
28	Hall	3'11" x 5'2"	20 sq. ft	Yes
29	W.I.C.	5'3" x 3'9"	20 sq. ft	Yes
30	Bedroom	12'11" x 17'8"	186 sq. ft	Yes
31	Bedroom	14'2" x 15'8"	195 sq. ft	Yes
32	Attic	21'4" x 27'3"	281 sq. ft	No
33	Bedroom	12'11" x 17'0"	157 sq. ft	Yes
34	Attic	14'4" x 29'6"	142 sq. ft	No
35	Bath	4'6" x 11'0"	50 sq. ft	Yes
36	Open To Below	15'7" x 14'7"	217 sq. ft	No
37	Bath	7'4" x 8'1"	59 sq. ft	Yes
38	W.I.C.	5'3" x 4'0"	21 sq. ft	Yes

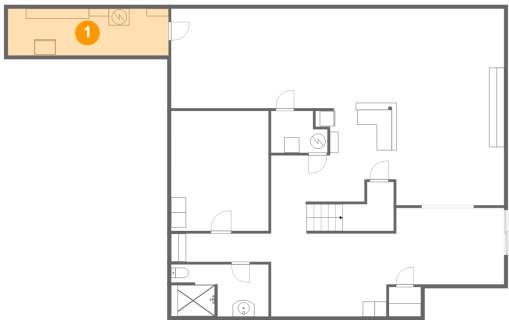
Home data report

7020 Debold Road, Sabillasville, Frederick County, Maryland,
United States, 21780

#		Dimensions	sqft	Counted as living area
39	Hall	16'3" x 18'6"	165 sq. ft	Yes
40	Stairwell	9'0" x 6'8"	43 sq. ft	No
41	Open To Below	7'7" x 10'0"	57 sq. ft	No

7020 Debold Road, Sabillasville, Frederick County, Maryland,
United States, 21780

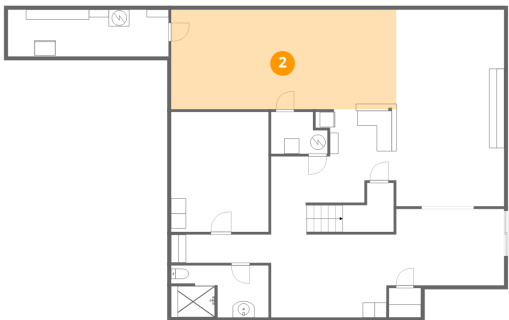
1 Floor 1 - Storage



Dimensions: 21'4" x 6'3"
Area: 133 sq. ft
Counted as living area: No

Heated: No
Finished: No
Enclosed: No
Contiguous: Yes
Permitted: Yes
Wet space: No
Addition: No
Conversion: No

2 Floor 1 - Billiard Room



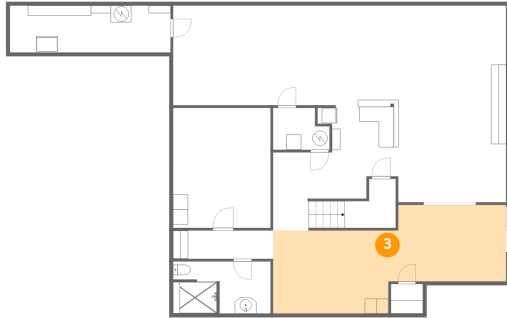
Dimensions: 29'11" x 13'3"
Area: 395 sq. ft
Counted as living area: Yes

Heated: Yes
Finished: Yes
Enclosed: Yes
Contiguous: Yes
Permitted: Yes
Wet space: No
Addition: No
Conversion: No

Home data report

7020 Debold Road, Sabillasville, Frederick County, Maryland,
United States, 21780

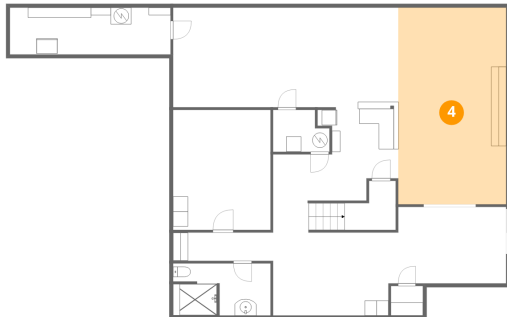
3 Floor 1 - Sitting Room



Dimensions: 30'11" x 11'0"
Area: 323 sq. ft
Counted as living area: Yes

Heated: Yes
Finished: Yes
Enclosed: Yes
Contiguous: Yes
Permitted: Yes
Wet space: No
Addition: No
Conversion: No

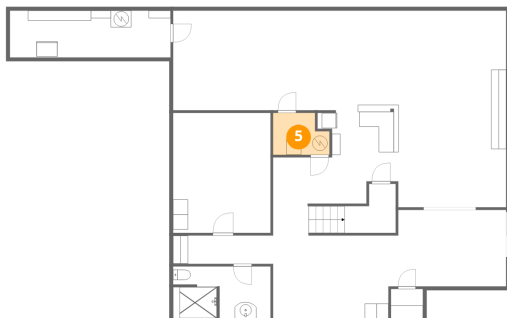
4 Floor 1 - Recreation Room



Dimensions: 14'4" x 26'1"
Area: 374 sq. ft
Counted as living area: Yes

Heated: Yes
Finished: Yes
Enclosed: Yes
Contiguous: Yes
Permitted: Yes
Wet space: No
Addition: No
Conversion: No

5 Floor 1 - Utility

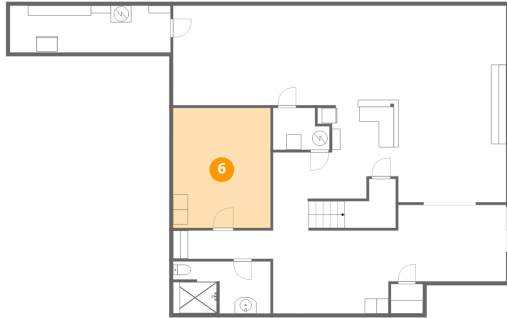


Dimensions: 7'6" x 5'7"
Area: 37 sq. ft
Counted as living area: No

Heated: Yes
Finished: No
Enclosed: Yes
Contiguous: Yes
Permitted: Yes
Wet space: No
Addition: No
Conversion: No

7020 Debold Road, Sabillasville, Frederick County, Maryland,
United States, 21780

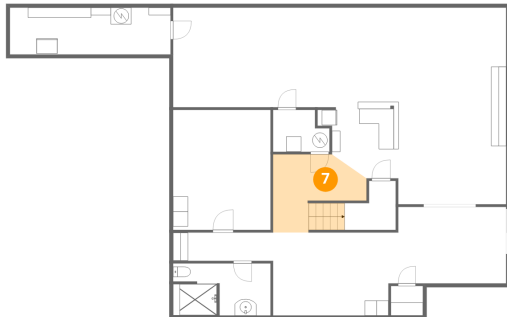
6 Floor 1 - Exercise Room



Dimensions: 12'11" x 15'11"
Area: 206 sq. ft
Counted as living area: Yes

Heated: Yes
Finished: Yes
Enclosed: Yes
Contiguous: Yes
Permitted: Yes
Wet space: No
Addition: No
Conversion: No

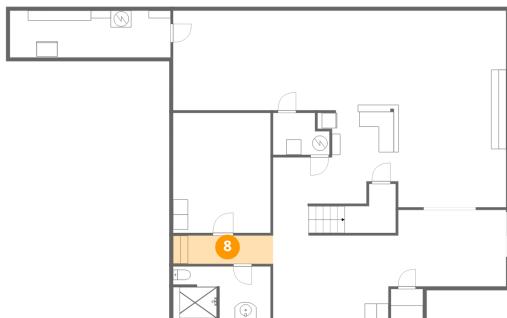
7 Floor 1 - Hall



Dimensions: 12'5" x 10'4"
Area: 106 sq. ft
Counted as living area: Yes

Heated: Yes
Finished: Yes
Enclosed: Yes
Contiguous: Yes
Permitted: Yes
Wet space: No
Addition: No
Conversion: No

8 Floor 1 - Hall



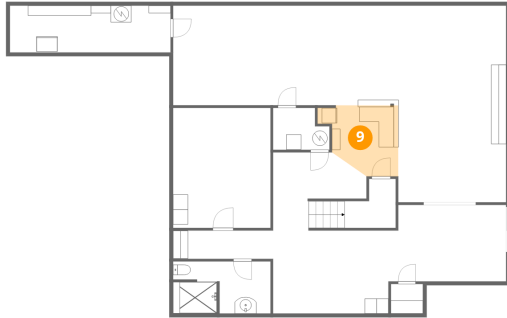
Dimensions: 13'3" x 3'9"
Area: 50 sq. ft
Counted as living area: Yes

Heated: Yes
Finished: Yes
Enclosed: Yes
Contiguous: Yes
Permitted: Yes
Wet space: No
Addition: No
Conversion: No

Home data report

7020 Debold Road, Sabillasville, Frederick County, Maryland,
United States, 21780

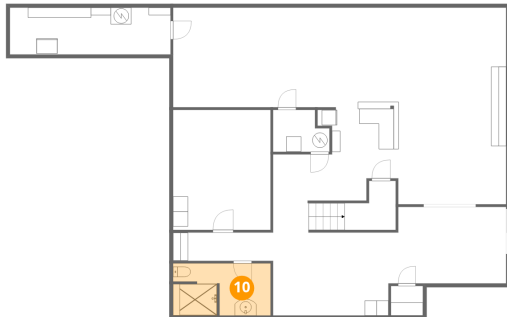
9 Floor 1 - Bar



Dimensions: 10'9" x 9'5"
Area: 79 sq. ft
Counted as living area: Yes

Heated: Yes
Finished: Yes
Enclosed: Yes
Contiguous: Yes
Permitted: Yes
Wet space: No
Addition: No
Conversion: No

10 Floor 1 - Bath



Dimensions: 12'11" x 6'11"
Area: 87 sq. ft
Counted as living area: Yes

Heated: Yes
Finished: Yes
Enclosed: Yes
Contiguous: Yes
Permitted: Yes
Wet space: Yes
Addition: No
Conversion: No

11 Floor 2 - Living Room

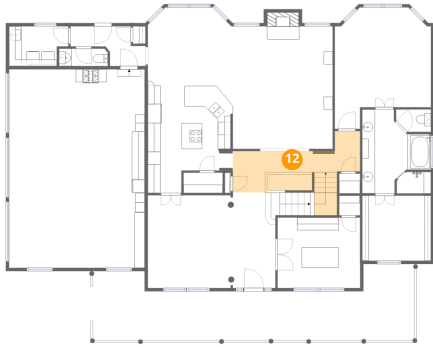


Dimensions: 15'11" x 19'2"
Area: 312 sq. ft
Counted as living area: Yes

Heated: Yes
Finished: Yes
Enclosed: Yes
Contiguous: Yes
Permitted: Yes
Wet space: No
Addition: No
Conversion: No

7020 Debold Road, Sabillasville, Frederick County, Maryland,
United States, 21780

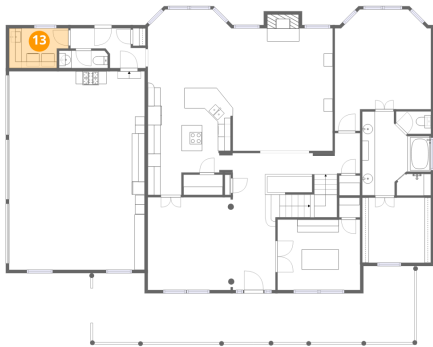
12 Floor 2 - Hall



Dimensions: 19'10" x 6'4"
Area: 138 sq. ft
Counted as living area: Yes

Heated: Yes
Finished: Yes
Enclosed: Yes
Contiguous: Yes
Permitted: Yes
Wet space: No
Addition: No
Conversion: No

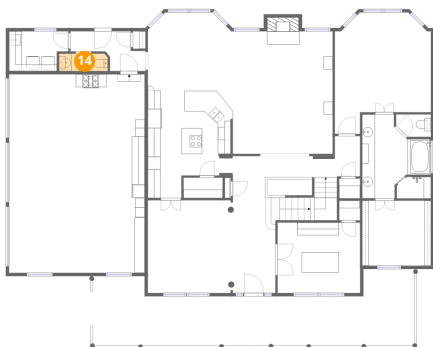
13 Floor 2 - Laundry



Dimensions: 9'3" x 6'3"
Area: 52 sq. ft
Counted as living area: Yes

Heated: Yes
Finished: Yes
Enclosed: Yes
Contiguous: Yes
Permitted: Yes
Wet space: No
Addition: No
Conversion: No

14 Floor 2 - Bath

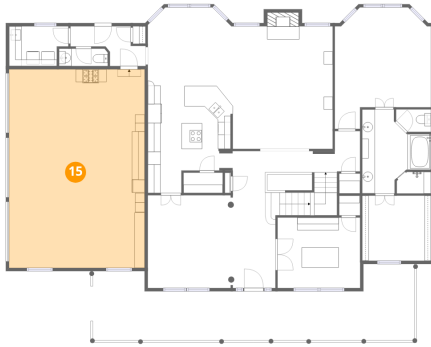


Dimensions: 7'7" x 2'9"
Area: 21 sq. ft
Counted as living area: Yes

Heated: Yes
Finished: Yes
Enclosed: Yes
Contiguous: Yes
Permitted: Yes
Wet space: Yes
Addition: No
Conversion: No

7020 Debold Road, Sabillasville, Frederick County, Maryland,
United States, 21780

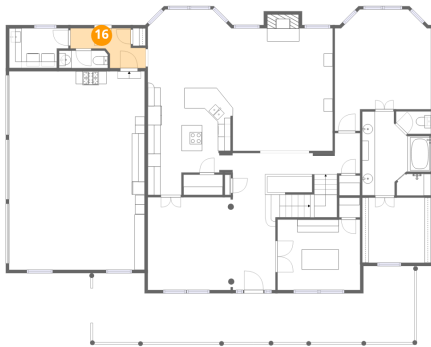
15 Floor 2 - Garage



Dimensions: 21'2" x 31'0"
Area: 655 sq. ft
Counted as living area: No

Heated: No
Finished: No
Enclosed: Yes
Contiguous: Yes
Permitted: Yes
Wet space: No
Addition: No
Conversion: No

16 Floor 2 - Hall



Dimensions: 9'5" x 6'3"
Area: 47 sq. ft
Counted as living area: Yes

Heated: Yes
Finished: Yes
Enclosed: Yes
Contiguous: Yes
Permitted: Yes
Wet space: No
Addition: No
Conversion: No

17 Floor 2 - Foyer

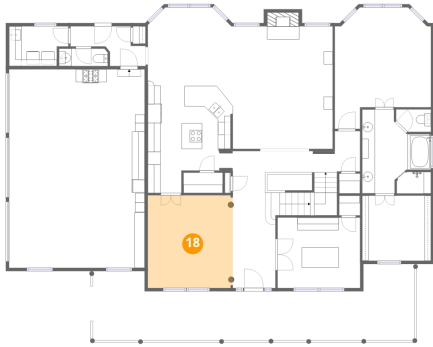


Dimensions: 6'8" x 14'10"
Area: 121 sq. ft
Counted as living area: Yes

Heated: Yes
Finished: Yes
Enclosed: Yes
Contiguous: Yes
Permitted: Yes
Wet space: No
Addition: No
Conversion: No

7020 Debold Road, Sabillasville, Frederick County, Maryland,
United States, 21780

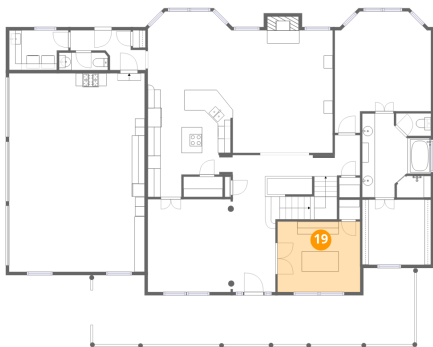
18 Floor 2 - Dining Area



Dimensions: 13'3" x 14'6"
Area: 192 sq. ft
Counted as living area: Yes

Heated: Yes
Finished: Yes
Enclosed: Yes
Contiguous: Yes
Permitted: Yes
Wet space: No
Addition: No
Conversion: No

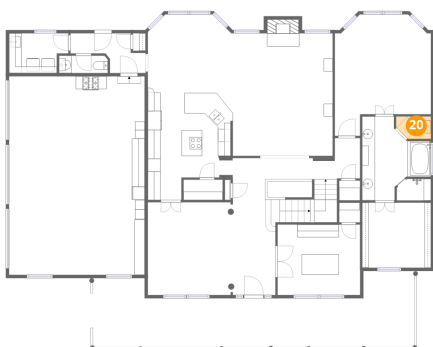
19 Floor 2 - Office



Dimensions: 12'11" x 11'0"
Area: 142 sq. ft
Counted as living area: Yes

Heated: Yes
Finished: Yes
Enclosed: Yes
Contiguous: Yes
Permitted: Yes
Wet space: No
Addition: No
Conversion: No

20 Floor 2 - Bath



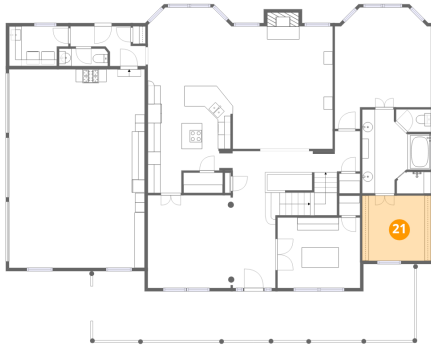
Dimensions: 5'5" x 3'6"
Area: 17 sq. ft
Counted as living area: Yes

Heated: Yes
Finished: Yes
Enclosed: Yes
Contiguous: Yes
Permitted: Yes
Wet space: Yes
Addition: No
Conversion: No

Home data report

7020 Debold Road, Sabillasville, Frederick County, Maryland,
United States, 21780

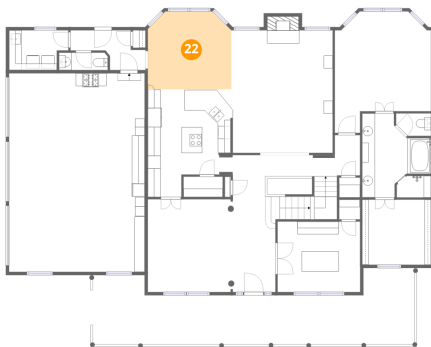
21 Floor 2 - W.I.C.



Dimensions: 10'9" x 10'2"
Area: 109 sq. ft
Counted as living area: Yes

Heated: Yes
Finished: Yes
Enclosed: Yes
Contiguous: Yes
Permitted: Yes
Wet space: No
Addition: No
Conversion: No

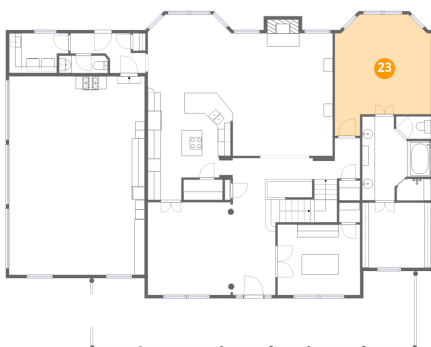
22 Floor 2 - Breakfast Nook



Dimensions: 13'0" x 12'2"
Area: 151 sq. ft
Counted as living area: Yes

Heated: Yes
Finished: Yes
Enclosed: Yes
Contiguous: Yes
Permitted: Yes
Wet space: No
Addition: No
Conversion: No

23 Floor 2 - Primary Bedroom

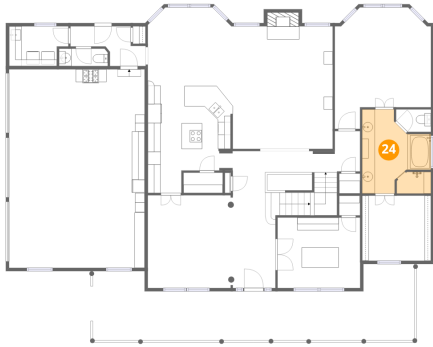


Dimensions: 15'0" x 15'7"
Area: 234 sq. ft
Counted as living area: Yes

Heated: Yes
Finished: Yes
Enclosed: Yes
Contiguous: Yes
Permitted: Yes
Wet space: No
Addition: No
Conversion: No

7020 Debold Road, Sabillasville, Frederick County, Maryland,
United States, 21780

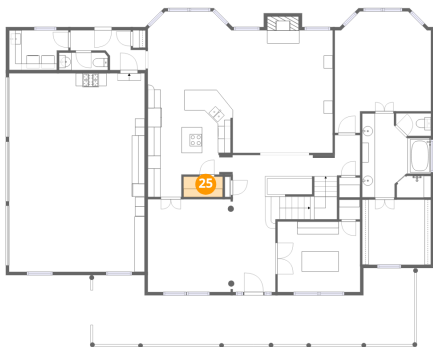
24 Floor 2 - Primary Bath



Dimensions: 10'9" x 13'1"
Area: 118 sq. ft
Counted as living area: Yes

Heated: Yes
Finished: Yes
Enclosed: Yes
Contiguous: Yes
Permitted: Yes
Wet space: Yes
Addition: No
Conversion: No

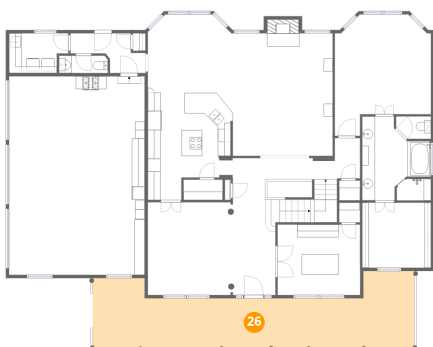
25 Floor 2 - Pantry



Dimensions: 6'1" x 3'2"
Area: 19 sq. ft
Counted as living area: Yes

Heated: Yes
Finished: Yes
Enclosed: Yes
Contiguous: Yes
Permitted: Yes
Wet space: No
Addition: No
Conversion: No

26 Floor 2 - Porch



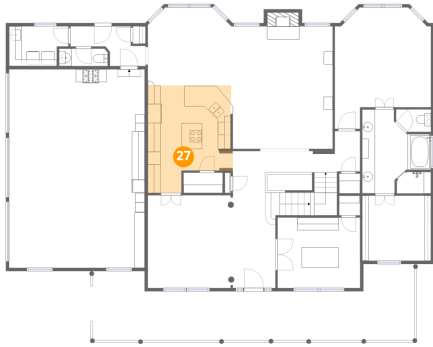
Dimensions: 50'3" x 11'11"
Area: 444 sq. ft
Counted as living area: No

Heated: No
Finished: No
Enclosed: No
Contiguous: Yes
Permitted: Yes
Wet space: No
Addition: No
Conversion: No

Home data report

7020 Debold Road, Sabillasville, Frederick County, Maryland,
United States, 21780

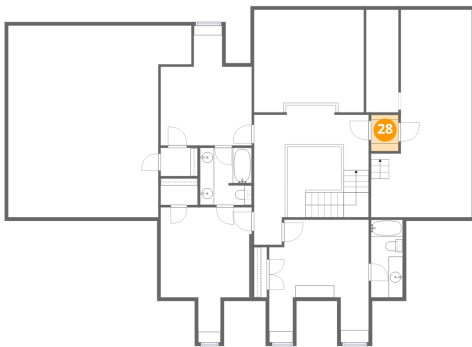
27 Floor 2 - Kitchen



Dimensions: 13'3" x 16'9"
Area: 191 sq. ft
Counted as living area: Yes

Heated: Yes
Finished: Yes
Enclosed: Yes
Contiguous: Yes
Permitted: Yes
Wet space: No
Addition: No
Conversion: No

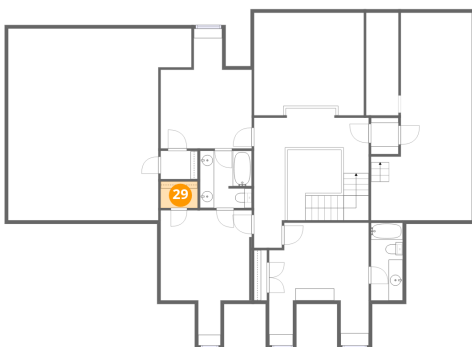
28 Floor 3 - Hall



Dimensions: 3'11" x 5'2"
Area: 20 sq. ft
Counted as living area: Yes

Heated: Yes
Finished: Yes
Enclosed: Yes
Contiguous: Yes
Permitted: Yes
Wet space: No
Addition: No
Conversion: No

29 Floor 3 - W.I.C.

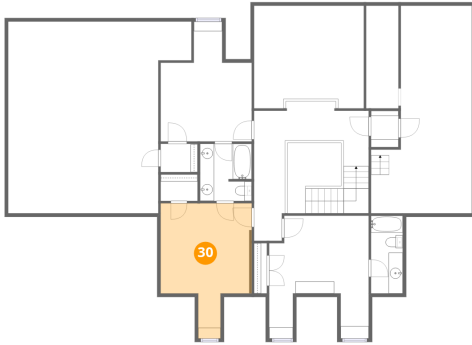


Dimensions: 5'3" x 3'9"
Area: 20 sq. ft
Counted as living area: Yes

Heated: Yes
Finished: Yes
Enclosed: Yes
Contiguous: Yes
Permitted: Yes
Wet space: No
Addition: No
Conversion: No

7020 Debold Road, Sabillasville, Frederick County, Maryland,
United States, 21780

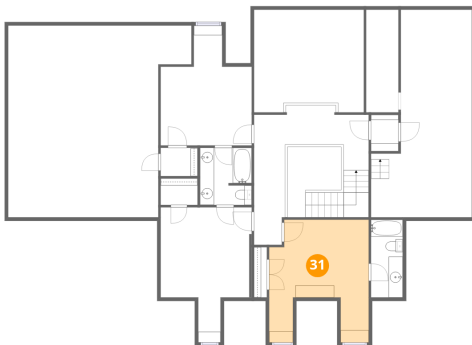
30 Floor 3 - Bedroom



Dimensions: 12'11" x 17'8"
Area: 186 sq. ft
Counted as living area: Yes

Heated: Yes
Finished: Yes
Enclosed: Yes
Contiguous: Yes
Permitted: Yes
Wet space: No
Addition: No
Conversion: No

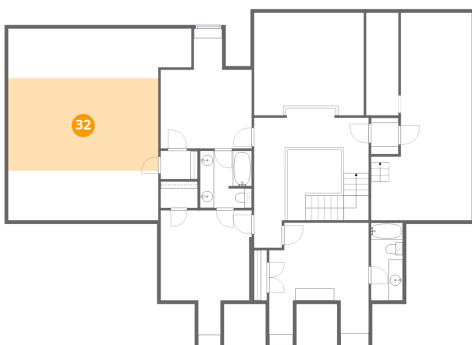
31 Floor 3 - Bedroom



Dimensions: 14'2" x 15'8"
Area: 195 sq. ft
Counted as living area: Yes

Heated: Yes
Finished: Yes
Enclosed: Yes
Contiguous: Yes
Permitted: Yes
Wet space: No
Addition: No
Conversion: No

32 Floor 3 - Attic

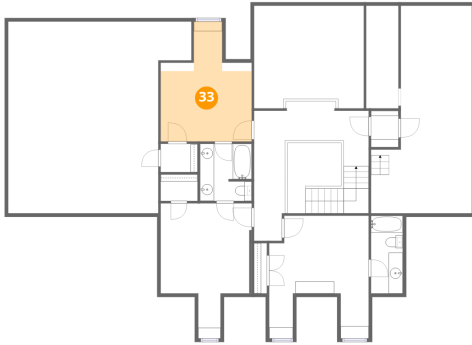


Dimensions: 21'4" x 27'3"
Area: 281 sq. ft
Counted as living area: No

Heated: No
Finished: No
Enclosed: Yes
Contiguous: Yes
Permitted: Yes
Wet space: No
Addition: No
Conversion: No

7020 Debold Road, Sabillasville, Frederick County, Maryland,
United States, 21780

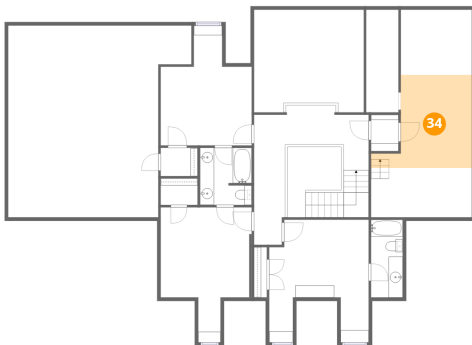
33 Floor 3 - Bedroom



Dimensions: 12'11" x 17'0"
Area: 157 sq. ft
Counted as living area: Yes

Heated: Yes
Finished: Yes
Enclosed: Yes
Contiguous: Yes
Permitted: Yes
Wet space: No
Addition: No
Conversion: No

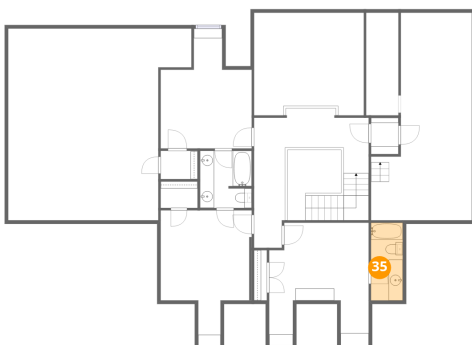
34 Floor 3 - Attic



Dimensions: 14'4" x 29'6"
Area: 142 sq. ft
Counted as living area: No

Heated: No
Finished: No
Enclosed: Yes
Contiguous: Yes
Permitted: Yes
Wet space: No
Addition: No
Conversion: No

35 Floor 3 - Bath

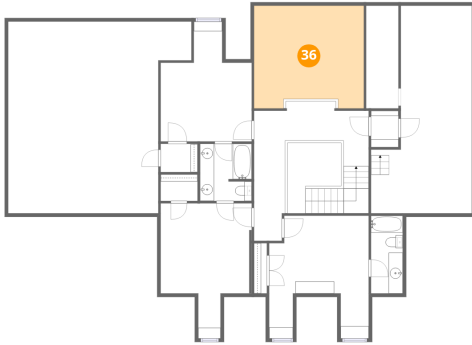


Dimensions: 4'6" x 11'0"
Area: 50 sq. ft
Counted as living area: Yes

Heated: Yes
Finished: Yes
Enclosed: Yes
Contiguous: Yes
Permitted: Yes
Wet space: Yes
Addition: No
Conversion: No

7020 Debold Road, Sabillasville, Frederick County, Maryland,
United States, 21780

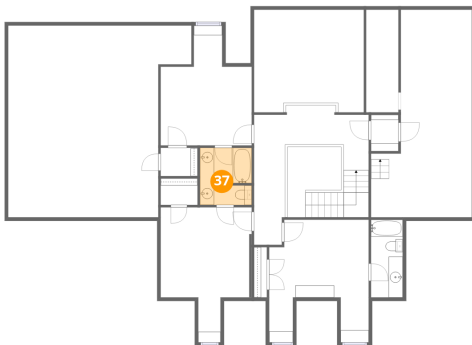
36 Floor 3 - Open To Below



Dimensions: 15'7" x 14'7"
Area: 217 sq. ft
Counted as living area: No

Heated: No
Finished: No
Enclosed: No
Contiguous: Yes
Permitted: No
Wet space: No
Addition: No
Conversion: No

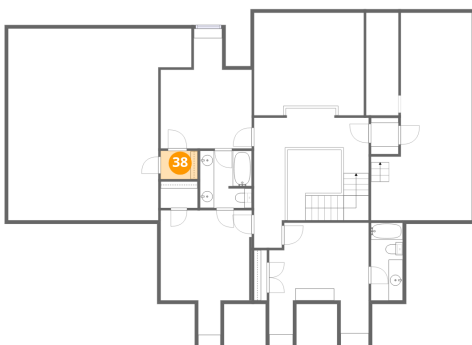
37 Floor 3 - Bath



Dimensions: 7'4" x 8'1"
Area: 59 sq. ft
Counted as living area: Yes

Heated: Yes
Finished: Yes
Enclosed: Yes
Contiguous: Yes
Permitted: Yes
Wet space: Yes
Addition: No
Conversion: No

38 Floor 3 - W.I.C.

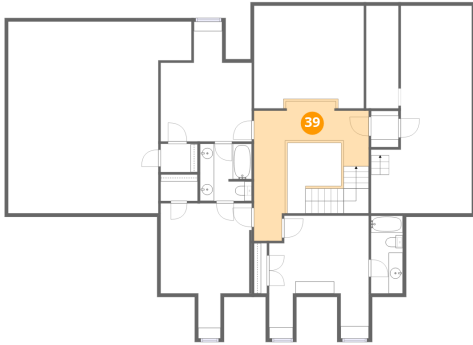


Dimensions: 5'3" x 4'0"
Area: 21 sq. ft
Counted as living area: Yes

Heated: Yes
Finished: Yes
Enclosed: Yes
Contiguous: Yes
Permitted: Yes
Wet space: No
Addition: No
Conversion: No

7020 Debold Road, Sabillasville, Frederick County, Maryland,
United States, 21780

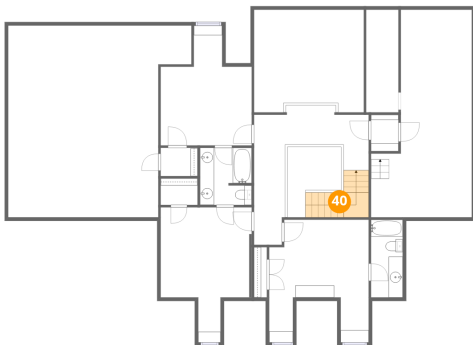
39 Floor 3 - Hall



Dimensions: 16'3" x 18'6"
Area: 165 sq. ft
Counted as living area: Yes

Heated: Yes
Finished: Yes
Enclosed: Yes
Contiguous: Yes
Permitted: Yes
Wet space: No
Addition: No
Conversion: No

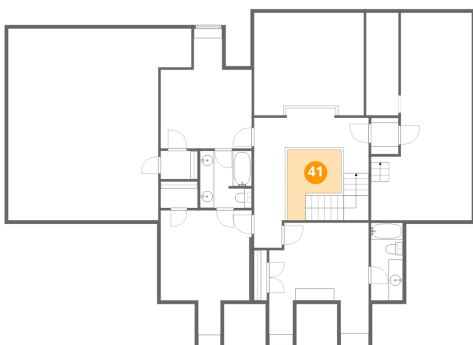
40 Floor 3 - Stairwell



Dimensions: 9'0" x 6'8"
Area: 43 sq. ft
Counted as living area: No

Heated: No
Finished: No
Enclosed: No
Contiguous: Yes
Permitted: No
Wet space: No
Addition: No
Conversion: No

41 Floor 3 - Open To Below



Dimensions: 7'7" x 10'0"
Area: 57 sq. ft
Counted as living area: No

Heated: No
Finished: No
Enclosed: No
Contiguous: Yes
Permitted: No
Wet space: No
Addition: No
Conversion: No