

# 280 Arbors At Bridle Path, Ballwin, MO, US



**Total Area: 3281 sq. ft**

Basement: 49 sq. ft, 1st Floor: 1772 sq. ft, 2nd Floor: 1460 sq. ft

Excluded: Basement 1601 sq. ft, Garage 385 sq. ft, Open to below 437 sq. ft, Walls: 300 sq. ft

## Property summary



Home data report

## 280 Arbors At Bridle Path,Ballwin,MO,US

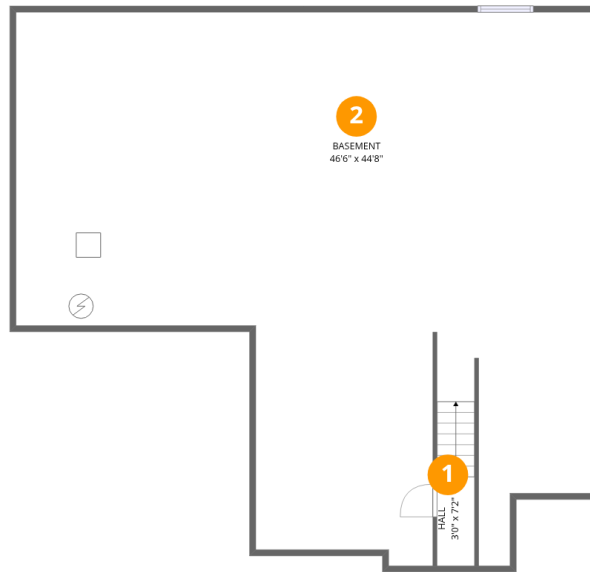


**1**  
Half baths



**1**  
Garages

# 280 Arbors At Bridle Path,Ballwin,MO,US



## Room dimensions

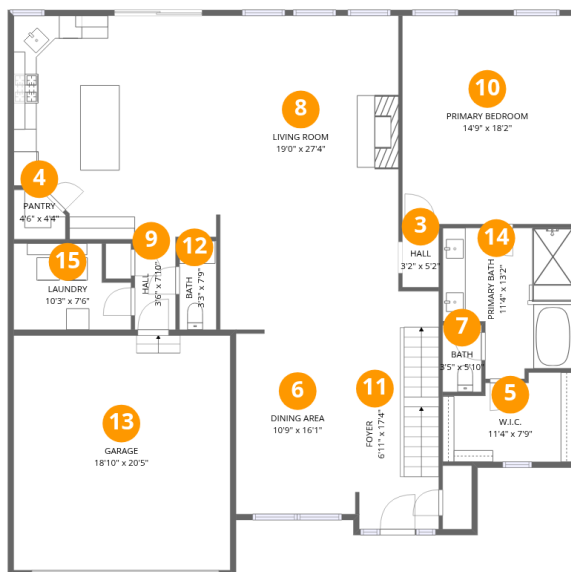
Floor 1 Below grade

Total:49sqft

Excluded: 1601sqft

#		Dimensions	sqft	Counted as living area
1	Hall	3'0" x 7'2"	21 sq. ft	Yes
2	Basement	46'6" x 44'8"	2076 sq. ft	No

# 280 Arbors At Bridle Path, Ballwin, MO, US



## Room dimensions

Floor 2

Total: 1772 sqft

Excluded: 385 sqft

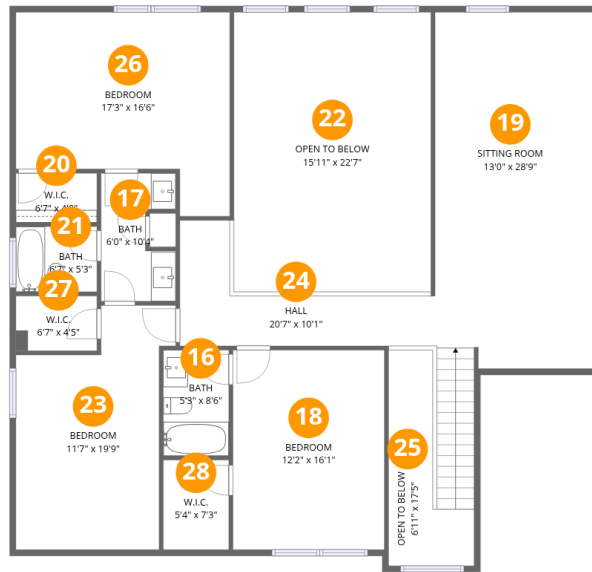
#		Dimensions	sqft	Counted as living area
3	Hall	3'2" x 5'2"	16 sq. ft	Yes
4	Pantry	4'6" x 4'4"	20 sq. ft	Yes
5	W.I.C.	11'4" x 7'9"	88 sq. ft	Yes
6	Dining Area	10'9" x 16'1"	172 sq. ft	Yes
7	Bath	3'5" x 5'10"	20 sq. ft	Yes
8	Living Room	19'0" x 27'4"	520 sq. ft	Yes
9	Hall	3'6" x 7'10"	28 sq. ft	Yes
10	Primary Bedroom	14'9" x 18'2"	268 sq. ft	Yes
11	Foyer	6'11" x 17'4"	120 sq. ft	Yes
12	Bath	3'3" x 7'9"	25 sq. ft	Yes
13	Garage	18'10" x 20'5"	385 sq. ft	No

Home data report

**280 Arbors At Bridle Path,Ballwin,MO,US**

#		Dimensions	sqft	Counted as living area
14	Primary Bath	11'4" x 13'2"	148 sq. ft	Yes
15	Laundry	10'3" x 7'6"	77 sq. ft	Yes

# 280 Arbors At Bridle Path, Ballwin, MO, US



## Room dimensions

Floor 3

Total: 1460sqft

Excluded: 437sqft

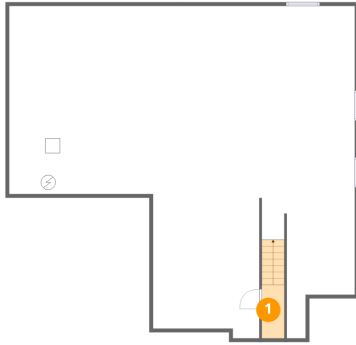
#		Dimensions	sqft	Counted as living area
16	Bath	5'3" x 8'6"	45 sq. ft	Yes
17	Bath	6'0" x 10'4"	62 sq. ft	Yes
18	Bedroom	12'2" x 16'1"	196 sq. ft	Yes
19	Sitting Room	13'0" x 28'9"	373 sq. ft	Yes
20	W.I.C.	6'7" x 4'0"	26 sq. ft	Yes
21	Bath	6'7" x 5'3"	34 sq. ft	Yes
22	Open To Below	15'11" x 22'7"	359 sq. ft	No
23	Bedroom	11'7" x 19'9"	228 sq. ft	Yes
24	Hall	20'7" x 10'1"	208 sq. ft	Yes
25	Open To Below	6'11" x 17'5"	120 sq. ft	No
26	Bedroom	17'3" x 16'6"	284 sq. ft	Yes

Home data report

**280 Arbors At Bridle Path,Ballwin,MO,US**

#		Dimensions	sqft	Counted as living area
27	W.I.C.	6'7" x 4'5"	29 sq. ft	Yes
28	W.I.C.	5'4" x 7'3"	38 sq. ft	Yes

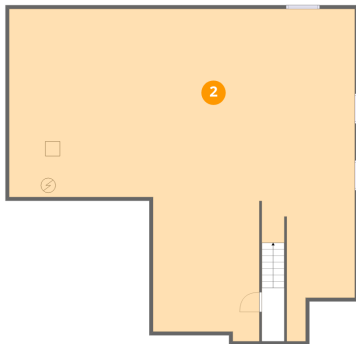
### 1 Floor 1 - Hall



Dimensions: 3'0" x 7'2"  
Area: 21 sq. ft  
Counted as living area: No

Heated: Yes  
Finished: Yes  
Enclosed: Yes  
Contiguous: No  
Permitted: Yes  
Wet space: No  
Addition: No  
Conversion: No

### 2 Floor 1 - Basement



Dimensions: 46'6" x 44'8"  
Area: 2076 sq. ft  
Counted as living area: No

Heated: Yes  
Finished: No  
Enclosed: Yes  
Contiguous: Yes  
Permitted: Yes  
Wet space: No  
Addition: No  
Conversion: No

**3** Floor 2 - Hall



Dimensions: 3'2" x 5'2"  
Area: 16 sq. ft  
Counted as living area: Yes

Heated: Yes  
Finished: Yes  
Enclosed: Yes  
Contiguous: Yes  
Permitted: Yes  
Wet space: No  
Addition: No  
Conversion: No

**4** Floor 2 - Pantry



Dimensions: 4'6" x 4'4"  
Area: 20 sq. ft  
Counted as living area: Yes

Heated: Yes  
Finished: Yes  
Enclosed: Yes  
Contiguous: Yes  
Permitted: Yes  
Wet space: No  
Addition: No  
Conversion: No

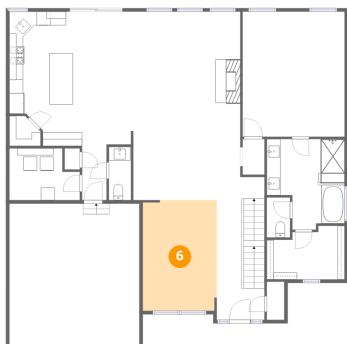
**5** Floor 2 - W.I.C.



Dimensions: 11'4" x 7'9"  
Area: 88 sq. ft  
Counted as living area: Yes

Heated: Yes  
Finished: Yes  
Enclosed: Yes  
Contiguous: Yes  
Permitted: Yes  
Wet space: No  
Addition: No  
Conversion: No

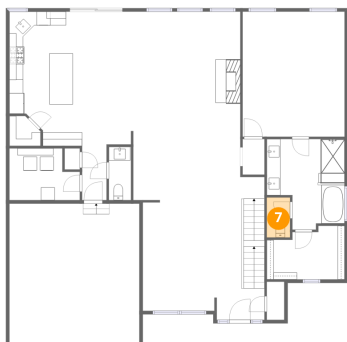
## 6 Floor 2 - Dining Area



Dimensions: 10'9" x 16'1"  
Area: 172 sq. ft  
Counted as living area: Yes

Heated: Yes  
Finished: Yes  
Enclosed: Yes  
Contiguous: Yes  
Permitted: Yes  
Wet space: No  
Addition: No  
Conversion: No

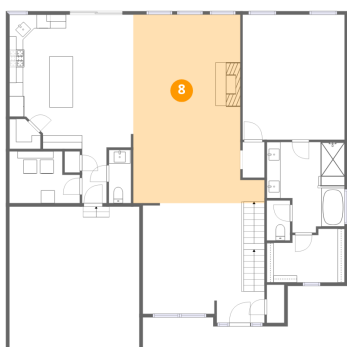
## 7 Floor 2 - Bath



Dimensions: 3'5" x 5'10"  
Area: 20 sq. ft  
Counted as living area: Yes

Heated: Yes  
Finished: Yes  
Enclosed: Yes  
Contiguous: Yes  
Permitted: Yes  
Wet space: Yes  
Addition: No  
Conversion: No

## 8 Floor 2 - Living Room



Dimensions: 19'0" x 27'4"  
Area: 520 sq. ft  
Counted as living area: Yes

Heated: Yes  
Finished: Yes  
Enclosed: Yes  
Contiguous: Yes  
Permitted: Yes  
Wet space: No  
Addition: No  
Conversion: No

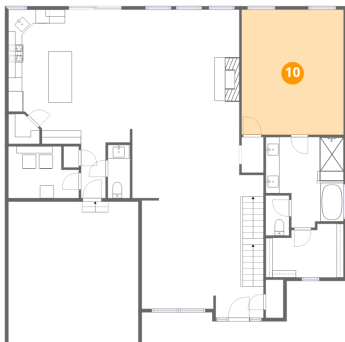
### 9 Floor 2 - Hall



Dimensions: 3'6" x 7'10"  
Area: 28 sq. ft  
Counted as living area: Yes

Heated: Yes  
Finished: Yes  
Enclosed: Yes  
Contiguous: Yes  
Permitted: Yes  
Wet space: No  
Addition: No  
Conversion: No

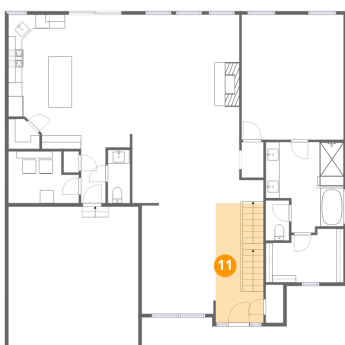
### 10 Floor 2 - Primary Bedroom



Dimensions: 14'9" x 18'2"  
Area: 268 sq. ft  
Counted as living area: Yes

Heated: Yes  
Finished: Yes  
Enclosed: Yes  
Contiguous: Yes  
Permitted: Yes  
Wet space: No  
Addition: No  
Conversion: No

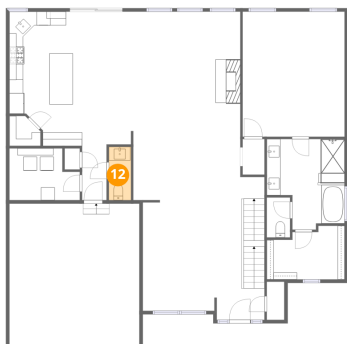
### 11 Floor 2 - Foyer



Dimensions: 6'11" x 17'4"  
Area: 120 sq. ft  
Counted as living area: Yes

Heated: Yes  
Finished: Yes  
Enclosed: Yes  
Contiguous: Yes  
Permitted: Yes  
Wet space: No  
Addition: No  
Conversion: No

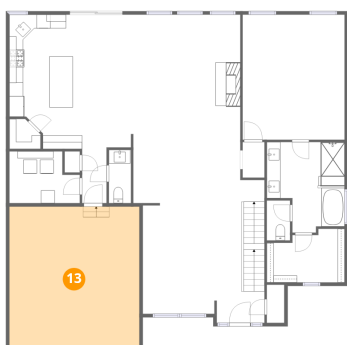
**12** Floor 2 - Bath



Dimensions: 3'3" x 7'9"  
Area: 25 sq. ft  
Counted as living area: Yes

Heated: Yes  
Finished: Yes  
Enclosed: Yes  
Contiguous: Yes  
Permitted: Yes  
Wet space: Yes  
Addition: No  
Conversion: No

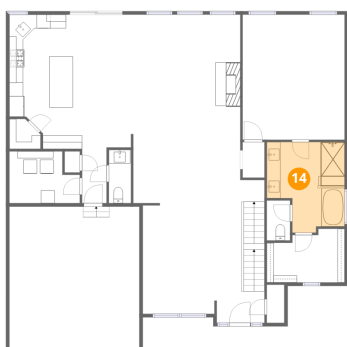
**13** Floor 2 - Garage



Dimensions: 18'10" x 20'5"  
Area: 385 sq. ft  
Counted as living area: No

Heated: No  
Finished: No  
Enclosed: Yes  
Contiguous: Yes  
Permitted: Yes  
Wet space: No  
Addition: No  
Conversion: No

**14** Floor 2 - Primary Bath



Dimensions: 11'4" x 13'2"  
Area: 148 sq. ft  
Counted as living area: Yes

Heated: Yes  
Finished: Yes  
Enclosed: Yes  
Contiguous: Yes  
Permitted: Yes  
Wet space: Yes  
Addition: No  
Conversion: No

**15** Floor 2 - Laundry



Dimensions: 10'3" x 7'6"  
Area: 77 sq. ft  
Counted as living area: Yes

Heated: Yes  
Finished: Yes  
Enclosed: Yes  
Contiguous: Yes  
Permitted: Yes  
Wet space: No  
Addition: No  
Conversion: No

**16** Floor 3 - Bath



Dimensions: 5'3" x 8'6"  
Area: 45 sq. ft  
Counted as living area: Yes

Heated: Yes  
Finished: Yes  
Enclosed: Yes  
Contiguous: Yes  
Permitted: Yes  
Wet space: Yes  
Addition: No  
Conversion: No

**17** Floor 3 - Bath



Dimensions: 6'0" x 10'4"  
Area: 62 sq. ft  
Counted as living area: Yes

Heated: Yes  
Finished: Yes  
Enclosed: Yes  
Contiguous: Yes  
Permitted: Yes  
Wet space: Yes  
Addition: No  
Conversion: No

**18** Floor 3 - Bedroom



Dimensions: 12'2" x 16'1"  
Area: 196 sq. ft  
Counted as living area: Yes

Heated: Yes  
Finished: Yes  
Enclosed: Yes  
Contiguous: Yes  
Permitted: Yes  
Wet space: No  
Addition: No  
Conversion: No

**19** Floor 3 - Sitting Room



Dimensions: 13'0" x 28'9"  
Area: 373 sq. ft  
Counted as living area: Yes

Heated: Yes  
Finished: Yes  
Enclosed: Yes  
Contiguous: Yes  
Permitted: Yes  
Wet space: No  
Addition: No  
Conversion: No

**20** Floor 3 - W.I.C.



Dimensions: 6'7" x 4'0"  
Area: 26 sq. ft  
Counted as living area: Yes

Heated: Yes  
Finished: Yes  
Enclosed: Yes  
Contiguous: Yes  
Permitted: Yes  
Wet space: No  
Addition: No  
Conversion: No

**21** Floor 3 - Bath



Dimensions: 6'7" x 5'3"  
Area: 34 sq. ft  
Counted as living area: Yes

Heated: Yes  
Finished: Yes  
Enclosed: Yes  
Contiguous: Yes  
Permitted: Yes  
Wet space: Yes  
Addition: No  
Conversion: No

**22** Floor 3 - Open To Below



Dimensions: 15'11" x 22'7"  
Area: 359 sq. ft  
Counted as living area: No

Heated: No  
Finished: No  
Enclosed: No  
Contiguous: Yes  
Permitted: No  
Wet space: No  
Addition: No  
Conversion: No

**23** Floor 3 - Bedroom



Dimensions: 11'7" x 19'9"  
Area: 228 sq. ft  
Counted as living area: Yes

Heated: Yes  
Finished: Yes  
Enclosed: Yes  
Contiguous: Yes  
Permitted: Yes  
Wet space: No  
Addition: No  
Conversion: No

**24** Floor 3 - Hall



Dimensions: 20'7" x 10'1"  
Area: 208 sq. ft  
Counted as living area: Yes

Heated: Yes  
Finished: Yes  
Enclosed: Yes  
Contiguous: Yes  
Permitted: Yes  
Wet space: No  
Addition: No  
Conversion: No

**25** Floor 3 - Open To Below



Dimensions: 6'11" x 17'5"  
Area: 120 sq. ft  
Counted as living area: No

Heated: No  
Finished: No  
Enclosed: No  
Contiguous: Yes  
Permitted: No  
Wet space: No  
Addition: No  
Conversion: No

**26** Floor 3 - Bedroom



Dimensions: 17'3" x 16'6"  
Area: 284 sq. ft  
Counted as living area: Yes

Heated: Yes  
Finished: Yes  
Enclosed: Yes  
Contiguous: Yes  
Permitted: Yes  
Wet space: No  
Addition: No  
Conversion: No

## 280 Arbors At Bridle Path,Ballwin,MO,US

### 27 Floor 3 - W.I.C.

---



Dimensions: 6'7" x 4'5"  
Area: 29 sq. ft  
Counted as living area: Yes

Heated: Yes  
Finished: Yes  
Enclosed: Yes  
Contiguous: Yes  
Permitted: Yes  
Wet space: No  
Addition: No  
Conversion: No

### 28 Floor 3 - W.I.C.

---



Dimensions: 5'4" x 7'3"  
Area: 38 sq. ft  
Counted as living area: Yes

Heated: Yes  
Finished: Yes  
Enclosed: Yes  
Contiguous: Yes  
Permitted: Yes  
Wet space: No  
Addition: No  
Conversion: No