

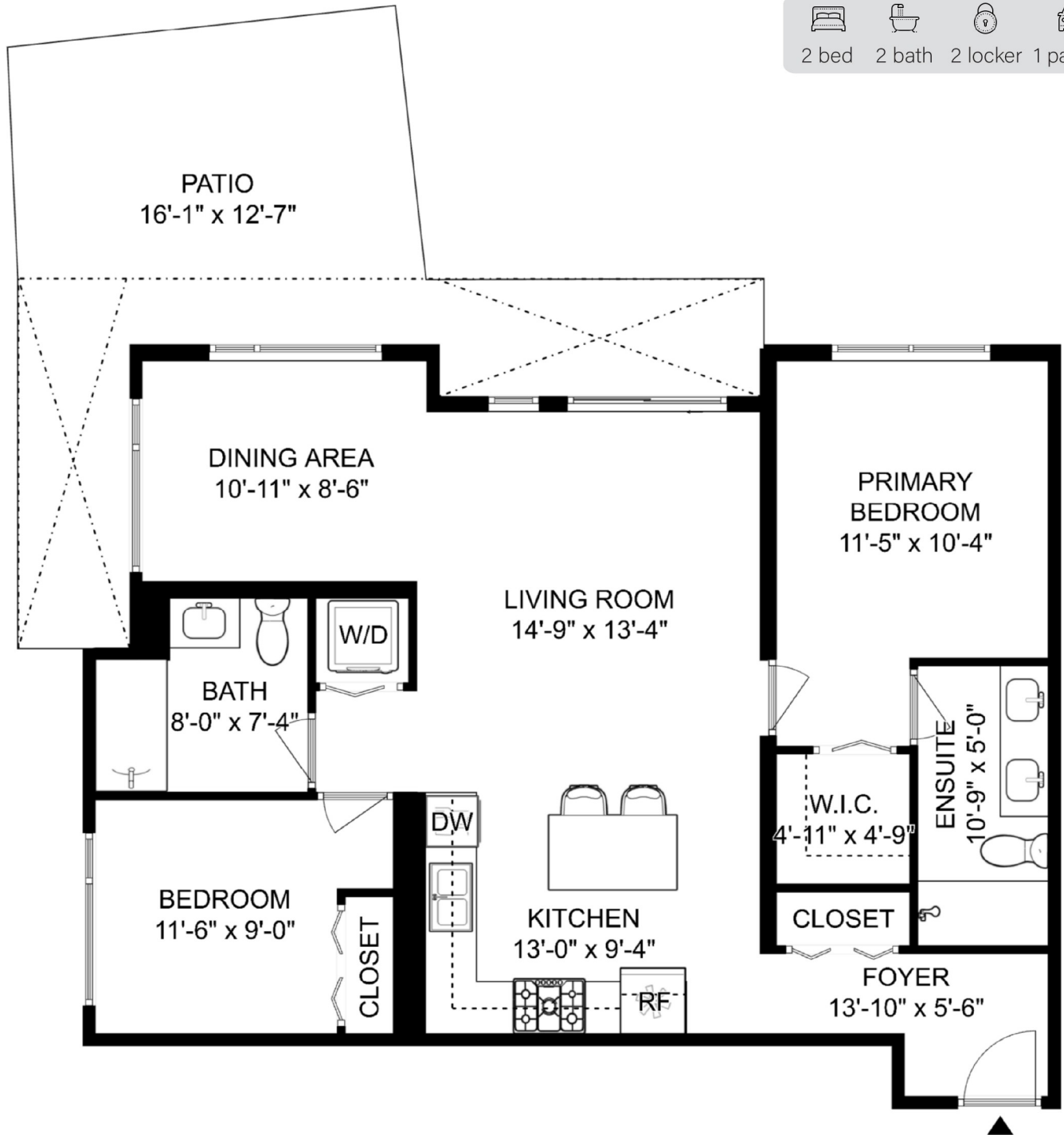
# 320 - 3229 St Johns Street Port Moody

LIVING SPACE		(sq.ft.)
Floor Area		1,005
Patio		335
Combined Total		1,340
Ceiling Height		9'-0"






2 bed 2 bath 2 locker 1 parking



The floor plan is not suitable for architectural/construction and is covered under E&O. All right reserved for Virtualized Studio. User shall not publish and distribute such material and/or incorporate it in other works in any form.



SCALE

