

Home data report

387 Channelview Drive, Moneta, Virginia, United States



Total Area: 3774 sq. ft

Basement: 1710 sq. ft, 1st Floor: 2064 sq. ft

Excluded: Basement 280 sq. ft, Utility 74 sq. ft, Garage 494 sq. ft, Deck 480 sq. ft, Walls: 247 sq. ft

Property summary

2 Floors

3 Bedrooms

3 Bathrooms

1 Garages

387 Channelview Drive, Moneta, Virginia, United States



Room dimensions

Floor 1 Below grade

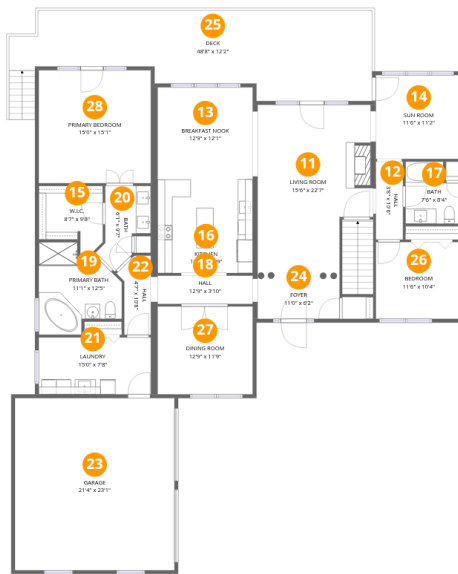
Total: 1710 sqft

Excluded: 354 sqft

#		Dimensions	sqft	Counted as living area
1	Basement	28'8" x 9'9"	280 sq. ft	No
2	Hall	3'8" x 8'4"	30 sq. ft	Yes
3	Kitchen	11'10" x 12'1"	141 sq. ft	Yes
4	Bath	7'6" x 10'9"	79 sq. ft	Yes
5	Family Room	17'5" x 33'4"	503 sq. ft	Yes
6	Recreation Room	29'6" x 28'8"	701 sq. ft	Yes
7	Bedroom	11'6" x 14'1"	163 sq. ft	Yes
8	Utility	5'2" x 4'3"	22 sq. ft	No
9	Utility	11'6" x 9'7"	52 sq. ft	No
10	W.I.C.	7'6" x 4'7"	34 sq. ft	Yes

Home data report

387 Channelview Drive, Moneta, Virginia, United States



Room dimensions

Floor 2

Total: 2064 sqft

Excluded: 974 sqft

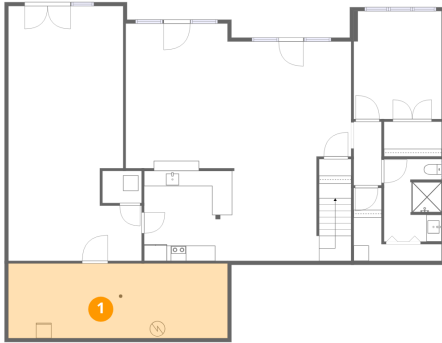
#		Dimensions	sqft	Counted as living area
11	Living Room	15'6" x 22'7"	310 sq. ft	Yes
12	Hall	3'8" x 10'6"	38 sq. ft	Yes
13	Breakfast Nook	12'9" x 12'1"	155 sq. ft	Yes
14	Sun Room	11'6" x 11'2"	129 sq. ft	Yes
15	W.I.C.	8'7" x 9'8"	67 sq. ft	Yes
16	Kitchen	12'9" x 12'9"	163 sq. ft	Yes
17	Bath	7'6" x 8'4"	56 sq. ft	Yes
18	Hall	12'9" x 3'10"	48 sq. ft	Yes
19	Primary Bath	11'1" x 12'5"	109 sq. ft	Yes
20	Bath	6'1" x 9'7"	56 sq. ft	Yes
21	Laundry	15'0" x 7'8"	115 sq. ft	Yes

Home data report

387 Channelview Drive, Moneta, Virginia, United States

#		Dimensions	sqft	Counted as living area
22	Hall	4'7" x 10'8"	38 sq. ft	Yes
23	Garage	21'4" x 23'1"	494 sq. ft	No
24	Foyer	11'0" x 6'2"	67 sq. ft	Yes
25	Deck	48'8" x 12'2"	480 sq. ft	No
26	Bedroom	11'6" x 10'4"	118 sq. ft	Yes
27	Dining Room	12'9" x 11'9"	150 sq. ft	Yes
28	Primary Bedroom	15'0" x 15'1"	228 sq. ft	Yes

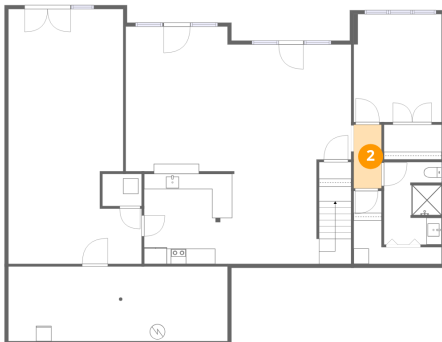
1 Floor 1 - Basement



Dimensions: 28'8" x 9'9"
Area: 280 sq. ft
Counted as living area: No

Heated: Yes
Finished: No
Enclosed: Yes
Contiguous: Yes
Permitted: Yes
Wet space: No
Addition: No
Conversion: No

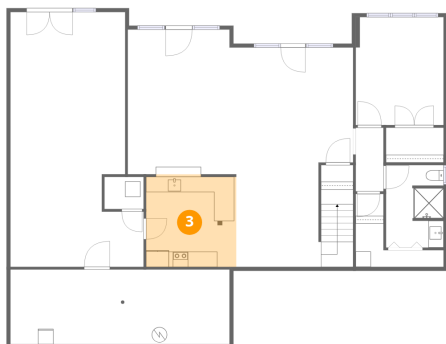
2 Floor 1 - Hall



Dimensions: 3'8" x 8'4"
Area: 30 sq. ft
Counted as living area: Yes

Heated: Yes
Finished: Yes
Enclosed: Yes
Contiguous: Yes
Permitted: Yes
Wet space: No
Addition: No
Conversion: No

3 Floor 1 - Kitchen



Dimensions: 11'10" x 12'1"
Area: 141 sq. ft
Counted as living area: Yes

Heated: Yes
Finished: Yes
Enclosed: Yes
Contiguous: Yes
Permitted: Yes
Wet space: No
Addition: No
Conversion: No

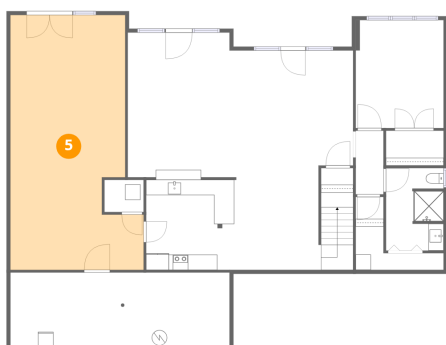
4 Floor 1 - Bath



Dimensions: 7'6" x 10'9"
Area: 79 sq. ft
Counted as living area: Yes

Heated: Yes
Finished: Yes
Enclosed: Yes
Contiguous: Yes
Permitted: Yes
Wet space: Yes
Addition: No
Conversion: No

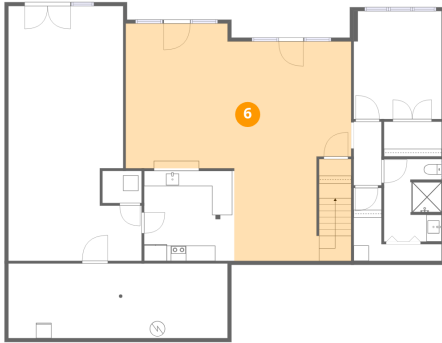
5 Floor 1 - Family Room



Dimensions: 17'5" x 33'4"
Area: 503 sq. ft
Counted as living area: Yes

Heated: Yes
Finished: Yes
Enclosed: Yes
Contiguous: Yes
Permitted: Yes
Wet space: No
Addition: No
Conversion: No

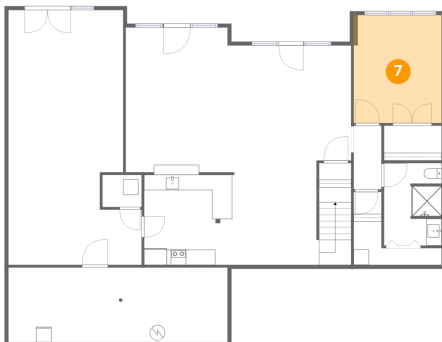
6 Floor 1 - Recreation Room



Dimensions: 29'6" x 28'8"
Area: 701 sq. ft
Counted as living area: Yes

Heated: Yes
Finished: Yes
Enclosed: Yes
Contiguous: Yes
Permitted: Yes
Wet space: No
Addition: No
Conversion: No

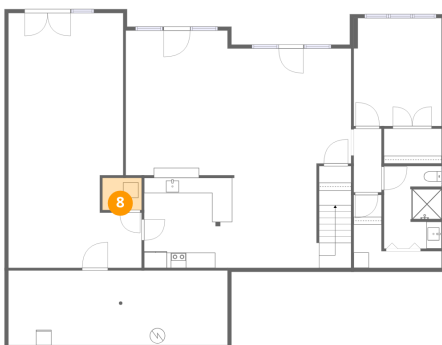
7 Floor 1 - Bedroom



Dimensions: 11'6" x 14'1"
Area: 163 sq. ft
Counted as living area: Yes

Heated: Yes
Finished: Yes
Enclosed: Yes
Contiguous: Yes
Permitted: Yes
Wet space: No
Addition: No
Conversion: No

8 Floor 1 - Utility



Dimensions: 5'2" x 4'3"
Area: 22 sq. ft
Counted as living area: No

Heated: Yes
Finished: No
Enclosed: Yes
Contiguous: Yes
Permitted: Yes
Wet space: No
Addition: No
Conversion: No

9 Floor 1 - Utility



Dimensions: 11'6" x 9'7"
Area: 52 sq. ft
Counted as living area: No

Heated: Yes
Finished: No
Enclosed: Yes
Contiguous: Yes
Permitted: Yes
Wet space: No
Addition: No
Conversion: No

10 Floor 1 - W.I.C.



Dimensions: 7'6" x 4'7"
Area: 34 sq. ft
Counted as living area: Yes

Heated: Yes
Finished: Yes
Enclosed: Yes
Contiguous: Yes
Permitted: Yes
Wet space: No
Addition: No
Conversion: No

11 Floor 2 - Living Room



Dimensions: 15'6" x 22'7"
Area: 310 sq. ft
Counted as living area: Yes

Heated: Yes
Finished: Yes
Enclosed: Yes
Contiguous: Yes
Permitted: Yes
Wet space: No
Addition: No
Conversion: No

12 Floor 2 - Hall



Dimensions: 3'8" x 10'6"
Area: 38 sq. ft
Counted as living area: Yes

Heated: Yes
Finished: Yes
Enclosed: Yes
Contiguous: Yes
Permitted: Yes
Wet space: No
Addition: No
Conversion: No

13 Floor 2 - Breakfast Nook



Dimensions: 12'9" x 12'1"
Area: 155 sq. ft
Counted as living area: Yes

Heated: Yes
Finished: Yes
Enclosed: Yes
Contiguous: Yes
Permitted: Yes
Wet space: No
Addition: No
Conversion: No

14 Floor 2 - Sun Room



Dimensions: 11'6" x 11'2"
Area: 129 sq. ft
Counted as living area: Yes

Heated: Yes
Finished: Yes
Enclosed: Yes
Contiguous: Yes
Permitted: Yes
Wet space: No
Addition: No
Conversion: No

15 Floor 2 - W.I.C.



Dimensions: 8'7" x 9'8"
Area: 67 sq. ft
Counted as living area: Yes

Heated: Yes
Finished: Yes
Enclosed: Yes
Contiguous: Yes
Permitted: Yes
Wet space: No
Addition: No
Conversion: No

16 Floor 2 - Kitchen



Dimensions: 12'9" x 12'9"
Area: 163 sq. ft
Counted as living area: Yes

Heated: Yes
Finished: Yes
Enclosed: Yes
Contiguous: Yes
Permitted: Yes
Wet space: No
Addition: No
Conversion: No

17 Floor 2 - Bath



Dimensions: 7'6" x 8'4"
Area: 56 sq. ft
Counted as living area: Yes

Heated: Yes
Finished: Yes
Enclosed: Yes
Contiguous: Yes
Permitted: Yes
Wet space: Yes
Addition: No
Conversion: No

18 Floor 2 - Hall



Dimensions: 12'9" x 3'10"
Area: 48 sq. ft
Counted as living area: Yes

Heated: Yes
Finished: Yes
Enclosed: Yes
Contiguous: Yes
Permitted: Yes
Wet space: No
Addition: No
Conversion: No

19 Floor 2 - Primary Bath



Dimensions: 11'1" x 12'5"
Area: 109 sq. ft
Counted as living area: Yes

Heated: Yes
Finished: Yes
Enclosed: Yes
Contiguous: Yes
Permitted: Yes
Wet space: Yes
Addition: No
Conversion: No

20 Floor 2 - Bath



Dimensions: 6'1" x 9'7"
Area: 56 sq. ft
Counted as living area: Yes

Heated: Yes
Finished: Yes
Enclosed: Yes
Contiguous: Yes
Permitted: Yes
Wet space: Yes
Addition: No
Conversion: No

21 Floor 2 - Laundry



Dimensions: 15'0" x 7'8"
Area: 115 sq. ft
Counted as living area: Yes

Heated: Yes
Finished: Yes
Enclosed: Yes
Contiguous: Yes
Permitted: Yes
Wet space: No
Addition: No
Conversion: No

22 Floor 2 - Hall



Dimensions: 4'7" x 10'8"
Area: 38 sq. ft
Counted as living area: Yes

Heated: Yes
Finished: Yes
Enclosed: Yes
Contiguous: Yes
Permitted: Yes
Wet space: No
Addition: No
Conversion: No

23 Floor 2 - Garage



Dimensions: 21'4" x 23'1"
Area: 494 sq. ft
Counted as living area: No

Heated: No
Finished: No
Enclosed: Yes
Contiguous: Yes
Permitted: Yes
Wet space: No
Addition: No
Conversion: No

24 Floor 2 - Foyer



Dimensions: 11'0" x 6'2"
Area: 67 sq. ft
Counted as living area: Yes

Heated: Yes
Finished: Yes
Enclosed: Yes
Contiguous: Yes
Permitted: Yes
Wet space: No
Addition: No
Conversion: No

25 Floor 2 - Deck



Dimensions: 48'8" x 12'2"
Area: 480 sq. ft
Counted as living area: No

Heated: No
Finished: No
Enclosed: No
Contiguous: Yes
Permitted: Yes
Wet space: No
Addition: No
Conversion: No

26 Floor 2 - Bedroom



Dimensions: 11'6" x 10'4"
Area: 118 sq. ft
Counted as living area: Yes

Heated: Yes
Finished: Yes
Enclosed: Yes
Contiguous: Yes
Permitted: Yes
Wet space: No
Addition: No
Conversion: No

27 Floor 2 - Dining Room



Dimensions: 12'9" x 11'9"
Area: 150 sq. ft
Counted as living area: Yes

Heated: Yes
Finished: Yes
Enclosed: Yes
Contiguous: Yes
Permitted: Yes
Wet space: No
Addition: No
Conversion: No

28 Floor 2 - Primary Bedroom



Dimensions: 15'0" x 15'1"
Area: 228 sq. ft
Counted as living area: Yes

Heated: Yes
Finished: Yes
Enclosed: Yes
Contiguous: Yes
Permitted: Yes
Wet space: No
Addition: No
Conversion: No