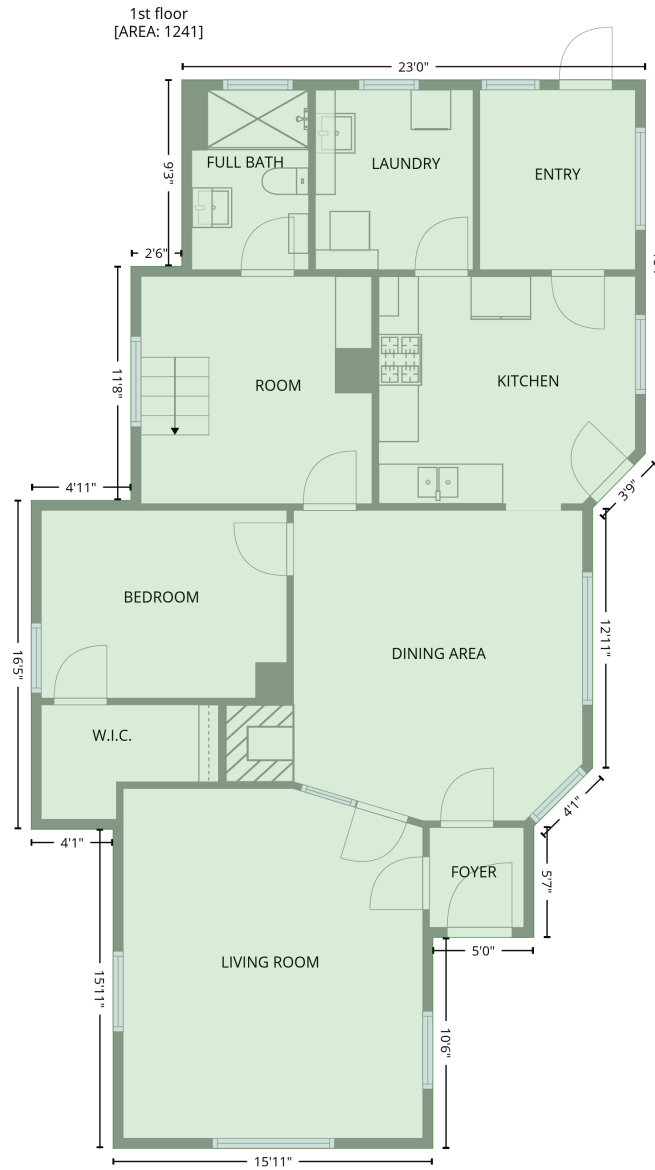


108 5th St, St Joseph, IL, US

Gross Living Area: 1778 sq. ft

Level 1



Space	Area (sq. ft)	Calculation
1st floor (Living area)	1241	Coordinate Polygon Area Algorithm using inches $-((375.2 + 375.2) * (70.8 - 294) + (375.2 + 343.7) * (294 - 326.4) + (343.7 + 343.7) * (326.4 - 481.9) + (343.7 + 308.7) * (481.9 - 516.5) + (308.7 + 308.7) * (516.5 - 583.1) + (308.7 + 248.4) * (583.1 - 583.1) + (248.4 + 248.4) * (583.1 - 709.1) + (248.4 + 57.8) * (709.1 - 709.1) + (57.8 + 57.8) * (709.1 - 518.5) + (57.8 + 9) * (518.5 - 518.5) + (9 + 9) * (518.5 - 322) + (9 + 68.4) * (322 - 322) + (68.4 + 68.4) * (322 - 182.2) + (68.4 + 98.7) * (182.2 - 182.2) + (98.7 + 98.7) * (182.2 - 70.8) + (98.7 + 375.2) * (70.8 - 70.8)) * 0.5 * 0.00694$

108 5th St, St Joseph, IL, US

Gross Living Area: 1778 sq. ft

Level 2

Space	Area (sq. ft)	Calculation <small>Coordinate Polygon Area Algorithm using inches</small>
2nd floor (Living area)	537	$-\left((326.5 + 326.5) * (229 - 323.9) + (326.5 + 326.5) * (323.9 - 324) + (326.5 + 326.5) * (324 - 328) + (326.5 + 239.4) * (328 - 328) + (239.4 + 239.4) * (328 - 358) + (239.4 + 337.6) * (358 - 358) + (337.6 + 337.7) * (358 - 468.4) + (337.7 + 239.4) * (468.4 - 468.4) + (239.4 + 239.4) * (468.4 - 471.9) + (239.4 + 235.4) * (471.9 - 471.9) + (235.4 + 235.4) * (471.9 - 468.4) + (235.4 + 202) * (468.4 - 468.4) + (202 + 202) * (468.4 - 512.5) + (202 + 198) * (512.5 - 512.5) + (198 + 198) * (512.5 - 709.1) + (198 + 105.2) * (709.1 - 709.1) + (105.2 + 105.2) * (709.1 - 512.5) + (105.2 + 120.8) * (512.5 - 512.5) + (120.8 + 120.8) * (512.5 - 469.6) + (120.8 + 9) * (469.6 - 469.6) + (9 + 9) * (469.6 - 357.8) + (9 + 198) * (357.8 - 357.8) + (198 + 198) * (357.8 - 328) + (198 + 114.9) * (328 - 328) + (114.9 + 108.9) * (328 - 322) + (108.9 + 108.9) * (322 - 276.9) + (108.9 + 200.3) * (276.9 - 276.9) + (200.3 + 200.3) * (276.9 - 229) + (200.3 + 326.5) * (229 - 229)\right) * 0.5 * 0.00694 + -\left((343.7 + 343.7) * (358 - 468.4) + (343.7 + 337.7) * (468.4 - 468.4) + (337.7 + 337.7) * (468.4 - 358) + (337.7 + 343.7) * (358 - 358)\right) * 0.5 * 0.00694$
LOW CEILING (Non-living area)	65	$-\left((63.8 + 63.8) * (512.5 - 512.5) + (63.8 + 105.2) * (512.5 - 512.5) + (105.2 + 105.2) * (512.5 - 709.1) + (105.2 + 57.8) * (709.1 - 709.1) + (57.8 + 57.8) * (709.1 - 518.5) + (57.8 + 63.8) * (518.5 - 512.5)\right) * 0.5 * 0.00694$
LOW CEILING (Non-living area)	69	$-\left((242.4 + 248.4) * (512.5 - 518.5) + (248.4 + 248.4) * (518.5 - 709.1) + (248.4 + 198) * (709.1 - 709.1) + (198 + 198) * (709.1 - 512.5) + (198 + 242.4) * (512.5 - 512.5) + (242.4 + 242.4) * (512.5 - 512.5)\right) * 0.5 * 0.00694$
LOW CEILING (Non-living area)	35	$-\left((120.8 + 120.8) * (469.6 - 512.5) + (120.8 + 63.8) * (512.5 - 512.5) + (63.8 + 57.8) * (512.5 - 518.5) + (57.8 + 9) * (518.5 - 518.5) + (9 + 9) * (518.5 - 469.6) + (9 + 120.8) * (469.6 - 469.6)\right) * 0.5 * 0.00694$
LOW CEILING (Non-living area)	47	$-\left((235.4 + 235.4) * (468.4 - 471.9) + (235.4 + 239.4) * (471.9 - 471.9) + (239.4 + 239.4) * (471.9 - 468.4) + (239.4 + 343.7) * (468.4 - 468.4) + (343.7 + 343.7) * (468.4 - 518.5) + (343.7 + 248.4) * (518.5 - 518.5) + (248.4 + 242.5) * (518.5 - 512.5) + (242.5 + 202) * (512.5 - 512.5) + (202 + 202) * (512.5 - 468.4) + (202 + 235.4) * (468.4 - 468.4)\right) * 0.5 * 0.00694$
LOW CEILING (Non-living area)	22	$-\left((337.7 + 343.7) * (328 - 329.9) + (343.7 + 343.7) * (329.9 - 358) + (343.7 + 239.4) * (358 - 358) + (239.4 + 239.4) * (358 - 328) + (239.4 + 337.7) * (328 - 328)\right) * 0.5 * 0.00694$
LOW CEILING (Non-living area)	37	$-\left((108.9 + 114.9) * (322 - 328) + (114.9 + 165.4) * (328 - 328) + (165.4 + 165.4) * (328 - 357.8) + (165.4 + 9) * (357.8 - 357.8) + (9 + 9) * (357.8 - 322) + (9 + 108.9) * (322 - 322)\right) * 0.5 * 0.00694$
LOW CEILING (Non-living area)	7	$-\left((198 + 198) * (328 - 357.8) + (198 + 165.4) * (357.8 - 357.8) + (165.4 + 165.4) * (357.8 - 328) + (165.4 + 198) * (328 - 328)\right) * 0.5 * 0.00694$
LOW CEILING (Non-living area)	91	$-\left((375.2 + 375.2) * (182.2 - 329.9) + (375.2 + 343.7) * (329.9 - 329.9) + (343.7 + 337.7) * (329.9 - 328) + (337.7 + 326.5) * (328 - 328) + (326.5 + 326.5) * (328 - 324) + (326.5 + 337.7) * (324 - 324) + (337.7 + 337.7) * (324 - 323.9) + (337.7 + 326.5) * (323.9 - 323.9) + (326.5 + 326.5) * (323.9 - 229) + (326.5 + 200.3) * (229 - 229) + (200.3 + 200.3) * (229 - 182.2) + (200.3 + 375.2) * (182.2 - 182.2)\right) * 0.5 * 0.00694$