

Home report

35 Warbler's Way, Berkeley Springs, Morgan County, West Virginia, United States, 25411




Total Area: 2246 sq. ft

Below Ground: 1123 sq. ft, Floor 2: 1123 sq. ft

Excluded: Porch 702 sq. ft, Walls: 136 sq. ft

Property summary

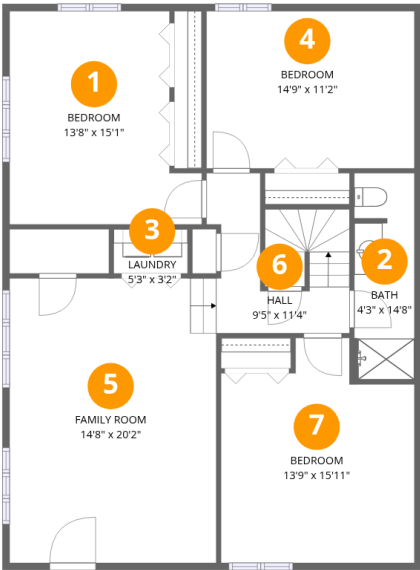
 2 Floors

 5 Bedrooms

 3 Bathrooms

Home report

35 Warbler's Way, Berkeley Springs, Morgan County, West Virginia, United States, 25411



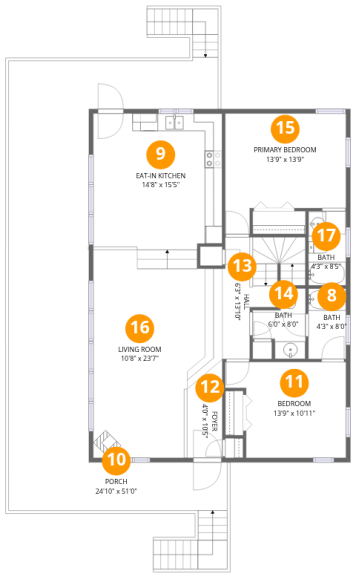
Room dimensions

Floor 1 Below ground Total:1123sqft Excluded: 0sqft

#		Max Dimensions	sqft	Included
1	Bedroom	13'8" x 15'1"	180 sq. ft	Yes
2	Bath	4'3" x 14'8"	62 sq. ft	Yes
3	Laundry	5'3" x 3'2"	16 sq. ft	Yes
4	Bedroom	14'9" x 11'2"	164 sq. ft	Yes
5	Family Room	14'8" x 20'2"	296 sq. ft	Yes
6	Hall	9'5" x 11'4"	89 sq. ft	Yes
7	Bedroom	13'9" x 15'11"	190 sq. ft	Yes

Home report

35 Warbler's Way, Berkeley Springs, Morgan County, West Virginia, United States, 25411



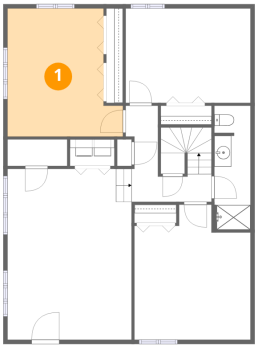
Room dimensions

Floor 2 Total:1123sqft Excluded: 702sqft

#		Max Dimensions	sqft	Included
8	Bath	4'3" x 8'0"	34 sq. ft	Yes
9	Eat-in Kitchen	14'8" x 15'5"	225 sq. ft	Yes
10	Porch	24'10" x 51'0"	703 sq. ft	No
11	Bedroom	13'9" x 10'11"	131 sq. ft	Yes
12	Foyer	4'0" x 10'5"	38 sq. ft	Yes
13	Hall	6'3" x 13'10"	83 sq. ft	Yes
14	Bath	6'0" x 8'0"	35 sq. ft	Yes
15	Primary Bedroom	13'9" x 13'9"	156 sq. ft	Yes
16	Living Room	10'8" x 23'7"	303 sq. ft	Yes
17	Bath	4'3" x 8'5"	36 sq. ft	Yes

35 Warbler's Way, Berkeley Springs, Morgan County, West Virginia, United States, 25411

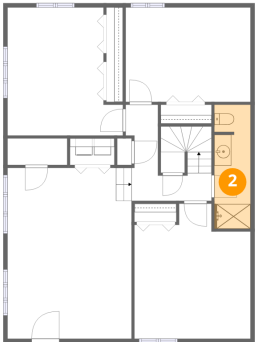
1 Floor 1 - Bedroom



Max Dimensions: 13'8" x 15'1"
Calculated Area: 180 sq. ft
Included: Yes

Heated: Yes
Finished: Yes
Enclosed: Yes
Contiguous: Yes
Permitted: Yes
Wet space: No
Addition: No
Conversion: No

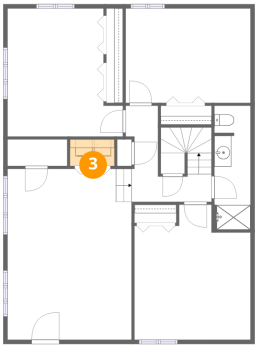
2 Floor 1 - Bath



Max Dimensions: 4'3" x 14'8"
Calculated Area: 62 sq. ft
Included: Yes

Heated: Yes
Finished: Yes
Enclosed: Yes
Contiguous: Yes
Permitted: Yes
Wet space: Yes
Addition: No
Conversion: No

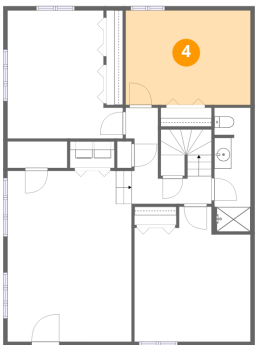
3 Floor 1 - Laundry



Max Dimensions: 5'3" x 3'2"
Calculated Area: 16 sq. ft
Included: Yes

Heated: Yes
Finished: Yes
Enclosed: Yes
Contiguous: Yes
Permitted: Yes
Wet space: No
Addition: No
Conversion: No

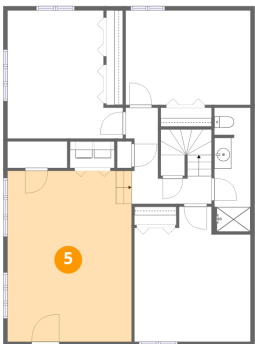
4 Floor 1 - Bedroom



Max Dimensions: 14'9" x 11'2"
Calculated Area: 164 sq. ft
Included: Yes

Heated: Yes
Finished: Yes
Enclosed: Yes
Contiguous: Yes
Permitted: Yes
Wet space: No
Addition: No
Conversion: No

5 Floor 1 - Family Room

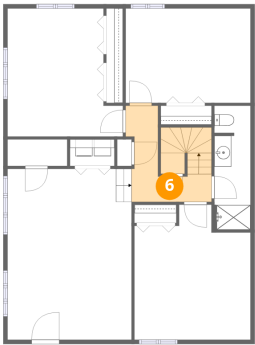


Max Dimensions: 14'8" x 20'2"
Calculated Area: 296 sq. ft
Included: Yes

Heated: Yes
Finished: Yes
Enclosed: Yes
Contiguous: Yes
Permitted: Yes
Wet space: No
Addition: No
Conversion: No

35 Warbler's Way, Berkeley Springs, Morgan County, West Virginia, United States, 25411

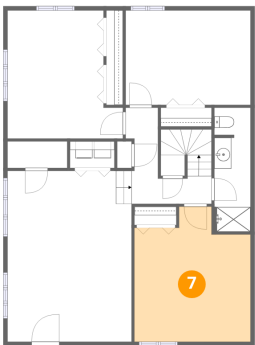
6 Floor 1 - Hall



Max Dimensions: 9'5" x 11'4"
Calculated Area: 89 sq. ft
Included: Yes

Heated: Yes
Finished: Yes
Enclosed: Yes
Contiguous: Yes
Permitted: Yes
Wet space: No
Addition: No
Conversion: No

7 Floor 1 - Bedroom



Max Dimensions: 13'9" x 15'11"
Calculated Area: 190 sq. ft
Included: Yes

Heated: Yes
Finished: Yes
Enclosed: Yes
Contiguous: Yes
Permitted: Yes
Wet space: No
Addition: No
Conversion: No

8 Floor 2 - Bath



Max Dimensions: 4'3" x 8'0"
Calculated Area: 34 sq. ft
Included: Yes

Heated: Yes
Finished: Yes
Enclosed: Yes
Contiguous: Yes
Permitted: Yes
Wet space: Yes
Addition: No
Conversion: No

9 Floor 2 - Eat-in Kitchen



Max Dimensions: 14'8" x 15'5"
Calculated Area: 225 sq. ft
Included: Yes

Heated: Yes
Finished: Yes
Enclosed: Yes
Contiguous: Yes
Permitted: Yes
Wet space: No
Addition: No
Conversion: No

10 Floor 2 - Porch



Max Dimensions: 24'10" x 51'0"
Calculated Area: 703 sq. ft
Included: No

Heated: No
Finished: No
Enclosed: No
Contiguous: Yes
Permitted: Yes
Wet space: No
Addition: No
Conversion: No

11 Floor 2 - Bedroom



Max Dimensions: 13'9" x 10'11"
Calculated Area: 131 sq. ft
Included: Yes

Heated: Yes
Finished: Yes
Enclosed: Yes
Contiguous: Yes
Permitted: Yes
Wet space: No
Addition: No
Conversion: No

35 Warbler's Way, Berkeley Springs, Morgan County, West Virginia, United States, 25411

12 Floor 2 - Foyer



Max Dimensions: 4'0" x 10'5"
Calculated Area: 38 sq. ft
Included: Yes

Heated: Yes
Finished: Yes
Enclosed: Yes
Contiguous: Yes
Permitted: Yes
Wet space: No
Addition: No
Conversion: No

13 Floor 2 - Hall



Max Dimensions: 6'3" x 13'10"
Calculated Area: 83 sq. ft
Included: Yes

Heated: Yes
Finished: Yes
Enclosed: Yes
Contiguous: Yes
Permitted: Yes
Wet space: No
Addition: No
Conversion: No

14 Floor 2 - Bath



Max Dimensions: 6'0" x 8'0"
Calculated Area: 35 sq. ft
Included: Yes

Heated: Yes
Finished: Yes
Enclosed: Yes
Contiguous: Yes
Permitted: Yes
Wet space: Yes
Addition: No
Conversion: No

35 Warbler's Way, Berkeley Springs, Morgan County, West Virginia, United States, 25411

15 Floor 2 - Primary Bedroom



Max Dimensions: 13'9" x 13'9"
Calculated Area: 156 sq. ft
Included: Yes

Heated: Yes
Finished: Yes
Enclosed: Yes
Contiguous: Yes
Permitted: Yes
Wet space: No
Addition: No
Conversion: No

16 Floor 2 - Living Room



Max Dimensions: 10'8" x 23'7"
Calculated Area: 303 sq. ft
Included: Yes

Heated: Yes
Finished: Yes
Enclosed: Yes
Contiguous: Yes
Permitted: Yes
Wet space: No
Addition: No
Conversion: No

17 Floor 2 - Bath



Max Dimensions: 4'3" x 8'5"
Calculated Area: 36 sq. ft
Included: Yes

Heated: Yes
Finished: Yes
Enclosed: Yes
Contiguous: Yes
Permitted: Yes
Wet space: Yes
Addition: No
Conversion: No