



Home data report

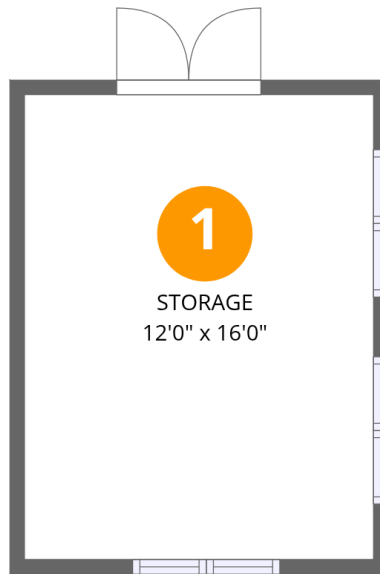
**17821 Carlow Rd,Cornelius,NC,US**

 **1**  
Half baths

 **1**  
Garages

Home data report

17821 Carlow Rd,Cornelius,NC,US



## Room dimensions

Floor 1 Below grade

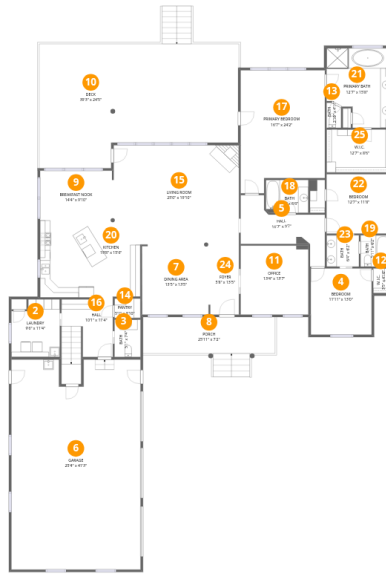
Total:0sqft

Excluded: 221sqft

#		Dimensions	sqft	Counted as living area
1	Storage	12'0" x 16'0"	192 sq. ft	No

# Home data report

## 17821 Carlow Rd, Cornelius, NC, US



### Room dimensions

Floor 2 Below grade

Total: 3136 sqft

Excluded: 2091 sqft

#		Dimensions	sqft	Counted as living area
2	Laundry	9'6" x 11'4"	108 sq. ft	Yes
3	Bath	5'1" x 7'4"	37 sq. ft	Yes
4	Bedroom	11'11" x 13'0"	155 sq. ft	Yes
5	Hall	16'7" x 9'7"	158 sq. ft	Yes
6	Garage	25'4" x 41'3"	1046 sq. ft	No
7	Dining Area	13'5" x 13'5"	180 sq. ft	Yes
8	Porch	25'11" x 7'2"	185 sq. ft	No
9	Breakfast Nook	14'4" x 9'10"	141 sq. ft	Yes
10	Deck	39'3" x 24'5"	958 sq. ft	No
11	Office	13'4" x 13'7"	180 sq. ft	Yes
12	W.I.C.	3'5" x 4'10"	17 sq. ft	Yes

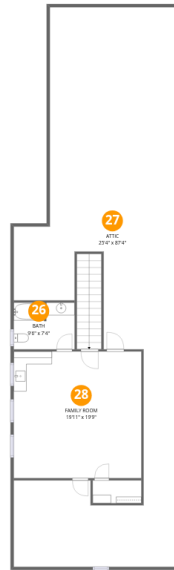
Home data report

17821 Carlow Rd,Cornelius,NC,US

#		Dimensions	sqft	Counted as living area
13	Bath	2'10" x 4'11"	14 sq. ft	Yes
14	Pantry	5'1" x 3'10"	20 sq. ft	Yes
15	Living Room	25'0" x 19'10"	496 sq. ft	Yes
16	Hall	10'1" x 11'4"	114 sq. ft	Yes
17	Primary Bedroom	16'7" x 24'2"	401 sq. ft	Yes
18	Bath	8'4" x 6'6"	54 sq. ft	Yes
19	Bath	5'11" x 6'2"	36 sq. ft	Yes
20	Kitchen	19'8" x 15'6"	305 sq. ft	Yes
21	Primary Bath	12'7" x 15'8"	197 sq. ft	Yes
22	Bedroom	12'7" x 11'8"	147 sq. ft	Yes
23	Bath	6'4" x 6'2"	39 sq. ft	Yes
24	Foyer	5'8" x 13'5"	76 sq. ft	Yes
25	W.I.C.	12'7" x 8'6"	107 sq. ft	Yes

Home data report

17821 Carlow Rd,Cornelius,NC,US



## Room dimensions

Floor 3 Below grade

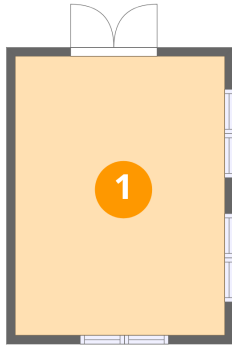
Total:603sqft

Excluded: 1535sqft

#		Dimensions	sqft	Counted as living area
26	Bath	9'6" x 7'4"	69 sq. ft	Yes
27	Attic	25'4" x 87'4"	2214 sq. ft	No
28	Family Room	19'11" x 19'9"	394 sq. ft	Yes

## 1 Floor 1 - Storage

---

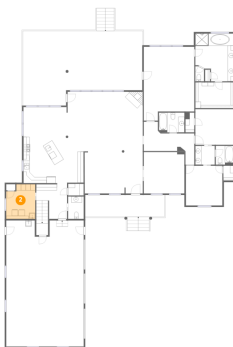


Dimensions: 12'0" x 16'0"  
Area: 192 sq. ft  
Counted as living area: No

Heated: No  
Finished: No  
Enclosed: No  
Contiguous: No  
Permitted: No  
Wet space: No  
Addition: No  
Conversion: No

## 2 Floor 2 - Laundry

---



Dimensions: 9'6" x 11'4"  
Area: 108 sq. ft  
Counted as living area: Yes

Heated: Yes  
Finished: Yes  
Enclosed: Yes  
Contiguous: Yes  
Permitted: Yes  
Wet space: No  
Addition: No  
Conversion: No

### 3 Floor 2 - Bath



Dimensions: 5'1" x 7'4"  
Area: 37 sq. ft  
Counted as living area: Yes

Heated: Yes  
Finished: Yes  
Enclosed: Yes  
Contiguous: Yes  
Permitted: Yes  
Wet space: Yes  
Addition: No  
Conversion: No

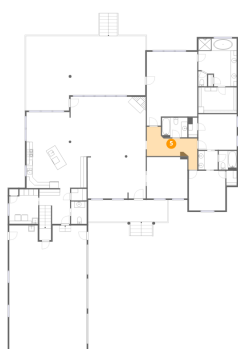
### 4 Floor 2 - Bedroom



Dimensions: 11'11" x 13'0"  
Area: 155 sq. ft  
Counted as living area: Yes

Heated: Yes  
Finished: Yes  
Enclosed: Yes  
Contiguous: Yes  
Permitted: Yes  
Wet space: No  
Addition: No  
Conversion: No

### 5 Floor 2 - Hall



Dimensions: 16'7" x 9'7"  
Area: 158 sq. ft  
Counted as living area: Yes

Heated: Yes  
Finished: Yes  
Enclosed: Yes  
Contiguous: Yes  
Permitted: Yes  
Wet space: No  
Addition: No  
Conversion: No

## 6 Floor 2 - Garage



Dimensions: 25'4" x 41'3"  
Area: 1046 sq. ft  
Counted as living area: No

Heated: No  
Finished: No  
Enclosed: Yes  
Contiguous: Yes  
Permitted: Yes  
Wet space: No  
Addition: No  
Conversion: No

## 7 Floor 2 - Dining Area



Dimensions: 13'5" x 13'5"  
Area: 180 sq. ft  
Counted as living area: Yes

Heated: Yes  
Finished: Yes  
Enclosed: Yes  
Contiguous: Yes  
Permitted: Yes  
Wet space: No  
Addition: No  
Conversion: No

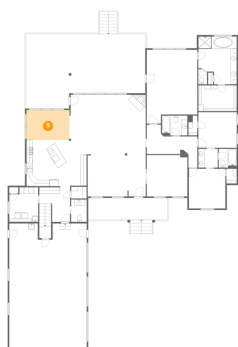
## 8 Floor 2 - Porch



Dimensions: 25'11" x 7'2"  
Area: 185 sq. ft  
Counted as living area: No

Heated: No  
Finished: No  
Enclosed: No  
Contiguous: Yes  
Permitted: Yes  
Wet space: No  
Addition: No  
Conversion: No

## 9 Floor 2 - Breakfast Nook



Dimensions: 14'4" x 9'10"  
Area: 141 sq. ft  
Counted as living area: Yes

Heated: Yes  
Finished: Yes  
Enclosed: Yes  
Contiguous: Yes  
Permitted: Yes  
Wet space: No  
Addition: No  
Conversion: No

## 10 Floor 2 - Deck



Dimensions: 39'3" x 24'5"  
Area: 958 sq. ft  
Counted as living area: No

Heated: No  
Finished: No  
Enclosed: No  
Contiguous: Yes  
Permitted: Yes  
Wet space: No  
Addition: No  
Conversion: No

## 11 Floor 2 - Office



Dimensions: 13'4" x 13'7"  
Area: 180 sq. ft  
Counted as living area: Yes

Heated: Yes  
Finished: Yes  
Enclosed: Yes  
Contiguous: Yes  
Permitted: Yes  
Wet space: No  
Addition: No  
Conversion: No

**12** Floor 2 - W.I.C.

---



Dimensions: 3'5" x 4'10"  
Area: 17 sq. ft  
Counted as living area: Yes

Heated: Yes  
Finished: Yes  
Enclosed: Yes  
Contiguous: Yes  
Permitted: Yes  
Wet space: No  
Addition: No  
Conversion: No

**13** Floor 2 - Bath

---



Dimensions: 2'10" x 4'11"  
Area: 14 sq. ft  
Counted as living area: Yes

Heated: Yes  
Finished: Yes  
Enclosed: Yes  
Contiguous: Yes  
Permitted: Yes  
Wet space: No  
Addition: No  
Conversion: No

**14** Floor 2 - Pantry

---

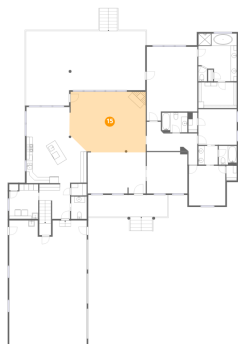


Dimensions: 5'1" x 3'10"  
Area: 20 sq. ft  
Counted as living area: Yes

Heated: Yes  
Finished: Yes  
Enclosed: Yes  
Contiguous: Yes  
Permitted: Yes  
Wet space: No  
Addition: No  
Conversion: No

## 15 Floor 2 - Living Room

---

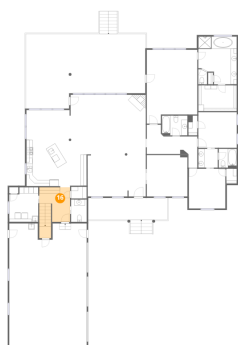


Dimensions: 25'0" x 19'10"  
Area: 496 sq. ft  
Counted as living area: Yes

Heated: Yes  
Finished: Yes  
Enclosed: Yes  
Contiguous: Yes  
Permitted: Yes  
Wet space: No  
Addition: No  
Conversion: No

## 16 Floor 2 - Hall

---

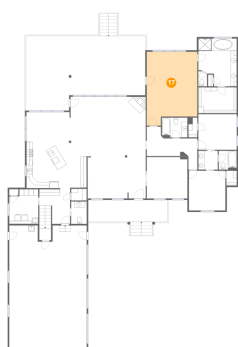


Dimensions: 10'1" x 11'4"  
Area: 114 sq. ft  
Counted as living area: Yes

Heated: Yes  
Finished: Yes  
Enclosed: Yes  
Contiguous: Yes  
Permitted: Yes  
Wet space: No  
Addition: No  
Conversion: No

## 17 Floor 2 - Primary Bedroom

---



Dimensions: 16'7" x 24'2"  
Area: 401 sq. ft  
Counted as living area: Yes

Heated: Yes  
Finished: Yes  
Enclosed: Yes  
Contiguous: Yes  
Permitted: Yes  
Wet space: No  
Addition: No  
Conversion: No

**18** Floor 2 - Bath

---



Dimensions: 8'4" x 6'6"  
Area: 54 sq. ft  
Counted as living area: Yes

Heated: Yes  
Finished: Yes  
Enclosed: Yes  
Contiguous: Yes  
Permitted: Yes  
Wet space: Yes  
Addition: No  
Conversion: No

**19** Floor 2 - Bath

---

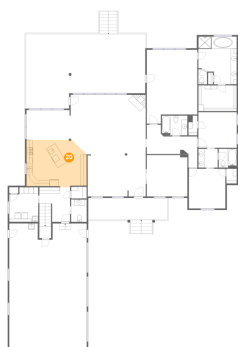


Dimensions: 5'11" x 6'2"  
Area: 36 sq. ft  
Counted as living area: Yes

Heated: Yes  
Finished: Yes  
Enclosed: Yes  
Contiguous: Yes  
Permitted: Yes  
Wet space: Yes  
Addition: No  
Conversion: No

**20** Floor 2 - Kitchen

---



Dimensions: 19'8" x 15'6"  
Area: 305 sq. ft  
Counted as living area: Yes

Heated: Yes  
Finished: Yes  
Enclosed: Yes  
Contiguous: Yes  
Permitted: Yes  
Wet space: No  
Addition: No  
Conversion: No

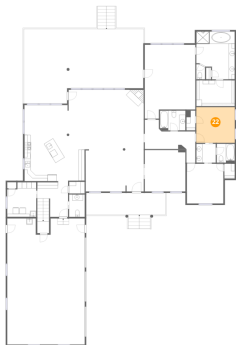
## 21 Floor 2 - Primary Bath



Dimensions: 12'7" x 15'8"  
Area: 197 sq. ft  
Counted as living area: Yes

Heated: Yes  
Finished: Yes  
Enclosed: Yes  
Contiguous: Yes  
Permitted: Yes  
Wet space: Yes  
Addition: No  
Conversion: No

## 22 Floor 2 - Bedroom



Dimensions: 12'7" x 11'8"  
Area: 147 sq. ft  
Counted as living area: Yes

Heated: Yes  
Finished: Yes  
Enclosed: Yes  
Contiguous: Yes  
Permitted: Yes  
Wet space: No  
Addition: No  
Conversion: No

## 23 Floor 2 - Bath



Dimensions: 6'4" x 6'2"  
Area: 39 sq. ft  
Counted as living area: Yes

Heated: Yes  
Finished: Yes  
Enclosed: Yes  
Contiguous: Yes  
Permitted: Yes  
Wet space: Yes  
Addition: No  
Conversion: No

**24** Floor 2 - Foyer

---

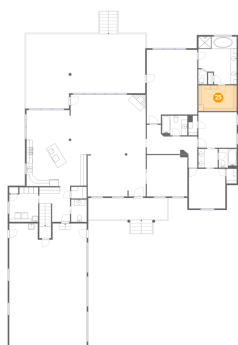


Dimensions: 5'8" x 13'5"  
Area: 76 sq. ft  
Counted as living area: Yes

Heated: Yes  
Finished: Yes  
Enclosed: Yes  
Contiguous: Yes  
Permitted: Yes  
Wet space: No  
Addition: No  
Conversion: No

**25** Floor 2 - W.I.C.

---

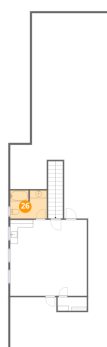


Dimensions: 12'7" x 8'6"  
Area: 107 sq. ft  
Counted as living area: Yes

Heated: Yes  
Finished: Yes  
Enclosed: Yes  
Contiguous: Yes  
Permitted: Yes  
Wet space: No  
Addition: No  
Conversion: No

**26** Floor 3 - Bath

---



Dimensions: 9'6" x 7'4"  
Area: 69 sq. ft  
Counted as living area: Yes

Heated: Yes  
Finished: Yes  
Enclosed: Yes  
Contiguous: Yes  
Permitted: Yes  
Wet space: Yes  
Addition: No  
Conversion: No

**27** Floor 3 - Attic

---



Dimensions: 25'4" x 87'4"  
Area: 2214 sq. ft  
Counted as living area: No

Heated: No  
Finished: No  
Enclosed: Yes  
Contiguous: Yes  
Permitted: Yes  
Wet space: No  
Addition: No  
Conversion: No

**28** Floor 3 - Family Room

---



Dimensions: 19'11" x 19'9"  
Area: 394 sq. ft  
Counted as living area: Yes

Heated: Yes  
Finished: Yes  
Enclosed: Yes  
Contiguous: Yes  
Permitted: Yes  
Wet space: No  
Addition: No  
Conversion: No