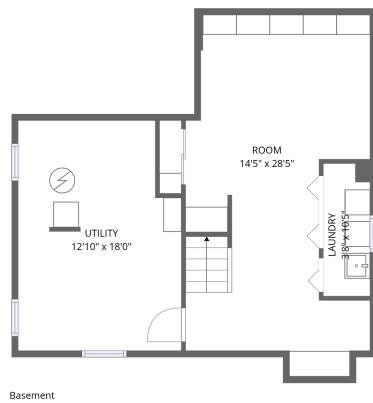
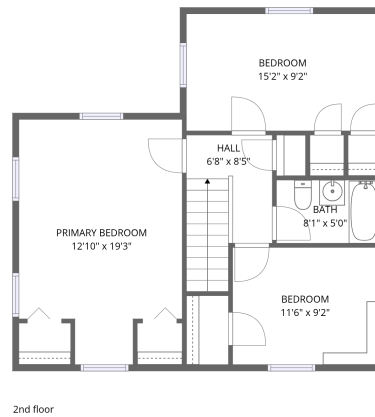
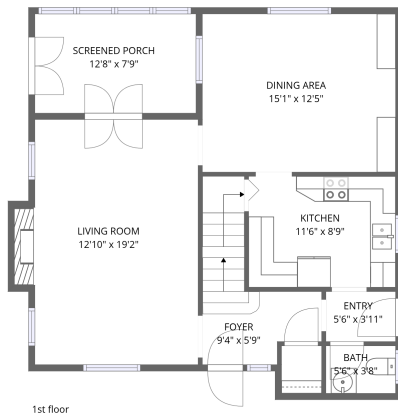


## Home data report

916 N Stone Ave, La Grange Park, IL, US

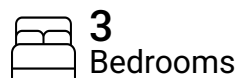


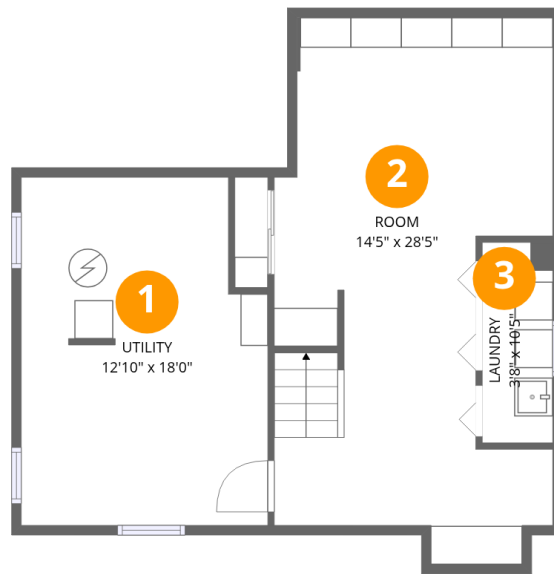
**Total Area: 1987 sq. ft**

Basement: 620 sq. ft, 1st Floor: 695 sq. ft, 2nd Floor: 672 sq. ft

Excluded: Screened porch 99 sq. ft, Fireplace 12 sq. ft, Walls: 179 sq. ft

## Property summary





## Room dimensions

Floor 1 Below grade

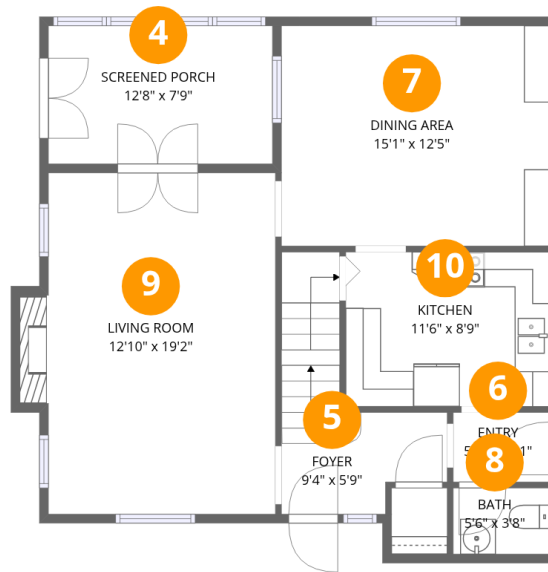
Total:620sqft

Excluded: 0sqft

#		Dimensions	sqft	Counted as living area
1	Utility	12'10" x 18'0"	220 sq. ft	Yes
2	Room	14'5" x 28'5"	335 sq. ft	Yes
3	Laundry	3'8" x 10'5"	38 sq. ft	Yes

# Home data report

## 916 N Stone Ave, La Grange Park, IL, US



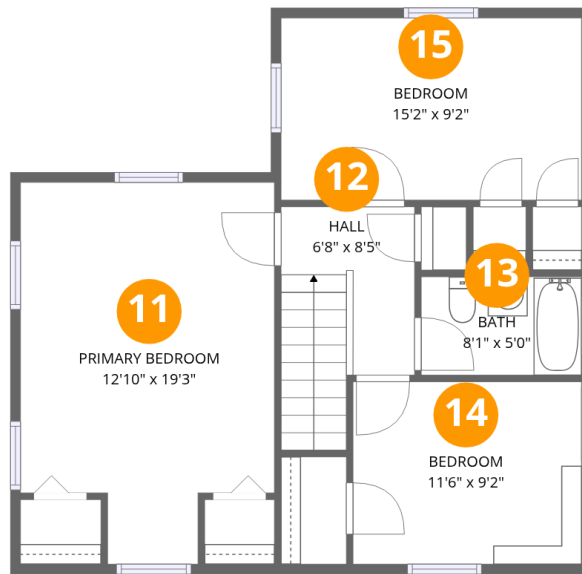
### Room dimensions

Floor 2

Total:695sqft

Excluded: 111sqft

#		Dimensions	sqft	Counted as living area
4	Screened Porch	12'8" x 7'9"	99 sq. ft	No
5	Foyer	9'4" x 5'9"	77 sq. ft	Yes
6	Entry	5'6" x 3'11"	22 sq. ft	Yes
7	Dining Area	15'1" x 12'5"	189 sq. ft	Yes
8	Bath	5'6" x 3'8"	20 sq. ft	Yes
9	Living Room	12'10" x 19'2"	257 sq. ft	Yes
10	Kitchen	11'6" x 8'9"	101 sq. ft	Yes



## Room dimensions

Floor 3

Total:672sqft

Excluded: 0sqft

#		Dimensions	sqft	Counted as living area
11	Primary Bedroom	12'10" x 19'3"	217 sq. ft	Yes
12	Hall	6'8" x 8'5"	70 sq. ft	Yes
13	Bath	8'1" x 5'0"	40 sq. ft	Yes
14	Bedroom	11'6" x 9'2"	106 sq. ft	Yes
15	Bedroom	15'2" x 9'2"	140 sq. ft	Yes

## 1 Floor 1 - Utility



Dimensions: 12'10" x 18'0"  
Area: 220 sq. ft  
Counted as living area: Yes

Heated: Yes  
Finished: Yes  
Enclosed: Yes  
Contiguous: Yes  
Permitted: Yes  
Wet space: No  
Addition: No  
Conversion: No

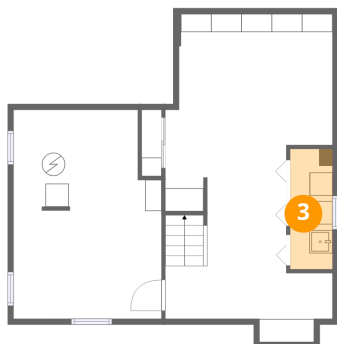
## 2 Floor 1 - Room



Dimensions: 14'5" x 28'5"  
Area: 335 sq. ft  
Counted as living area: Yes

Heated: Yes  
Finished: Yes  
Enclosed: Yes  
Contiguous: Yes  
Permitted: Yes  
Wet space: No  
Addition: No  
Conversion: No

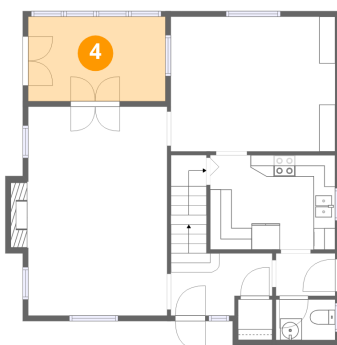
### 3 Floor 1 - Laundry



Dimensions: 3'8" x 10'5"  
Area: 38 sq. ft  
Counted as living area: Yes

Heated: Yes  
Finished: Yes  
Enclosed: Yes  
Contiguous: Yes  
Permitted: Yes  
Wet space: No  
Addition: No  
Conversion: No

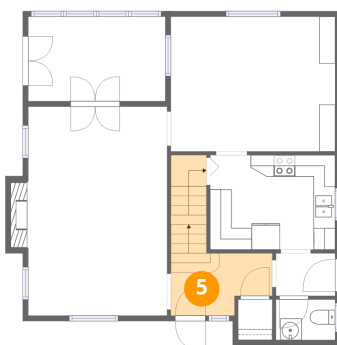
### 4 Floor 2 - Screened Porch



Dimensions: 12'8" x 7'9"  
Area: 99 sq. ft  
Counted as living area: No

Heated: No  
Finished: No  
Enclosed: No  
Contiguous: Yes  
Permitted: Yes  
Wet space: No  
Addition: No  
Conversion: No

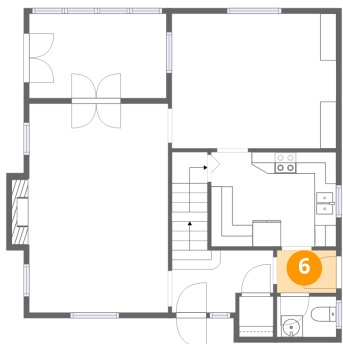
### 5 Floor 2 - Foyer



Dimensions: 9'4" x 5'9"  
Area: 77 sq. ft  
Counted as living area: Yes

Heated: Yes  
Finished: Yes  
Enclosed: Yes  
Contiguous: Yes  
Permitted: Yes  
Wet space: No  
Addition: No  
Conversion: No

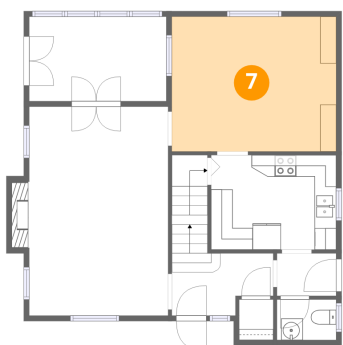
## 6 Floor 2 - Entry



Dimensions: 5'6" x 3'11"  
Area: 22 sq. ft  
Counted as living area: Yes

Heated: Yes  
Finished: Yes  
Enclosed: Yes  
Contiguous: Yes  
Permitted: Yes  
Wet space: No  
Addition: No  
Conversion: No

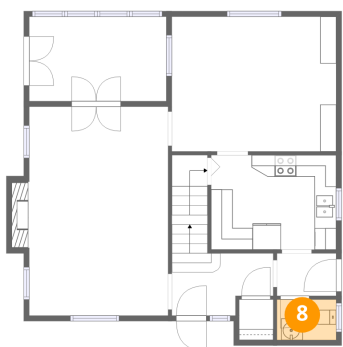
## 7 Floor 2 - Dining Area



Dimensions: 15'1" x 12'5"  
Area: 189 sq. ft  
Counted as living area: Yes

Heated: Yes  
Finished: Yes  
Enclosed: Yes  
Contiguous: Yes  
Permitted: Yes  
Wet space: No  
Addition: No  
Conversion: No

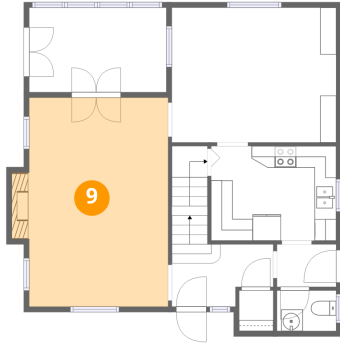
## 8 Floor 2 - Bath



Dimensions: 5'6" x 3'8"  
Area: 20 sq. ft  
Counted as living area: Yes

Heated: Yes  
Finished: Yes  
Enclosed: Yes  
Contiguous: Yes  
Permitted: Yes  
Wet space: Yes  
Addition: No  
Conversion: No

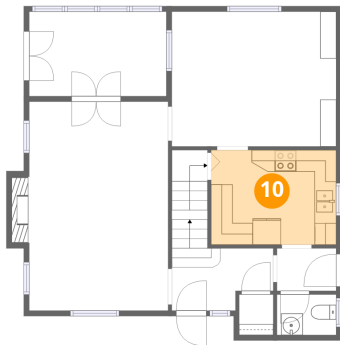
## 9 Floor 2 - Living Room



Dimensions: 12'10" x 19'2"  
Area: 257 sq. ft  
Counted as living area: Yes

Heated: Yes  
Finished: Yes  
Enclosed: Yes  
Contiguous: Yes  
Permitted: Yes  
Wet space: No  
Addition: No  
Conversion: No

## 10 Floor 2 - Kitchen



Dimensions: 11'6" x 8'9"  
Area: 101 sq. ft  
Counted as living area: Yes

Heated: Yes  
Finished: Yes  
Enclosed: Yes  
Contiguous: Yes  
Permitted: Yes  
Wet space: No  
Addition: No  
Conversion: No

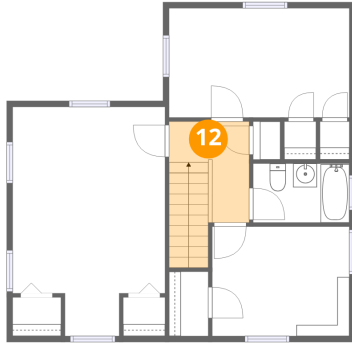
## 11 Floor 3 - Primary Bedroom



Dimensions: 12'10" x 19'3"  
Area: 217 sq. ft  
Counted as living area: Yes

Heated: Yes  
Finished: Yes  
Enclosed: Yes  
Contiguous: Yes  
Permitted: Yes  
Wet space: No  
Addition: No  
Conversion: No

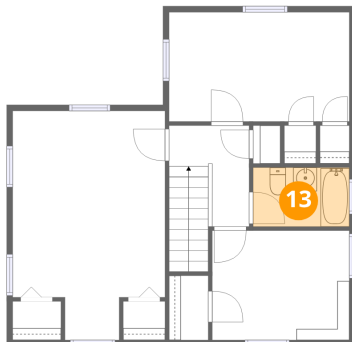
### 12 Floor 3 - Hall



Dimensions: 6'8" x 8'5"  
Area: 70 sq. ft  
Counted as living area: Yes

Heated: Yes  
Finished: Yes  
Enclosed: Yes  
Contiguous: Yes  
Permitted: Yes  
Wet space: No  
Addition: No  
Conversion: No

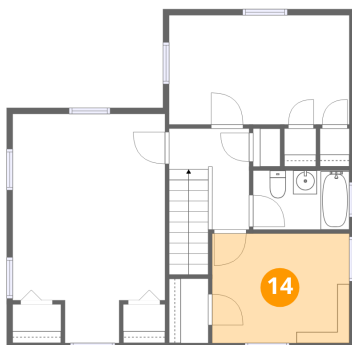
### 13 Floor 3 - Bath



Dimensions: 8'1" x 5'0"  
Area: 40 sq. ft  
Counted as living area: Yes

Heated: Yes  
Finished: Yes  
Enclosed: Yes  
Contiguous: Yes  
Permitted: Yes  
Wet space: Yes  
Addition: No  
Conversion: No

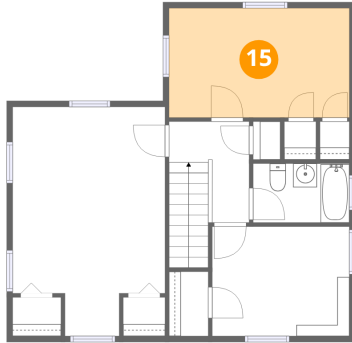
### 14 Floor 3 - Bedroom



Dimensions: 11'6" x 9'2"  
Area: 106 sq. ft  
Counted as living area: Yes

Heated: Yes  
Finished: Yes  
Enclosed: Yes  
Contiguous: Yes  
Permitted: Yes  
Wet space: No  
Addition: No  
Conversion: No

**15** Floor 3 - Bedroom



Dimensions: 15'2" x 9'2"  
Area: 140 sq. ft  
Counted as living area: Yes

Heated: Yes  
Finished: Yes  
Enclosed: Yes  
Contiguous: Yes  
Permitted: Yes  
Wet space: No  
Addition: No  
Conversion: No