

Home data report

962 West Areba Avenue, Hershey, Dauphin County,
Pennsylvania, United States, 17033



Total Area: 2210 sq. ft

Basement 1: 989 sq. ft, 1st Floor: 1221 sq. ft

Excluded: Utility 235 sq. ft, Fireplace 15 sq. ft, Garage 515 sq. ft, Screened porch 114 sq. ft, Porch 79 sq. ft, Walls: 194 sq. ft

Property summary

 **2**
Floors

 **3**
Bedrooms

 **1**
Bathrooms

Home data report

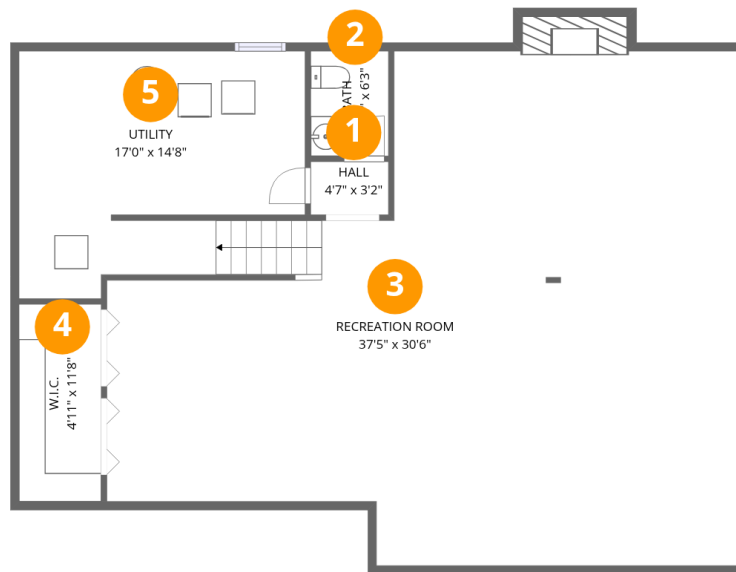
**962 West Areba Avenue, Hershey, Dauphin County,
Pennsylvania, United States, 17033**

 **2**
Half baths

 **1**
Garages

Home data report

962 West Areba Avenue, Hershey, Dauphin County,
Pennsylvania, United States, 17033



Room dimensions

Floor 1 Below grade

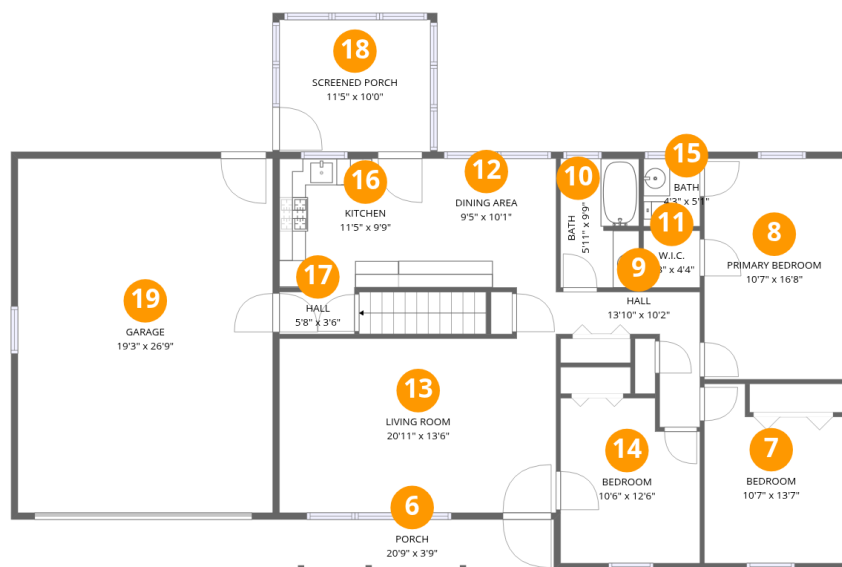
Total:989sqft

Excluded: 250sqft

#		Dimensions	sqft	Counted as living area
1	Hall	4'7" x 3'2"	15 sq. ft	Yes
2	Bath	4'7" x 6'3"	29 sq. ft	Yes
3	Recreation Room	37'5" x 30'6"	1142 sq. ft	Yes
4	W.I.C.	4'11" x 11'8"	57 sq. ft	Yes
5	Utility	17'0" x 14'8"	249 sq. ft	No

Home data report

962 West Areba Avenue, Hershey, Dauphin County, Pennsylvania, United States, 17033



Room dimensions

Floor 2

Total:1221sqft Excluded: 708sqft

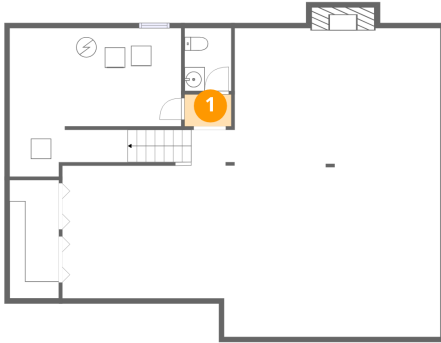
#		Dimensions	sqft	Counted as living area
6	Porch	20'9" x 3'9"	78 sq. ft	No
7	Bedroom	10'7" x 13'7"	143 sq. ft	Yes
8	Primary Bedroom	10'7" x 16'8"	176 sq. ft	Yes
9	Hall	13'10" x 10'2"	141 sq. ft	Yes
10	Bath	5'11" x 9'9"	58 sq. ft	Yes
11	W.I.C.	4'3" x 4'4"	18 sq. ft	Yes
12	Dining Area	9'5" x 10'1"	95 sq. ft	Yes
13	Living Room	20'11" x 13'6"	282 sq. ft	Yes
14	Bedroom	10'6" x 12'6"	131 sq. ft	Yes
15	Bath	4'3" x 5'1"	22 sq. ft	Yes
16	Kitchen	11'5" x 9'9"	111 sq. ft	Yes

Home data report

**962 West Areba Avenue, Hershey, Dauphin County,
Pennsylvania, United States, 17033**

#		Dimensions	sqft	Counted as living area
17	Hall	5'8" x 3'6"	20 sq. ft	Yes
18	Screened Porch	11'5" x 10'0"	113 sq. ft	No
19	Garage	19'3" x 26'9"	515 sq. ft	No

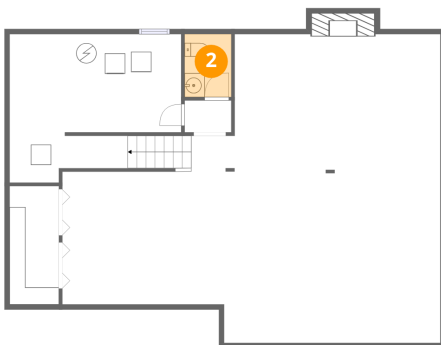
1 Floor 1 - Hall



Dimensions: 4'7" x 3'2"
Area: 15 sq. ft
Counted as living area: Yes

Heated: Yes
Finished: Yes
Enclosed: Yes
Contiguous: Yes
Permitted: Yes
Wet space: No
Addition: No
Conversion: No

2 Floor 1 - Bath

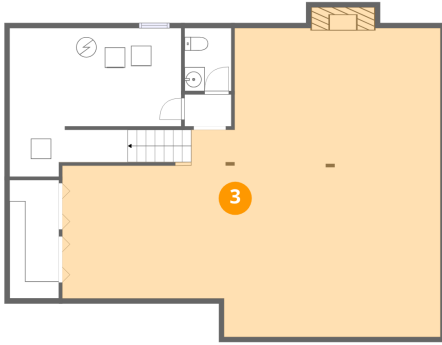


Dimensions: 4'7" x 6'3"
Area: 29 sq. ft
Counted as living area: Yes

Heated: Yes
Finished: Yes
Enclosed: Yes
Contiguous: Yes
Permitted: Yes
Wet space: Yes
Addition: No
Conversion: No

962 West Areba Avenue, Hershey, Dauphin County,
Pennsylvania, United States, 17033

3 Floor 1 - Recreation Room



Dimensions: 37'5" x 30'6"
Area: 1142 sq. ft
Counted as living area: Yes

Heated: Yes
Finished: Yes
Enclosed: Yes
Contiguous: Yes
Permitted: Yes
Wet space: No
Addition: No
Conversion: No

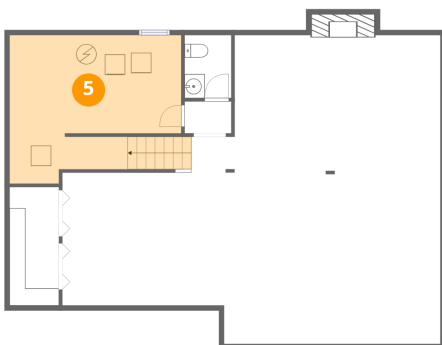
4 Floor 1 - W.I.C.



Dimensions: 4'11" x 11'8"
Area: 57 sq. ft
Counted as living area: Yes

Heated: Yes
Finished: Yes
Enclosed: Yes
Contiguous: Yes
Permitted: Yes
Wet space: No
Addition: No
Conversion: No

5 Floor 1 - Utility



Dimensions: 17'0" x 14'8"
Area: 249 sq. ft
Counted as living area: No

Heated: Yes
Finished: No
Enclosed: Yes
Contiguous: Yes
Permitted: Yes
Wet space: No
Addition: No
Conversion: No

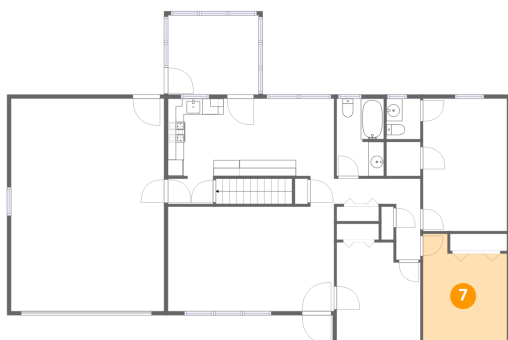
6 Floor 2 - Porch



Dimensions: 20'9" x 3'9"
Area: 78 sq. ft
Counted as living area: No

Heated: No
Finished: No
Enclosed: No
Contiguous: Yes
Permitted: Yes
Wet space: No
Addition: No
Conversion: No

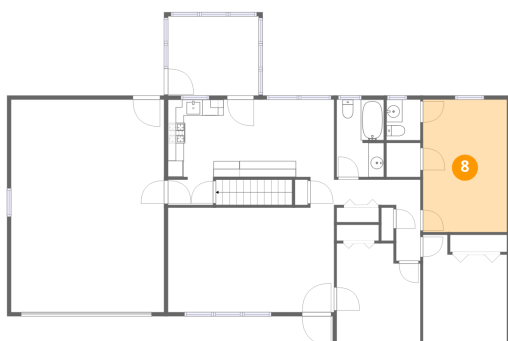
7 Floor 2 - Bedroom



Dimensions: 10'7" x 13'7"
Area: 143 sq. ft
Counted as living area: Yes

Heated: Yes
Finished: Yes
Enclosed: Yes
Contiguous: Yes
Permitted: Yes
Wet space: No
Addition: No
Conversion: No

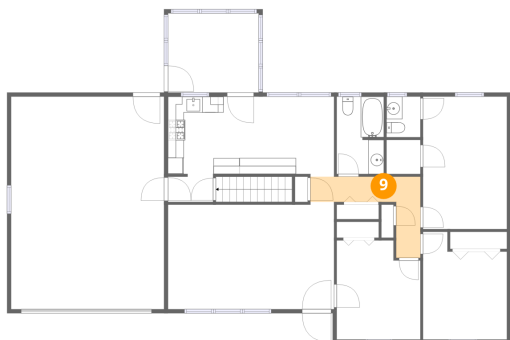
8 Floor 2 - Primary Bedroom



Dimensions: 10'7" x 16'8"
Area: 176 sq. ft
Counted as living area: Yes

Heated: Yes
Finished: Yes
Enclosed: Yes
Contiguous: Yes
Permitted: Yes
Wet space: No
Addition: No
Conversion: No

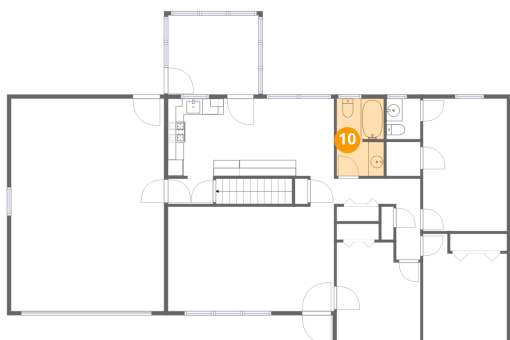
9 Floor 2 - Hall



Dimensions: 13'10" x 10'2"
Area: 141 sq. ft
Counted as living area: Yes

Heated: Yes
Finished: Yes
Enclosed: Yes
Contiguous: Yes
Permitted: Yes
Wet space: No
Addition: No
Conversion: No

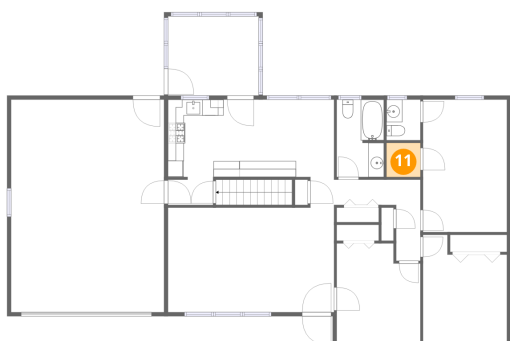
10 Floor 2 - Bath



Dimensions: 5'11" x 9'9"
Area: 58 sq. ft
Counted as living area: Yes

Heated: Yes
Finished: Yes
Enclosed: Yes
Contiguous: Yes
Permitted: Yes
Wet space: Yes
Addition: No
Conversion: No

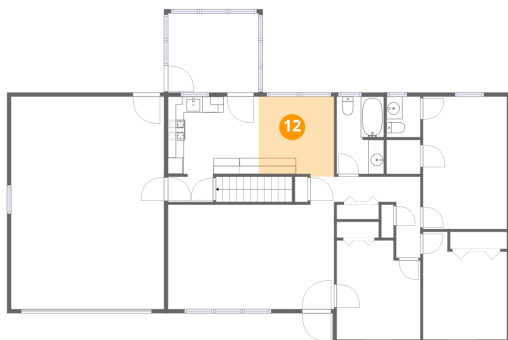
11 Floor 2 - W.I.C.



Dimensions: 4'3" x 4'4"
Area: 18 sq. ft
Counted as living area: Yes

Heated: Yes
Finished: Yes
Enclosed: Yes
Contiguous: Yes
Permitted: Yes
Wet space: No
Addition: No
Conversion: No

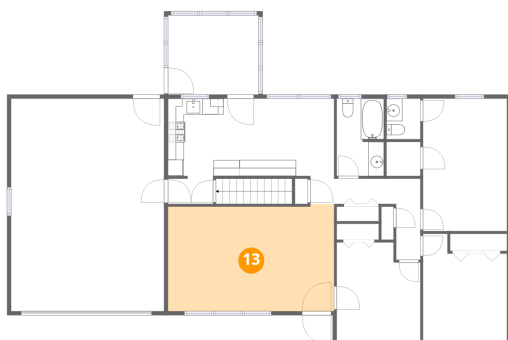
12 Floor 2 - Dining Area



Dimensions: 9'5" x 10'1"
Area: 95 sq. ft
Counted as living area: Yes

Heated: Yes
Finished: Yes
Enclosed: Yes
Contiguous: Yes
Permitted: Yes
Wet space: No
Addition: No
Conversion: No

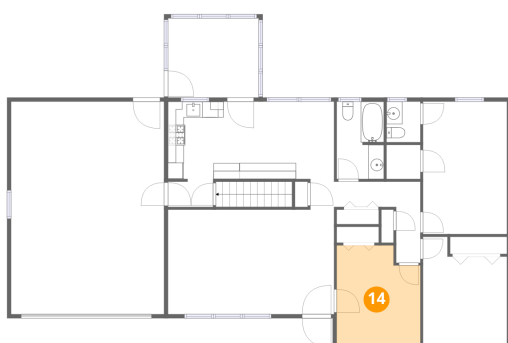
13 Floor 2 - Living Room



Dimensions: 20'11" x 13'6"
Area: 282 sq. ft
Counted as living area: Yes

Heated: Yes
Finished: Yes
Enclosed: Yes
Contiguous: Yes
Permitted: Yes
Wet space: No
Addition: No
Conversion: No

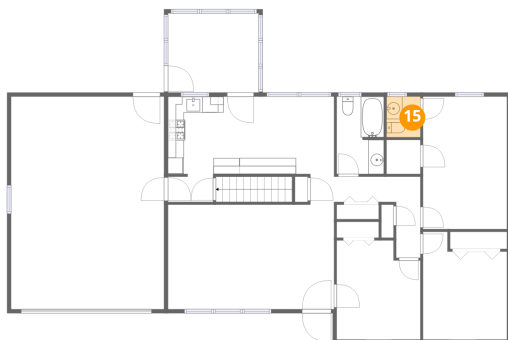
14 Floor 2 - Bedroom



Dimensions: 10'6" x 12'6"
Area: 131 sq. ft
Counted as living area: Yes

Heated: Yes
Finished: Yes
Enclosed: Yes
Contiguous: Yes
Permitted: Yes
Wet space: No
Addition: No
Conversion: No

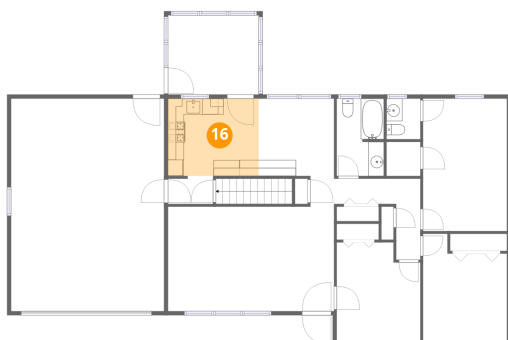
15 Floor 2 - Bath



Dimensions: 4'3" x 5'1"
Area: 22 sq. ft
Counted as living area: Yes

Heated: Yes
Finished: Yes
Enclosed: Yes
Contiguous: Yes
Permitted: Yes
Wet space: Yes
Addition: No
Conversion: No

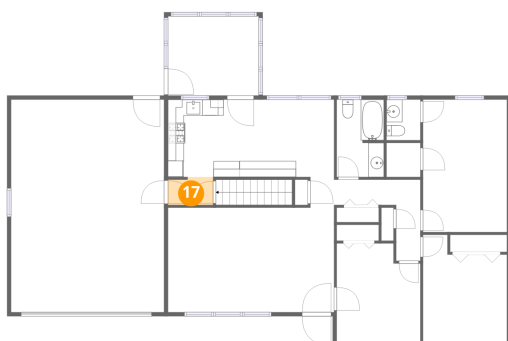
16 Floor 2 - Kitchen



Dimensions: 11'5" x 9'9"
Area: 111 sq. ft
Counted as living area: Yes

Heated: Yes
Finished: Yes
Enclosed: Yes
Contiguous: Yes
Permitted: Yes
Wet space: No
Addition: No
Conversion: No

17 Floor 2 - Hall



Dimensions: 5'8" x 3'6"
Area: 20 sq. ft
Counted as living area: Yes

Heated: Yes
Finished: Yes
Enclosed: Yes
Contiguous: Yes
Permitted: Yes
Wet space: No
Addition: No
Conversion: No

962 West Areba Avenue, Hershey, Dauphin County,
Pennsylvania, United States, 17033

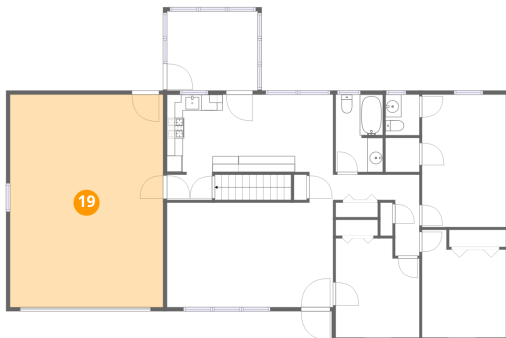
18 Floor 2 - Screened Porch



Dimensions: 11'5" x 10'0"
Area: 113 sq. ft
Counted as living area: No

Heated: No
Finished: No
Enclosed: No
Contiguous: Yes
Permitted: Yes
Wet space: No
Addition: No
Conversion: No

19 Floor 2 - Garage



Dimensions: 19'3" x 26'9"
Area: 515 sq. ft
Counted as living area: No

Heated: No
Finished: No
Enclosed: Yes
Contiguous: Yes
Permitted: Yes
Wet space: No
Addition: No
Conversion: No