

Home data report

1087 Strawberry Hill Court, Vinton, Bedford County, Virginia, United States, 24179



Total Area: 4142 sq. ft

1st Floor: 1275 sq. ft, 2nd Floor: 1612 sq. ft, 3rd Floor: 1255 sq. ft

Excluded: Storage 149 sq. ft, Garage 1234 sq. ft, Covered patio 1258 sq. ft, Undefined 20 sq. ft, Porch 665 sq. ft, Deck 1154 sq. ft, Fireplace 12 sq. ft, Open to below 307 sq. ft, Low ceiling 135 sq. ft, Attic 87 sq. ft, Walls: 413 sq. ft

Property summary



Home data report

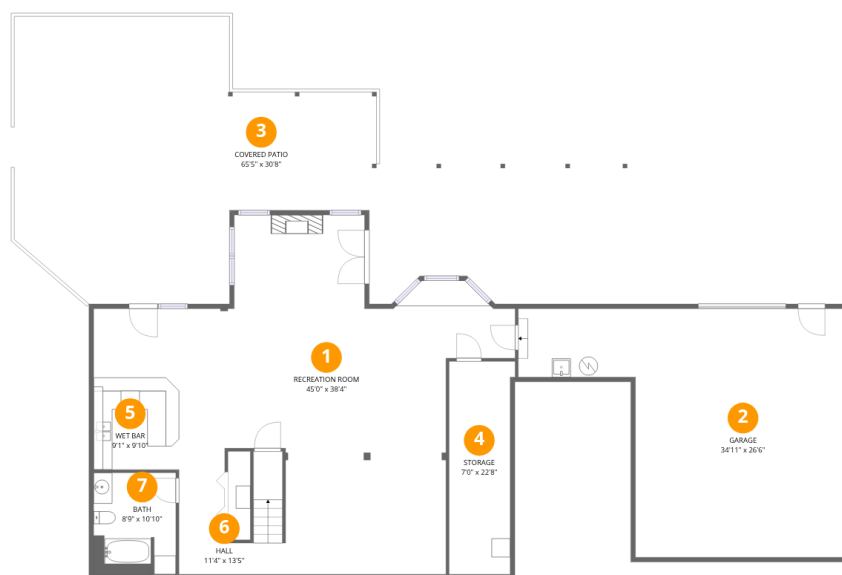
**1087 Strawberry Hill Court, Vinton, Bedford County, Virginia,
United States, 24179**

 **1**
Half baths

 **2**
Garages

Home data report

1087 Strawberry Hill Court, Vinton, Bedford County, Virginia,
United States, 24179



Room dimensions

Floor 1

Total:1275sqft Excluded: 2094sqft

#		Dimensions	sqft	Counted as living area
1	Recreation Room	45'0" x 38'4"	1722 sq. ft	Yes
2	Garage	34'11" x 26'6"	926 sq. ft	No
3	Covered Patio	65'5" x 30'8"	2003 sq. ft	No
4	Storage	7'0" x 22'8"	159 sq. ft	No
5	Wet Bar	9'1" x 9'10"	89 sq. ft	Yes
6	Hall	11'4" x 13'5"	153 sq. ft	Yes
7	Bath	8'9" x 10'10"	95 sq. ft	Yes

Home data report

1087 Strawberry Hill Court, Vinton, Bedford County, Virginia, United States, 24179



Room dimensions

Floor 2

Total:1612sqft

Excluded: 2398sqft

#		Dimensions	sqft	Counted as living area
8	Foyer	12'7" x 13'5"	170 sq. ft	Yes
9	Breakfast Area	14'5" x 7'9"	111 sq. ft	Yes
10	W.I.C.	8'4" x 7'11"	66 sq. ft	Yes
11	Dining Area	14'5" x 13'5"	194 sq. ft	Yes
12	Garage	22'5" x 26'6"	595 sq. ft	No
13	Laundry	12'8" x 7'4"	92 sq. ft	Yes
14	Bath	6'9" x 7'1"	48 sq. ft	Yes
15	Deck	66'3" x 36'6"	2417 sq. ft	No
16	Primary Bath	11'10" x 15'4"	181 sq. ft	Yes
17	Primary Bedroom	17'6" x 13'5"	234 sq. ft	Yes
18	Living Room	15'8" x 25'4"	397 sq. ft	Yes

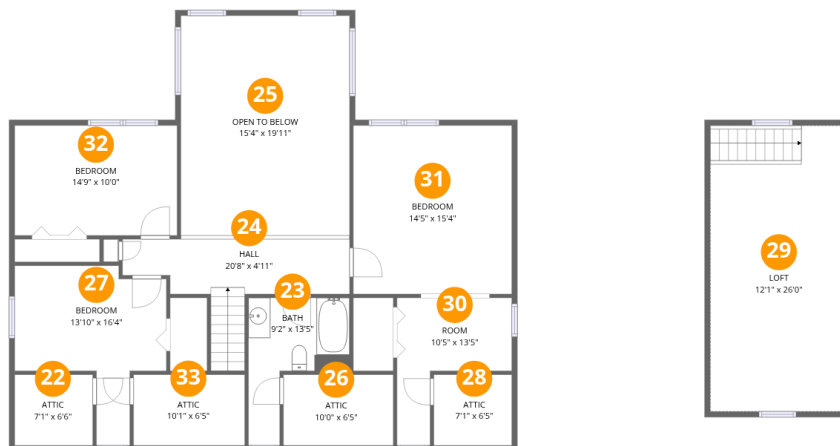
Home data report

**1087 Strawberry Hill Court, Vinton, Bedford County, Virginia,
United States, 24179**

#		Dimensions	sqft	Counted as living area
19	Kitchen	14'5" x 10'7"	153 sq. ft	Yes
20	Bath	3'8" x 6'11"	25 sq. ft	Yes
21	Porch	61'9" x 18'1"	1117 sq. ft	No

Home data report

1087 Strawberry Hill Court, Vinton, Bedford County, Virginia, United States, 24179



Room dimensions

Floor 3

Total:1255sqft Excluded: 529sqft

#		Dimensions	sqft	Counted as living area
22	Attic	7'1" x 6'6"	46 sq. ft	No
23	Bath	9'2" x 13'5"	124 sq. ft	Yes
24	Hall	20'8" x 4'11"	102 sq. ft	Yes
25	Open To Below	15'4" x 19'11"	306 sq. ft	No
26	Attic	10'0" x 6'5"	64 sq. ft	No
27	Bedroom	13'10" x 16'4"	225 sq. ft	Yes
28	Attic	7'1" x 6'5"	45 sq. ft	No
29	Loft	12'1" x 26'0"	315 sq. ft	Yes
30	Room	10'5" x 13'5"	140 sq. ft	Yes
31	Bedroom	14'5" x 15'4"	220 sq. ft	Yes
32	Bedroom	14'9" x 10'0"	147 sq. ft	Yes

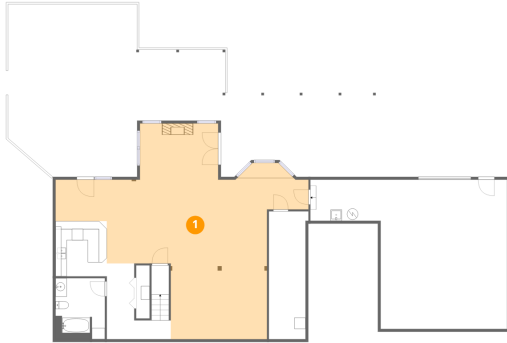
Home data report

**1087 Strawberry Hill Court, Vinton, Bedford County, Virginia,
United States, 24179**

#		Dimensions	sqft	Counted as living area
33	Attic	10'1" x 6'5"	65 sq. ft	No

**1087 Strawberry Hill Court, Vinton, Bedford County, Virginia,
United States, 24179**

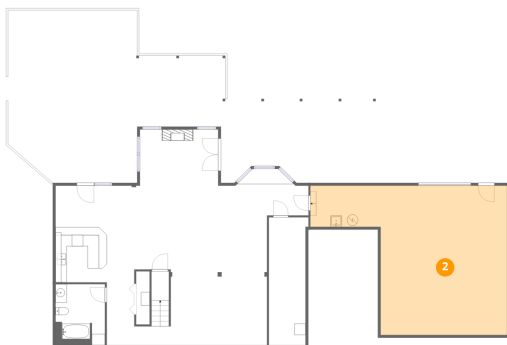
1 Floor 1 - Recreation Room



Dimensions: 45'0" x 38'4"
Area: 1722 sq. ft
Counted as living area: Yes

Heated: Yes
Finished: Yes
Enclosed: Yes
Contiguous: Yes
Permitted: Yes
Wet space: No
Addition: No
Conversion: No

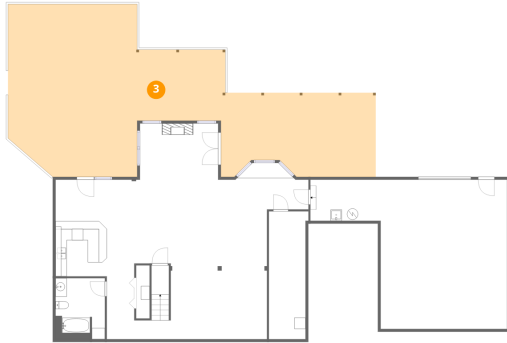
2 Floor 1 - Garage



Dimensions: 34'11" x 26'6"
Area: 926 sq. ft
Counted as living area: No

Heated: No
Finished: No
Enclosed: Yes
Contiguous: Yes
Permitted: Yes
Wet space: No
Addition: No
Conversion: No

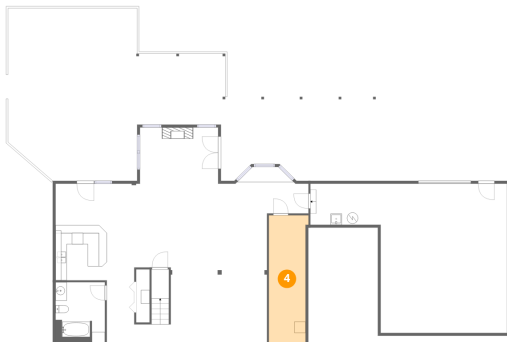
3 Floor 1 - Covered Patio



Dimensions: 65'5" x 30'8"
Area: 2003 sq. ft
Counted as living area: No

Heated: No
Finished: No
Enclosed: No
Contiguous: Yes
Permitted: Yes
Wet space: No
Addition: No
Conversion: No

4 Floor 1 - Storage



Dimensions: 7'0" x 22'8"
Area: 159 sq. ft
Counted as living area: No

Heated: No
Finished: No
Enclosed: No
Contiguous: Yes
Permitted: Yes
Wet space: No
Addition: No
Conversion: No

5 Floor 1 - Wet Bar

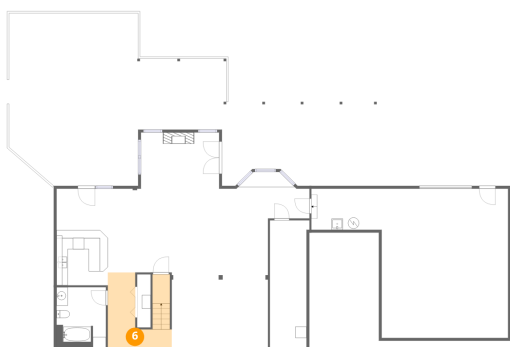


Dimensions: 9'1" x 9'10"
Area: 89 sq. ft
Counted as living area: Yes

Heated: Yes
Finished: Yes
Enclosed: Yes
Contiguous: Yes
Permitted: Yes
Wet space: No
Addition: No
Conversion: No

1087 Strawberry Hill Court, Vinton, Bedford County, Virginia,
United States, 24179

6 Floor 1 - Hall



Dimensions: 11'4" x 13'5"
Area: 153 sq. ft
Counted as living area: Yes

Heated: Yes
Finished: Yes
Enclosed: Yes
Contiguous: Yes
Permitted: Yes
Wet space: No
Addition: No
Conversion: No

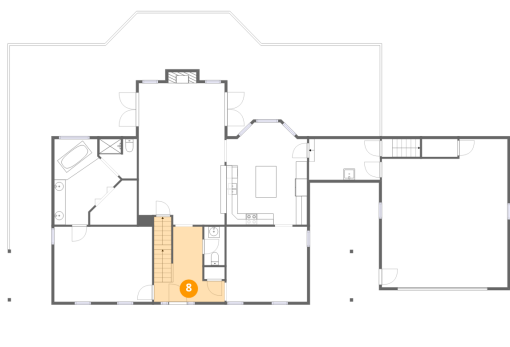
7 Floor 1 - Bath



Dimensions: 8'9" x 10'10"
Area: 95 sq. ft
Counted as living area: Yes

Heated: Yes
Finished: Yes
Enclosed: Yes
Contiguous: Yes
Permitted: Yes
Wet space: Yes
Addition: No
Conversion: No

8 Floor 2 - Foyer

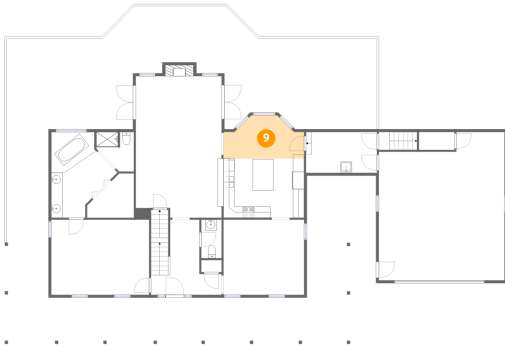


Dimensions: 12'7" x 13'5"
Area: 170 sq. ft
Counted as living area: Yes

Heated: Yes
Finished: Yes
Enclosed: Yes
Contiguous: Yes
Permitted: Yes
Wet space: No
Addition: No
Conversion: No

1087 Strawberry Hill Court, Vinton, Bedford County, Virginia,
United States, 24179

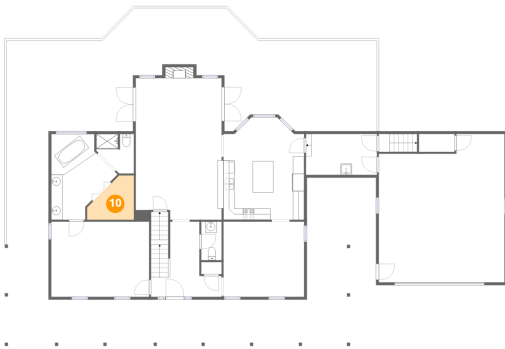
9 Floor 2 - Breakfast Area



Dimensions: 14'5" x 7'9"
Area: 111 sq. ft
Counted as living area: Yes

Heated: Yes
Finished: Yes
Enclosed: Yes
Contiguous: Yes
Permitted: Yes
Wet space: No
Addition: No
Conversion: No

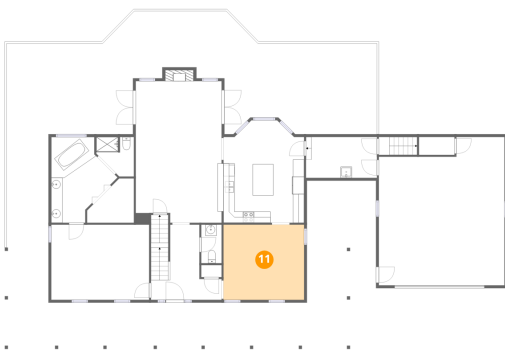
10 Floor 2 - W.I.C.



Dimensions: 8'4" x 7'11"
Area: 66 sq. ft
Counted as living area: Yes

Heated: Yes
Finished: Yes
Enclosed: Yes
Contiguous: Yes
Permitted: Yes
Wet space: No
Addition: No
Conversion: No

11 Floor 2 - Dining Area

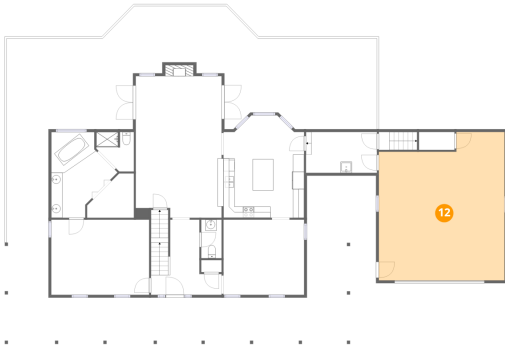


Dimensions: 14'5" x 13'5"
Area: 194 sq. ft
Counted as living area: Yes

Heated: Yes
Finished: Yes
Enclosed: Yes
Contiguous: Yes
Permitted: Yes
Wet space: No
Addition: No
Conversion: No

1087 Strawberry Hill Court, Vinton, Bedford County, Virginia,
United States, 24179

12 Floor 2 - Garage



Dimensions: 22'5" x 26'6"
Area: 595 sq. ft
Counted as living area: No

Heated: No
Finished: No
Enclosed: Yes
Contiguous: Yes
Permitted: Yes
Wet space: No
Addition: No
Conversion: No

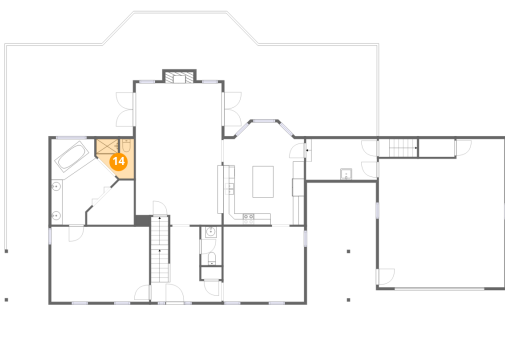
13 Floor 2 - Laundry



Dimensions: 12'8" x 7'4"
Area: 92 sq. ft
Counted as living area: Yes

Heated: Yes
Finished: Yes
Enclosed: Yes
Contiguous: Yes
Permitted: Yes
Wet space: No
Addition: No
Conversion: No

14 Floor 2 - Bath

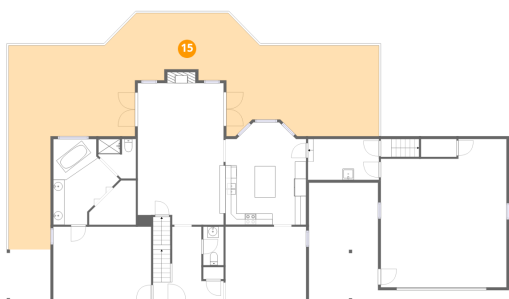


Dimensions: 6'9" x 7'1"
Area: 48 sq. ft
Counted as living area: Yes

Heated: Yes
Finished: Yes
Enclosed: Yes
Contiguous: Yes
Permitted: Yes
Wet space: Yes
Addition: No
Conversion: No

1087 Strawberry Hill Court, Vinton, Bedford County, Virginia,
United States, 24179

15 Floor 2 - Deck



Dimensions: 66'3" x 36'6"
Area: 2417 sq. ft
Counted as living area: No

Heated: No
Finished: No
Enclosed: No
Contiguous: Yes
Permitted: Yes
Wet space: No
Addition: No
Conversion: No

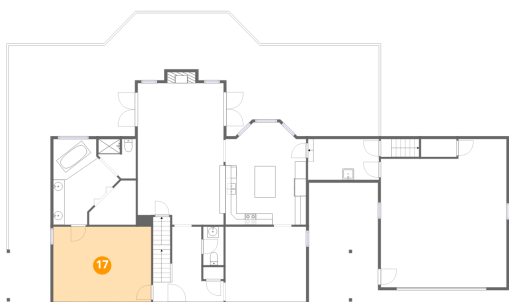
16 Floor 2 - Primary Bath



Dimensions: 11'10" x 15'4"
Area: 181 sq. ft
Counted as living area: Yes

Heated: Yes
Finished: Yes
Enclosed: Yes
Contiguous: Yes
Permitted: Yes
Wet space: Yes
Addition: No
Conversion: No

17 Floor 2 - Primary Bedroom

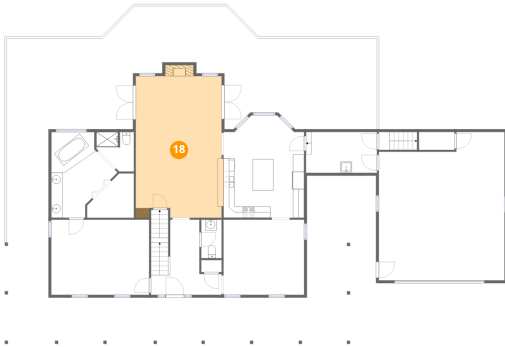


Dimensions: 17'6" x 13'5"
Area: 234 sq. ft
Counted as living area: Yes

Heated: Yes
Finished: Yes
Enclosed: Yes
Contiguous: Yes
Permitted: Yes
Wet space: No
Addition: No
Conversion: No

1087 Strawberry Hill Court, Vinton, Bedford County, Virginia,
United States, 24179

18 Floor 2 - Living Room



Dimensions: 15'8" x 25'4"
Area: 397 sq. ft
Counted as living area: Yes

Heated: Yes
Finished: Yes
Enclosed: Yes
Contiguous: Yes
Permitted: Yes
Wet space: No
Addition: No
Conversion: No

19 Floor 2 - Kitchen



Dimensions: 14'5" x 10'7"
Area: 153 sq. ft
Counted as living area: Yes

Heated: Yes
Finished: Yes
Enclosed: Yes
Contiguous: Yes
Permitted: Yes
Wet space: No
Addition: No
Conversion: No

20 Floor 2 - Bath

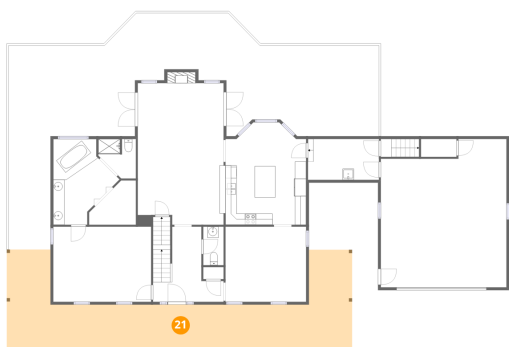


Dimensions: 3'8" x 6'11"
Area: 25 sq. ft
Counted as living area: Yes

Heated: Yes
Finished: Yes
Enclosed: Yes
Contiguous: Yes
Permitted: Yes
Wet space: Yes
Addition: No
Conversion: No

1087 Strawberry Hill Court, Vinton, Bedford County, Virginia,
United States, 24179

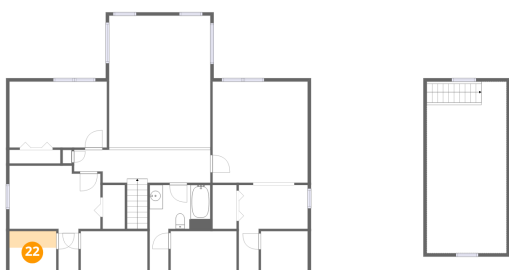
21 Floor 2 - Porch



Dimensions: 61'9" x 18'1"
Area: 1117 sq. ft
Counted as living area: No

Heated: No
Finished: No
Enclosed: No
Contiguous: Yes
Permitted: Yes
Wet space: No
Addition: No
Conversion: No

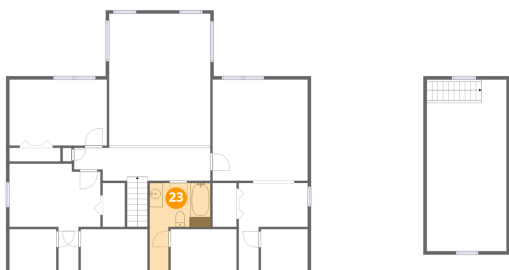
22 Floor 3 - Attic



Dimensions: 7'1" x 6'6"
Area: 46 sq. ft
Counted as living area: No

Heated: No
Finished: No
Enclosed: Yes
Contiguous: Yes
Permitted: Yes
Wet space: No
Addition: No
Conversion: No

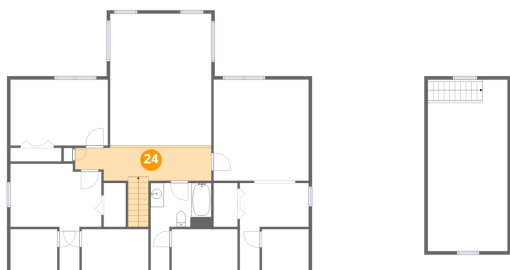
23 Floor 3 - Bath



Dimensions: 9'2" x 13'5"
Area: 124 sq. ft
Counted as living area: Yes

Heated: Yes
Finished: Yes
Enclosed: Yes
Contiguous: Yes
Permitted: Yes
Wet space: Yes
Addition: No
Conversion: No

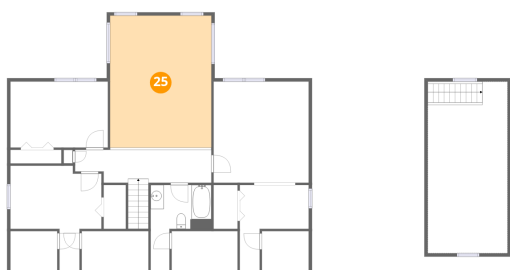
24 Floor 3 - Hall



Dimensions: 20'8" x 4'11"
Area: 102 sq. ft
Counted as living area: Yes

Heated: Yes
Finished: Yes
Enclosed: Yes
Contiguous: Yes
Permitted: Yes
Wet space: No
Addition: No
Conversion: No

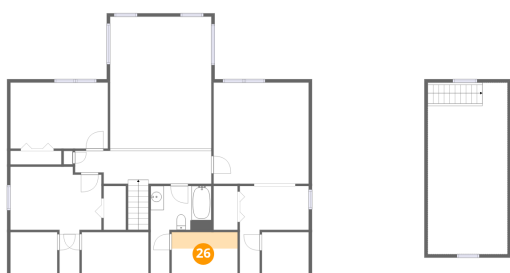
25 Floor 3 - Open To Below



Dimensions: 15'4" x 19'11"
Area: 306 sq. ft
Counted as living area: No

Heated: No
Finished: No
Enclosed: No
Contiguous: Yes
Permitted: No
Wet space: No
Addition: No
Conversion: No

26 Floor 3 - Attic



Dimensions: 10'0" x 6'5"
Area: 64 sq. ft
Counted as living area: No

Heated: No
Finished: No
Enclosed: Yes
Contiguous: Yes
Permitted: Yes
Wet space: No
Addition: No
Conversion: No

1087 Strawberry Hill Court, Vinton, Bedford County, Virginia,
United States, 24179

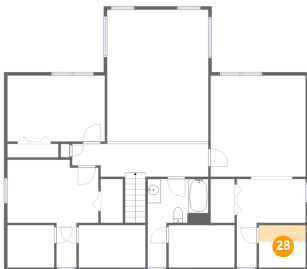
27 Floor 3 - Bedroom



Dimensions: 13'10" x 16'4"
Area: 225 sq. ft
Counted as living area: Yes

Heated: Yes
Finished: Yes
Enclosed: Yes
Contiguous: Yes
Permitted: Yes
Wet space: No
Addition: No
Conversion: No

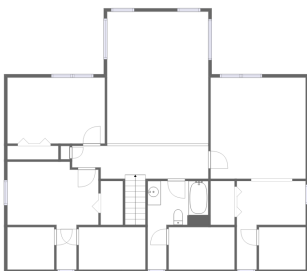
28 Floor 3 - Attic



Dimensions: 7'1" x 6'5"
Area: 45 sq. ft
Counted as living area: No

Heated: No
Finished: No
Enclosed: Yes
Contiguous: Yes
Permitted: Yes
Wet space: No
Addition: No
Conversion: No

29 Floor 3 - Loft



Dimensions: 12'1" x 26'0"
Area: 315 sq. ft
Counted as living area: Yes

Heated: Yes
Finished: Yes
Enclosed: Yes
Contiguous: Yes
Permitted: Yes
Wet space: No
Addition: No
Conversion: No

1087 Strawberry Hill Court, Vinton, Bedford County, Virginia,
United States, 24179

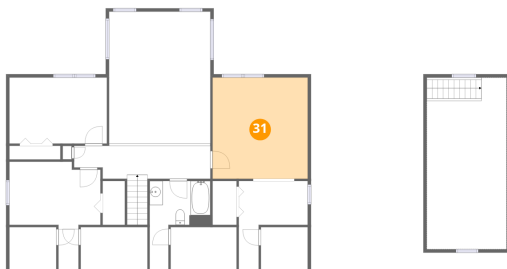
30 Floor 3 - Room



Dimensions: 10'5" x 13'5"
Area: 140 sq. ft
Counted as living area: Yes

Heated: Yes
Finished: Yes
Enclosed: Yes
Contiguous: Yes
Permitted: Yes
Wet space: No
Addition: No
Conversion: No

31 Floor 3 - Bedroom



Dimensions: 14'5" x 15'4"
Area: 220 sq. ft
Counted as living area: Yes

Heated: Yes
Finished: Yes
Enclosed: Yes
Contiguous: Yes
Permitted: Yes
Wet space: No
Addition: No
Conversion: No

32 Floor 3 - Bedroom

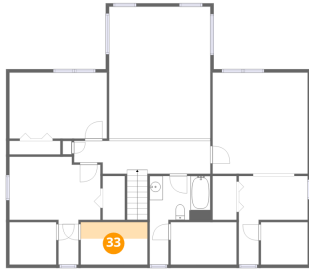


Dimensions: 14'9" x 10'0"
Area: 147 sq. ft
Counted as living area: Yes

Heated: Yes
Finished: Yes
Enclosed: Yes
Contiguous: Yes
Permitted: Yes
Wet space: No
Addition: No
Conversion: No

1087 Strawberry Hill Court, Vinton, Bedford County, Virginia,
United States, 24179

33 Floor 3 - Attic



Dimensions: 10'1" x 6'5"
Area: 65 sq. ft
Counted as living area: No

Heated: No
Finished: No
Enclosed: Yes
Contiguous: Yes
Permitted: Yes
Wet space: No
Addition: No
Conversion: No