

Home data report

6275 Smokey Ridge Road, Roanoke, Virginia 24018, United States



Total Area: 2329 sq. ft

Basement: 957 sq. ft, 1st Floor: 1027 sq. ft, 2nd Floor: 345 sq. ft

Excluded: Basement 210 sq. ft, Balcony 378 sq. ft, Fireplace 19 sq. ft, Walls: 177 sq. ft

Property summary

 **3** Floors

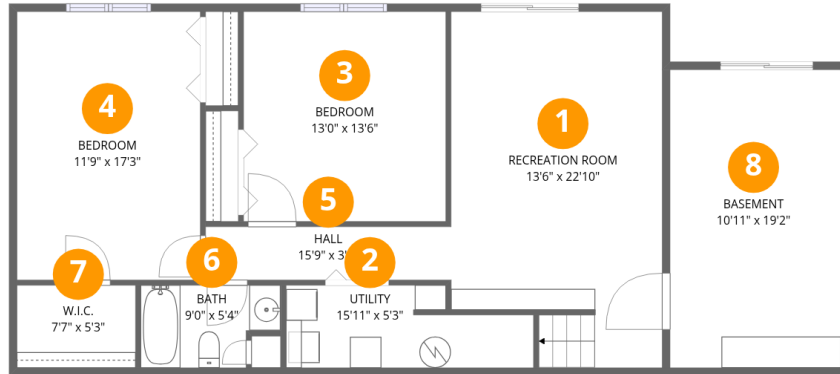
 **3** Bedrooms

 **2** Bathrooms

 **1** Half baths

Home data report

6275 Smokey Ridge Road, Roanoke, Virginia 24018, United States



Room dimensions

Floor 1 Below grade

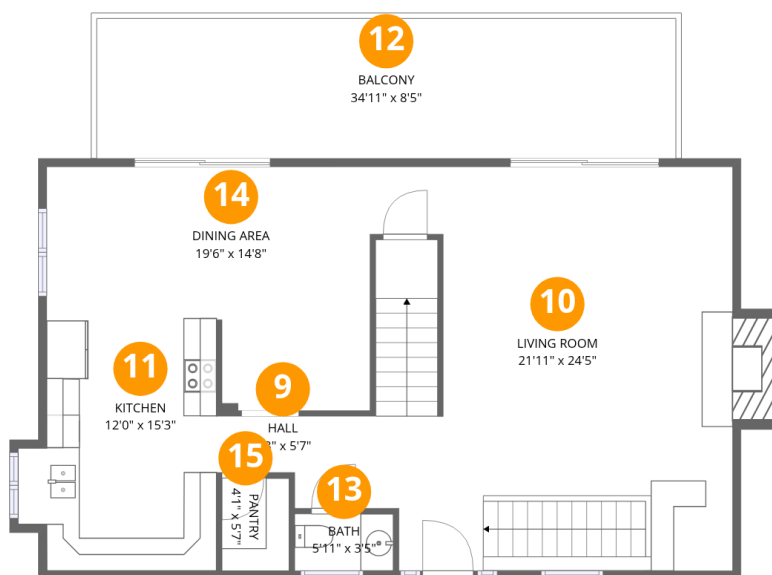
Total:957sqft

Excluded: 210sqft

#		Dimensions	sqft	Counted as living area
1	Recreation Room	13'6" x 22'10"	288 sq. ft	Yes
2	Utility	15'11" x 5'3"	73 sq. ft	Yes
3	Bedroom	13'0" x 13'6"	175 sq. ft	Yes
4	Bedroom	11'9" x 17'3"	203 sq. ft	Yes
5	Hall	15'9" x 3'5"	54 sq. ft	Yes
6	Bath	9'0" x 5'4"	42 sq. ft	Yes
7	W.I.C.	7'7" x 5'3"	40 sq. ft	Yes
8	Basement	10'11" x 19'2"	210 sq. ft	No

Home data report

6275 Smokey Ridge Road, Roanoke, Virginia 24018, United States



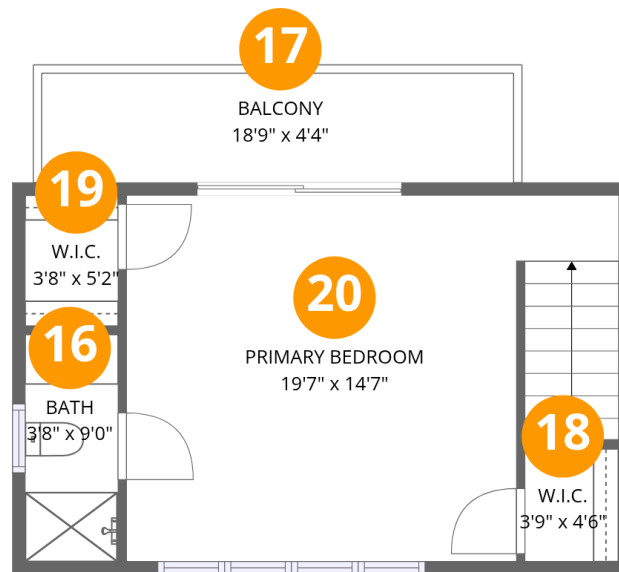
Room dimensions

Floor 2

Total:1027sqft Excluded: 315sqft

#		Dimensions	sqft	Counted as living area
9	Hall	9'3" x 5'7"	41 sq. ft	Yes
10	Living Room	21'11" x 24'5"	545 sq. ft	Yes
11	Kitchen	12'0" x 15'3"	164 sq. ft	Yes
12	Balcony	34'11" x 8'5"	296 sq. ft	No
13	Bath	5'11" x 3'5"	21 sq. ft	Yes
14	Dining Area	19'6" x 14'8"	238 sq. ft	Yes
15	Pantry	4'1" x 5'7"	23 sq. ft	Yes

6275 Smokey Ridge Road, Roanoke, Virginia 24018, United States



Room dimensions

Floor 3

Total:345sqft Excluded: 82sqft

#		Dimensions	sqft	Counted as living area
16	Bath	3'8" x 9'0"	33 sq. ft	Yes
17	Balcony	18'9" x 4'4"	82 sq. ft	No
18	W.I.C.	3'9" x 4'6"	17 sq. ft	Yes
19	W.I.C.	3'8" x 5'2"	19 sq. ft	Yes
20	Primary Bedroom	19'7" x 14'7"	264 sq. ft	Yes

6275 Smokey Ridge Road, Roanoke, Virginia 24018, United States

1 Floor 1 - Recreation Room



Dimensions: 13'6" x 22'10"
Area: 288 sq. ft
Counted as living area: Yes

Heated: Yes
Finished: Yes
Enclosed: Yes
Contiguous: Yes
Permitted: Yes
Wet space: No
Addition: No
Conversion: No

2 Floor 1 - Utility



Dimensions: 15'11" x 5'3"
Area: 73 sq. ft
Counted as living area: Yes

Heated: Yes
Finished: Yes
Enclosed: Yes
Contiguous: Yes
Permitted: Yes
Wet space: No
Addition: No
Conversion: No

6275 Smokey Ridge Road, Roanoke, Virginia 24018, United States

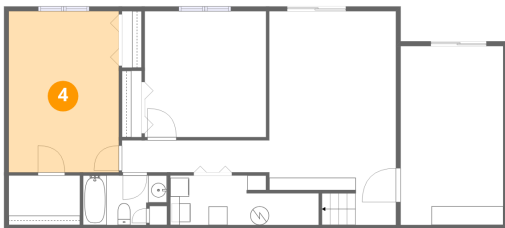
3 Floor 1 - Bedroom



Dimensions: 13'0" x 13'6"
Area: 175 sq. ft
Counted as living area: Yes

Heated: Yes
Finished: Yes
Enclosed: Yes
Contiguous: Yes
Permitted: Yes
Wet space: No
Addition: No
Conversion: No

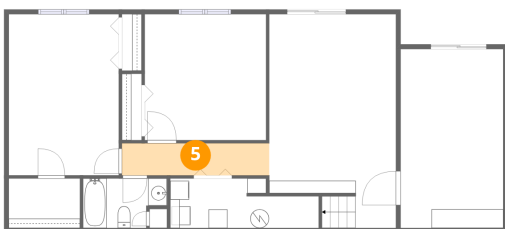
4 Floor 1 - Bedroom



Dimensions: 11'9" x 17'3"
Area: 203 sq. ft
Counted as living area: Yes

Heated: Yes
Finished: Yes
Enclosed: Yes
Contiguous: Yes
Permitted: Yes
Wet space: No
Addition: No
Conversion: No

5 Floor 1 - Hall



Dimensions: 15'9" x 3'5"
Area: 54 sq. ft
Counted as living area: Yes

Heated: Yes
Finished: Yes
Enclosed: Yes
Contiguous: Yes
Permitted: Yes
Wet space: No
Addition: No
Conversion: No

6275 Smokey Ridge Road, Roanoke, Virginia 24018, United States

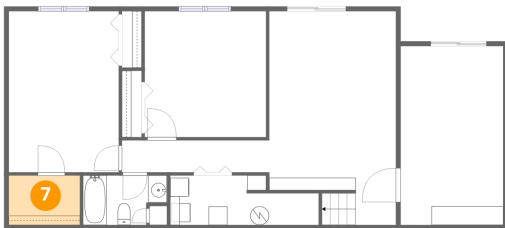
6 Floor 1 - Bath



Dimensions: 9'0" x 5'4"
Area: 42 sq. ft
Counted as living area: Yes

Heated: Yes
Finished: Yes
Enclosed: Yes
Contiguous: Yes
Permitted: Yes
Wet space: Yes
Addition: No
Conversion: No

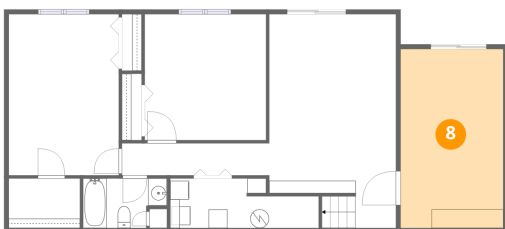
7 Floor 1 - W.I.C.



Dimensions: 7'7" x 5'3"
Area: 40 sq. ft
Counted as living area: Yes

Heated: Yes
Finished: Yes
Enclosed: Yes
Contiguous: Yes
Permitted: Yes
Wet space: No
Addition: No
Conversion: No

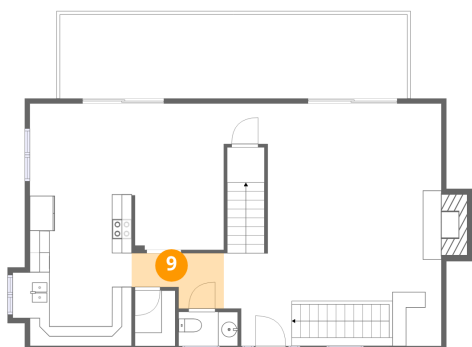
8 Floor 1 - Basement



Dimensions: 10'11" x 19'2"
Area: 210 sq. ft
Counted as living area: No

Heated: Yes
Finished: No
Enclosed: Yes
Contiguous: Yes
Permitted: Yes
Wet space: No
Addition: No
Conversion: No

9 Floor 2 - Hall



Dimensions: 9'3" x 5'7"
Area: 41 sq. ft
Counted as living area: Yes

Heated: Yes
Finished: Yes
Enclosed: Yes
Contiguous: Yes
Permitted: Yes
Wet space: No
Addition: No
Conversion: No

10 Floor 2 - Living Room



Dimensions: 21'11" x 24'5"
Area: 545 sq. ft
Counted as living area: Yes

Heated: Yes
Finished: Yes
Enclosed: Yes
Contiguous: Yes
Permitted: Yes
Wet space: No
Addition: No
Conversion: No

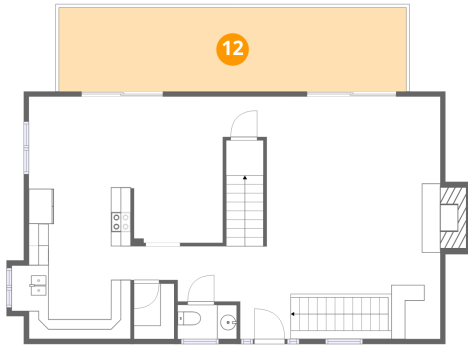
11 Floor 2 - Kitchen



Dimensions: 12'0" x 15'3"
Area: 164 sq. ft
Counted as living area: Yes

Heated: Yes
Finished: Yes
Enclosed: Yes
Contiguous: Yes
Permitted: Yes
Wet space: No
Addition: No
Conversion: No

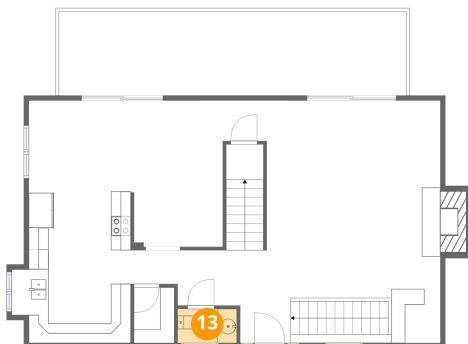
12 Floor 2 - Balcony



Dimensions: 34'11" x 8'5"
Area: 296 sq. ft
Counted as living area: No

Heated: No
Finished: No
Enclosed: No
Contiguous: Yes
Permitted: Yes
Wet space: No
Addition: No
Conversion: No

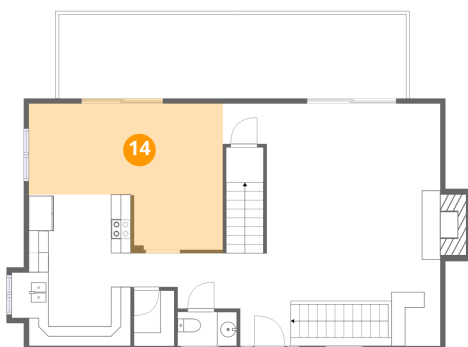
13 Floor 2 - Bath



Dimensions: 5'11" x 3'5"
Area: 21 sq. ft
Counted as living area: Yes

Heated: Yes
Finished: Yes
Enclosed: Yes
Contiguous: Yes
Permitted: Yes
Wet space: Yes
Addition: No
Conversion: No

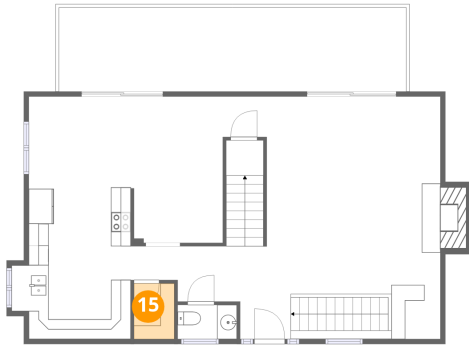
14 Floor 2 - Dining Area



Dimensions: 19'6" x 14'8"
Area: 238 sq. ft
Counted as living area: Yes

Heated: Yes
Finished: Yes
Enclosed: Yes
Contiguous: Yes
Permitted: Yes
Wet space: No
Addition: No
Conversion: No

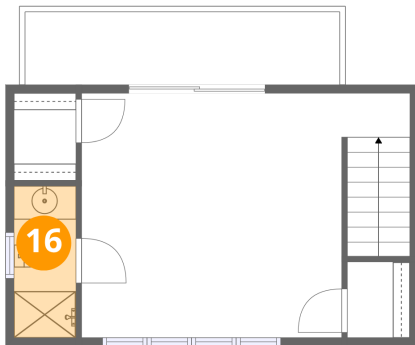
15 Floor 2 - Pantry



Dimensions: 4'1" x 5'7"
Area: 23 sq. ft
Counted as living area: Yes

Heated: Yes
Finished: Yes
Enclosed: Yes
Contiguous: Yes
Permitted: Yes
Wet space: No
Addition: No
Conversion: No

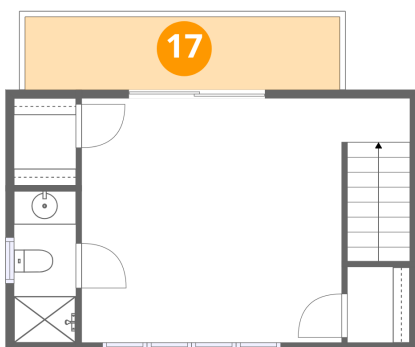
16 Floor 3 - Bath



Dimensions: 3'8" x 9'0"
Area: 33 sq. ft
Counted as living area: Yes

Heated: Yes
Finished: Yes
Enclosed: Yes
Contiguous: Yes
Permitted: Yes
Wet space: Yes
Addition: No
Conversion: No

17 Floor 3 - Balcony

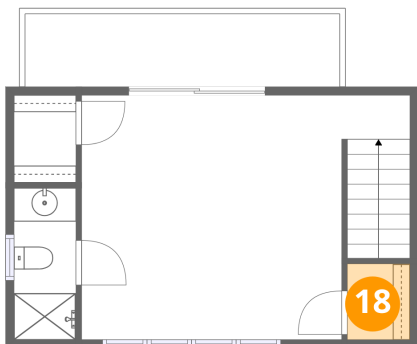


Dimensions: 18'9" x 4'4"
Area: 82 sq. ft
Counted as living area: No

Heated: No
Finished: No
Enclosed: No
Contiguous: Yes
Permitted: Yes
Wet space: No
Addition: No
Conversion: No

6275 Smokey Ridge Road, Roanoke, Virginia 24018, United States

18 Floor 3 - W.I.C.



Dimensions: 3'9" x 4'6"
Area: 17 sq. ft
Counted as living area: Yes

Heated: Yes
Finished: Yes
Enclosed: Yes
Contiguous: Yes
Permitted: Yes
Wet space: No
Addition: No
Conversion: No

19 Floor 3 - W.I.C.



Dimensions: 3'8" x 5'2"
Area: 19 sq. ft
Counted as living area: Yes

Heated: Yes
Finished: Yes
Enclosed: Yes
Contiguous: Yes
Permitted: Yes
Wet space: No
Addition: No
Conversion: No

20 Floor 3 - Primary Bedroom



Dimensions: 19'7" x 14'7"
Area: 264 sq. ft
Counted as living area: Yes

Heated: Yes
Finished: Yes
Enclosed: Yes
Contiguous: Yes
Permitted: Yes
Wet space: No
Addition: No
Conversion: No