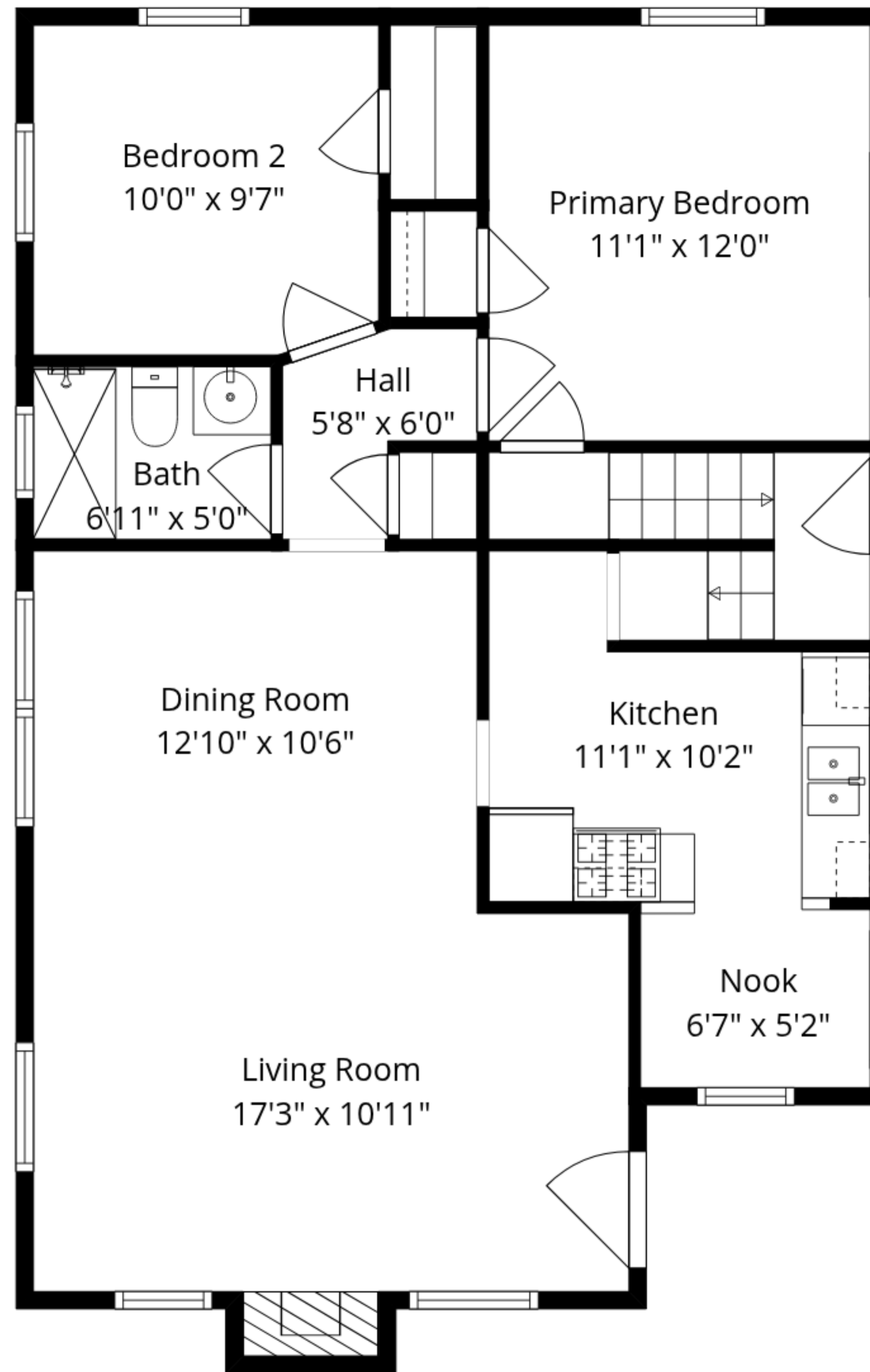


Basement
24'2" x 36'8"

Storage
8'11" x 11'7"

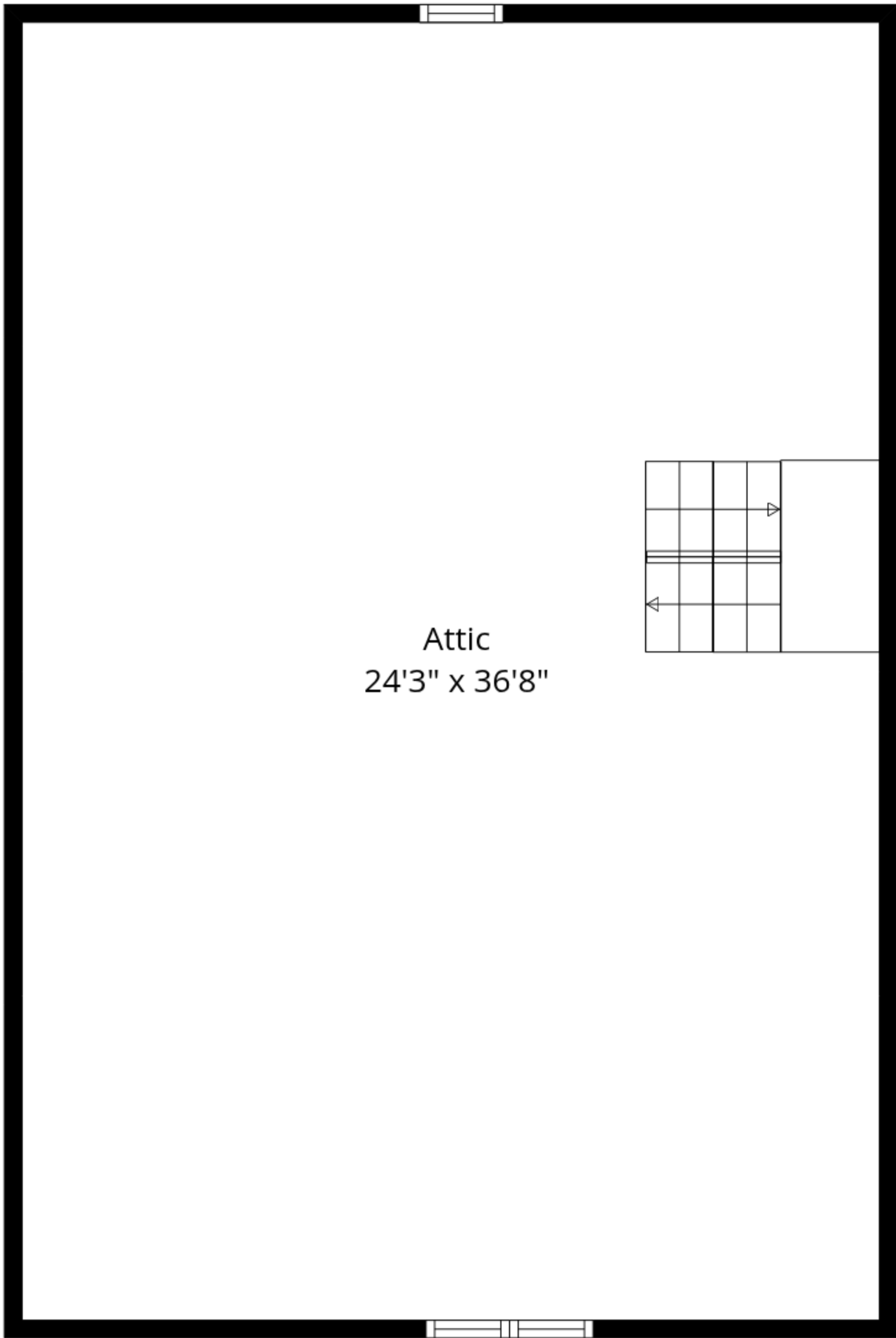
Total GLA: 909 sq. ft | Total: 2881 sq. ft
Floor 1 - Below grade: (Excluded areas 1012 sq. ft)
Main floor: 909 sq. ft (Excluded areas 9 sq. ft)
Upper floor: 0 sq. ft (Excluded areas 951 sq. ft)

Sizes And Dimensions Are Approximate. Actual May Vary.



Total GLA: 909 sq. ft | Total: 2881 sq. ft
Floor 1 - Below grade: (Excluded areas 1012 sq. ft)
Main floor: 909 sq. ft (Excluded areas 9 sq. ft)
Upper floor: 0 sq. ft (Excluded areas 951 sq. ft)

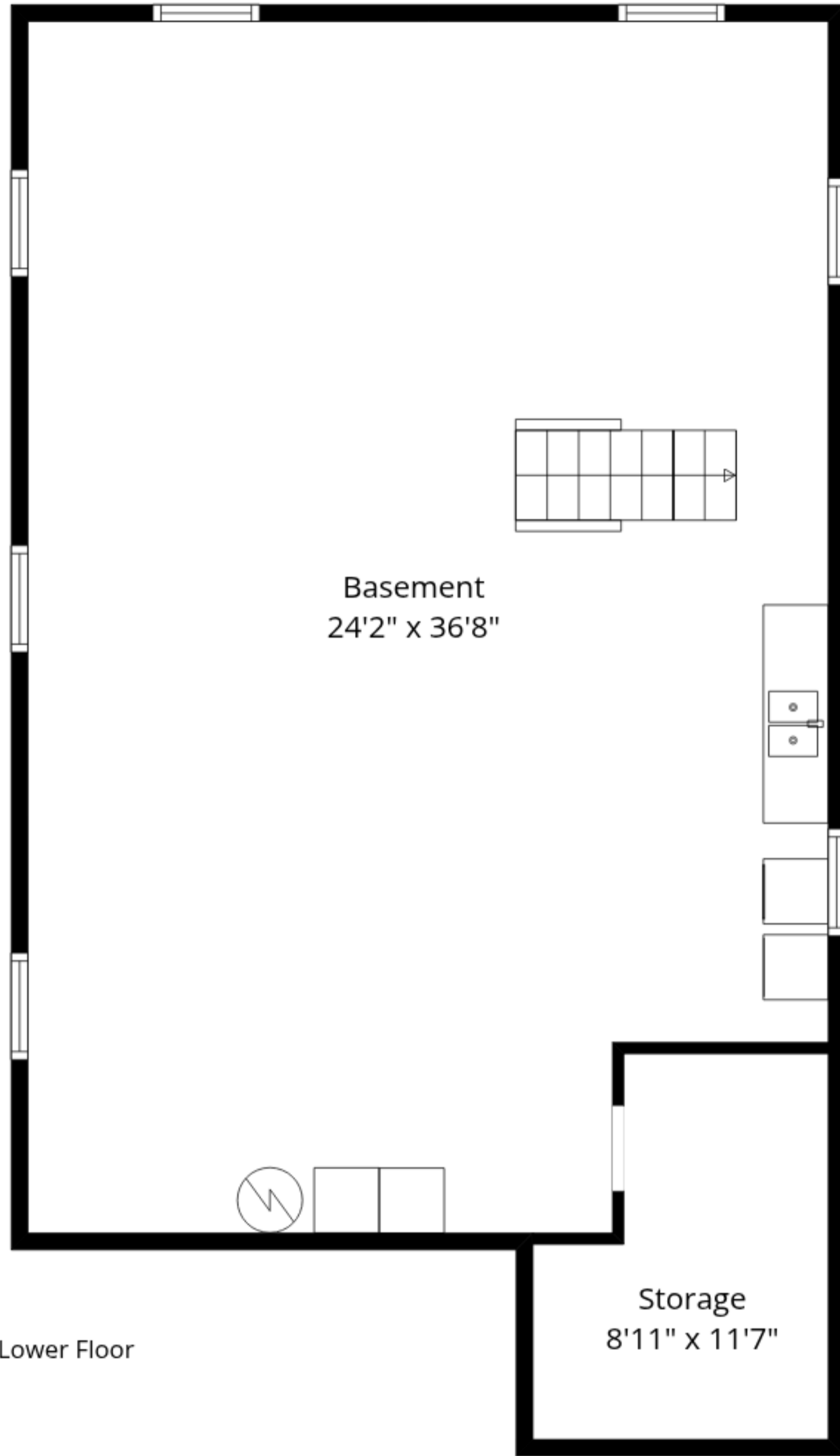
Sizes And Dimensions Are Approximate. Actual May Vary.



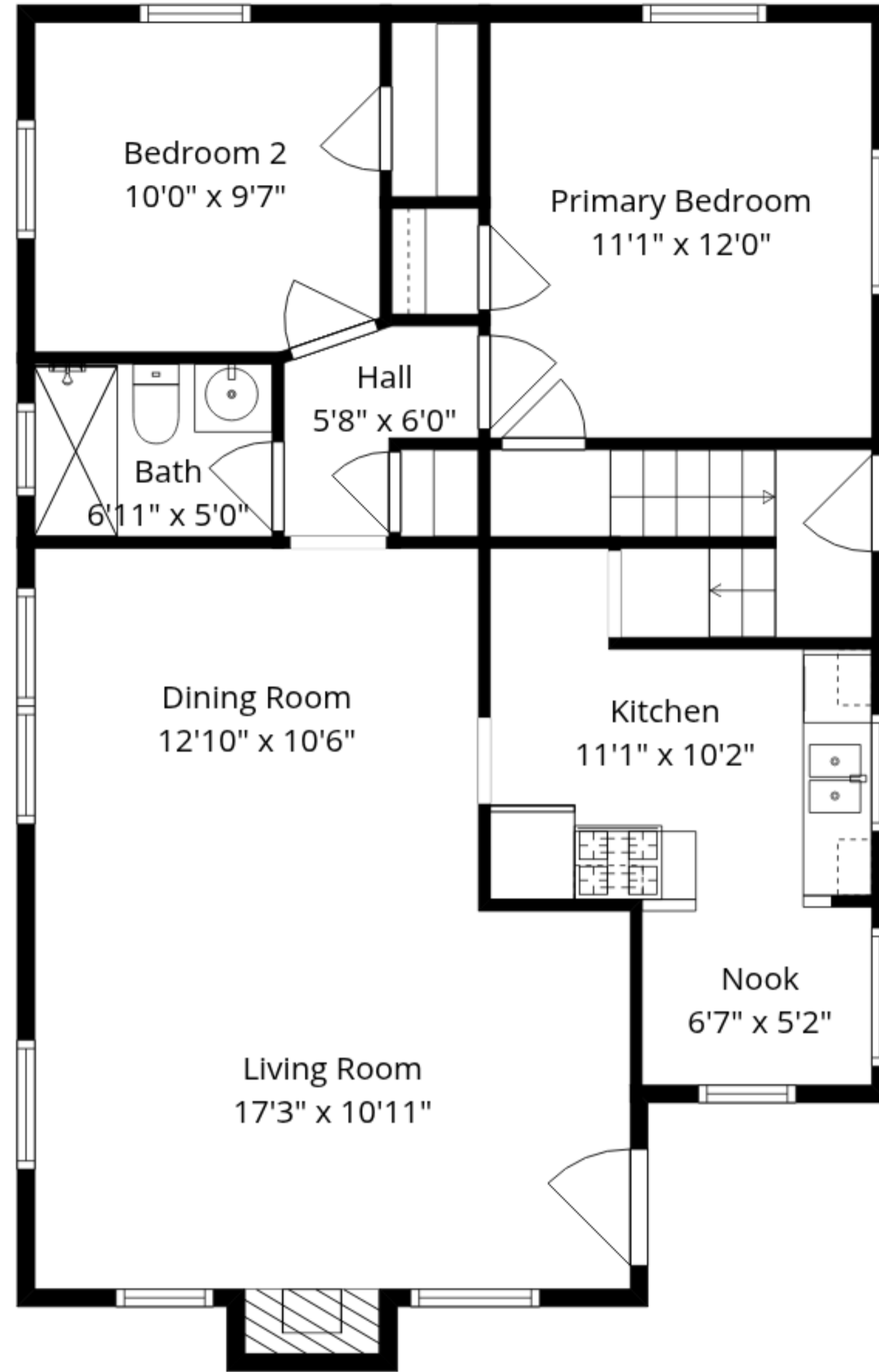
Attic
24'3" x 36'8"

Total GLA: 909 sq. ft | Total: 2881 sq. ft
Floor 1 - Below grade: (Excluded areas 1012 sq. ft)
Main floor: 909 sq. ft (Excluded areas 9 sq. ft)
Upper floor: 0 sq. ft (Excluded areas 951 sq. ft)

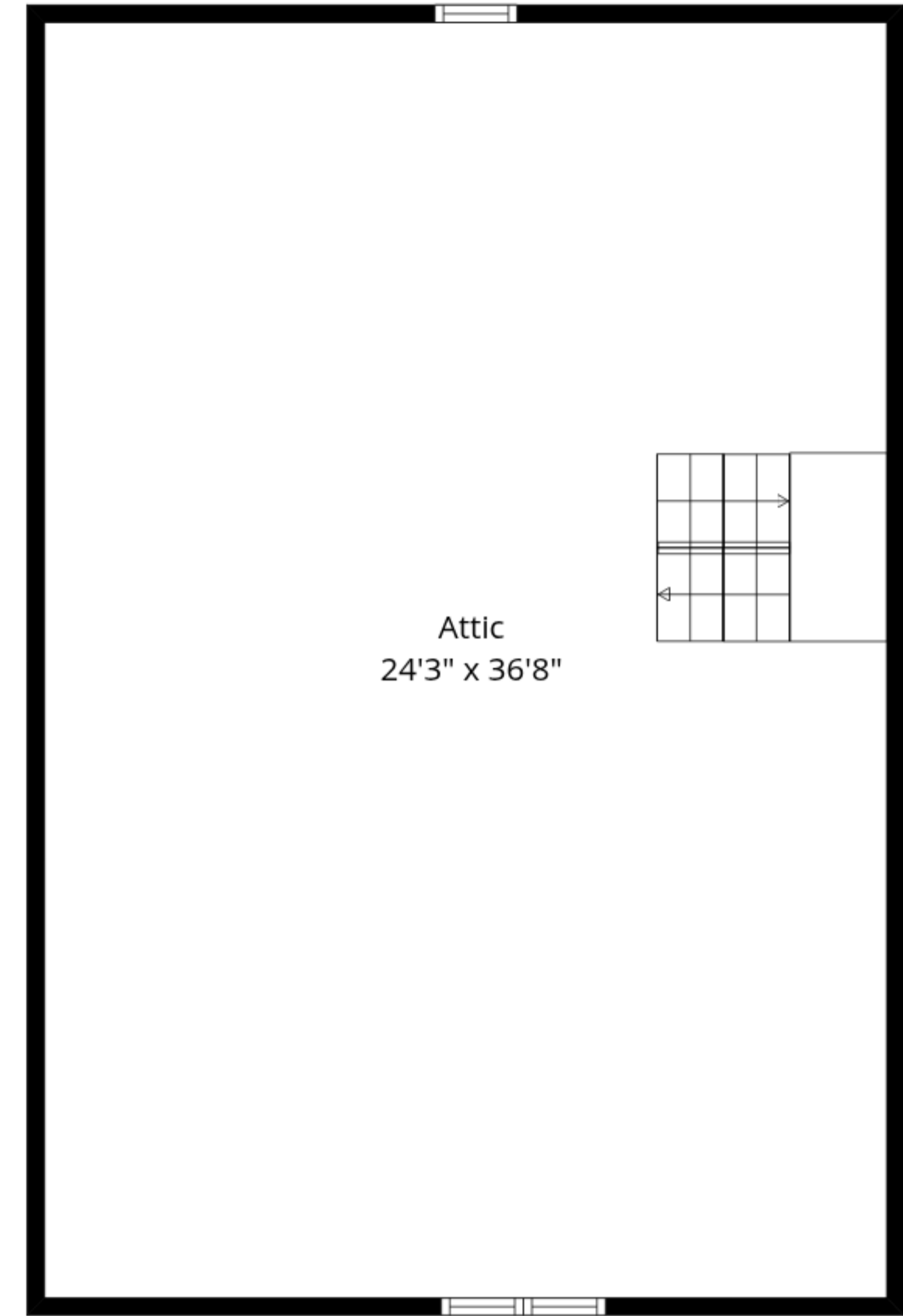
Sizes And Dimensions Are Approximate. Actual May Vary.



Lower Floor



Main Floor



Upper Floor

Total GLA: 909 sq. ft | Total: 2881 sq. ft
 Floor 1 - Below grade: (Excluded areas 1012 sq. ft)
 Main floor: 909 sq. ft (Excluded areas 9 sq. ft)
 Upper floor: 0 sq. ft (Excluded areas 951 sq. ft)

Sizes And Dimensions Are Approximate. Actual May Vary.