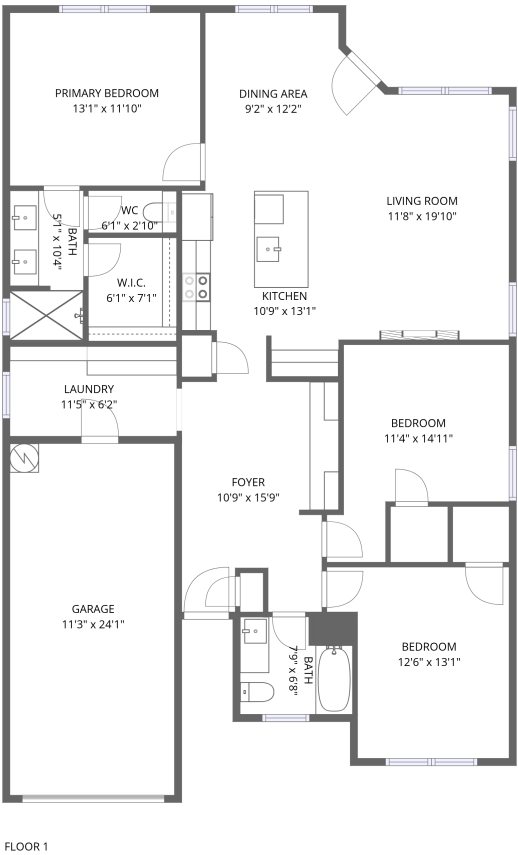


Home report

921 Thicket Trail, Granbury, Hood County, Texas, United States, 76048




Total Area: 1363 sq. ft

Floor 1: 1363 sq. ft

Excluded: Garage 272 sq. ft, Walls: 109 sq. ft

Property summary

 1 Floors

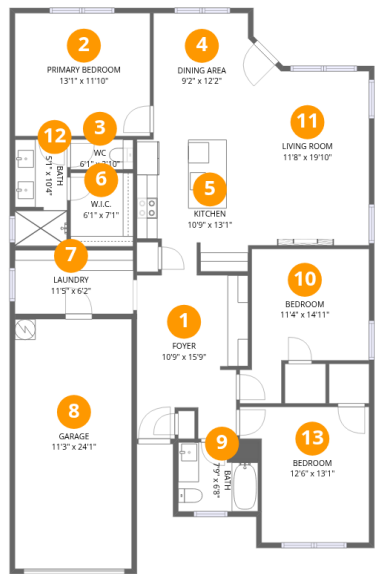
 3 Bedrooms

 2 Bathrooms

 1 Garages

Home report

921 Thicket Trail, Granbury, Hood County, Texas, United States, 76048



Room dimensions

Floor 1 Total:1363sqft Excluded: 272sqft

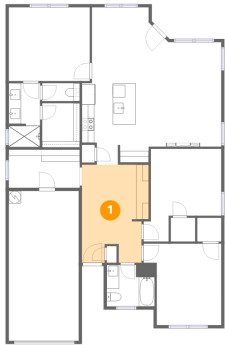
#		Max Dimensions	sqft	Included
1	Foyer	10'9" x 15'9"	154 sq. ft	Yes
2	Primary Bedroom	13'1" x 11'10"	155 sq. ft	Yes
3	WC	6'1" x 2'10"	18 sq. ft	Yes
4	Dining Area	9'2" x 12'2"	112 sq. ft	Yes
5	Kitchen	10'9" x 13'1"	130 sq. ft	Yes
6	W.I.C.	6'1" x 7'1"	43 sq. ft	Yes
7	Laundry	11'5" x 6'2"	71 sq. ft	Yes
8	Garage	11'3" x 24'1"	272 sq. ft	No
9	Bath	7'9" x 6'8"	46 sq. ft	Yes
10	Bedroom	11'4" x 14'11"	138 sq. ft	Yes
11	Living Room	11'8" x 19'10"	201 sq. ft	Yes

Home report

921 Thicket Trail, Granbury, Hood County, Texas, United States, 76048

#		Max Dimensions	sqft	Included
12	Bath	5'1" x 10'4"	51 sq. ft	Yes
13	Bedroom	12'6" x 13'1"	143 sq. ft	Yes

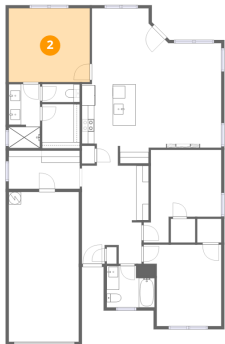
1 Floor 1 - Foyer



Max Dimensions: 10'9" x 15'9"
Calculated Area: 154 sq. ft
Included: Yes

Heated: Yes
Finished: Yes
Enclosed: Yes
Contiguous: Yes
Permitted: Yes
Wet space: No
Addition: No
Conversion: No

2 Floor 1 - Primary Bedroom



Max Dimensions: 13'1" x 11'10"
Calculated Area: 155 sq. ft
Included: Yes

Heated: Yes
Finished: Yes
Enclosed: Yes
Contiguous: Yes
Permitted: Yes
Wet space: No
Addition: No
Conversion: No

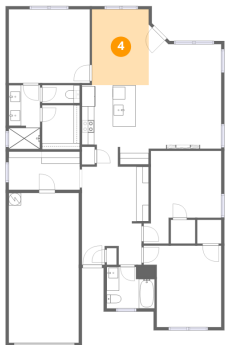
3 Floor 1 - WC



Max Dimensions: 6'1" x 2'10"
Calculated Area: 18 sq. ft
Included: Yes

Heated: Yes
Finished: Yes
Enclosed: Yes
Contiguous: Yes
Permitted: Yes
Wet space: Yes
Addition: No
Conversion: No

4 Floor 1 - Dining Area



Max Dimensions: 9'2" x 12'2"
Calculated Area: 112 sq. ft
Included: Yes

Heated: Yes
Finished: Yes
Enclosed: Yes
Contiguous: Yes
Permitted: Yes
Wet space: No
Addition: No
Conversion: No

5 Floor 1 - Kitchen

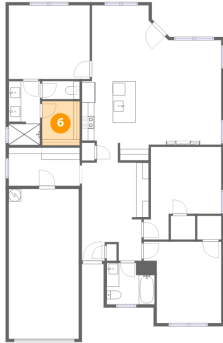


Max Dimensions: 10'9" x 13'1"
Calculated Area: 130 sq. ft
Included: Yes

Heated: Yes
Finished: Yes
Enclosed: Yes
Contiguous: Yes
Permitted: Yes
Wet space: No
Addition: No
Conversion: No

921 Thicket Trail, Granbury, Hood County, Texas, United States,
76048

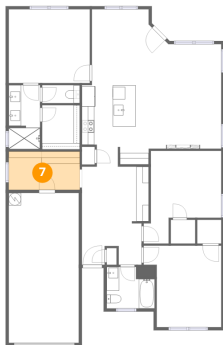
6 Floor 1 - W.I.C.



Max Dimensions: 6'1" x 7'1"
Calculated Area: 43 sq. ft
Included: Yes

Heated: Yes
Finished: Yes
Enclosed: Yes
Contiguous: Yes
Permitted: Yes
Wet space: No
Addition: No
Conversion: No

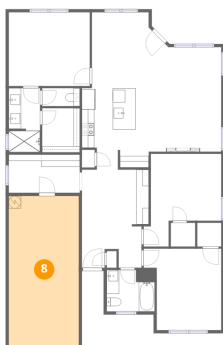
7 Floor 1 - Laundry



Max Dimensions: 11'5" x 6'2"
Calculated Area: 71 sq. ft
Included: Yes

Heated: Yes
Finished: Yes
Enclosed: Yes
Contiguous: Yes
Permitted: Yes
Wet space: No
Addition: No
Conversion: No

8 Floor 1 - Garage



Max Dimensions: 11'3" x 24'1"
Calculated Area: 272 sq. ft
Included: No

Heated: No
Finished: No
Enclosed: Yes
Contiguous: Yes
Permitted: Yes
Wet space: No
Addition: No
Conversion: No

9 Floor 1 - Bath



Max Dimensions: 7'9" x 6'8"
Calculated Area: 46 sq. ft
Included: Yes

Heated: Yes
Finished: Yes
Enclosed: Yes
Contiguous: Yes
Permitted: Yes
Wet space: Yes
Addition: No
Conversion: No

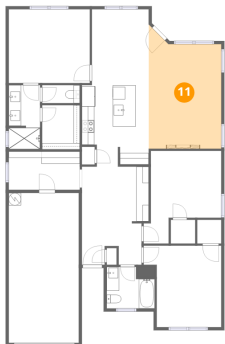
10 Floor 1 - Bedroom



Max Dimensions: 11'4" x 14'11"
Calculated Area: 138 sq. ft
Included: Yes

Heated: Yes
Finished: Yes
Enclosed: Yes
Contiguous: Yes
Permitted: Yes
Wet space: No
Addition: No
Conversion: No

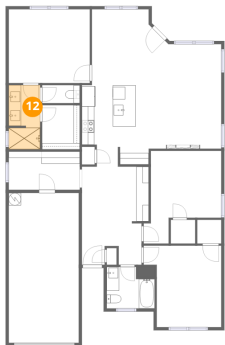
11 Floor 1 - Living Room



Max Dimensions: 11'8" x 19'10"
Calculated Area: 201 sq. ft
Included: Yes

Heated: Yes
Finished: Yes
Enclosed: Yes
Contiguous: Yes
Permitted: Yes
Wet space: No
Addition: No
Conversion: No

12 Floor 1 - Bath



Max Dimensions: 5'1" x 10'4"
Calculated Area: 51 sq. ft
Included: Yes

Heated: Yes
Finished: Yes
Enclosed: Yes
Contiguous: Yes
Permitted: Yes
Wet space: Yes
Addition: No
Conversion: No

13 Floor 1 - Bedroom



Max Dimensions: 12'6" x 13'1"
Calculated Area: 143 sq. ft
Included: Yes

Heated: Yes
Finished: Yes
Enclosed: Yes
Contiguous: Yes
Permitted: Yes
Wet space: No
Addition: No
Conversion: No