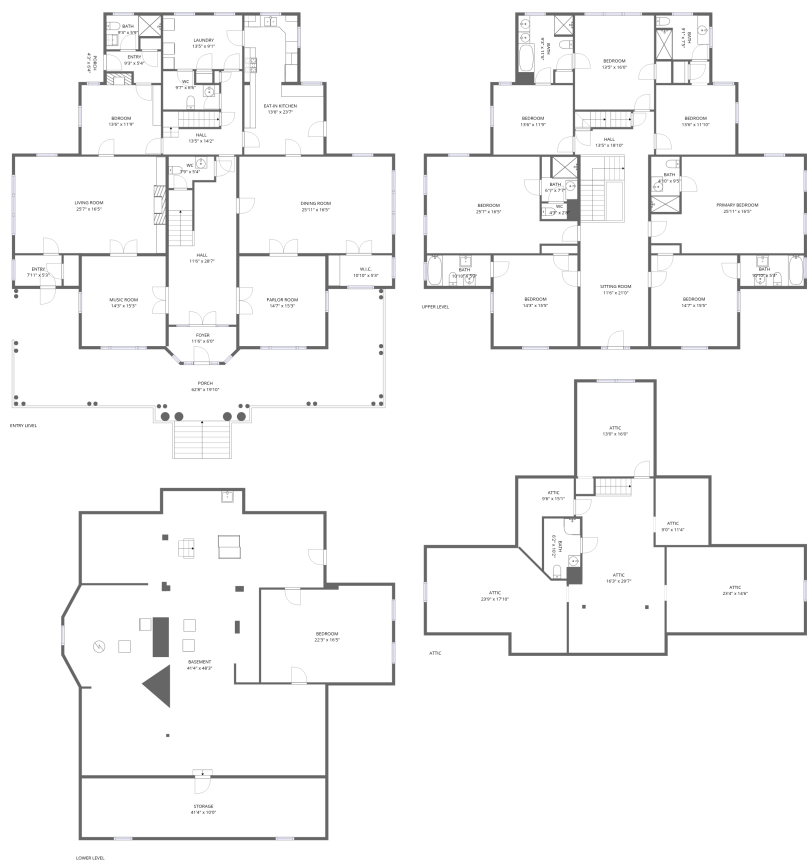


Home report

1100 McCormick Boulevard, Clifton Forge, Alleghany County, Virginia, United States, 24422, Main House



Total Area: 6907 sq. ft

Floor 1: 371 sq. ft, Floor 2: 2740 sq. ft, Floor 3: 2714 sq. ft, Floor 4: 1082 sq. ft
Excluded: Storage 434 sq. ft, Basement 1734 sq. ft, Porch 913 sq. ft, Bath 65 sq. ft, Low ceiling 449 sq. ft, Undefined 8 sq. ft, Walls: 466 sq. ft

Property summary

 **4** Floors

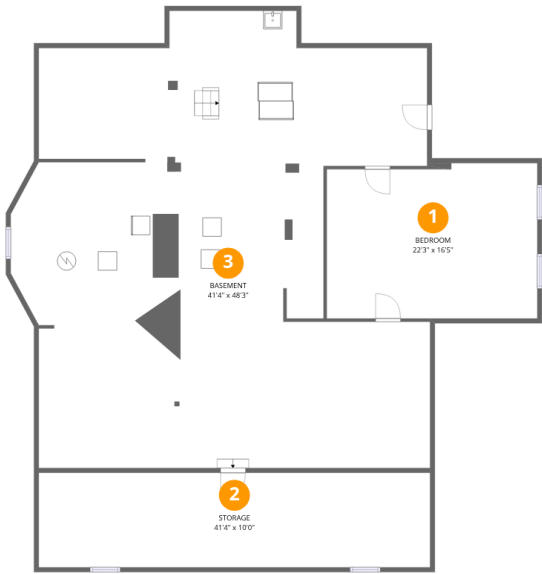
 **8** Bedrooms

 **8** Bathrooms

 **2** Half baths

Home report

1100 McCormick Boulevard, Clifton Forge, Alleghany County,
Virginia, United States, 24422, Main House



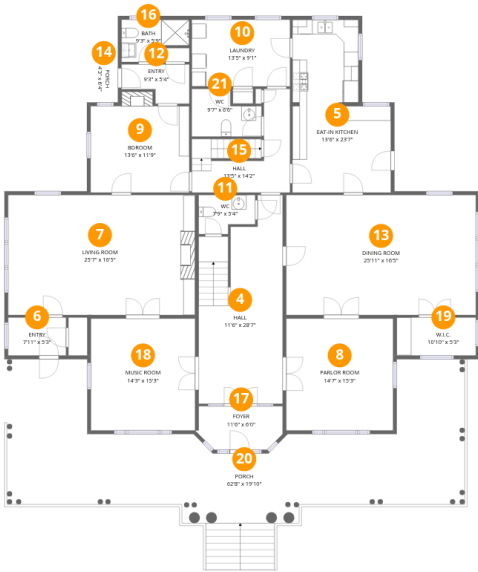
Room dimensions

Floor 1 Total:371sqft Excluded: 2168sqft

#		Max Dimensions	sqft	Included
1	Bedroom	22'3" x 16'5"	357 sq. ft	Yes
2	Storage	41'4" x 10'0"	413 sq. ft	No
3	Basement	41'4" x 48'3"	1727 sq. ft	No

Home report

1100 McCormick Boulevard, Clifton Forge, Alleghany County,
Virginia, United States, 24422, Main House



Room dimensions

Floor 2 Total:2740sqft Excluded: 913sqft

#		Max Dimensions	sqft	Included
4	Hall	11'6" x 28'7"	285 sq. ft	Yes
5	Eat-in Kitchen	13'6" x 23'7"	265 sq. ft	Yes
6	Entry	7'11" x 5'3"	41 sq. ft	Yes
7	Living Room	25'7" x 16'5"	420 sq. ft	Yes
8	Parlor Room	14'7" x 15'3"	224 sq. ft	Yes
9	Bdroom	13'6" x 11'9"	168 sq. ft	Yes
10	Laundry	13'5" x 9'1"	123 sq. ft	Yes
11	WC	7'9" x 5'4"	37 sq. ft	Yes
12	Entry	9'3" x 5'4"	41 sq. ft	Yes
13	Dining Room	25'11" x 16'5"	426 sq. ft	Yes
14	Porch	4'3" x 6'4"	27 sq. ft	No

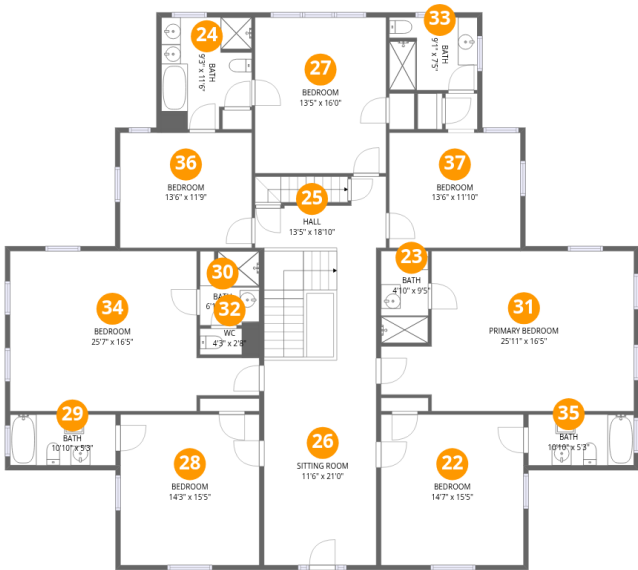
Home report

**1100 McCormick Boulevard, Clifton Forge, Alleghany County,
Virginia, United States, 24422, Main House**

#		Max Dimensions	sqft	Included
15	Hall	13'5" x 14'2"	120 sq. ft	Yes
16	Bath	9'3" x 5'9"	45 sq. ft	Yes
17	Foyer	11'6" x 6'0"	64 sq. ft	Yes
18	Music Room	14'3" x 15'3"	218 sq. ft	Yes
19	W.I.C.	10'10" x 5'3"	57 sq. ft	Yes
20	Porch	62'8" x 19'10"	886 sq. ft	No
21	WC	9'7" x 6'6"	52 sq. ft	Yes

Home report

1100 McCormick Boulevard, Clifton Forge, Alleghany County,
Virginia, United States, 24422, Main House



Room dimensions

Floor 3 Total:2714sqft Excluded: 0sqft

#		Max Dimensions	sqft	Included
22	Bedroom	14'7" x 15'5"	226 sq. ft	Yes
23	Bath	4'10" x 9'5"	46 sq. ft	Yes
24	Bath	9'3" x 11'6"	93 sq. ft	Yes
25	Hall	13'5" x 18'10"	201 sq. ft	Yes
26	Sitting Room	11'6" x 21'0"	242 sq. ft	Yes
27	Bedroom	13'5" x 16'0"	215 sq. ft	Yes
28	Bedroom	14'3" x 15'5"	220 sq. ft	Yes
29	Bath	10'10" x 5'3"	56 sq. ft	Yes
30	Bath	6'1" x 7'7"	45 sq. ft	Yes
31	Primary Bedroom	25'11" x 16'5"	367 sq. ft	Yes
32	WC	4'3" x 2'8"	16 sq. ft	Yes

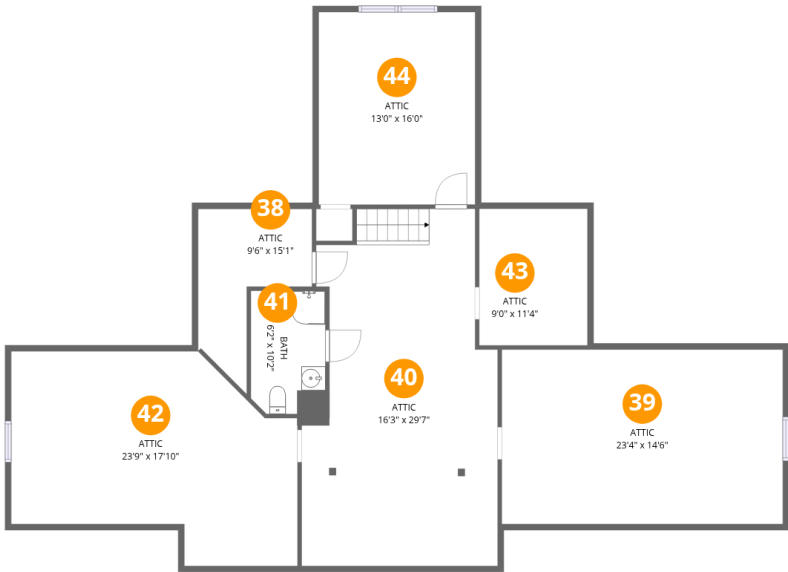
Home report

**1100 McCormick Boulevard, Clifton Forge, Alleghany County,
Virginia, United States, 24422, Main House**

#		Max Dimensions	sqft	Included
33	Bath	9'1" x 7'5"	67 sq. ft	Yes
34	Bedroom	25'7" x 16'5"	339 sq. ft	Yes
35	Bath	10'10" x 5'3"	57 sq. ft	Yes
36	Bedroom	13'6" x 11'9"	160 sq. ft	Yes
37	Bedroom	13'6" x 11'10"	159 sq. ft	Yes

Home report

1100 McCormick Boulevard, Clifton Forge, Alleghany County,
Virginia, United States, 24422, Main House



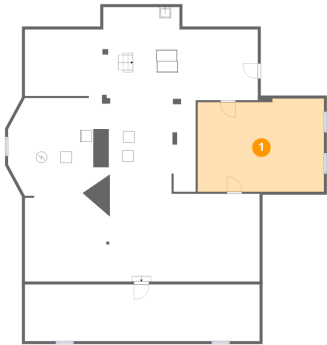
Room dimensions

Floor 4 Total:1082sqft Excluded: 522sqft

#		Max Dimensions	sqft	Included
38	Attic	9'6" x 15'1"	35 sq. ft	Yes
39	Attic	23'4" x 14'6"	167 sq. ft	Yes
40	Attic	16'3" x 29'7"	417 sq. ft	Yes
41	Bath	6'2" x 10'2"	62 sq. ft	No
42	Attic	23'9" x 17'10"	171 sq. ft	Yes
43	Attic	9'0" x 11'4"	53 sq. ft	Yes
44	Attic	13'0" x 16'0"	208 sq. ft	Yes

1100 McCormick Boulevard, Clifton Forge, Alleghany County,
Virginia, United States, 24422, Main House

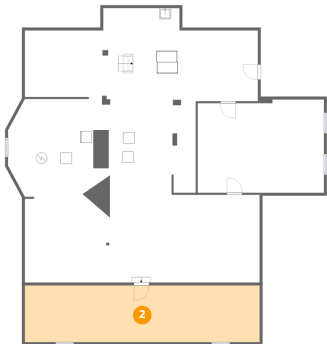
1 Floor 1 - Bedroom



Max Dimensions: 22'3" x 16'5"
Calculated Area: 357 sq. ft
Included: No

Heated: Yes
Finished: Yes
Enclosed: Yes
Contiguous: No
Permitted: Yes
Wet space: No
Addition: No
Conversion: No

2 Floor 1 - Storage

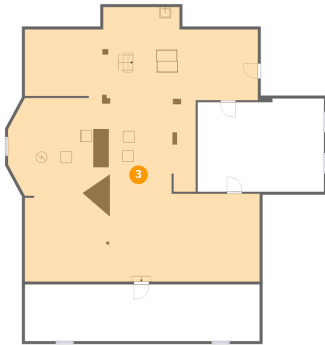


Max Dimensions: 41'4" x 10'0"
Calculated Area: 413 sq. ft
Included: No

Heated: No
Finished: No
Enclosed: No
Contiguous: Yes
Permitted: Yes
Wet space: No
Addition: No
Conversion: No

1100 McCormick Boulevard, Clifton Forge, Alleghany County,
Virginia, United States, 24422, Main House

3 Floor 1 - Basement



Max Dimensions: 41'4" x 48'3"
Calculated Area: 1727 sq. ft
Included: No

Heated: Yes
Finished: No
Enclosed: Yes
Contiguous: Yes
Permitted: Yes
Wet space: No
Addition: No
Conversion: No

4 Floor 2 - Hall



Max Dimensions: 11'6" x 28'7"
Calculated Area: 285 sq. ft
Included: Yes

Heated: Yes
Finished: Yes
Enclosed: Yes
Contiguous: Yes
Permitted: Yes
Wet space: No
Addition: No
Conversion: No

5 Floor 2 - Eat-in Kitchen



Max Dimensions: 13'6" x 23'7"
Calculated Area: 265 sq. ft
Included: Yes

Heated: Yes
Finished: Yes
Enclosed: Yes
Contiguous: Yes
Permitted: Yes
Wet space: No
Addition: No
Conversion: No

1100 McCormick Boulevard, Clifton Forge, Alleghany County,
Virginia, United States, 24422, Main House

6 Floor 2 - Entry



Max Dimensions: 7'11" x 5'3"
Calculated Area: 41 sq. ft
Included: Yes

Heated: Yes
Finished: Yes
Enclosed: Yes
Contiguous: Yes
Permitted: Yes
Wet space: No
Addition: No
Conversion: No

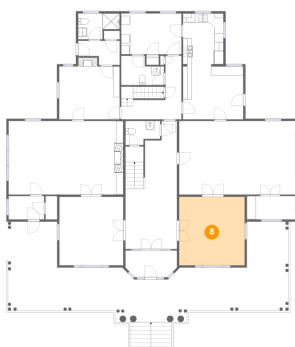
7 Floor 2 - Living Room



Max Dimensions: 25'7" x 16'5"
Calculated Area: 420 sq. ft
Included: Yes

Heated: Yes
Finished: Yes
Enclosed: Yes
Contiguous: Yes
Permitted: Yes
Wet space: No
Addition: No
Conversion: No

8 Floor 2 - Parlor Room



Max Dimensions: 14'7" x 15'3"
Calculated Area: 224 sq. ft
Included: Yes

Heated: Yes
Finished: Yes
Enclosed: Yes
Contiguous: Yes
Permitted: Yes
Wet space: No
Addition: No
Conversion: No

1100 McCormick Boulevard, Clifton Forge, Alleghany County,
Virginia, United States, 24422, Main House

9 Floor 2 - Bdroom



Max Dimensions: 13'6" x 11'9"
Calculated Area: 168 sq. ft
Included: Yes

Heated: Yes
Finished: Yes
Enclosed: Yes
Contiguous: Yes
Permitted: Yes
Wet space: No
Addition: No
Conversion: No

10 Floor 2 - Laundry



Max Dimensions: 13'5" x 9'1"
Calculated Area: 123 sq. ft
Included: Yes

Heated: Yes
Finished: Yes
Enclosed: Yes
Contiguous: Yes
Permitted: Yes
Wet space: No
Addition: No
Conversion: No

11 Floor 2 - WC



Max Dimensions: 7'9" x 5'4"
Calculated Area: 37 sq. ft
Included: Yes

Heated: Yes
Finished: Yes
Enclosed: Yes
Contiguous: Yes
Permitted: Yes
Wet space: Yes
Addition: No
Conversion: No

1100 McCormick Boulevard, Clifton Forge, Alleghany County,
Virginia, United States, 24422, Main House

12 Floor 2 - Entry



Max Dimensions: 9'3" x 5'4"
Calculated Area: 41 sq. ft
Included: Yes

Heated: Yes
Finished: Yes
Enclosed: Yes
Contiguous: Yes
Permitted: Yes
Wet space: No
Addition: No
Conversion: No

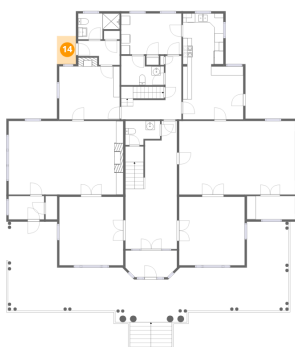
13 Floor 2 - Dining Room



Max Dimensions: 25'11" x 16'5"
Calculated Area: 426 sq. ft
Included: Yes

Heated: Yes
Finished: Yes
Enclosed: Yes
Contiguous: Yes
Permitted: Yes
Wet space: No
Addition: No
Conversion: No

14 Floor 2 - Porch



Max Dimensions: 4'3" x 6'4"
Calculated Area: 27 sq. ft
Included: No

Heated: No
Finished: Yes
Enclosed: No
Contiguous: Yes
Permitted: Yes
Wet space: No
Addition: No
Conversion: No

1100 McCormick Boulevard, Clifton Forge, Alleghany County,
Virginia, United States, 24422, Main House

15 Floor 2 - Hall



Max Dimensions: 13'5" x 14'2"
Calculated Area: 120 sq. ft
Included: Yes

Heated: Yes
Finished: Yes
Enclosed: Yes
Contiguous: Yes
Permitted: Yes
Wet space: No
Addition: No
Conversion: No

16 Floor 2 - Bath



Max Dimensions: 9'3" x 5'9"
Calculated Area: 45 sq. ft
Included: Yes

Heated: Yes
Finished: Yes
Enclosed: Yes
Contiguous: Yes
Permitted: Yes
Wet space: Yes
Addition: No
Conversion: No

17 Floor 2 - Foyer



Max Dimensions: 11'6" x 6'0"
Calculated Area: 64 sq. ft
Included: Yes

Heated: Yes
Finished: Yes
Enclosed: Yes
Contiguous: Yes
Permitted: Yes
Wet space: No
Addition: No
Conversion: No

1100 McCormick Boulevard, Clifton Forge, Alleghany County,
Virginia, United States, 24422, Main House

18 Floor 2 - Music Room



Max Dimensions: 14'3" x 15'3"
Calculated Area: 218 sq. ft
Included: Yes

Heated: Yes
Finished: Yes
Enclosed: Yes
Contiguous: Yes
Permitted: Yes
Wet space: No
Addition: No
Conversion: No

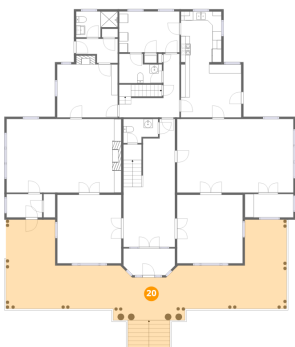
19 Floor 2 - W.I.C.



Max Dimensions: 10'10" x 5'3"
Calculated Area: 57 sq. ft
Included: Yes

Heated: Yes
Finished: Yes
Enclosed: Yes
Contiguous: Yes
Permitted: Yes
Wet space: No
Addition: No
Conversion: No

20 Floor 2 - Porch



Max Dimensions: 62'8" x 19'10"
Calculated Area: 886 sq. ft
Included: No

Heated: No
Finished: Yes
Enclosed: No
Contiguous: Yes
Permitted: Yes
Wet space: No
Addition: No
Conversion: No

1100 McCormick Boulevard, Clifton Forge, Alleghany County,
Virginia, United States, 24422, Main House

21 Floor 2 - WC



Max Dimensions: 9'7" x 6'6"
Calculated Area: 52 sq. ft
Included: Yes

Heated: Yes
Finished: Yes
Enclosed: Yes
Contiguous: Yes
Permitted: Yes
Wet space: Yes
Addition: No
Conversion: No

22 Floor 3 - Bedroom



Max Dimensions: 14'7" x 15'5"
Calculated Area: 226 sq. ft
Included: Yes

Heated: Yes
Finished: Yes
Enclosed: Yes
Contiguous: Yes
Permitted: Yes
Wet space: No
Addition: No
Conversion: No

23 Floor 3 - Bath



Max Dimensions: 4'10" x 9'5"
Calculated Area: 46 sq. ft
Included: Yes

Heated: Yes
Finished: Yes
Enclosed: Yes
Contiguous: Yes
Permitted: Yes
Wet space: Yes
Addition: No
Conversion: No

1100 McCormick Boulevard, Clifton Forge, Alleghany County,
Virginia, United States, 24422, Main House

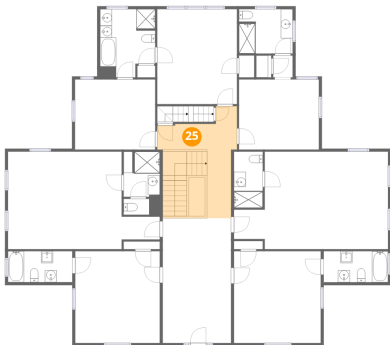
24 Floor 3 - Bath



Max Dimensions: 9'3" x 11'6"
Calculated Area: 93 sq. ft
Included: Yes

Heated: Yes
Finished: Yes
Enclosed: Yes
Contiguous: Yes
Permitted: Yes
Wet space: Yes
Addition: No
Conversion: No

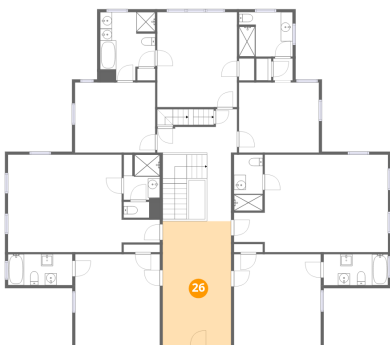
25 Floor 3 - Hall



Max Dimensions: 13'5" x 18'10"
Calculated Area: 201 sq. ft
Included: Yes

Heated: Yes
Finished: Yes
Enclosed: Yes
Contiguous: Yes
Permitted: Yes
Wet space: No
Addition: No
Conversion: No

26 Floor 3 - Sitting Room

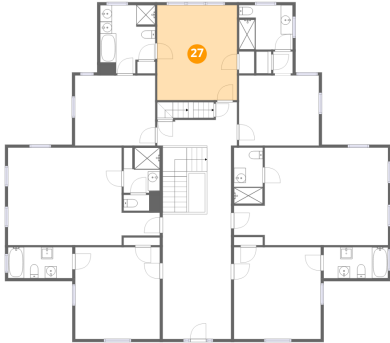


Max Dimensions: 11'6" x 21'0"
Calculated Area: 242 sq. ft
Included: Yes

Heated: Yes
Finished: Yes
Enclosed: Yes
Contiguous: Yes
Permitted: Yes
Wet space: No
Addition: No
Conversion: No

1100 McCormick Boulevard, Clifton Forge, Alleghany County,
Virginia, United States, 24422, Main House

27 Floor 3 - Bedroom



Max Dimensions: 13'5" x 16'0"
Calculated Area: 215 sq. ft
Included: Yes

Heated: Yes
Finished: Yes
Enclosed: Yes
Contiguous: Yes
Permitted: Yes
Wet space: No
Addition: No
Conversion: No

28 Floor 3 - Bedroom



Max Dimensions: 14'3" x 15'5"
Calculated Area: 220 sq. ft
Included: Yes

Heated: Yes
Finished: Yes
Enclosed: Yes
Contiguous: Yes
Permitted: Yes
Wet space: No
Addition: No
Conversion: No

29 Floor 3 - Bath



Max Dimensions: 10'10" x 5'3"
Calculated Area: 56 sq. ft
Included: Yes

Heated: Yes
Finished: Yes
Enclosed: Yes
Contiguous: Yes
Permitted: Yes
Wet space: Yes
Addition: No
Conversion: No

1100 McCormick Boulevard, Clifton Forge, Alleghany County,
Virginia, United States, 24422, Main House

30 Floor 3 - Bath



Max Dimensions: 6'1" x 7'7"
Calculated Area: 45 sq. ft
Included: Yes

Heated: Yes
Finished: Yes
Enclosed: Yes
Contiguous: Yes
Permitted: Yes
Wet space: Yes
Addition: No
Conversion: No

31 Floor 3 - Primary Bedroom



Max Dimensions: 25'11" x 16'5"
Calculated Area: 367 sq. ft
Included: Yes

Heated: Yes
Finished: Yes
Enclosed: Yes
Contiguous: Yes
Permitted: Yes
Wet space: No
Addition: No
Conversion: No

32 Floor 3 - WC



Max Dimensions: 4'3" x 2'8"
Calculated Area: 16 sq. ft
Included: Yes

Heated: Yes
Finished: Yes
Enclosed: Yes
Contiguous: Yes
Permitted: Yes
Wet space: Yes
Addition: No
Conversion: No

1100 McCormick Boulevard, Clifton Forge, Alleghany County,
Virginia, United States, 24422, Main House

33 Floor 3 - Bath



Max Dimensions: 9'1" x 7'5"
Calculated Area: 67 sq. ft
Included: Yes

Heated: Yes
Finished: Yes
Enclosed: Yes
Contiguous: Yes
Permitted: Yes
Wet space: Yes
Addition: No
Conversion: No

34 Floor 3 - Bedroom



Max Dimensions: 25'7" x 16'5"
Calculated Area: 339 sq. ft
Included: Yes

Heated: Yes
Finished: Yes
Enclosed: Yes
Contiguous: Yes
Permitted: Yes
Wet space: No
Addition: No
Conversion: No

35 Floor 3 - Bath



Max Dimensions: 10'10" x 5'3"
Calculated Area: 57 sq. ft
Included: Yes

Heated: Yes
Finished: Yes
Enclosed: Yes
Contiguous: Yes
Permitted: Yes
Wet space: Yes
Addition: No
Conversion: No

1100 McCormick Boulevard, Clifton Forge, Alleghany County,
Virginia, United States, 24422, Main House

36 Floor 3 - Bedroom



Max Dimensions: 13'6" x 11'9"
Calculated Area: 160 sq. ft
Included: Yes

Heated: Yes
Finished: Yes
Enclosed: Yes
Contiguous: Yes
Permitted: Yes
Wet space: No
Addition: No
Conversion: No

37 Floor 3 - Bedroom



Max Dimensions: 13'6" x 11'10"
Calculated Area: 159 sq. ft
Included: Yes

Heated: Yes
Finished: Yes
Enclosed: Yes
Contiguous: Yes
Permitted: Yes
Wet space: No
Addition: No
Conversion: No

38 Floor 4 - Attic

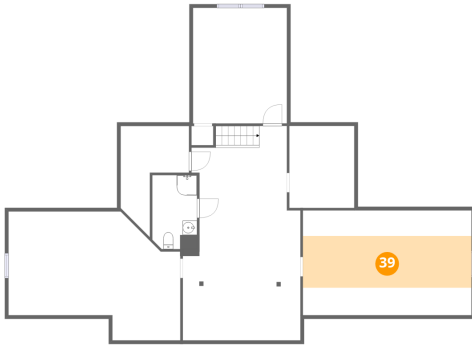


Max Dimensions: 9'6" x 15'1"
Calculated Area: 35 sq. ft
Included: Yes

Heated: Yes
Finished: Yes
Enclosed: Yes
Contiguous: Yes
Permitted: Yes
Wet space: No
Addition: No
Conversion: No

1100 McCormick Boulevard, Clifton Forge, Alleghany County,
Virginia, United States, 24422, Main House

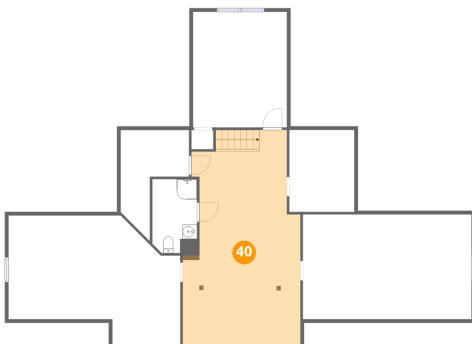
39 Floor 4 - Attic



Max Dimensions: 23'4" x 14'6"
Calculated Area: 167 sq. ft
Included: Yes

Heated: Yes
Finished: Yes
Enclosed: Yes
Contiguous: Yes
Permitted: Yes
Wet space: No
Addition: No
Conversion: No

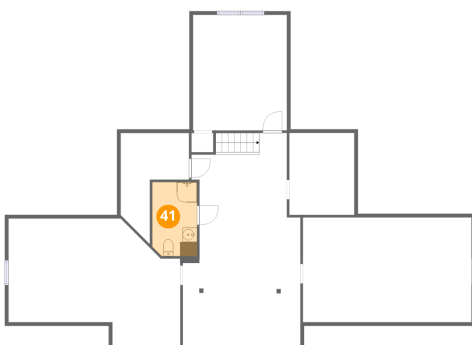
40 Floor 4 - Attic



Max Dimensions: 16'3" x 29'7"
Calculated Area: 417 sq. ft
Included: Yes

Heated: Yes
Finished: Yes
Enclosed: Yes
Contiguous: Yes
Permitted: Yes
Wet space: No
Addition: No
Conversion: No

41 Floor 4 - Bath

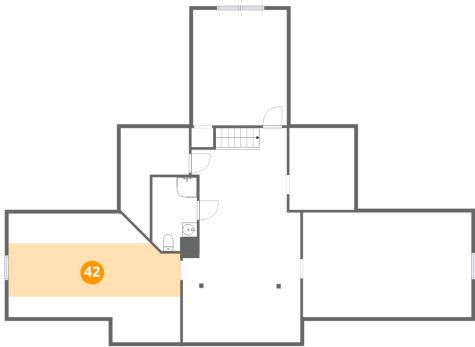


Max Dimensions: 6'2" x 10'2"
Calculated Area: 62 sq. ft
Included: No

Heated: Yes
Finished: No
Enclosed: Yes
Contiguous: Yes
Permitted: Yes
Wet space: Yes
Addition: No
Conversion: No

1100 McCormick Boulevard, Clifton Forge, Alleghany County,
Virginia, United States, 24422, Main House

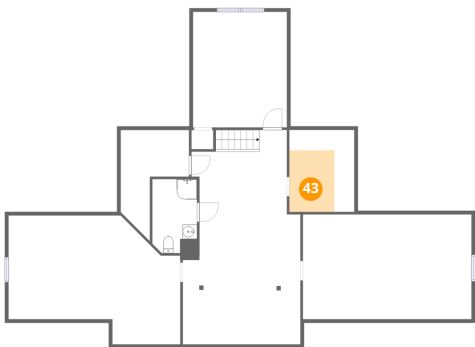
42 Floor 4 - Attic



Max Dimensions: 23'9" x 17'10"
Calculated Area: 171 sq. ft
Included: Yes

Heated: Yes
Finished: Yes
Enclosed: Yes
Contiguous: Yes
Permitted: Yes
Wet space: No
Addition: No
Conversion: No

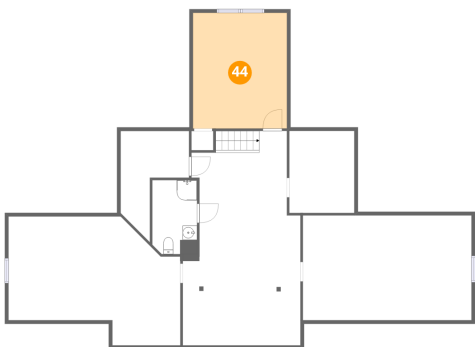
43 Floor 4 - Attic



Max Dimensions: 9'0" x 11'4"
Calculated Area: 53 sq. ft
Included: Yes

Heated: Yes
Finished: Yes
Enclosed: Yes
Contiguous: Yes
Permitted: Yes
Wet space: No
Addition: No
Conversion: No

44 Floor 4 - Attic



Max Dimensions: 13'0" x 16'0"
Calculated Area: 208 sq. ft
Included: Yes

Heated: Yes
Finished: Yes
Enclosed: Yes
Contiguous: Yes
Permitted: Yes
Wet space: No
Addition: No
Conversion: No