

Home data report

6051 S Clarkson St, Centennial, CO, US




Total Area: 2732 sq. ft

Basement: 1293 sq. ft, 1st Floor: 1439 sq. ft

Excluded: Garage 917 sq. ft, Patio 1375 sq. ft, Walls: 239 sq. ft

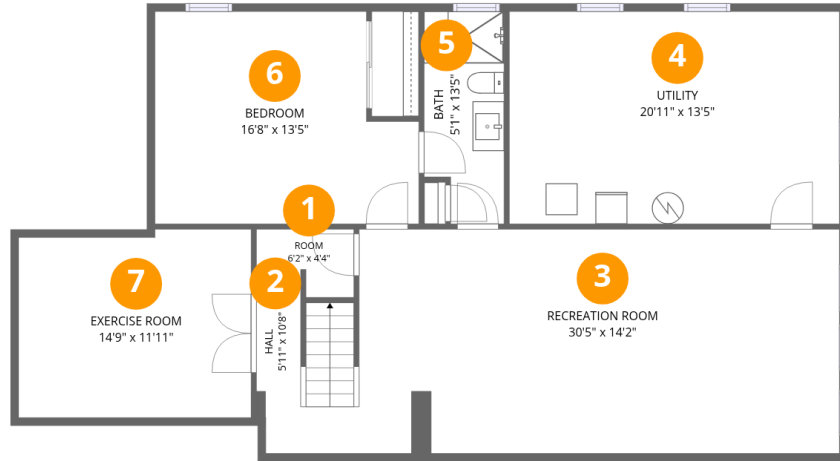
Property summary

 **2** Floors

 **3** Bedrooms

 **3** Bathrooms

 **2** Garages



Room dimensions

Floor 1 Below grade

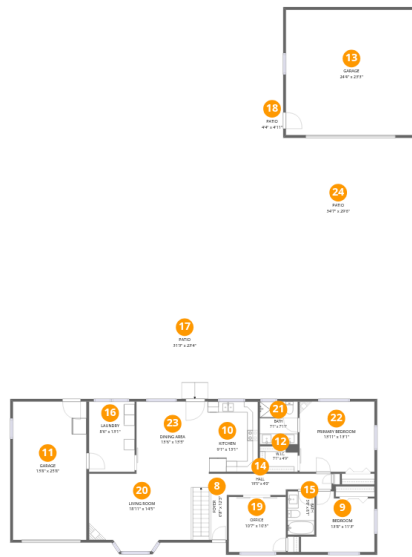
Total:1293sqft

Excluded: 0sqft

#		Dimensions	sqft	Counted as living area
1	Room	6'2" x 4'4"	23 sq. ft	Yes
2	Hall	5'11" x 10'8"	61 sq. ft	Yes
3	Recreation Room	30'5" x 14'2"	431 sq. ft	Yes
4	Utility	20'11" x 13'5"	280 sq. ft	Yes
5	Bath	5'1" x 13'5"	63 sq. ft	Yes
6	Bedroom	16'8" x 13'5"	201 sq. ft	Yes
7	Exercise Room	14'9" x 11'11"	171 sq. ft	Yes

Home data report

6051 S Clarkson St, Centennial, CO, US



Room dimensions

Floor 2

Total: 1439sqft

Excluded: 2292sqft

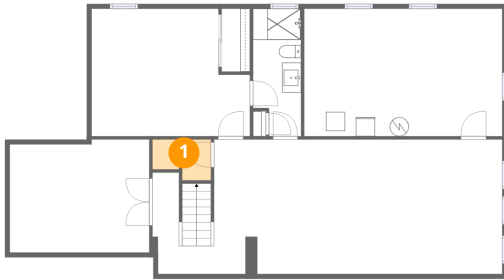
#		Dimensions	sqft	Counted as living area
8	Foyer	6'8" x 12'3"	82 sq. ft	Yes
9	Bedroom	13'8" x 11'3"	120 sq. ft	Yes
10	Kitchen	9'1" x 13'1"	119 sq. ft	Yes
11	Garage	13'8" x 25'8"	350 sq. ft	No
12	W.I.C.	7'1" x 4'9"	34 sq. ft	Yes
13	Garage	24'4" x 23'3"	567 sq. ft	No
14	Hall	19'5" x 4'0"	68 sq. ft	Yes
15	Bath	5'0" x 8'1"	40 sq. ft	Yes
16	Laundry	8'6" x 13'1"	111 sq. ft	Yes
17	Patio	31'3" x 23'4"	559 sq. ft	No
18	Patio	4'4" x 4'11"	22 sq. ft	No

Home data report

6051 S Clarkson St,Centennial,CO,US

#		Dimensions	sqft	Counted as living area
19	Office	10'7" x 10'3"	109 sq. ft	Yes
20	Living Room	18'11" x 14'5"	248 sq. ft	Yes
21	Bath	7'1" x 7'11"	56 sq. ft	Yes
22	Primary Bedroom	13'11" x 13'1"	182 sq. ft	Yes
23	Dining Area	13'6" x 13'5"	180 sq. ft	Yes
24	Patio	34'7" x 29'6"	794 sq. ft	No

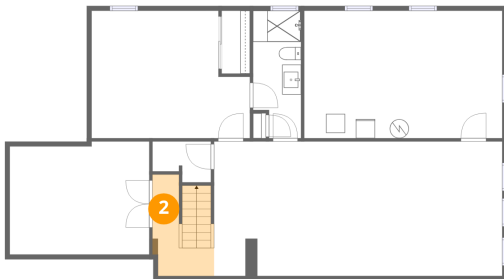
1 Floor 1 - Room



Dimensions: 6'2" x 4'4"
Area: 23 sq. ft
Counted as living area: Yes

Heated: Yes
Finished: Yes
Enclosed: Yes
Contiguous: Yes
Permitted: Yes
Wet space: No
Addition: No
Conversion: No

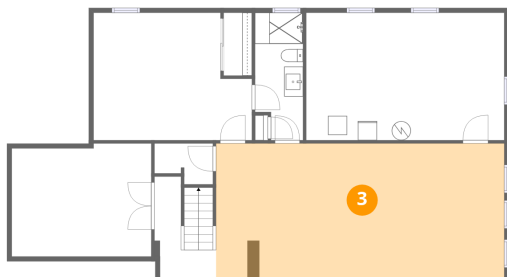
2 Floor 1 - Hall



Dimensions: 5'11" x 10'8"
Area: 61 sq. ft
Counted as living area: Yes

Heated: Yes
Finished: Yes
Enclosed: Yes
Contiguous: Yes
Permitted: Yes
Wet space: No
Addition: No
Conversion: No

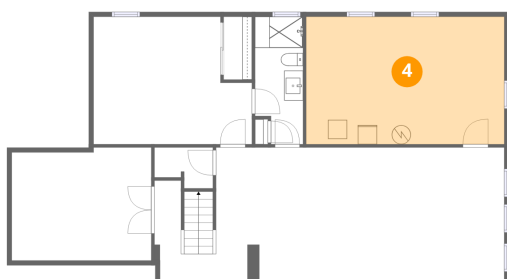
3 Floor 1 - Recreation Room



Dimensions: 30'5" x 14'2"
Area: 431 sq. ft
Counted as living area: Yes

Heated: Yes
Finished: Yes
Enclosed: Yes
Contiguous: Yes
Permitted: Yes
Wet space: No
Addition: No
Conversion: No

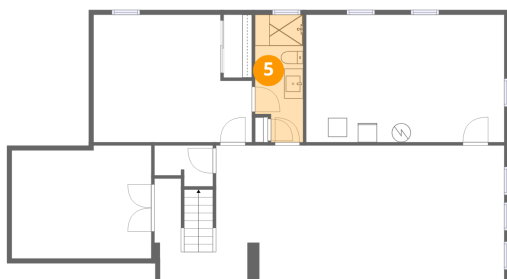
4 Floor 1 - Utility



Dimensions: 20'11" x 13'5"
Area: 280 sq. ft
Counted as living area: Yes

Heated: Yes
Finished: Yes
Enclosed: Yes
Contiguous: Yes
Permitted: Yes
Wet space: No
Addition: No
Conversion: No

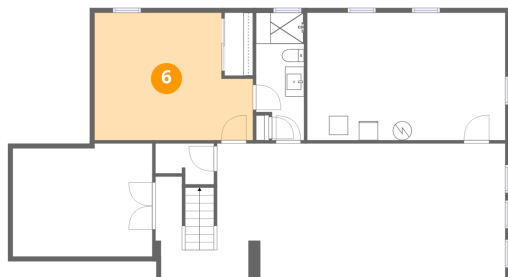
5 Floor 1 - Bath



Dimensions: 5'1" x 13'5"
Area: 63 sq. ft
Counted as living area: Yes

Heated: Yes
Finished: Yes
Enclosed: Yes
Contiguous: Yes
Permitted: Yes
Wet space: Yes
Addition: No
Conversion: No

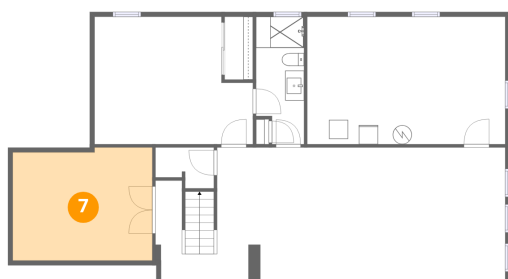
6 Floor 1 - Bedroom



Dimensions: 16'8" x 13'5"
Area: 201 sq. ft
Counted as living area: Yes

Heated: Yes
Finished: Yes
Enclosed: Yes
Contiguous: Yes
Permitted: Yes
Wet space: No
Addition: No
Conversion: No

7 Floor 1 - Exercise Room



Dimensions: 14'9" x 11'11"
Area: 171 sq. ft
Counted as living area: Yes

Heated: Yes
Finished: Yes
Enclosed: Yes
Contiguous: Yes
Permitted: Yes
Wet space: No
Addition: No
Conversion: No

8 Floor 2 - Foyer



Dimensions: 6'8" x 12'3"
Area: 82 sq. ft
Counted as living area: Yes

Heated: Yes
Finished: Yes
Enclosed: Yes
Contiguous: Yes
Permitted: Yes
Wet space: No
Addition: No
Conversion: No



9 Floor 2 - Bedroom



Dimensions: 13'8" x 11'3"
Area: 120 sq. ft
Counted as living area: Yes

Heated: Yes
Finished: Yes
Enclosed: Yes
Contiguous: Yes
Permitted: Yes
Wet space: No
Addition: No
Conversion: No



10 Floor 2 - Kitchen



Dimensions: 9'1" x 13'1"
Area: 119 sq. ft
Counted as living area: Yes

Heated: Yes
Finished: Yes
Enclosed: Yes
Contiguous: Yes
Permitted: Yes
Wet space: No
Addition: No
Conversion: No



11 Floor 2 - Garage



Dimensions: 13'8" x 25'8"
Area: 350 sq. ft
Counted as living area: No

Heated: No
Finished: No
Enclosed: Yes
Contiguous: Yes
Permitted: Yes
Wet space: No
Addition: No
Conversion: No



12 Floor 2 - W.I.C.



Dimensions: 7'1" x 4'9"
Area: 34 sq. ft
Counted as living area: Yes

Heated: Yes
Finished: Yes
Enclosed: Yes
Contiguous: Yes
Permitted: Yes
Wet space: No
Addition: No
Conversion: No



13 Floor 2 - Garage



Dimensions: 24'4" x 23'3"
Area: 567 sq. ft
Counted as living area: No

Heated: No
Finished: No
Enclosed: Yes
Contiguous: Yes
Permitted: Yes
Wet space: No
Addition: No
Conversion: No



14 Floor 2 - Hall



Dimensions: 19'5" x 4'0"
Area: 68 sq. ft
Counted as living area: Yes

Heated: Yes
Finished: Yes
Enclosed: Yes
Contiguous: Yes
Permitted: Yes
Wet space: No
Addition: No
Conversion: No



15 Floor 2 - Bath



Dimensions: 5'0" x 8'1"
Area: 40 sq. ft
Counted as living area: Yes

Heated: Yes
Finished: Yes
Enclosed: Yes
Contiguous: Yes
Permitted: Yes
Wet space: Yes
Addition: No
Conversion: No



16 Floor 2 - Laundry



Dimensions: 8'6" x 13'1"
Area: 111 sq. ft
Counted as living area: Yes

Heated: Yes
Finished: Yes
Enclosed: Yes
Contiguous: Yes
Permitted: Yes
Wet space: No
Addition: No
Conversion: No

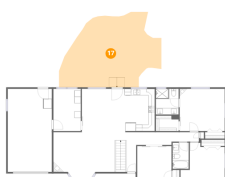


17 Floor 2 - Patio



Dimensions: 31'3" x 23'4"
Area: 559 sq. ft
Counted as living area: No

Heated: No
Finished: No
Enclosed: No
Contiguous: Yes
Permitted: Yes
Wet space: No
Addition: No
Conversion: No



18 Floor 2 - Patio



Dimensions: 4'4" x 4'11"
Area: 22 sq. ft
Counted as living area: No

Heated: No
Finished: No
Enclosed: No
Contiguous: Yes
Permitted: Yes
Wet space: No
Addition: No
Conversion: No



19 Floor 2 - Office



Dimensions: 10'7" x 10'3"
Area: 109 sq. ft
Counted as living area: Yes

Heated: Yes
Finished: Yes
Enclosed: Yes
Contiguous: Yes
Permitted: Yes
Wet space: No
Addition: No
Conversion: No



20 Floor 2 - Living Room



Dimensions: 18'11" x 14'5"
Area: 248 sq. ft
Counted as living area: Yes

Heated: Yes
Finished: Yes
Enclosed: Yes
Contiguous: Yes
Permitted: Yes
Wet space: No
Addition: No
Conversion: No



21 Floor 2 - Bath



Dimensions: 7'1" x 7'11"
Area: 56 sq. ft
Counted as living area: Yes

Heated: Yes
Finished: Yes
Enclosed: Yes
Contiguous: Yes
Permitted: Yes
Wet space: Yes
Addition: No
Conversion: No



22 Floor 2 - Primary Bedroom



Dimensions: 13'11" x 13'1"
Area: 182 sq. ft
Counted as living area: Yes

Heated: Yes
Finished: Yes
Enclosed: Yes
Contiguous: Yes
Permitted: Yes
Wet space: No
Addition: No
Conversion: No



23 Floor 2 - Dining Area

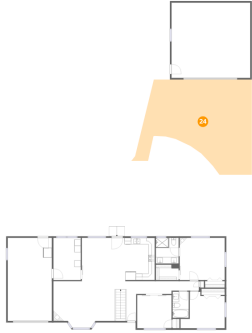


Dimensions: 13'6" x 13'5"
Area: 180 sq. ft
Counted as living area: Yes

Heated: Yes
Finished: Yes
Enclosed: Yes
Contiguous: Yes
Permitted: Yes
Wet space: No
Addition: No
Conversion: No



24 Floor 2 - Patio



Dimensions: 34'7" x 29'6"
Area: 794 sq. ft
Counted as living area: No

Heated: No
Finished: No
Enclosed: No
Contiguous: Yes
Permitted: Yes
Wet space: No
Addition: No
Conversion: No